

## Product datasheet for RR210543

### Tonsl (NM\_001130572) Rat Tagged ORF Clone

#### Product data:

Product Type:	Expression Plasmids
Product Name:	Tonsl (NM_001130572) Rat Tagged ORF Clone
Tag:	Myc-DDK
Symbol:	Tonsl
Synonyms:	Nfkbil2
Vector:	pCMV6-Entry (PS100001)
E. coli Selection:	Kanamycin (25 ug/mL)
Cell Selection:	Neomycin
ORF Nucleotide Sequence:	>RR210543 representing NM_001130572 Red=Cloning site Blue=ORF Green=Tags(s)

TTTTGTAATACGACTCACTATAGGGCGGCCGGAATTCGTCGACTGGATCCGGTACCGAGGAGATCTGCC  
GCCGCGATCGCC

ATGACGCTGGAACAGGAGCTTCGCCAGCTGAGCAAGGCGAAGGCCAGGGCCAGAGGAATGGACAGCTGT  
GCGAGGAGGCGGTCTGCTGCCACCAGCTGGGGAGCTGCTAGCTAGCCACGGTCGCTCCAGGAAGCTTT  
AGAGGAGCACCAGCAGGAGCTACATCTGCTAGAGAGTGTCCAGGACACCCTAGGCTGCGCTGTGGCCAC  
CGCAAGATCGGAGAGCGGCTGGCTGAAATGGAGAACTACTCTGCTGCTCTGAAGCACCAGCATCTTACC  
TGGATCTAGCTGGTTCCTGTCCAACCACACTGAATTGCAGAGAGCCTGGCCACCATTGGCCGCCACCA  
TCTGGATGTATATGACCACTGCCAATCAAGAGATTCTTGTGTCAGGCACAGGCTGCCTTTGAGAAGAGT  
TTGGCTATTGTGGATGAGAACTAGAGGGGATGCTGACCCAGCGGGAAGTGTGAGATGAGGACCCGTC  
TCTACCTCAATCTGGCCCTCACCTGTGAGAGCCTGCAGCAGACAGCCAGTGAACAACACTTCAAAA  
GAGCATCTTTCTCGCTGAGCAGAACCATCTGTATGAAGATCTGTTCCGGGCCGATACAACCTGGGTGCC  
ATCCACTGGCGCGGAGGGCAGCACTCTCAGGCCATGCGCTGCTTGGAGGGGGCCCGGGAATGTGCACGTG  
CCATGAAGATGAGATTTCATGAAAGCGAATGTTGCATGCTAGTGTCTCAGGTGCTCCAAGATCTGGGGGA  
CTTTCTGGCTGCCAAACGAGCCCTGAAGAAGCCCTATAGGTTGGGCTCTCAGAAGCCTAACCAGAGAGTG  
GCTATCTGTGAGAGTCTCAAGTATGTATTGGCCGTGGTCCGGCTGCAGCAGCAGCTGCAAGAGGCTGAGG  
GCAATGATCTTCAAGGTGCCATGGCTATCTGTGAACAGTTGGGGACCTTTCTCCAAGCCGATGACTT  
CCCCAAGGCATCTGAGGCTTACCAGAAGCAGCTGCACTTTGCTGAGCTGCTGAACAGACCCGACCTCGAG  
CTGGCTGTCCATCCACGAATCCCTGGCCACCACGCTGGGAGACATGAAGGATTACCACAAGGCTGTACACC  
ACTATGAAGAGGAACTGAGGCTACGCAAGGCAATGCCCTGGAGGAAGCTAAGACTTGGTTCAACATTGG  
ACTGGCCCGTGAGGAAGCTGGAGATGCATATGAGCTGCTAGCTCCATGCTCCAGAAGGCTTTGCGCTGT  
GCTCAGCAGGCCAGCGTACCAACTGCAGAGGCAGATCTTACAGCATCTTACTGTGCAACTGAAGT  
TGACGCCCAAGAAGCCCGTGACACTGAAATCAGACTGCAGGAGCTGAGTATGGCAAAAGACACAGAGGA  
AGAGGAGGAAGAAGAGGAGGAGGAAGAGGAAGAAGCCAGTGAGGCCCTGGAGACCAGTGAATGGAGCTC  
TCAGAGAGCGAGGATGATGCTGACGGCCTGTCTCAGCAGCTGGAGGAAGAGGAGGAGCTTCAGGGCTGTG



TGGGGCGCGGAAGATAAACAAGTGAACCGCGCAATGACATGGGAGAGACCCTGTTGCACCGAGCTTG  
CATCGAAGGCCAACTGCGCCGTGTCCAGGATCTTGTGAAGCAGGGCCATCCCCTGAATCCCCGAGACTAC  
TGTGGCTGGACTCCTCTACATGAAGCTTGAACATATGGACATCTTGAGATTGTGCGCTTCTTTCTGGACC  
ATGGAGCAGCAGTGGATGACCCGGTGGCCAGGGGTGTGATGGCATCACCCCTGCATGATGCCCTCAA  
CTGTGGCCACTTTGAGGTAGCTGAGCTCCTCATTGAGCGAGGGCGTCCGTAACCTCTCCGACCAGGAAG  
GGCCTCAGCCCCTGGAGACACTGCAGCAGTGGGTGAAGCTGTACTTCAGGGATCTTGACCTTGAGACAA  
GACAGAAGGCCGATCCATGGAGAGGAGCTCCAGATGGCTCCTCAGGCCAAGCTTCCCACAGCTCCCC  
TGCCCTCCAGACCATTCCAAATAATCATCTCTTCGACCCTGAGACCTCTCCTCCCCTAAGCCCTGTCCA  
AAACCCCTCGTATACTCCTAGACCTCCAGAGCCTCTCCAGCCCTGTAAAGTCTTTCTGGAGGAAA  
CTGTGTCTGCAGTGTGCAGACCTCGAAAGAACAGGCACAGGCCAGCCAGCAGCAGTAGCAGCTCGGAGGA  
CGATGACGACAACACAAACCCCTGCAGGCCATCTCAGAAAAGACTGAGACACAGCACACAGCGGTGAA  
GCCAAGACACCTGACCCATCCAAAAGTAGAGAGACAGCCATTTCAAGCGCTTGCCGGGCTGCTTACCAAG  
CAGCCATCCGAGGCGTGGGAGTGCCAGAGCCGTGCTTGGTACCTAGCCTGCCTGGGGCTCAAATGA  
AGTCCCTGCCCCAAAACAGCACTATTCTGAGGAGGAATTCCTGGCTGAGGAATGGCTGGAGGTAGAT  
ACACCTTGACCCGAGCAGCAGCAGCAGCAGCAGGCCAGTACCTCCATATCAGACTATGAGCGATGCCCTG  
CAAGGCCCCGGACTCGTGCCAAGCAGAGTCGCCAGCAAGTCTTGATGGTTGGTGTACACGGACTAAAGC  
AGCAGATGCCAGCTTGACTGCAGAGCCTACGGAGAATCCAGCATGCCAAGGACCACAGGCCAACAAA  
GAAAATTGTGCAGCAGGCCAGCCTTTGCTTCTGGTCCAGCCCTCCTATCCGGGTTGAGTTCAAATTC  
AGGACAACCTTTTCTCATCCCCGTCCACACAGCGATGTCCATTCTGTGGCTTGCTAGCAGAGCAAGC  
GGCCACAGCGCTACTTCCAACTTGCGGGTACTCCCAAGGCTCACCTACGGAAGGATGGAGCACTAGT  
GCCCCACAGGACCCATCCCTGATGTGTGCAAGTAACGACGAGGTGATGGCTGAAGTAACGTCATGGG  
ACCTTCTCCACTAAAGGACCGTACCGTAGGGCTGCCAGAGCCTGGGCAAGGGGAGCACCAGCAAGT  
GCTGCAGGCCATGGAGCACCAGAGTTCGAGCCCTCGTTTAGTGCCTGTCTCTGGCCTTGTGCCAAGCC  
CAGCTCACACCCCTGCTGAGGGCCCTCAAGTTACACACAGCACTCCGGGAGCTACGCCTTTCTGGGAACC  
GACTGGGTGACCCATGTGCTACTGAGCTACTGGCTACCCTGGGACCATGCCAACCCTGGTCTCCTCGA  
TCTCTTCCAATCACTTGGGCCGGAAGGCTGCGTCAGCTTGTGAAGGCTCCTTGGGCCAGACTGCT  
TTCCAGAACGTGGAGGAAGTACTTGGATGATGAATCCACTGGGAGATGGCTGTGCTCAGGCCCTGGCCT  
CCCTTCTGCGGACCTGCCCCGTGCTCAGGACCTTGGCTTACAAGCCTGTGGTTTCAGCCCCAGCTTCTT  
CCTGAGCCACCAGGCTGCCCTGGGTAGTGCCTTCAAAGATGCTGAGCACCTCAAGACCTTGTCCCTATCT  
TACAATACTCTCGGCGCTCCTGCCCTGGCAAGGGTGTGCAGAGCTTACCCACCTGTACCCTCCTACATT  
TGGAGCTTAGCTCCGTGGCAGCCAGCAAGGAACTCGAGTCTCATAGAGCCTGTTATCAAATACTTGAC  
CAAGGAAGGCTGTGCTCTGGCCACCTAACCTGTCTGCAAACTGCCTGAGTGACAAGGCTGTGAGAGAA  
CTGAGCAGATGTCTCCCTAGCTGCCCTCACTCACCTCTCTGGACCTGTCCGCCAACCTGAGGTAGCT  
GTGCCGTCTGGAGGAGCTCCTGTCTGCCCTACAGGAGCGGCCCAAGGCCTCAGCTTCTTTGACTTGTG  
AGGCTGTCCATTAGGGGCCCTGAACTCTGACCTCTGGGACAAGATCCTCTCGCAGTTGCAGGAGCTG  
CAGTTGTGCAGCAAAGACCTGACCACAAAAGACCAGACACCCTGTGTGACAGACTGCCGGCGGGTGCCT  
GCACACTGAACCAAGGTTCAAGCTTCTTTAAATGCCTC

ACGCGTACGCGGCCGCTCGAGCAGAACTCATCTCAGAAGAGGATCTGGCAGCAAATGATATCCTGGATT  
ACAAGGATGACGACGATAAGGTTTAA

Protein Sequence: >RR210543 representing NM\_001130572  
 Red=Cloning site Green=Tags(s)

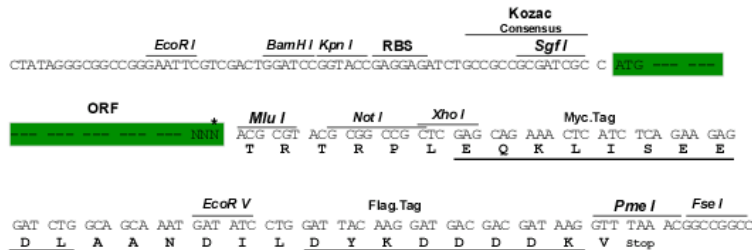
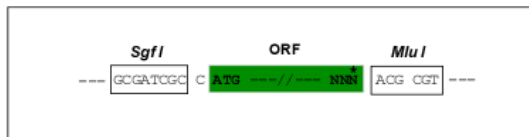
MTLEQELRQLSKAKARAQRNGQLCEEAVCCHQLGELLASHGRFQEAL EEHQELHLLSVQDTLGCAVAH  
 RKIGERLAEMENYSAALKHQHL YLDLAGSL SNHTEL QRAWAT IGRTHLDVYDHCQSRDSSLQAQAAFEKS  
 LAIVDEKLEGMLTQREL SEMRTRL YLNLGLT CЭСLQQT AQCNFYKKSIFLAEQNHLYEDLFRARYNLGA  
 IHWRGGQHSQAMRCL EGARECARAMKRFMESECCMLVSQVLDLGDFLAAKRALKKAYRLGSKPNQRV  
 AICQSLKYVLAVVRLQQQLQEAEGNLQGAMAICEQLGDLFSKADDFPKASEAYQQLHFAELLNRPDLE  
 LAVIHESLATTLDGMKDYHKAVHHYEEELRLRKGNALEEAKTWFNIGLAREEAGDAYELLAPCFQKAFGC  
 AQAQRYQLQRQILQHL YTVQLKLPQEARDTEIRLQEL SMAKDTEEEEEEEEEEEASEALETSEMEL  
 SESEDDADGLSQLEEEELQGCVGRRKINKWNRNDMGETLLHRACIEGQLRRVQDLVKQGHPLNRPDY  
 CGWTPLEACNYGHLEIVRFLLDHGAAVDDPGGQCGDGI TPLHDALNCGHFEVAELLIERGASVTLRTRK  
 GLSPLETLQQWVKLYFRDL DLETRQKAASMERRLQMASSGQASHSPALQTI PNNHL FDPETSPSPSPCP  
 KPPSYTPRPEASPAPAKVFL EETVSAVCRPRKNRHRP ASSSSSEDDDDNTNPCRPSQKRLRHSTQOGE  
 AKTPDPSKSRETAISSACRAAYQAAIRGVGSAQSRRLVPSLPRGSNEVPAPKTALIP EEEFLAEEWLEVD  
 TPLTRSSSSSRPSTISIDYERCPARPRTRAKQSRPASLDGWCTRKAADASLTAEPTENSMPRTTGPNK  
 ENCAAGQPLLLVQPPPIRVVQIQDNLFLIPVPHSDVHSVAVLAEQAAQRYFQTCGLLPRLTLRKGALL  
 APQDPIPDVLSNDEVMAEVT SWDLPLPKDRYRRACQSLGQGEHQVQLQAMEHQSSSPFSACSLALCQA  
 QLTPLLRALKLHTALRELRLSGNRLGDPCATELLATLGTMPNLVLLDLSNHLGPEGLRQLVEGSLGQTA  
 FQNV EELDL SMNPLGDGCAQALASLLRTPVLR LRLQACGFSPSFFLSHQAAALGSAFKDAEHLKTL SLS  
 YNTLGPALARVLSLPTCTLLHLELSSVAASKSNSSLIEPVIKYL TKEGCALHLTL SANCLSDKAVRE  
 LSRCLPSCPSTSLDL SANPEVSCAGLEELL SALQERPQGLSFFDL SGCSIQGPLNSDLWDKILSQLQEL  
 QLCSKDLTTKDRDTLCQRLPAGACTLNQGSKLFKCL

TRTRPLEQKLISEEDLAANDILDYKDDDDKV

Restriction Sites:  
 Cloning Scheme:

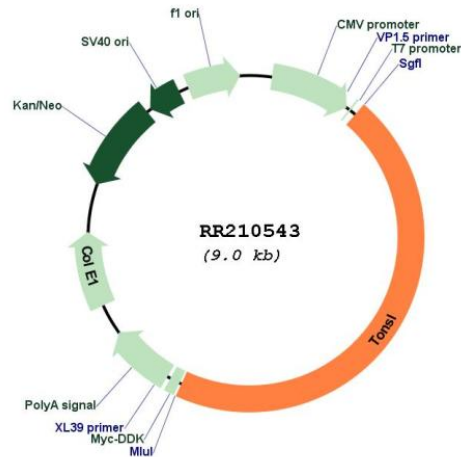
SgfI-MluI

Cloning sites used for ORF Shuttling:



\* The last codon before the Stop codon of the ORF

## Plasmid Map:



ACCN: NM\_001130572

ORF Size: 4101 bp

**OTI Disclaimer:** The molecular sequence of this clone aligns with the gene accession number as a point of reference only. However, individual transcript sequences of the same gene can differ through naturally occurring variations (e.g. polymorphisms), each with its own valid existence. This clone is substantially in agreement with the reference, but a complete review of all prevailing variants is recommended prior to use. [More info](#)

**OTI Annotation:** This clone was engineered to express the complete ORF with an expression tag. Expression varies depending on the nature of the gene.

**Components:** The ORF clone is ion-exchange column purified and shipped in a 2D barcoded Matrix tube containing 10ug of transfection-ready, dried plasmid DNA (reconstitute with 100 ul of water).

**Reconstitution Method:**

1. Centrifuge at 5,000xg for 5min.
2. Carefully open the tube and add 100ul of sterile water to dissolve the DNA.
3. Close the tube and incubate for 10 minutes at room temperature.
4. Briefly vortex the tube and then do a quick spin (less than 5000xg) to concentrate the liquid at the bottom.
5. Store the suspended plasmid at -20°C. The DNA is stable for at least one year from date of shipping when stored at -20°C.

RefSeq: [NM\\_001130572.1](#), [NP\\_001124044.1](#)

RefSeq Size: 4246 bp

RefSeq ORF: 4104 bp

Locus ID: 366953

UniProt ID: [D4A615](#)

Cytogenetics: 7q34

**MW:** 151.8 kDa

**Gene Summary:** Component of the MMS22L-TONSL complex, a complex that stimulates the recombination-dependent repair of stalled or collapsed replication forks. The MMS22L-TONSL complex is required to maintain genome integrity during DNA replication by promoting homologous recombination-mediated repair of replication fork-associated double-strand breaks. It may act by mediating the assembly of RAD51 filaments on ssDNA. Within the complex, may act as a scaffold (By similarity).[UniProtKB/Swiss-Prot Function]