

Product datasheet for **RR210536**

Dot1l (NM_001108733) Rat Tagged ORF Clone

Product data:

Product Type: Expression Plasmids
Product Name: Dot1l (NM_001108733) Rat Tagged ORF Clone
Tag: Myc-DDK
Symbol: Dot1l
Vector: pCMV6-Entry (PS100001)
E. coli Selection: Kanamycin (25 ug/mL)
Cell Selection: Neomycin
ORF Nucleotide Sequence: >RR210536 representing NM_001108733
Red=Cloning site Blue=ORF Green=Tags(s)

TTTTGTAATACGACTCACTATAGGGCGGCCGGAATTCGTCGACTGGATCCGGTACCGAGGAGATCTGCC
GCC**CGATCGCC**

ATGGGCGAGAAGCTGGAGCTGAGGCTCAAGTCGCCTGTGGGCGGGAGCCCGCGTCTACCCGTGGCCG
TGCCGGTCTACGTGAGTGTACTTGGGAGAACCCGGGGACAAGCACCATGATGCTGCTCATGAGATTAT
CGAGACTATCCGATGGGTCTGCGAGGAAATCCCAGATCTCAAGCTGGCCATGGAGAATAATGCTCCTGATC
GACTACGACACCAAAAGTTTTGAAAGCATGCAGAGGCTGTGTGACAAATAAACCAGGCAATTGACAGCA
TCCACCAGCTGTGGAAGGCACTACACAGCCCATGAAGCTCAATACTCGCCCGTCAATGGGCTCCTGCG
GCACATCCTGCAGCAGGTGTACAACCCTCTGTGACCGACCCAGAGAAGCTCAACAACACGAGCCCTTC
TCCCCGAGGTGTACGGGAGACCTCCTTTGACCTGGTGGCCAGATGATCGATGAGATCAAGATGACCG
AGGATGACCTGTTGTAGACCTGGGAGTGGTGTGGGCGAGTTGTCTCAGGTTGCGGCGCCACCAA
CTGCAAACATCACTACGGAGTGGAGAAAGCGGACATCCCAGCCAAGTACGCGGAGACCATGGATCGAGAG
TTCAGGAAGTGGATGAAATGGTATGAAAAAAGCATGCAGAATACACACTGGAGCGAGGTGACTTCTCT
CAGAGGAGTGGAGGGAACGGATCGCCAACACGAGTGTATATTTGTGAATAACTTTGCCTTTGGTCTGA
GGTGGATCACCAGCTGAAGGAACGATTCGCAAACATGAAGGAAGGCGGCAAGTATCGTATCCCTCAAAGCCC
TTTGCCCCCTGAACTTCAGGATCAACAGCAGGAAGTGTAGTGACATTGGCACCATCATGCGTGTGGTGG
AGCTGTGCCCCCTGAAGGGCTCTGTGTCATGGACTGGCAAGCCTGTCTCCTACTACCTGCACACCATTGA
CCGCACCACTATTGAAAACATTTTTCTAGTCTGAAAAATCCAAAACCTCAGGGAGGAGCAGGAGGCAGCT
AGGCGCAGGCAGCAGCGAGAGAACAAGAGCAACGCGACCAACCCACCAAAGTCCCTGAGAGCAAGGCAG
CTGCCACCGAGGCCCTCGGATTTCTGGTGTGAGGAAGAAAAATCAGGTGTGGCCACCGTCAAAAAGCA
ATCTCCCTCCAAAGCCCCGAAGAAGAACTGAACAAGAAAGGGAGAAAAATGGCTGGCCGGAAGCGTGGG
CGACCCAAGAAAAATGAGTGTCTGCCAGTCCGAGTCGCAAGTCCAAGAAGAGCCAAAGCACACTGGATCTCC
TGCACTCTCCGCCCCAGCCCCACCCTCAGCCTCACCCAGGATGCATACAGGGCCCCCACAGCCCGTT
CTACCAGTACCTCCGAGCACGCGCTGCACTCGCCCCAGCCACTGCTAGTGGCTCCCACCCACCCGCG
CTGCAGAAGCTGTAGAGTCTTCAAGATCCAGTACCTGCAGTTCCTGGCCTACACGAAGACCCCGCAGT
ACAAGGCCAACCTGCAGCAGTCTTGACCAGGAGAAGGAGAAGAACAACAACACTGCTGGGTACAGCCCA
GCAGCTCTCAGCCATTGCCAGGCACAAAAGGAAGAGATCCGCGAGGCTGTTCCAGCAGAAGCTGGATGAG



[View online »](#)

TTGGGCGTGAAGGCACTGACCTACAATGACCTGATTTCAGGCCAGAAAGAAATCTCTGCCACAACCAGC
AGCTGCGGGAGCAGTTCGGAACAGCTGGAGAAGGACAACAGCGAGCTTCGGAGCCAGAGCCTGCGGCTGCT
CAGGGCCCGGTGCGAAGAGCTGAGGCTTACTGGTCCACCTTGTCCCTGGAGAACCTGCGGAAAGAGAAG
CAGGCCCTGCGGAGCCAGATCTCAGAGAAGCAGCGGCACTGCCTAGAGCTGCAGATCAGCATCGTGGAGC
TGGAGAAGACCCAGCGCCAGCAGGAGCTCCTGCAGTTGAAGTCTGTGTGCCACCAGATGACGCTCTGTC
CCTGCACCTGCGTGGCAAGGGTGCCTGGGCCGCGAGCTGGAGTCTGACGCTGGCGCTTGCCTTGGAG
CTGGAGTGTCCAAGCTCTCCCTCCACACCTCAGCAGCATGAGCCCTGAGCTGTCCATGAATGGCCATG
CCGCCAGCTATGAGCTCTGCGGTGCAGCTAGTCGGCCCTCGTCCAAGCAGAACACCCCCAGTATCTGGC
CTCCCCCTTGACCAGGAGGTCGTGCCCTGCACCCCTAGCCACAGTGGCCGGCCTCGGCTGGAGAAGCTG
TCTGGCCTGGCTTTCCTGACTACACCCGGTTGTACCCGGCCAAGATTGTGTTGAGGCGGCACCTGAGCC
AGGACCACACCGGGGCCAGCAAAGCAGCTACTAGTGAGCCACACCCTCGGCCAGAGCATGCCAAGGAGAA
CAGCCTTCCCTACCAGAGCCCTGGCTTGTGAACAGCATGAAGCTCAGCCCCAGGATCCACCGTGGCC
TCCCCGGCAACCTCACCCCTCACTTCGAGAGGGGTAGTGAGAAGGGTGTAAAGGAGCGTGCCTACAGCA
GCCATGGGAGACCATCACAGCCTGCCTGTGAGCATTCCACTCAGCACAGTACAGCCCAACAAGCTGCC
TGTGAGCATCCCCTAGCCAGCGTGGTGTGCCAGCCGTGCCGAGAGGGCGAGGAGCAGCTCCAGCCCT
GTGCCCAAGCCTCGAGACTCCTCATCCACACTGAGAAGCAGATTGGTGTCTCCACCCATGGTGCAGGGG
GTGCTGCGGCAGGAAGCAGGAGCCTCACTGTGGCGCCACAGGTTTCTATGCTGGTTCGGTGGCCATCAG
TGGGGCTCTGGCCAGCAGCCAGCACCTCTGGCCTCTGGAATGGAATCTGCTGTTTTGAGGAGTCTCT
GGCCCCAGCAGCCTTTTGGCACCATGGGGTCTCGCAGCACACCGCCACAACATCCACCTCTCTGCCGC
AGTCTCGCAACTCGGGCCTGCCTCTCTGCCACCAGCTCGCAGCCAGTCCCGCCTGAGTGTGACCAC
CCAGGGCTCACTGCCAGACACCGCAAAGGGGAGCTGCCTGTGATCCTGCCTTCTCAGACCCAGAGAGT
GAAGCTAAGAGGAGGATTGTGTTTCAGCATTTCAGCTGGTCCAGCTCCAGGCAGTGCCTTCCACCAGGC
ACAGCCCCTTGCCTCTGGCACCCTGGGGATTGTGTTTCAGAGCCATGGGCAGGACAGTGAAGCGTAG
CAGAAGGAAGCGTGCATCAGCTGGAACGCCTAGCCTCACACGGGTGTGTCCCCAAGCGCCGAGCTCTG
CCAACCGTCGCTGGCCTTTTACACAGTCTTCGGGGTGCCTCTCAATCTCACCTCCATGGTGCAGCAACA
TCAACCAGCCCCTGGAGATCACAGCCATCTCATCCCCGGAGAGCTCACTGAAGAGCTCCCCACACCCTA
CCAGGACCATGACCAGCCTCCAGTGTCTCAGGAAGGAGCGGCCCTGGGCCCAACTAATGGGGCCACTAC
TCTCCGCTGACGTGAGTGGAGCCAGGCTCGGAGGACGAGCCAGCAGTGCCTGAAATGAGAGAAAAA
TTGCAACAATCTTTAGAAAGCAAATCTCCCCGAAGACTGGAAAATGGTGGTGGCTTGTGGGAAAG
GAAGCCGGTCCCCTCAGGCGAGCCTGTCAACAGCAGCAAATGGAAGTCCACCTTCTCACCATCTCCGAC
CTCGGCTTGGCCAAGCCATGGACAGTCCGCTACAGGCCAGCTCTGCACTGAGCCACAGCCCCTCTTCT
CTTCCCGCCCTCTGGAGGAGCCTGTGCTGAGGCCAAGCCCTCCACCCACCCAAAGGAAAAGTTTGC
GGGCTCTCTGGCTGCAGCTGAGGGGCAAGCCCTGGCACCAACCCTCCCAACAGCCTGGCCTTCACTGGG
GGCCTTGTGTCAGACCTCGGTTTACATAGCTTCAATGACGGTGTCTCCCTCTCCACAAGGGCCCGGAGG
TGGCGGGCCTGAGCGCCTCCCTGAGCTTCCATCCCAGAGGGGCAAGGACAGTACCACAGAGGCCAACCC
CTTCTCAGCAGGCGGCAGCCGGAGGGCCTGGGTGGCCTGAAGGGTGAAGGCAATGCAAGCAAGGAGTCA
GGAGAGAGCCTGCCCCTGTGTGGCCCTCAGACAAGGTCTCACTGCCACACGGCAGCAGGGCCAGCAAAG
GCCGTGACCGGAGCTGGACTTCAAGGGCGGCCACAACCTTTCATCTCTGCTGCAGCCGTGCCTCCAGG
TGGCCTCCTTGGTGGCCCTGGTCTTGAAGTGTGGCTTCTCTGCGGGCAGTGCACACCCCTCTGCCAG
GCTCCCCGGCCTTCTGAGCACCTTGGCCCTGGGCCCAAGTTACTCTGGGCCCATGTCCCTGCAGG
CCAACCTGGGCTCTGTGGCCGGCTCTCTGTGCTGCAGTCTTGTTCAGCACTGTGCCAGCTGCTGCAGG
CCTGGTGCATGTGTATCCACTGCGACCCGACTGACCAACTCACACCATGGGCAGCTTCTCTCTGGG
GTGGCCGGCGGAACCGTTGGAGGTAAT

ACGCGTACGCGGGCCGCTCGAGCAGAACTCATCTCAGAAGAGGATCTGGCAGCAAATGATATCCTGGATT
ACAAGGATGACGACGATAAGGTTTAA

Protein Sequence: >RR210536 representing NM_001108733
 Red=Cloning site Green=Tags(s)

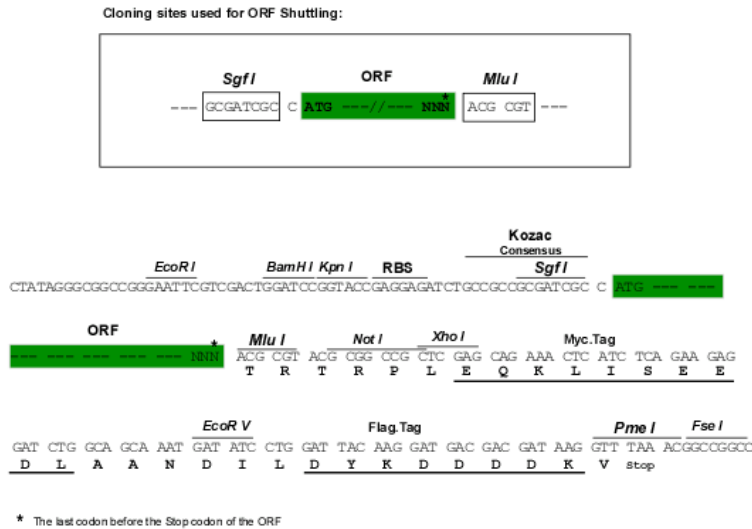
MGEKLELRLLKSPVGAEPVYPWPLPVYVSVLAENPGDKHHDAHEI IETIRWCEEIPDLKLAMENYVLI
 DYDTKSFESMQRLCDKYNRAIDSIHQLWKGTTQPMKLNTRPSNGLLRHILQQVYNHSVTDPEKLNYYEPF
 SPEVYGETSFDLVAQMIDEIKMTEDDLFDVLGSGVGQVVLQVAAATNCKHHYGVKADIPAKYAE TMDRE
 FRKWMKWYGKKHAEYTLERGDFLSEWRERIAN TSVIFVNNFAFGPEVDHQLKERFANMKEGGRI VSSKP
 FAPLNFRINSRNLSDIGTIMRVVELSPLKGSVSWTGKPVSYLHTIDRTILENYFSSLKNPKLREEQEAA
 RRRQQRENKSNATPTPKVPESKAAATEAPADSGAEEEEKSGVATVKKQSPSKARKKKLNKKGRKMAGRKRK
 RPKKMSAASADRKSKKSQSTLDLLHSPPPAPPSASPQDAYRAPHSPFYQLPPSTPLHSPDPLL VAPTPPA
 LQKLLSEFKIQYLQFLAYTKTPQYKANLQQLLDQEKEKNTQLLGTAAQLF SHCQAQKEEIRRL FQKLDL
 LGVKALTYNDLIQAQKEISAHNQQLREQSEQLKDNSELRSQSLRLLRARCEELRLDWSTLSLENL RKEK
 QALRSQISEKQRHCLLQISIVELEKTQRQELLQLKSCVPPDDALSLHLRGKALGRELESDAGRLRLE
 LDCAKLSLPHLSSMSPEL SMNGHAASYELCGAASRPSSKQNTPQYLASPLDQEVVPTPSHSGRPRLEKL
 SGLALPDYTRLSPAKIVLRRHLSQDHTGASKAATSEPHRPEHAKENSLPYQSPGLSNSMKLSPQDPLA
 SPATSPLT SERGSEKVKERAYSSHGETITSLPVSIP LSTVQPNKLPVSIPLASVVLPSRAERARSTPSP
 VPQPRDSSSTLEKQIGASTHGAGAAAGSRSLTVAPTGFYAGSVAISGALASSAPLASGME SAVFEES
 GPSSLFGTMGSRSTPPQHPPLLQSRNSGPASPAHQLAASPRLSVTTQGSPLDPTGKGELPADPAFSDPES
 EAKRRIVFISISAGASSRQSPSTRHSPLTSGTRGDCVQSHGQDSRKR SRKRASAGT PSLTTGVSPKRRAL
 PTVAGLFTQSSG SPLNLSMVSINQPLEITA ISSPESSLKSSPTPYQDHDQPPVLRKERPLGPTNGAHY
 SPLTSDEEPGSEDEPSSARIERKIATISLESKSPKLTLENGGGLVGRKPVPSGEPVNSSKWKSTFSPI SD
 LGLAKAMDSPLQASSALSHSPLFSFRPSLEEPAAEAKPSTHPRKSFAGSLAAAEGPSPGTNPPNSLAFSG
 GLAADLGLHSFNDGASL SHKGPVAVGLSASL SFPSQRKDDSTEANPFLSRRQPELGGKGE GNASKES
 GESLPLCGPSDKVSLPHGSRASKGRDRELD FKGGHNLFISAAA VPPGGLLGGPGLYTVVASSAGSATPSAQ
 APRPFLSTFAPGPQFTLGPMSLQANLGSVAGSSVLQSLFSTVPA AAGLVHVSSTATRLTNSHTMGFS SSG
 VAGGTVGGN

TRTRPLEQKLISEEDLAANDILDYKDDDDKV

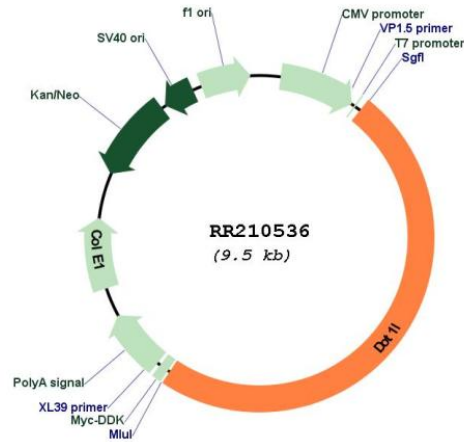
Restriction Sites:

Sgfl-MluI

Cloning Scheme:



Plasmid Map:



ACCN: NM_001108733

ORF Size: 4647 bp

OTI Disclaimer: The molecular sequence of this clone aligns with the gene accession number as a point of reference only. However, individual transcript sequences of the same gene can differ through naturally occurring variations (e.g. polymorphisms), each with its own valid existence. This clone is substantially in agreement with the reference, but a complete review of all prevailing variants is recommended prior to use. [More info](#)

OTI Annotation: This clone was engineered to express the complete ORF with an expression tag. Expression varies depending on the nature of the gene.

Components: The ORF clone is ion-exchange column purified and shipped in a 2D barcoded Matrix tube containing 10ug of transfection-ready, dried plasmid DNA (reconstitute with 100 ul of water).

Reconstitution Method:

1. Centrifuge at 5,000xg for 5min.
2. Carefully open the tube and add 100ul of sterile water to dissolve the DNA.
3. Close the tube and incubate for 10 minutes at room temperature.
4. Briefly vortex the tube and then do a quick spin (less than 5000xg) to concentrate the liquid at the bottom.
5. Store the suspended plasmid at -20°C. The DNA is stable for at least one year from date of shipping when stored at -20°C.

RefSeq: [NM_001108733.1](#), [NP_001102203.1](#)

RefSeq Size: 6015 bp

RefSeq ORF: 4650 bp

Locus ID: 362831

Cytogenetics: 7q11

MW: 166.8 kDa