

## Product datasheet for RR210509

### Prnp (NM\_012631) Rat Tagged ORF Clone

#### Product data:

Product Type:	Expression Plasmids
Product Name:	Prnp (NM_012631) Rat Tagged ORF Clone
Tag:	Myc-DDK
Symbol:	Prnp
Synonyms:	Prn; PrP
Mammalian Cell Selection:	Neomycin
Vector:	pCMV6-Entry (PS100001)
E. coli Selection:	Kanamycin (25 ug/mL)
ORF Nucleotide Sequence:	>RR210509 representing NM_012631 Red=Cloning site Blue=ORF Green=Tags(s)

TTTTGTAATACGACTCACTATAGGGCGCCGGAATTCGTCGACTGGATCCGGTACCGAGGAGATCTGCC  
GCC**CGATCGCC**

ATGGCGAACCTTGGCTACTGGCTGCTGGCCCTTTTGACTACATGTACTGATGTTGGCCTCTGCAAAA  
AGCGGCCAAAGCCTGGAGGGTGGAACTGGTGAAGCCGGTACCCTGGGCAGGGAAGCCCTGGAGGCAA  
CCGTTACCCACCTCAGAGTGGTGGTACCTGGGGCAGCCCATGGTGGTGGCTGGGGACAACCTCATGGT  
GGTGGCTGGGGACAACCTCATGGTGGTGGCTGGGGTCAAGCCCAACCTCAAGCATGTGGCAGGGGCTGCCGC  
GTACCCATAATCAGTGAACAAGCCAGCAAGCCAAAAACCAACCTCAAGCATGTGGCAGGGGCTGCCGC  
AGCTGGGGCAGTGTGGGGGCCCTTGGTGGCTACATGTTGGGGAGTGCCATGAGCAGGCCATGCTCCAT  
TTTGGCAACGACTGGGAGGACCGCTACTACCGAGAAAACATGTACCGTTACCCTAACCAAGTGTACTACA  
GGCCGGTGGATCAGTACAGCAACCAGAACAACCTTCGTGCACGACTGTGTCAATATCACCATCAAGCAGCA  
TACAGTACCACCACCACCAAGGGGAGAACTTCACGGAGACCGAGTGAAGATGATGGAGCGTGTGGT  
GAGCAGATGTGCGTCACCCAGTATCAGAAGGAGTCCCAGGCCATTACGACGGGAGAAAGATCTAGCCCGC  
TGCTTTCTCCTCCCTCCTGTGATCCTCCTCATCTCCTCCTCATCTTCTGATCGTGGA

**ACGCGT**ACGCGGCCGCTCGAGCAGAACTCATCTCAGAAGAGGATCTGGCAGCAAATGATATCCTGGATT  
ACAAGGATGACGACGATAAGGTTTAA



[View online »](#)

**Protein Sequence:** >RR210509 representing NM\_012631  
 Red=Cloning site Green=Tags(s)

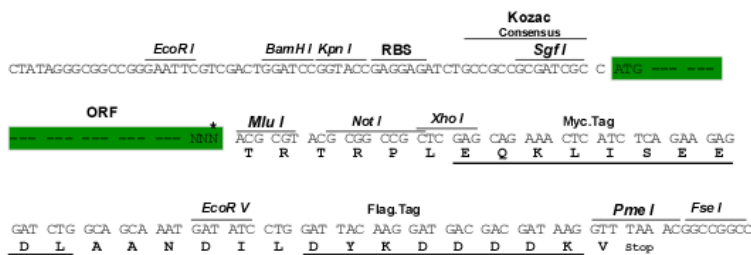
MANLGYWLLALFVTTCTDVGLCKKRPKPGGWNTGGSRYPGQSPGGNRYPPQSGGTWGP HGGGWGQPHG  
 GGWGQPHGGGWGQPHGGWSQGGGTHNQWNKPSKPKTNLKHVAGAAAAGAVVGG LGGYMLGSAMSRPMLH  
 FGNDWEDRYYREMYRYPNQVYYRPVDQYSNQNFVHDCVNITIKQHTVTTTTKGENFTE TDVKMMERVV  
 EQMCVTYQKESQAYYDGRSSAVLFSPPVILLISFLIFLIVG

TRTRPLEQKLISEEDLAANDILDYKDDDDKV

**Restriction Sites:** Sgfl-MluI

**Cloning Scheme:**

Cloning sites used for ORF Shuttling:



\* The last codon before the Stop codon of the ORF

**ACCN:** NM\_012631

**ORF Size:** 762 bp

**OTI Disclaimer:** The molecular sequence of this clone aligns with the gene accession number as a point of reference only. However, individual transcript sequences of the same gene can differ through naturally occurring variations (e.g. polymorphisms), each with its own valid existence. This clone is substantially in agreement with the reference, but a complete review of all prevailing variants is recommended prior to use. [More info](#)

**OTI Annotation:** This clone was engineered to express the complete ORF with an expression tag. Expression varies depending on the nature of the gene.

**Components:** The ORF clone is ion-exchange column purified and shipped in a 2D barcoded Matrix tube containing 10ug of transfection-ready, dried plasmid DNA (reconstitute with 100 ul of water).

**Reconstitution Method:**

1. Centrifuge at 5,000xg for 5min.
2. Carefully open the tube and add 100ul of sterile water to dissolve the DNA.
3. Close the tube and incubate for 10 minutes at room temperature.
4. Briefly vortex the tube and then do a quick spin (less than 5000xg) to concentrate the liquid at the bottom.
5. Store the suspended plasmid at -20°C. The DNA is stable for at least one year from date of shipping when stored at -20°C.

**RefSeq:** [NM\\_012631.2](#), [NP\\_036763.1](#)

**RefSeq Size:** 2142 bp

**RefSeq ORF:** 765 bp

**Locus ID:** 24686

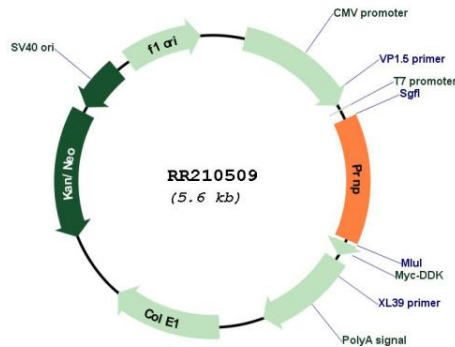
**UniProt ID:** [P13852](#)

**Cytogenetics:** 3q36

**MW:** 27.8 kDa

**Gene Summary:** conformational conversion of gene product prion protein (PrP) associated with Prion diseases, fatal neurodegenerative disorders in man and animal [RGD, Feb 2006]

**Product images:**



Circular map for RR210509