

Product datasheet for **RR210349**

Gpr162 (NM_001108646) Rat Tagged ORF Clone

Product data:

Product Type:	Expression Plasmids
Product Name:	Gpr162 (NM_001108646) Rat Tagged ORF Clone
Tag:	Myc-DDK
Symbol:	Gpr162
Synonyms:	Grca
Mammalian Cell Selection:	Neomycin
Vector:	pCMV6-Entry (PS100001)
E. coli Selection:	Kanamycin (25 ug/mL)



[View online »](#)

ORF Nucleotide Sequence:

>RR210349 representing NM_001108646
 Red=Cloning site Blue=ORF Green=Tags(s)

TTTTGTAATACGACTCACTATAGGGCGGCCGGGAATTCGTCGACTGGATCCGGTACCGAGGAGATCTGCC
 GCC**CGGATCGCC**

ATGGCTCGGGGTGGGTTGGGGCAGAAGAGGCCTCCCTACGCTCAAACGCATTGTCTGGCTGGCCTGCG
 GGCTGCTGGCCCTGCTGGCCAACGCCTGGATCATCCTCAGCATCTCGGCCAAACAGCAGAAGCACAGCC
 ACTGGAGCTGCTGCTCTGCTTCTGCGGGCACACATATACTCATGGCCGCTGTGCCCTTACCACCTTC
 GCTGTGGTACAGCTCCGGCGCCAGGCTCCTCTGACTATGACTGGAACGAGAGCATCTGCAAGGTCTTTG
 TGTCCACCTACTACAGCTGGCCCTGGCCACCTGCTTACGGTGCCTCGCTCTCCTACCACCGCATGTG
 GATGGTGCCTGGCCGTTAACTACGCCTCAGCAACGCCAAGAAGCAGGCACTGCACGCCGTATGGGC
 ATCTGGATGGTCACTTTATCCTGTCCAGCTGCCCTCCATCGGTGGCACAACAACGGGGAGCGCTACT
 ACGCCCGAGGCTGCCAGTTCATAGTCTCAAGATTGGCCTGGGCTTTGGTGTCTGCTTACGCTCTTGT
 CCTTGGGGCATTGTCTGGGGTTGGTCTGTGTGGCCATCACGTTCTATCAGACACTGTGGGCCCGGCC
 CGGAGGGCTCGCAAGCCCGGAGAGCGGGGGCAGCGTGGGAGCCAAGGCAGGTGGGCTGGGGGGCTTGG
 GTACCCGGCCAGCTTTTGGAGTGCAGCCATCGTGGTGGAGGACACCCGAGGGAAGCGGGCTCCTCGCT
 GGATGGCTCTGAATCTGCCAAGACATCCTTGCAGGTACCAACTTGGTACGCGCCATCGTCTTCTCTAT
 GACTCGCTCACGGGGTGCCTTCTGGTGGTGGAGCTTCTTCTCCTTGAAGTCACTCAGCCCCGCCAT
 GGATGGTCTGGCTGTGCTGTGGTGTCCATGGCAGACAGTGTCTCCTGCCCTCCTTCTATCTGGTCTG
 TGAGCGCTACCGTGCAGATGTGCGCACAGTGTGGGAGCAGTGTGTGGCCATCATGTCCGAGGATGACGGT
 GATGACGATGGCGCTGTGATGACTACACAGACGGCCCGTGTGCAAAATTCGCTTTGCTAATGGAG
 CCACAGGGTCAGGGAGTCGGGACCCACCCAGGTGAAACTGCTGCCGGTTCGGCACATGCTTCCACCC
 CCTTGAGAGAGTACACTATTTACAGGTTCTTTGTCCCGCGGTTATCCCATGATGAGACCAACGCTTTT
 TCTACTCCTCGGGCACCAGGCTCCTTCTGCAAGTGGTTCATCGTCTGATGATATCCGGATCCTCCAG
 CCCAGAGCAGAGCCCTTGGAGGCTCCTCCAGAATACCCGGGACAGAGACTCAGGATAGAGGATGAGGAGGA
 CGAGGAAGAGGCTGAAGGTGGGGCTTAGCCAGCCTTCGACAGTTTCTAGAAAAGTGGGGTCTGGGGTCA
 GGTGGGGGACCCACAGGCTCCTGGTTTTTCCGGGAGGAGATCACCACCTTCTCATGATGAGACACCTC
 TGCCTTCTCAACTGCATCACCAGGACCTCCTCGTAGGCCTAGGCCGCTGGGCTTTTACCTCGACG
 ACTCTCCCTTGGGTCTCCTGAGAGCCGAGCTGTTGGACTTCTTTGGGGTAAAGTGCAGGAAGACGCTGT
 TCCCTTACAGGGAGTGAAGGGAGTCAAGGGCTTGGGGAAGACCTTGGGGCCAGGCAACCCCATCTTCC
 CCCAGTTGACCTGCCAGTTGACCTG

ACGCGTACGCGGGCCGCTCGAGCAGAAACTCATCTCAGAAGAGGATCTGGCAGCAAATGATATCCTGGATT
 ACAAGGATGACGACGATAAGGTTTAA

Protein Sequence:

>RR210349 representing NM_001108646
 Red=Cloning site Green=Tags(s)

MARGGLGAEASLRNALSWLACGLLALLANAWIILSISAKQKHKPLELLLFLAGTHILMAAVPLTTF
 AVVQLRRQASSDYDWNESICKVFVSTYYTLALATCFVSLSYHRMVMWRWPVNYRLSNAKKQALHAVMG
 IWMVSFILSTLPSIGWHNNGERYYARGCQFIVSKIGLFGVCFSLLLGGIVMGLVCVAITFYQTLWARP
 RRARQARRAGGSVGAAGGLGGLGTRPAFEVPAIVVEDTRGKRRSSLDGSESAKTSLQVTNLVSAIVFLY
 DSLTGVPILVVSFFSLKSDSAPPWMLAVLWCSMAQTLPLPSFIWSCERYRADVRTVWEQCVAIMSEDDG
 DDDGACDDYTDGRVCKIRFDANGATGSGSRDPTQVKLLPGRHMLFPPLERVHYLQVPLSRRLSHDETINV
 STPRAPGSFLHKWSSDIRILPAQSRALGGPPEYPGQRLRIEDEDEEEAEGGGLASLRQFLESGLVLS
 GGGPPRPGPFREEITTFIDETPLPSPTASPGSPRRRPLGFSPRRLSLGSPESRAVGLPLGLSAGRRR
 SLTGSESSRAWGRPWGPNIFPQLTLPS*P

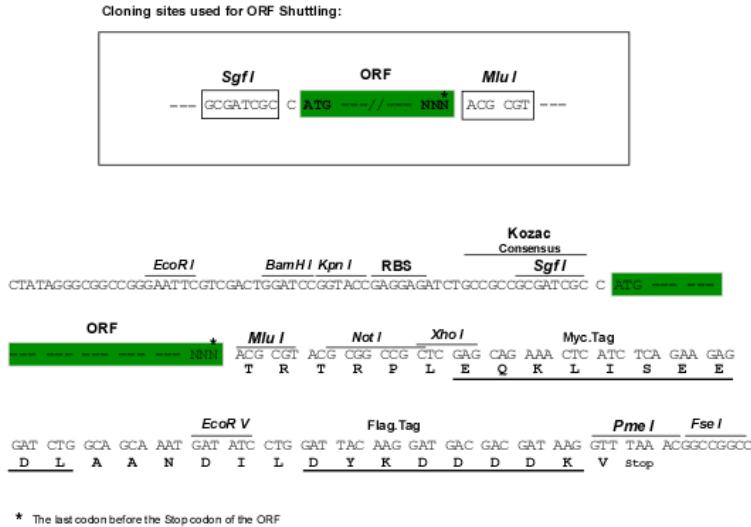
TRTRPLEQKLISEEDLAANDILDYKDDDDKV

Chromatograms:

https://cdn.origene.com/chromatograms/ja1688_b07.zip

Restriction Sites: SgfI-MluI

Cloning Scheme:



ACCN: NM_001108646

ORF Size: 1764 bp

OTI Disclaimer: The molecular sequence of this clone aligns with the gene accession number as a point of reference only. However, individual transcript sequences of the same gene can differ through naturally occurring variations (e.g. polymorphisms), each with its own valid existence. This clone is substantially in agreement with the reference, but a complete review of all prevailing variants is recommended prior to use. [More info](#)

OTI Annotation: This clone was engineered to express the complete ORF with an expression tag. Expression varies depending on the nature of the gene.

Components: The ORF clone is ion-exchange column purified and shipped in a 2D barcoded Matrix tube containing 10ug of transfection-ready, dried plasmid DNA (reconstitute with 100 ul of water).

Reconstitution Method:

1. Centrifuge at 5,000xg for 5min.
2. Carefully open the tube and add 100ul of sterile water to dissolve the DNA.
3. Close the tube and incubate for 10 minutes at room temperature.
4. Briefly vortex the tube and then do a quick spin (less than 5000xg) to concentrate the liquid at the bottom.
5. Store the suspended plasmid at -20°C. The DNA is stable for at least one year from date of shipping when stored at -20°C.

RefSeq Size: 2873 bp

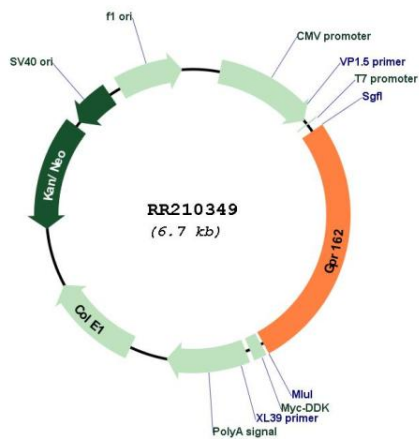
RefSeq ORF: 1767 bp

Locus ID: 362436

Cytogenetics: 4q42

MW: 64 kDa

Product images:



Circular map for RR210349