

Product datasheet for **RR210333**

Gpr6 (NM_031806) Rat Tagged ORF Clone

Product data:

Product Type: Expression Plasmids
 Product Name: Gpr6 (NM_031806) Rat Tagged ORF Clone
 Tag: Myc-DDK
 Symbol: Gpr6
 Mammalian Cell Selection: Neomycin
 Vector: pCMV6-Entry (PS100001)
 E. coli Selection: Kanamycin (25 ug/mL)
 ORF Nucleotide Sequence: >RR210333 representing NM_031806
 Red=Cloning site Blue=ORF Green=Tags(s)

TTTTGTAATACGACTCACTATAGGGCGGCCGGAATTCGTCGACTGGATCCGGTACCGAGGAGATCTGCC
 GCC**CGATCGCC**

ATGAACGCTAGCGCCGCCGCGCTCAACGAGTCCCAGGTGGTGGCAGTAGCGGCCGAGGGAGCGGCAGCTG
 CGGCTACAGCAGCAGGGACACCGGACACCAGCGAATGGGACCTCCGGCAGCATCCGGCGGCTGGGAGG
 CGGCGGAGGACCTAACGGGTCACTGGAGCTGTCTTCGACGCTGCCCGCAGGACCTCAGGACTTCTGCTT
 TCGGCAGTGAATCCCTGGGATGTGCTGCTGCGTGTGCGGGACTGTGATCGCAGGCGAAAATGCGCTGG
 TGGTGGCGCTCATCGCATCCACTCCCAGCTGCGCAGCCCATGTTGTGCTCGTGGGTAGTCTGGCCAC
 TGCTGACCTGCTGGCGGGCTGTGGCCTCATCTACACTTCGTGTTCCAGTACGTGGTGCCCTCGGAGACT
 GTGAGCCTGCTCATGGTGGGCTTCTGGTGGCGTCTTCGCCGCTCAGTCAGCAGCCTGCTCGCTATCA
 CAGTGGACCGTTACCTGTCCCTTTACAACGCGCTCACCTACTACTCGCGCCGGACCCTGTTGGGCGTGCA
 CCTCTTGCTAGCAGCCACCTGGACAGTGTCCCTCGGGTTGGGTTGCTGCCCGTTCTAGGCTGGAAGTGC
 TTGGCTGACCGCGCTCCTGCAGCGTGGTGGCCCCCTGACACGCAGCCATGTGGCGTTGCTCTCCACTT
 CCTTCTTTGGTCTTTGGCATCATGCTACACTTGTACGTGCGCATCTGCCAGTGGTCTGGCGCCACGC
 CCACCAGATCGCTTTGCAACAGCACTGCCTAGCACCACCACTTAGCAGCCACCAGAAAGGGTGTGGGA
 ACTTTGGCGGTGGTGTAGGCACCTTTGGGGCCAGCTGGCTGCCCTTCGCATCTATTGTGTGGTGGGA
 GCCAAGAGGACCCGCCATCTACACCTATGCCACCCTGCTGCCTGCCACCTATAACTCCATGATCAATCC
 CATCATCTATGCCTTCCGCAACCAGGAGATCCAGCGTGCCTTGTGGCTCCTGTTCTGTGGCTGTTTCCAA
 TCCAAAGTGCCCTTCGCTCCAGGTCCCCCAGTGAGGTC

ACGCGTACGCGGCCGCTCGAGCAGAACTCATCTCAGAAGAGGATCTGGCAGCAAATGATATCCTGGATT
 ACAAGGATGACGACGATAAGGTTTAA



[View online »](#)

Protein Sequence: >RR210333 representing NM_031806
 Red=Cloning site Green=Tags(s)

MNASAAALNESQVVAVAAEGAAAATAAGTPDPTSEWGPPAASAALGGGGPNGSLELSSQLPAGPSGLLL
 SAVNPWDVLLCVSGTVIAGENLVVALIASTPALRTPMFVLVGLATADLLAGCGLILHFVFQYVVPSET
 VSLLMVGFLVASFAASVSSLLAITVDRLSLYNALTYYSRRTLLGVHLLAATWTVSLGLLPLVGLWNC
 LADRASCVVVRPLTRSHVALLSTSFFVVFIMLHLYVRIQVVRHHAHQIALQHQCLAPPHLAATRKGVG
 TLAVVLGTFGASWLPFAIYCVVGSQEDPAIYTYATLLPATYNSMINPIIYAFRNQEIQRALWLLFCGCFQ
 SKVPFRRSRPSEV

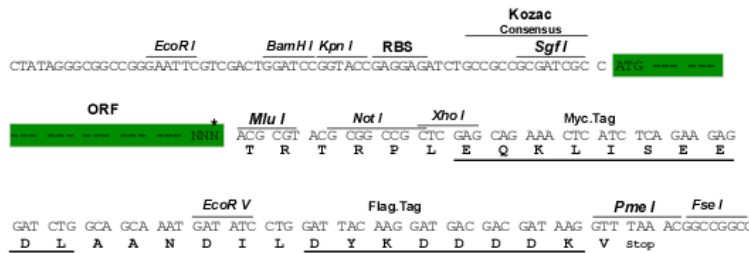
TRTRPLEQKLISEEDLAANDILDYKDDDDKV

Chromatograms: https://cdn.origene.com/chromatograms/ja2124_g06.zip

Restriction Sites: SgfI-MluI

Cloning Scheme:

Cloning sites used for ORF Shuttling:



* The last codon before the Stop codon of the ORF

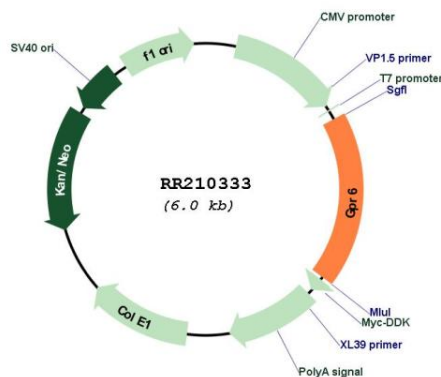
ACCN: NM_031806

ORF Size: 1089 bp

OTI Disclaimer: Due to the inherent nature of this plasmid, standard methods to replicate additional amounts of DNA in E. coli are highly likely to result in mutations and/or rearrangements. Therefore, OriGene does not guarantee the capability to replicate this plasmid DNA. Additional amounts of DNA can be purchased from OriGene with batch-specific, full-sequence verification at a reduced cost. Please contact our customer care team at custsupport@origene.com or by calling 301.340.3188 option 3 for pricing and delivery.

The molecular sequence of this clone aligns with the gene accession number as a point of reference only. However, individual transcript sequences of the same gene can differ through naturally occurring variations (e.g. polymorphisms), each with its own valid existence. This clone is substantially in agreement with the reference, but a complete review of all prevailing variants is recommended prior to use. [More info](#)

OTI Annotation:	This clone was engineered to express the complete ORF with an expression tag. Expression varies depending on the nature of the gene.
Components:	The ORF clone is ion-exchange column purified and shipped in a 2D barcoded Matrix tube containing 10ug of transfection-ready, dried plasmid DNA (reconstitute with 100 ul of water).
Reconstitution Method:	<ol style="list-style-type: none"> 1. Centrifuge at 5,000xg for 5min. 2. Carefully open the tube and add 100ul of sterile water to dissolve the DNA. 3. Close the tube and incubate for 10 minutes at room temperature. 4. Briefly vortex the tube and then do a quick spin (less than 5000xg) to concentrate the liquid at the bottom. 5. Store the suspended plasmid at -20°C. The DNA is stable for at least one year from date of shipping when stored at -20°C.
RefSeq:	<u>NM_031806.1, NP_113994.1</u>
RefSeq Size:	2236 bp
RefSeq ORF:	1092 bp
Locus ID:	83683
UniProt ID:	<u>P51651</u>
Cytogenetics:	20q12
MW:	38.6 kDa
Gene Summary:	may mediate later differentiation events within the superficial cortical layers during cerebral cortical development [RGD, Feb 2006]

Product images:


Circular map for RR210333