

## Product datasheet for **RR210317**

### **Krt81 (NM\_001008814) Rat Tagged ORF Clone**

#### **Product data:**

Product Type:	Expression Plasmids
Product Name:	Krt81 (NM_001008814) Rat Tagged ORF Clone
Tag:	Myc-DDK
Symbol:	Krt81
Synonyms:	Kb21
Vector:	pCMV6-Entry (PS100001)
E. coli Selection:	Kanamycin (25 ug/mL)
Cell Selection:	Neomycin



[View online »](#)

**ORF Nucleotide Sequence:**

>RR210317 representing NM\_001008814  
 Red=Cloning site Blue=ORF Green=Tags(s)

TTTTGTAATACGACTCACTATAGGGCGGCCGGAATTCGTCGACTGGATCCGGTACCGAGGAGATCTGCC  
 GCC**CGGATCGCC**

ATGACCTGTGGATCAGGATTCTGTGGCCGCGCCTTCAGCTGCGCCTCAGCCTGTGGGCCCGTCCCGGCC  
 GCTGCTGCATCACTGCAGCTCCCTACAGGGGCATCTCCTGCTACCGCGGACTCTCAGGGGTTTCGGCAG  
 CCGCAGTGTCTGCGGGCCCTCCGCTCTGGCTCCTGTGGACGAGCTTCGGATACCGATCCGGAGGCGTC  
 TGTGGGCCAGCCCGCCCTGCATCACCACGCTCTCTGTCAACGAGAGCCTGCTCACCCCCCTCAACCTGG  
 AGATCGACCCCAATGCTCAGTGCCTGAAGCATGAGGAGAAGGAGCAGATCAAGTGCCTGAACAGCAGGTT  
 CGCGGCCCTTCATCGACAAGGTGCGCTTCTGGAGCAGCAGAACAAGTGTGGAGACCAAGTGGCAGTTC  
 TTCGAAACCGCAAGTGTGTGAGAGCAACGTGGAGCCTCTGTTGAGGGCTACATCGAGACTCTGAGGC  
 GGGAGGCTGAGTGTGTGGAGGCCAGAGTGGCAGGCTGGCTGCTGAGCTCAACCATGCTCAGGAGGCCAT  
 GGAGGGCTACAAGAAGAGGTACGAGGAGGAAGTTCTCTGAGAGCCACAGCTGAGAATGAGTTTGTGGCT  
 CTGAAGAAGGATGTGGACTGTGCCTACCTGCGCAAGTCAGACCTGGAGGCCAACACAGAGGCGCTGACCC  
 AGGAGATCGACTTCTGAGGCGACTGTATGAGGAGGAGACCCGCATCCTCCACGCCACATCTCAGACAC  
 CTCCGTCACTCGTCAAGATGGACAACAGCCGGGACCTGAACATGGACTGCGTCAATTGCTGAGATCAAGGCT  
 CAGTACGATGACATTGCCAGCCGAGCCGCGCAGAGGCCGAGTCTGGTACCGCACCAAGTGTGAGGAGA  
 TAAAGGCCACAGTGATCCGGCATGGAGAGACCTGCGTCGCACCAGAGAGGAGATCAATGAGCTGAACAG  
 AATCATCCAGAGGCTGACAGCCGAGATCGAGAACGCCAAGTGCCAGAACCAAGCTGGAGGCTGCTGTG  
 ACCCAGTCTGAGCAGCAGGAGAGGCTGCCCTCACCGATGCCCGCTGCAAGCTGGCTGAGCTGGAGGCTG  
 CCCTGCAGAAGGCCAAGCAGGACATGGCTGCCCTCAAGGAATACCAGGAGGTGATGAATCCAAGCT  
 GGGTCTGGACATCGAGATCGCCACCTACAGGCACCTGCTGGAGGGCGAGGAACAGAGACTGTGTGAAGGT  
 GTCGGAGCTGTGAATGTCTGTGTGTCAGCAGCTCCCGCGGAGGAGTTGTGTGTGGGACCTGTGCGTGTGAG  
 GTTCCAGGCCGCTGACCGGCAGCGCCTGCAGCGCCCCCTGCAGCGGGAATTGGCAGTGAACACAGGCT  
 GTGTGCACCCTGTGGCTCAGCTGTGTCTGTGGCCGTAATGTAAGTGCCTTACATCCCGGCCCTTTC  
 ATAGCATTTTCCTGAGTCATCCCTGGCTGACCAATATTGGGACCTAGAAGAAGGGACTCAGCCACTCG  
 CTCACTTTGAAATGACCCTCACTCTGGCCCTCTGGTCTCCCTGGAGGACCCCTTTGCTCTCAGAAGT  
 GAATACTGGCTTC

**ACGCGT**ACGCGGCCGCTCGAGCAGAAACTCATCTCAGAAGAGGATCTGGCAGCAAATGATATCCTGGATT  
 ACAAGGATGACGACGATAAGGTTTAA

**Protein Sequence:**

>RR210317 representing NM\_001008814  
 Red=Cloning site Green=Tags(s)

MTCGSGFCGRAFCASACGPRPGRCCITAAPYRGISCYRGLSGGFSGRSVCGAFRSGSCGRSFGYRSGGV  
 CGPSPPCITTVSVNESLLTPLNLEIDPNAQCVKHEEKEQIKCLNSRFAAFIDKVRFLFQQNKLLETQWQF  
 FQNRKCCESNVEPLFEGYIETLRREAECVEADSGRLAAELNHAQEAMEGYKKRYEEVSLRATAENEFVA  
 LKKDVEDCAYLRKSDLEANTEALTQEIDFLRRLYEETRILHAHISDTSVIVKMDNSRDLNMDCVIAEIKA  
 QYDDIASRSRAEAEASWYRTKCEEIKATVIRHGETLRRRTREEINELNRIIQRLTAEIENAKCQNTKLEAAV  
 TQSEQQGEAALTDARCKLAELEAALQKAKQDMACLLKEYQEVMSKLGLDIEIATYRHLLEGEEQRLCEG  
 VGAVNVCVSSSRGGVCGDLCVSGSRPVTGSACSAPCSGNLAVNTGLCAPCGSAVSCGRKCKLPSPHGPFF  
 IAFHPPESSLADQYWDLEEGTQPLAHFEMTLTLPSPGLPGGPPLLSEVNTGF

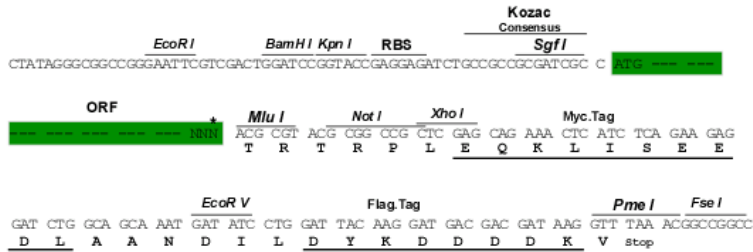
**TR**TRPLEQKLISEEDLAANDILDYKDDDDKV

**Restriction Sites:**

Sgfl-MluI

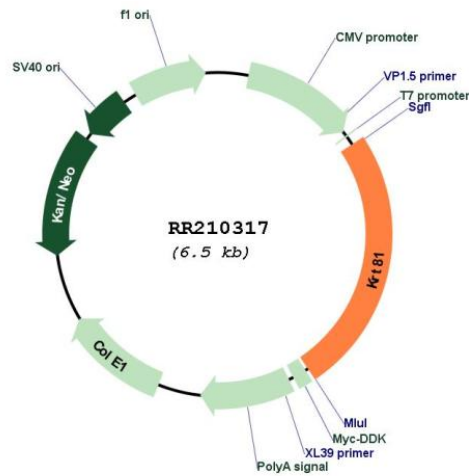
## Cloning Scheme:

Cloning sites used for ORF Shutting:



\* The last codon before the Stop codon of the ORF

## Plasmid Map:



<b>ACCN:</b>	NM_001008814
<b>ORF Size:</b>	1623 bp
<b>OTI Disclaimer:</b>	The molecular sequence of this clone aligns with the gene accession number as a point of reference only. However, individual transcript sequences of the same gene can differ through naturally occurring variations (e.g. polymorphisms), each with its own valid existence. This clone is substantially in agreement with the reference, but a complete review of all prevailing variants is recommended prior to use. <a href="#">More info</a>
<b>OTI Annotation:</b>	This clone was engineered to express the complete ORF with an expression tag. Expression varies depending on the nature of the gene.
<b>Components:</b>	The ORF clone is ion-exchange column purified and shipped in a 2D barcoded Matrix tube containing 10ug of transfection-ready, dried plasmid DNA (reconstitute with 100 ul of water).
<b>Reconstitution Method:</b>	<ol style="list-style-type: none"><li>1. Centrifuge at 5,000xg for 5min.</li><li>2. Carefully open the tube and add 100ul of sterile water to dissolve the DNA.</li><li>3. Close the tube and incubate for 10 minutes at room temperature.</li><li>4. Briefly vortex the tube and then do a quick spin (less than 5000xg) to concentrate the liquid at the bottom.</li><li>5. Store the suspended plasmid at -20°C. The DNA is stable for at least one year from date of shipping when stored at -20°C.</li></ol>
<b>RefSeq:</b>	<a href="#">NM_001008814.1</a> , <a href="#">NP_001008814.1</a>
<b>RefSeq Size:</b>	1626 bp
<b>RefSeq ORF:</b>	1626 bp
<b>Locus ID:</b>	407761
<b>Cytogenetics:</b>	7q36
<b>MW:</b>	59.3 kDa
<b>Gene Summary:</b>	member of the keratin family of intermediate filament proteins [RGD, Feb 2006]