

## Product datasheet for **RR210302**

### Pitpnb (NM\_053742) Rat Tagged ORF Clone

#### Product data:

Product Type:	Expression Plasmids
Product Name:	Pitpnb (NM_053742) Rat Tagged ORF Clone
Tag:	Myc-DDK
Symbol:	Pitpnb
Vector:	pCMV6-Entry (PS100001)
E. coli Selection:	Kanamycin (25 ug/mL)
Cell Selection:	Neomycin
ORF Nucleotide Sequence:	>RR210302 representing NM_053742 Red=Cloning site Blue=ORF Green=Tags(s)

TTTTGTAATACGACTCACTATAGGGCGGCCGGAATTCGTCGACTGGATCCGGTACCGAGGAGATCTGCC  
GCC**CGATCGC**C

ATGGTGCTGATTAAGGAATTCGGTGTAGTTTTGCCGTGTTCTGTTCAAGAGTATCAGGTTGGACAGCTTT  
ACTCTGTTGCAGAAGCGAGTAAGAATGAACTGGTGGTGGAGAAGGAATCGAAGTCTTGAAGAATGAACC  
TTATGAAAATGATGGCGAGAAGGGACAGTACACACACAAAATCTACCACCTGAAGAGCAAAGTCCCTGCG  
TTCGTGAGGATGATTGCTCCCGAGGGCTCCTTGGTGTTCATGAGAAAGCCTGGAATGCTTACCCCTACT  
GCAGAACAATTGTAAACGAATGAGTACATGAAAGATGACTTCTTCATCAAAATCGAAAATGGCACAAACC  
TGACTTGGGAACATTAGAAAATGTTACCGTTTTAGATCCAAACACGTGGAAAACCGTTGAAATTGTCAC  
ATAGACATTGCAGATCGAAGTCAGGTTGAACCAGCAGACTACAAAGCTGATGAGGACCCTGCGTTATTCC  
AGTCAGTCAAGACCAAGAGAGGCCCCCTGGGACCTAACTGGAAGAAGGAGCTGGCAAACACCCTGACTG  
TCCTAAGATGTGTGCTATAAGCTGGTACCATCAAGTCAAGTGGTGGGGCTGCAGAGCAAAGTAGAG  
AACTTCATCCAGAAGCAAGAAAAACGGATATTTACAACTTACATCGCCAGCTCTTTTGTGGATTGACA  
AGTGGATTGACCTGACAATGGAAGACATTAGGAGAATGGAGGACGAGACTCAGAAAGAACTAGAAACAAT  
CGTAAGAAGGGTTCGGTCCGAGGCACGTGGCTGCTGATGCC

**ACGCGT**ACGCGGCCGCTCGAGCAGAAACTCATCTCAGAAGAGGATCTGGCAGCAAATGATATCCTGGATT  
ACAAGGATGACGACGATAAGGTTTAA



[View online »](#)

Protein Sequence: >RR210302 representing NM\_053742  
 Red=Cloning site Green=Tags(s)

MVLIKEFRVVLPCSVQEYVQGQLYSVAEASKNETGGGEGIEVLKNEPYENDGEKGQYTHKIYHLKSKVPA  
 FVRMIAPEGSLVFHEKAWNAYPYCRTIVTNEYMKDDFFIKIETWHKPDGLTLENVHGLDPNTWKTVEIVH  
 IDIADRSQLVEPADYKADEDPALFQSVKTKRGPLGNWKKELANTPDCPKMCAKLVTIKFKWGLQSKVE  
 NFIQKQEKRIFTNLHRQLFCWIDKWIDLTMEDIIRMEDETQKELETMRKKGSVRGTSAADA

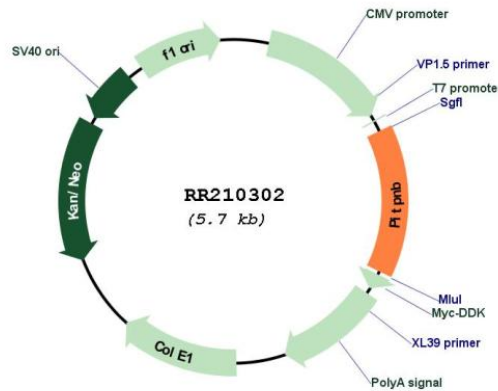
TRTRPLEQKLISEEDLAANDILDYKDDDDKV

Restriction Sites: SgfI-MluI

Cloning Scheme:



Plasmid Map:



ACCN: NM\_053742

ORF Size: 813 bp

<b>OTI Disclaimer:</b>	The molecular sequence of this clone aligns with the gene accession number as a point of reference only. However, individual transcript sequences of the same gene can differ through naturally occurring variations (e.g. polymorphisms), each with its own valid existence. This clone is substantially in agreement with the reference, but a complete review of all prevailing variants is recommended prior to use. <a href="#">More info</a>
<b>OTI Annotation:</b>	This clone was engineered to express the complete ORF with an expression tag. Expression varies depending on the nature of the gene.
<b>Components:</b>	The ORF clone is ion-exchange column purified and shipped in a 2D barcoded Matrix tube containing 10ug of transfection-ready, dried plasmid DNA (reconstitute with 100 ul of water).
<b>Reconstitution Method:</b>	<ol style="list-style-type: none"><li>1. Centrifuge at 5,000xg for 5min.</li><li>2. Carefully open the tube and add 100ul of sterile water to dissolve the DNA.</li><li>3. Close the tube and incubate for 10 minutes at room temperature.</li><li>4. Briefly vortex the tube and then do a quick spin (less than 5000xg) to concentrate the liquid at the bottom.</li><li>5. Store the suspended plasmid at -20°C. The DNA is stable for at least one year from date of shipping when stored at -20°C.</li></ol>
<b>RefSeq:</b>	<a href="#">NM_053742.1</a> , <a href="#">NP_446194.1</a>
<b>RefSeq Size:</b>	2680 bp
<b>RefSeq ORF:</b>	816 bp
<b>Locus ID:</b>	114561
<b>UniProt ID:</b>	<a href="#">P53812</a>
<b>Cytogenetics:</b>	12q16
<b>MW:</b>	31.4 kDa
<b>Gene Summary:</b>	complements a yeast sec14 mutation; may act as a phosphatidylinositol transfer protein [RGD, Feb 2006]