

Product datasheet for **RR210301**

Npffr1 (NM_022291) Rat Tagged ORF Clone

Product data:

Product Type: Expression Plasmids
Product Name: Npffr1 (NM_022291) Rat Tagged ORF Clone
Tag: Myc-DDK
Symbol: Npffr1
Synonyms: Gpr147; NPFF1; OT7T022
Vector: pCMV6-Entry (PS100001)
E. coli Selection: Kanamycin (25 ug/mL)
Cell Selection: Neomycin
ORF Nucleotide Sequence: >RR210301 representing NM_022291
 Red=Cloning site Blue=ORF Green=Tags(s)

TTTTGTAATACGACTCACTATAGGGCGCCGGAATTCGTCGACTGGATCCGGTACCGAGGAGATCTGCC
 GCC**CGATCGCC**

ATGGAGGCGGAGCCCTCCAGCCTCCCAACGGCAGCTGGCCCTGGGTGAGAACGGGAGTGATGTGGAGA
 CCAGCATAGCAACCAGCCTCACCTTCTCCTCCTACTACCAACACTCCTCTCCGGTGGCAGCCATGTTTCAT
 CGCGGCCTACGTGCTCATCTTCTCCTCTGCATGGTGGGCAACACCTGGTCTGCTTCATTGTGCTCAAG
 AACCGGCACATGCGCACTGTACCAACATGTTTATCCTCAACCTGGCCGTGAGCGACCTGCTGGTGGCA
 TCTTCTGCATGCCACAACCCTTGTGGACAACCTATCACTGGTTGGCCTTTTGACAACGCCACATGCAA
 GATGAGCGGCTTGGTGCAGGGCATGTCCGTGTCTGCATCGGTTTTCACTGGTGGCCATCGCTGTGGAA
 AGGTTCCGCTGCATCGTGACCCCTTCCGCGAGAAGCTGACCCCTCGGAAGGCGCTGTTACCATCGCGG
 TGATCTGGGCTCTGGCGCTGCTCATCATGTGTCCCTCGGCGTCACTCTGACAGTCACCCGAGAGGAGCA
 TCACTTATGTGGATGCTCGTAACCGCTCCTACCCGCTCTACTCGTGTGGGAGCCTGGCCCGAGAAG
 GGATGCGCAAGGTCTACACCGCGGTGCTTTCGCGCACATCTACCTGGTGGCCTGGCGCTCATCGTAG
 TGATGTACGTGCGCATCGCGCGAAGCTATGCCAGGCCCGGTCTGCGCGCACACGGAGGAGCGGT
 GGCCGAGGGTGGCCGCACTTTCGCGCCGTAGGGCCCGGTGGTGCACATGCTGGTTCATGGTGGCGCTCTTC
 TTCACGTTGTCTGGCTGCCACTCTGGGTGCTGTCTGCTCATCGACTATGGGGAGCTGAGCGAGCTGC
 AACTGCACCTGTGTCCGTCTACGCCTTCCCTTGGCACACTGGCTGGCCTTCTTCCACAGCAGCGCCAA
 CCCCATCATCTACGGCTACTTCAACGAGAACTTCCGCGCGGCTTCCAGGCTGCCTTCCGTGCACAGCTC
 TGCTGGCTCCCTGGCCGCCACAAGCAAGCCTACTCGAGCGGCCAACCGCTCCTGCGCAGGCGGG
 TGGTGGTGGACGTGCAACCCAGCGACTCCGGCCTGCCATCAGAGTCTGGCCCCAGCAGCGGGTCCCAGG
 GCCTGGCCGGCTGCCACTGCGAAATGGCGTGTGGCCATCAGGATGGCCCGGGGAAGGCCAGGCTGC
 AACCACATGCCCTCACCATCCCGCCTGGAACATT

ACGCGTACGCGGCCGCTCGAGCAGAACTCATCTCAGAAGAGGATCTGGCAGCAAATGATATCCTGGATT
 ACAAGGATGACGACGATAAGGTTTAA



[View online »](#)

Protein Sequence: >RR210301 representing NM_022291
Red=Cloning site Green=Tags(s)

MEAEPSQPPNGSWPLGQNGSDVETSIATSLTFSSYYQHSSPVAAMFIAAYVLIFLLCMVGNTLVCFIVLK
 NRHMRTVTNMFILNLAVSDLLVGIFCMP TTLVDNLIITGWPF DNATCKM SGLVQGM SVSASVFTLVIAIVE
 RFRCIVHPFREKLT LRKALFTIAVIWALALLIMCPSAVTLTVTREEHHFMLDARNRSYPLYSCWEAWPEK
 GMRKVYTA VLF AHIYLVPLALIVVMYVRIARKLCQAPGPARDTEEAVAEGGRTSRRRRARVHMLVMVALF
 FTLSWLPLWVLLLLIDYGELSELQLHLLSVYAFPLAHWLAFFHSSANPIIYG YFNENFRRGFQAAFRQL
 CWPPWAAHKQAYSERP NRLLRRRVVVDVQPSD SGLPSESGPSSGVP GPGR LPLRNGRVAHQDGPGE GPGC
 NHMPLTIPAWNI

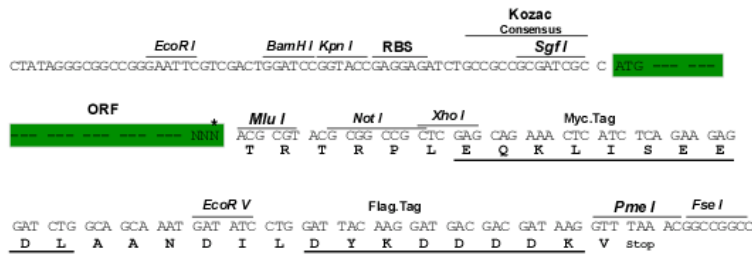
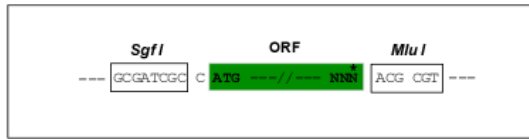
TRTRPLEQKLISEEDLAANDILDYKDDDDKV

Restriction Sites:

SgfI-MluI

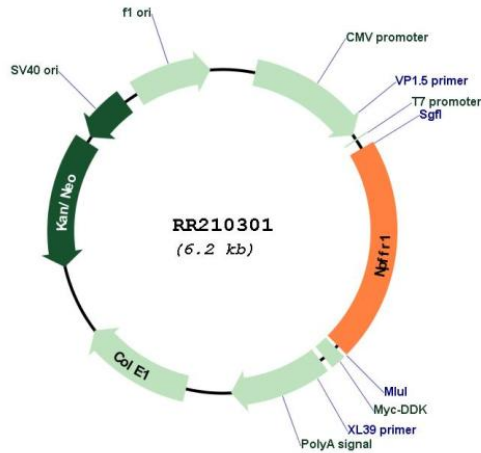
Cloning Scheme:

Cloning sites used for ORF Shuttling:



* The last codon before the Stop codon of the ORF

Plasmid Map:



ACCN:

NM_022291

ORF Size:	1296 bp
OTI Disclaimer:	The molecular sequence of this clone aligns with the gene accession number as a point of reference only. However, individual transcript sequences of the same gene can differ through naturally occurring variations (e.g. polymorphisms), each with its own valid existence. This clone is substantially in agreement with the reference, but a complete review of all prevailing variants is recommended prior to use. More info
OTI Annotation:	This clone was engineered to express the complete ORF with an expression tag. Expression varies depending on the nature of the gene.
Components:	The ORF clone is ion-exchange column purified and shipped in a 2D barcoded Matrix tube containing 10ug of transfection-ready, dried plasmid DNA (reconstitute with 100 ul of water).
Reconstitution Method:	<ol style="list-style-type: none">1. Centrifuge at 5,000xg for 5min.2. Carefully open the tube and add 100ul of sterile water to dissolve the DNA.3. Close the tube and incubate for 10 minutes at room temperature.4. Briefly vortex the tube and then do a quick spin (less than 5000xg) to concentrate the liquid at the bottom.5. Store the suspended plasmid at -20°C. The DNA is stable for at least one year from date of shipping when stored at -20°C.
RefSeq:	NM_022291.2 , NP_071627.2
RefSeq Size:	1307 bp
RefSeq ORF:	1299 bp
Locus ID:	64107
Cytogenetics:	20q11
MW:	48.3 kDa
Gene Summary:	a G protein-coupled receptor that binds neuropeptide FF and BIBP3226, an anorexigenic Y1 receptor ligand and has a potential role in feeding [RGD, Feb 2006]