

## Product datasheet for RR210286

### Psmc1 (NM\_057123) Rat Tagged ORF Clone

#### Product data:

Product Type:	Expression Plasmids
Product Name:	Psmc1 (NM_057123) Rat Tagged ORF Clone
Tag:	Myc-DDK
Symbol:	Psmc1
Synonyms:	s4
Vector:	pCMV6-Entry (PS100001)
E. coli Selection:	Kanamycin (25 ug/mL)
Cell Selection:	Neomycin
ORF Nucleotide Sequence:	>RR210286 representing NM_057123 Red=Cloning site Blue=ORF Green=Tags(s)

TTTTGTAATACGACTCACTATAGGGCGGCCGGAATTCGTCGACTGGATCCGGTACCGAGGAGATCTGCC  
GCC**CGGATCGCC**

ATGGGTCAAAGTCAGAGTGGTGGCCATGGTCTGGGGTGGCAAGAAGGATGACAAGGACAAGAAAAAGA  
AATATGAACCTCCTGTCCAACTAGAGTGGGAAAAAGAAGAAGAAAACCAAGGGACCAGATGCTGCCAG  
CAAAGTCCACTGGTAACACCTCACACCCAGTGGCCCTGAAATTAAGCTGGAGAGAATAAAAGAC  
TATCTTCTCATGGAGGAAGAATTCATTAGAAATCAGGAACAGATGAAACCACTAGAAGAAAAGCAAGAGG  
AGGAAAGATCAAAGGTGGATGATCTTAGGGAAACCCCGATGTCTGTAGGAACCTTGAAGAGATCATCGA  
TGATAATCACGCCATTGTGTCCACATCGGTGGGCTCAGAACACTACGTCAGCATCCTGTCAATTTGTAGAC  
AAGGATCTGTGGAACCGGGCTGTTTCAGTCTGCTCAACCACAAGGTGCATGCTGTGATAGGGGTGCTCA  
TGGATGACACGGATCCCCTGGTCAAGTGAAGGTGGAAAAGGCCCCAGGAAACCTATGCAGATAT  
TGGGGACTGGACAACAGATCCAGGAAATTAAGGAATCTGTGGAGCTCCCTCTTACCCACCCTGAGTAT  
TATGAGGAGATGGGGATAAAACCACCTAAGGGGTGCTTCTCTACGGCCCGCCAGGAACAGGTAAGAACTC  
TATTGGCCAAAGCAGTAGCGAACAGACTTACGCGACTTCTTGGCAGTGGTTGGCTCAGAGCTTATTCA  
GAAGTACCTAGGTGACGGGCCAAAGCTGGTCCGGGAGCTCTCCGGTTCGCTGAGGAACACGCACCGTCC  
ATTGTGTTCAATGATGAAATCGACGCCATTGGGACCAAAAGATATGATTCAAACCTCTGGAGTGAGCGGG  
AAATCCAGCGGACAATGTTGGAACCTGTTGAACAGTTGGATGGATTTGATTTCGAGGGGAGATGTAAGT  
TATCATGGCCACAACCGAATAGAACTTTGGATCCAGCACTTATCAGACCAGGCCGATTGACAGAAAAG  
ATCGAGTTCCTCCCTGCCTGATGAAAAGACCAAGAAGCGCATCTTCCAGATCCACACAAGCAGGATGACGC  
TGGCTGATGATGTAACCTTGGATGACTTGATCATGGCAAAGGATGACCTCTCTGGGGCTGACATCAAGGC  
AATCTGCACAGAGGCTGGCTTGATGGCTCTGCGGGAACGCAGGATGAAAGTGACAAACGAAGACTTCAAG  
AAATCTAAGGAGAACGTTCTGTATAAAAAACAAGAAGGCACCCCTGAGGGGCTGTATCTC

**ACGCGT**ACGCGGCCGCTCGAGCAGAAACTCATCTCAGAAGAGGATCTGGCAGCAAATGATATCCTGGATT  
ACAAGGATGACGACGATAAGGTTTAA



**Protein Sequence:** >RR210286 representing NM\_057123  
 Red=Cloning site Green=Tags(s)

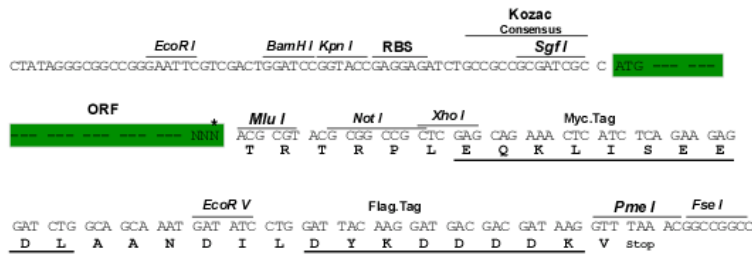
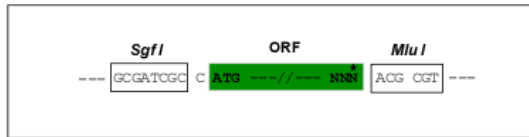
MGQSQSGHGPGGGKDDDKKKKKYEPVPTRVGKKKKTKGPDAAASKLPLVTPHTQCRLKLLKLERIKD  
 YLLMEEEFIRNQEOMKPLEEKQEEERSKVDDLRTGTPMSVGTLEEIIDDNHAIIVSTSVGSEHYVSIILSFVD  
 KDLLLEPGCSVLLNHKVVHAVIGVLMDDTDLVTVMKVEKAPQETADIGGLDNQIQEIKESVELPLTHPEY  
 YEEMGIKPPKGVILYPPGTGKTLAKAVANQTSATFLRVVGSSELIQKYLGDGPKLVRELFVRAEEHAPS  
 IVFIDEIDAIGTKRYDSNSGGEREIQRMLELLNQLDGFDSRGDVKVMATNRIETLDPALIRPGRIDRK  
 IEFPLPDEKTKRIFQIHTSRMTLADDVTLDDLIMAKDDLSGADIKAICTEAGLMALRERRMKVTNEDFK  
 KSKENVLYKKQEGTPEGLYL

TRTRPLEQKLISEEDLAANDILDYKDDDDKV

**Restriction Sites:**  
**Cloning Scheme:**

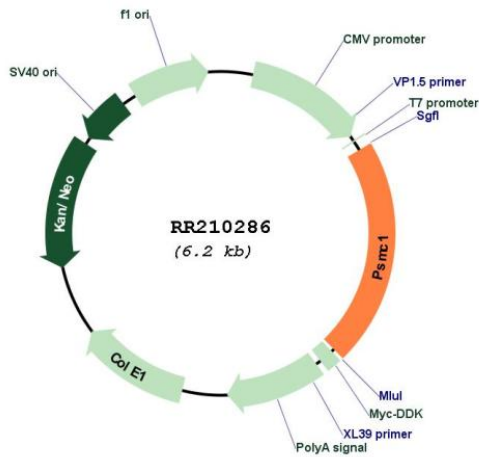
SgfI-MluI

Cloning sites used for ORF Shuttling:



\* The last codon before the Stop codon of the ORF

**Plasmid Map:**



**ACCN:** NM\_057123

<b>ORF Size:</b>	1320 bp
<b>OTI Disclaimer:</b>	The molecular sequence of this clone aligns with the gene accession number as a point of reference only. However, individual transcript sequences of the same gene can differ through naturally occurring variations (e.g. polymorphisms), each with its own valid existence. This clone is substantially in agreement with the reference, but a complete review of all prevailing variants is recommended prior to use. <a href="#">More info</a>
<b>OTI Annotation:</b>	This clone was engineered to express the complete ORF with an expression tag. Expression varies depending on the nature of the gene.
<b>Components:</b>	The ORF clone is ion-exchange column purified and shipped in a 2D barcoded Matrix tube containing 10ug of transfection-ready, dried plasmid DNA (reconstitute with 100 ul of water).
<b>Reconstitution Method:</b>	<ol style="list-style-type: none"><li>1. Centrifuge at 5,000xg for 5min.</li><li>2. Carefully open the tube and add 100ul of sterile water to dissolve the DNA.</li><li>3. Close the tube and incubate for 10 minutes at room temperature.</li><li>4. Briefly vortex the tube and then do a quick spin (less than 5000xg) to concentrate the liquid at the bottom.</li><li>5. Store the suspended plasmid at -20°C. The DNA is stable for at least one year from date of shipping when stored at -20°C.</li></ol>
<b>RefSeq:</b>	<a href="#">NM_057123.1</a> , <a href="#">NP_476464.1</a>
<b>RefSeq Size:</b>	1556 bp
<b>RefSeq ORF:</b>	1323 bp
<b>Locus ID:</b>	117263
<b>UniProt ID:</b>	<a href="#">P62193</a>
<b>Cytogenetics:</b>	6q32
<b>MW:</b>	49.2 kDa
<b>Gene Summary:</b>	may play a role in ATP-dependent RNA/DNA unwinding [RGD, Feb 2006]