

Product datasheet for **RR210280**

Rabep1 (NM_019124) Rat Tagged ORF Clone

Product data:

Product Type:	Expression Plasmids
Product Name:	Rabep1 (NM_019124) Rat Tagged ORF Clone
Tag:	Myc-DDK
Symbol:	Rabep1
Vector:	pCMV6-Entry (PS100001)
E. coli Selection:	Kanamycin (25 ug/mL)
Cell Selection:	Neomycin



[View online »](#)

ORF Nucleotide Sequence:

>RR210280 representing NM_019124
 Red=Cloning site Blue=ORF Green=Tags(s)

CTATAGGGCGGCCGGGAATTCGTCTGACTGGATCCGGTACCGAGGAGATCTGCCGCCGCGATCGCCGGCGC
 GCCC

ATGGCGCAGCCGGGCCCGCTCCCAGCCTGACGTTTCTTTTCTTTCAGCAACGGGTAGCAGAATTGGAAAAA
 TTAATGCAGAATTTTACGTGCACAGCAGCAGCTTGAGCAAGAATTTAATCAAAAAGAGAGCAAAATTTAA
 GGAGCTGTATTTGGCTAAAGAGGAGGATCTGAAGCGGCAAAAATGCAGTATTGCAAGCTGCCGAGGATGAC
 TTGGGTACCTTCGGACACAGCTGTGGGAGGCGCAGGCAGAAAATGGAGAATATCAAGGCGATCGCCACAG
 TCTCTGAGAACACTAAGCAAGAAGCTATAGATGAAGTTAAAAGGCAGTGGAGAGAAGAAGTTGCTTCACT
 TCAGGCTGTAATGAAAGAGACTGTGCGTACTATGAGCATCAGTTTACCTGAGGCTGGAGCAGGAACGA
 GCGCAGTGGGCACAGTATCGAGAGTCTGCAGACCCGGGAGATAGCTGACCTAAGAAGAAGTTGTCTGAAG
 GTCAAGAGGAAGAAAATTTAGAAAATGAAATGAAAAGGCCCAAGAGGATGCCGAGAAGCTTCGCTCTGT
 CGTGATGCCCATGGAGAAGGAAATTCAGCCCTGAAAGATAAACTGACAGAAGCTGAAGACAAGATTTAA
 GAGCTGGAGGCCCTCAAAGTTAAGGAACGAATCATTATCTGGAGGCCGAGAAGTCTTGCAGGACTGATC
 TGGAGATGTATGTAGCTGTTTTGAACCCAGAAAATCTGTTCTACAGGAAGATGCTGAGAAAATTGAGGAA
 AGAACTGCATGAAGTTTGCCATCTCTTGGAGCAAGAGCGCAACAACACAACCAGTTAAAACACACGTGG
 CAGAAGGCCAACGACCAGTTTTTGGAACTCAGCGCTTGTGTGAGAGACATGCAGCGAATGGAGATCG
 TGTTAACTTCAGAACAGCTACGACAAGTTGAAGAACTGAAGAAGAAGATCAGGAGGAGGATGAACAACA
 AAGGATCAATAAGGAAAAGATAACAAGAAAATAGACTGAAGAAGAAGTAAAAATACCAAGTATGT
 GCTTTAACTCAAGAAGAATCTTCAACCCCACTATCAAAATGAAGAGGAGCATTAGACAGCACCCATGGGT
 CAGTCCATTCCTTAGATGCAGACTTGTGTTACCATCTGGAGATCCATTAGTAACTCGGACAATGACAT
 GTTTAAAGAGGGACTCCGGAGAGCTCAGTCTACAGACAGCTTGGGAACCTCAAGCTCATTGCAATCCAAA
 GCTTTAGGCTATAACTACAAAGCAAAATCTGCTGGAAATTTGGATGAGTCGGATTTTGGACCACTGGTTG
 GAGCAGATTCTGTGTCTGAGAACTTTGATACTGTGCCCTTGGGTCACTGCAGATGCCAAGTGGATTTAT
 GTTAACCAAGATCAAGAAAGAGCAATTAAGGCAATGACACCTGAACAGGAGGAGACAGCATCCCTCCTC
 TCAAGTGTACACAGGATGGAGAGTGCATATGTCTCTCCTAGTGGTTACCGCTTAGTGAGTGAACCG
 AATGGAATCTCCTGCAGAAAGAGGTACATAATGCTGGAATAAGCTTGGTAGACGTTGTGATATGTGTT
 CAATTATGAAAAACAGTTACAAGGAATTCAGATTCAGGAAGCTGAGACAAGAGACCAGGTAAAAAACTG
 CAGTTAATGCTCAGGCAAGCTAATGACCAGCTAGAGAAGACAATGAAAGAGAAACAGGAGCTAGAGGACT
 TCCTCAGGCAGAGTGCCGAGGACTCAAGCCACCAGATATCTGCACTTGTTTTAAGAGCCCAAGCCTCTGA
 GGTATTACTTGAAGAGTTACAACAGAGTTTTTCCCAAGCAAGAGGGATGTTTCAGGAGCAGATGGCAGTG
 CTGATGCAGTCACGTGAACAGGCTCAGAAAGAGCTGGTGAAGTTACAGAAAGACAATGACAGCCTCCAGG
 GAAAGCATAGCTTGCAATGTGTCATTACAACCTAGCAGAAGACTTCATTCTCCAGATACTGTGCAGGTGCT
 CCGGGAAGTGGTTTTAAAATATCGTGAGAACATTTGTCATGTGCGGACAGCAGCAGACCACATGGAAGAG
 AAGCTGAAGGCTGAAATACTTTTTCTAAAAGAGCAAATTCAGGCGGAACAGTGTTTAAAAGAAAACCTTG
 AAGAGACATTACAGCTGGAATTTGAAAAGGACAGTTGGAATCTACATTAAGAGAGAAGTCGCAACAACCTGAG
 AGCTCCAAGAAAATAAAGTTAATTTAGAGGAACAGTTAAAGAAGGAAACTGCTGCTAAGGCCACTGTTG
 AACAGCTCATGTTTGAAGAGAAGAACAAGCTCAGAGGTTGCAGACAGAATTAGATGTGAGTGAACAAGT
 CCAGAGAGATTTGTAAAATTTCTCAGACTCTTCAGGTGCAAGTATAGAGAGGATCCGGCAAGCAGACTCC
 CTGGAGAGGATCCGGCAATTCTGAATGATACCAAACTGACAGACATTAACCAGTCCCTGAGACA

ACGCGTACGCGGCCGCTCGAGCAGAAAACATCTCAGAAGAGGATCTGGCAGCAATGATATCCTGGATT
 ACAAGGATGACGACGATAAGGTTTAA

Protein Sequence: >RR210280 representing NM_019124
 Red=Cloning site Green=Tags(s)

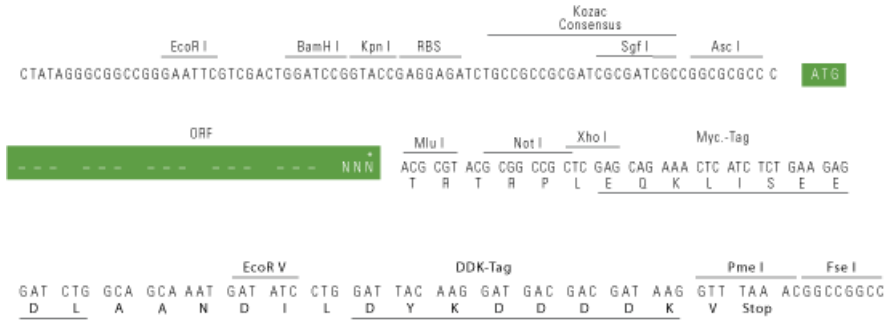
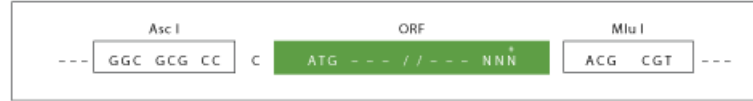
MAQPGPAPQPDVSLQQRVAELEKINAFLRAQQLEQEFNQKRAKFKELYLAKEEDLKRQNAVLAQAQDD
 LGHLRTQLWEAQEMENIKAIATVSENTKQEAIDEVKRQWREEVASLQAVMKETVRDYEHQFHLRLEQER
 AQWAQYRESADREIADLRRRLSEGQEEENLENEMKKAQEDAELRSVVMPEKEIAALKDKL TEAEDKIK
 ELEASKVKELNHYLEAEKSCRTDLEMYAVLNTQKSVLQEDAELRKELHEVCHLLEQERQQHNQLKHTW
 QKANDQFLESQRLLMRDMQRMEIVLTSEQLRQVEELKKKQEEDEQQRINKGKDNKKIDTEEEVKIPVVC
 ALTQEESSTPLSNEEEHLDSTHGSVHSLDADLLLPSGDPF SKSDNMFKEGLRRAQSTDSLGTSSSLQSK
 ALGYNKYAKSAGNLDESDFGPLVGADSVSENFDTVSLGSLQMPSGFMLTKDQERAIKAMTPEQEETASLL
 SSVTQGMESAYVSPSGYRLVSETEWNLLQKEVHNAGNKLGRRCMCSNYEKQLGGIQIEAETRDQVKKL
 QLMRQANDQLEKTMKEKQLEDFLRQSAEDSSHQISALVLRQASEVLEELQQSFSAKRDVQEQMAV
 LMQSREQVSEELVRLQKDNDLQKGHSLHVSLQLAEDFILPDTVQVRELVLKYRENIVHVRTAADHMEE
 KLKAEILFLKEIQAEQCLKENLEETLQLEIENCKEEIASISLKAELERIKVEKGQLESTLREKSQQLE
 SLQEIKVNL EEQLKKETA AKATVEQLMFEENKAQRLQTELDVSEQVQRDFVKLSQTLQVQLERIRQADS
 LERIRAILNDTKLTDINQLPET

TRTRPLEQKLISEEDLAANDILDYKDDDDKV

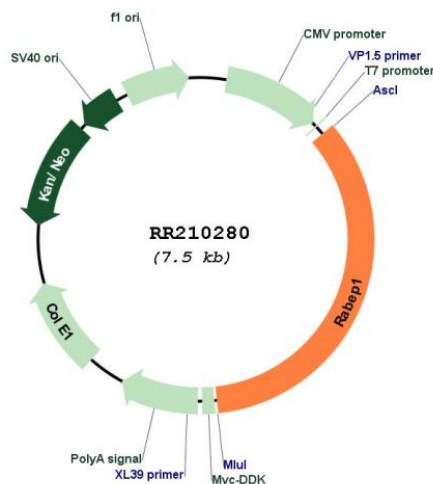
Restriction Sites: AscI-MluI

Cloning Scheme:

Cloning sites used for ORF Shuttling:



* The last codon before the Stop codon of the ORF

Plasmid Map:


ACCN: NM_019124

ORF Size: 2586 bp

OTI Disclaimer: The molecular sequence of this clone aligns with the gene accession number as a point of reference only. However, individual transcript sequences of the same gene can differ through naturally occurring variations (e.g. polymorphisms), each with its own valid existence. This clone is substantially in agreement with the reference, but a complete review of all prevailing variants is recommended prior to use. [More info](#)

OTI Annotation: This clone was engineered to express the complete ORF with an expression tag. Expression varies depending on the nature of the gene.

Components: The ORF clone is ion-exchange column purified and shipped in a 2D barcoded Matrix tube containing 10ug of transfection-ready, dried plasmid DNA (reconstitute with 100 ul of water).

Reconstitution Method:

1. Centrifuge at 5,000xg for 5min.
2. Carefully open the tube and add 100ul of sterile water to dissolve the DNA.
3. Close the tube and incubate for 10 minutes at room temperature.
4. Briefly vortex the tube and then do a quick spin (less than 5000xg) to concentrate the liquid at the bottom.
5. Store the suspended plasmid at -20°C. The DNA is stable for at least one year from date of shipping when stored at -20°C.

RefSeq: [NM_019124.1](#), [NP_061997.1](#)

RefSeq Size: 3465 bp

RefSeq ORF: 2589 bp

Locus ID: 54190

UniProt ID: [O35550](#)

Cytogenetics: 10q24

MW: 99.4 kDa

Gene Summary: human homolog is a member of a protein complex that regulates endosome fusion [RGD, Feb 2006]