

## Product datasheet for RR210272

### Ppfia1 (NM\_001106320) Rat Tagged ORF Clone

#### Product data:

Product Type:	Expression Plasmids
Product Name:	Ppfia1 (NM_001106320) Rat Tagged ORF Clone
Tag:	Myc-DDK
Symbol:	Ppfia1
Vector:	pCMV6-Entry (PS100001)
E. coli Selection:	Kanamycin (25 ug/mL)
Cell Selection:	Neomycin
ORF Nucleotide Sequence:	>RR210272 representing NM_001106320 Red=Cloning site Blue=ORF Green=Tags(s)

TTTTGTAATACGACTCACTATAGGGCGGCCGGAATTCGTCGACTGGATCCGGTACCGAGGAGATCTGCC  
GCCCGATCGCC

ATGATGTGCGAGGTGATGCCGACCATTAGTGAAGCGGAAGGACCCCGAGGAGGTGGGAGCCATGGGT  
CAGGCTCCCCTTCCCAGCCAGACGCTGATTCGCATTTTGAGCAGCTCATGGTTTCCATGCTGGAAGAGCG  
AGACCGCCTTCTGGACACACTGAGAGAGACACAAGAAACGCTGGCATTAAACCCAGGGAAAGTTGCATGAA  
GTTGGTCATGAAAGAGATTCTTTGAGAGGAGCTCAACTGCACTTCCACAGGAGTTTCTGCACTCA  
CGAAGGAACTCAATGTGTGTCGGGAGCAGCTTCTGGAGAGAGAGGAAATGCTGAGCTGAAGGCAGA  
GAGGAACAACACTAGGCTGCTGTTGGAGCACCTAGAGTGCCTTGTCTCCAGGCACGAGCGCTCTCTACGT  
ATGACAGTGGTGAAGAGGCAGGCACAGTACCTGCGGGCGTGTCCAGTGAGGTGGAGTTTCTGAAAGCCC  
TGAAGTCACTGTTTGAAGAGGAGCTAGGTGCCACCCACAAGAGCTAATGATTCTTAAAGAACAGAAC  
AGTCAGAAGAAAGCACTAACAGAGGGAATGCTTGTGGAACACGAACAGGAAAATGCACCGAGCACCA  
ACGGCAAGAGATCTTCCGATGGCTCCTTGAGCCATGAGGATCTTGCCAAAGTGTGGAGCTGCAGGAAGT  
CATAGACAGGCAGGCTCGAGAGCAGAGCCAGATGAAGGAGCGCCTGGCCTCCCTGTCCAGTCATGCAGCA  
GAGCTGGAAGAGGATCTGGACACAGCTAGAAAAGACCTCATCAAGTCTGAAGAGATGAATACGAAATGC  
AGCGAGAAGTCCGAGAAGCAATGGCCCAGAAGGAGGATATGGAGGAGAGAATCACCACCCTTGAGAAAACG  
CTACCTCGCCGCACAGCGTGAAGCCACGCTGTGCATGACCTCAATGACAACTTGAATGAAATGCA  
AATAAAGACTCCATGCACCGACAGACAGAGGACAAGAACCAGTTCGCAAGAAGCTGGAATGGCAG  
AGCAGAAGCTGCAGCAGACCCCTGCGCAAAGCTGAGACGCTGCCAGAGGTGGAGGCTGAGCTGGCCAGAG  
GGTGGCTGCACCTCCAAGGCTGAGGAGAGACATGGCAACATTGAAGAGAGGCTGCGGCAGATGGAGGCA  
CAGCTGGAGGAGAAGAATCAGGAGCTGCAGCGGCAAGACAGAGAGAAAAGATGAATGAGGAACATAATA  
AGCGCCTGTCTGACACTGTGGACAAGTTGCTCTCAGAATCCAATGAGAGGCTGCAGCTGCATCTGAAGGA  
GAGAATGGCGGCGCTGGAGGACAAGAATCTCTGCTAAGGGAAGTTGAAAATGCAAGAAGCAACTAGAA  
GAGACCCAGCATGATAAGGACCACTTGTCTTGAATATTGAAGCCCTGAAGGCTGAGCTGGAGCAGATGA  
GACTGAGAGGTTCTTCACTTCATCATGGCCGACCCATTTGGGCAGTGTCCCGGACTTCAGGTTCTCTGT  
GGCAGACGGGCATGTGGATGCTTACAGCACCAGTGCAGTGTGCGGCGCCCCAGAAGGGCCGCTGGCA



[View online »](#)

GCGCTGCGGGACGAGCCCTCCAAGGTGCAGACCCTCAATGAACAGGACTGGGAACGGGCCCAACAAGCCA  
 GCGTCTTGGCAAATGTGGCACAGGCATTTGAGAGTGATGTGGATGTGTCTGATGGTGAAGATGACCGAGA  
 CACTCTGCTCAGCTCAGTTGATCTGCTGTACCCAGTGGGCAAGCTGATGCCAGACCCTGGCCATGATG  
 CTTTCAGGAACAGCTGGATGCGATCAACAAAAGAGATCAGACTGATCCAAGAAGAGAAGGAGAATACAGAGC  
 AGCGGGCAGAGGAGATCGAGAGCAGAGTGGGCAGTGGAAAGCTTGGACAATCTTGGTCGTTTTAGATCAAT  
 GAGCTCCATACCCCCCTACCTGCTTCTCGCTTGCCGGCTCCTCTCCTCCAGGCAGTGGTGGTCCACA  
 CCGAGAAGGGTCCCTCACAGTCTGCCGGGAGGTGGACAGGCTGGGTGTCATGACTCTGTGCCAGCTT  
 CCAGAGAAGAGGTACGAGACGACAAGACGACGATAAAATGTGAAACCTCCCCCATCTCCCCAAGGCC  
 TCTGCGCTTAGACAGGCTGCACAAGGTCGCTGCACACGGTCAGCCATGAGGACATCAGGGATCTGAGG  
 AACTCCACAGGCTCCCAGGATGGTCCCCTGAGCAACCCTAGCAGCAGCAATAGTAGCCAGGACTCCCTCC  
 ACAAGGCCCAAGAAGAAGGGCATCAAATCCTCCATTGGCCGCTTATTTGGGAAGAAGGAAAAGGGCCG  
 GCCTGGTCCGCTGGGCAAGGAGTACCAGGGCAAGCTGGTGTTCAGAGACAGAAAATTCATCTCAAGAT  
 GCCTTGGGACTCAGCAAACTGGGAGGGCAAGCTGAGAAAAACCGAAAACCTCAGAAAAAGCATGAGCTGC  
 TGGAGGAGCCCGCAGGCAAGGCTTGCCTTTCGCACAGTGGGATGGGCCAACTGTGGTGGTGGCTAGA  
 GCTCTGGGTTGGGATGCCTGCCTGGTATGTGGCTGCTTCCGAGCAAACGTCAAGAGTGGTCCATTATG  
 TCAGCCCTGTGAGACACTGAGATCCAGCGGGAGATTGGCATCAGCAACCCCTTGCACAGGCTGAAGCTGC  
 GGCTGGCTATCCAAGAGATAATGCTACTGACTAGCCCTTCTGCTCCACCCACATCTAGGACGACGCTAGC  
 ATATGGGGACATGAACCACGAGTGGATTGGCAACGAGTGGCTGCCAGCTTGGGCCCTGCCGAGTACCGC  
 AGCTACTTTCATGGAGTGCCTTGTGATGCCCGGATGCTGGATCACCTGACCAAGAAAGACCTTCGAGGGC  
 AGCTGAAGATGGTCGACAGCTCCATAGAAACAGTTTCCAGTGTGGAATTATGTGCTGAGAAGGTTGAA  
 TTATGATCGAAAAGAAGTGGAAAGAAAACGAGAAGAGAGTCAGAATGAGACAAGAGATGTGCTTGTTTGG  
 AGCAATGATCGGGTATTGCTGGATCCTGTGATCGGCTTAAAGAGTTTGGCAACAACCTAATAGAGA  
 GCGGTGTTACGGCCACTTCTGGCTTGGACGAGAGCTTCGATTTACGCGCCCTGGCAGCTTTGTGTACA  
 GATTCCAACACAGAATACACAGGCTCGCGCTGTCTTGGAAAGAGAATTCAACAACCTTTTGGTCACCGGG  
 ACTGATCGGAGGTTTGTGAGGATGATGACAAAAGCTTCAAGGAGGCACCTTCTGGAGGAAGAAGTTCA  
 GACCAAGGACATCCGTGGCTTGGCTTCTGGCTCTGCAGAGAGCTTGCCTGCCAACTTCCGGGTACCTC  
 CTCTATGTCATCTCCCTCTATGCAGCCAAAGAAGGTTTCAGATGGACGTTTACCCACTACTTCTACAGA

ACGCGTACGCGGCCGCTCGAGCAGAACTCATCTCAGAAGAGGATCTGGCAGCAAATGATATCTGGATT  
 ACAAGGATGACGACGATAAGGTTTAA

**Protein Sequence:**

>RR210272 representing NM\_001106320  
 Red=Cloning site Green=Tags(s)

MMCEVMPTISEAEGPPGGGGSHSGSPSQPDADSHFEQLMVSMLEERDRLDLETLRETQETLALTQGKLHE  
 VGHERDSLQRLNTALPQEFALTKELNVCREQLLEREEIEAELKAERNNTRLLLEHLECLVSRHERSLR  
 MTVVKRAQSPAGVSSEVEVLKALKSLFEHKKALDEKVRERLRVALERCSLLEELGATHKELMILKEQN  
 SQKKALTEGMLDGNHEQENAPSTNGKRSSDGLSHEDLAKVLELQEVDRQAREQSOMKERLASLSSHAA  
 ELEEDLDTARKDLIKSEEMNTKLQREVREAMAQKEDMEERITTLKRYLAAQREATSVHDLNDKLENEIA  
 NKDSMHRQTEDKNRQLQERLELAEQKLQQLRKAETLPEVEAELAQVAALSKAERHNGNIEERLRQMEA  
 QLEEKQELQARQREKMNEEHKRLSDTVDKLLSESNERLQLHLKERMALEDKNSLLREVENAKKQLE  
 ETQHDKDQLVNLIEALKAELQMLRGLSSHHGRPHLGSVDPFRFSVADGHVDAYSTAVLRRPQKGRLA  
 ALRDEPSKVQTLNEQDWERAQASVLANVAQAFESDQVSDGEDDRDRLSSVDLLSPSGQADAQTLAMM  
 LQEQLDAINKEIRLIQEEKENTEQRAEEIESRVGSGSLDNLGRFRSMSSIPPYPASSLAGSPPGSGRST  
 PRRVPHSPAREVDRLGVMTLLPASREEVRDDKTTIKCETSPSPSRPLRLDRLHKALHTVSHEDIRDRL  
 NSTGSDGPPVSNPSSNSQDSLHKAPKKGKIKSSIIRLFGKKEKGRPGPLGKESPGQAGVSETENSSQD  
 ALGLSKLGGQAEKNRKLQKKHELLEEARQGLPFAQWDGPTVVVWLELWVGMPAWYVAACRANVKSAGAIM  
 SALSDTEIQREIGISNPLHRLKLRLLAIQEIIMSLTSPSAPPTSRRTLAYGDMNHEWIGNEWLPGLPQYR  
 SYFMECLVDARMLDHLTKKDLRGQLKMGVDSFHRNSFCQIMCLRRLNYDRKELERKREESQNETRDVLVW  
 SNDRVIRWILSIGLKEFANLIESGVHALLALDETFDFLALLLQIPTQNTQARAVLEREFNLLVTG  
 TDRRFDEDDKSFRRAPSWRKKFRPKDIRGLASGSAETLPANFRVTSSMSSPSMQPKVQMDVYPHYFYR

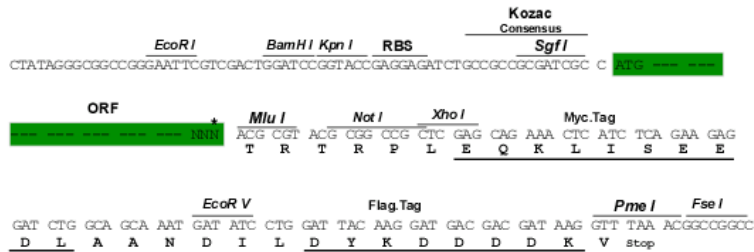
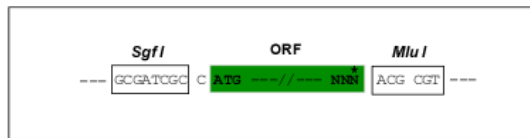
TRTRPLEQKLISEEDLAANDILDYKDDDDKV

Restriction Sites:

Sgfl-MluI

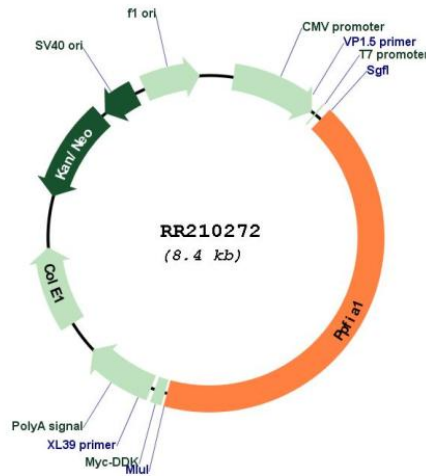
Cloning Scheme:

Cloning sites used for ORF Shuttling:



\* The last codon before the Stop codon of the ORF

Plasmid Map:



ACCN: NM\_001106320

ORF Size: 3570 bp

OTI Disclaimer: The molecular sequence of this clone aligns with the gene accession number as a point of reference only. However, individual transcript sequences of the same gene can differ through naturally occurring variations (e.g. polymorphisms), each with its own valid existence. This clone is substantially in agreement with the reference, but a complete review of all prevailing variants is recommended prior to use. [More info](#)

OTI Annotation: This clone was engineered to express the complete ORF with an expression tag. Expression varies depending on the nature of the gene.

Components: The ORF clone is ion-exchange column purified and shipped in a 2D barcoded Matrix tube containing 10ug of transfection-ready, dried plasmid DNA (reconstitute with 100 ul of water).

Reconstitution Method:

1. Centrifuge at 5,000xg for 5min.
2. Carefully open the tube and add 100ul of sterile water to dissolve the DNA.
3. Close the tube and incubate for 10 minutes at room temperature.
4. Briefly vortex the tube and then do a quick spin (less than 5000xg) to concentrate the liquid at the bottom.
5. Store the suspended plasmid at -20°C. The DNA is stable for at least one year from date of shipping when stored at -20°C.

RefSeq: [NM\\_001106320.2](#), [NP\\_001099790.2](#)

RefSeq Size: 4789 bp

RefSeq ORF: 3573 bp

Locus ID: 293645

Cytogenetics: 1q42

MW: 134.6 kDa