

Product datasheet for **RR210226**

Vav2 (NM_001106563) Rat Tagged ORF Clone

Product data:

Product Type:	Expression Plasmids
Product Name:	Vav2 (NM_001106563) Rat Tagged ORF Clone
Tag:	Myc-DDK
Symbol:	Vav2
Vector:	pCMV6-Entry (PS100001)
E. coli Selection:	Kanamycin (25 ug/mL)
Cell Selection:	Neomycin



[View online »](#)

ORF Nucleotide Sequence:

>RR210226 representing NM_001106563
 Red=Cloning site Blue=ORF Green=Tags(s)

TTTTGTAATACGACTCACTATAGGGCGGCCGGAATTCGTCGACTGGATCCGGTACCGAGGAGATCTGCC
 GCC**CGCATCGCC**

ATGGAGCAGTGGCGGCAATGCGGCCGCTGGCTCATTGACTGCAAGTCTGCCGCCAACACCACCGCTCG
 TGTGGCCCTCGGCGGTGGTCTTCGACCTGGCGCAGGCGCTGCGCGACGGGTCCTTCTGTGCCAGCTGCT
 GCACAACCTCTCCCCGCTCCATCGACCTTAAGGACATCAACTTCCGGCCGAGATGTCCAGTTCCTG
 TGTCTGAAGAATATTCGCACCTTCTCAAAGTCTGCCACGACAAATTTGGACTAAGGAACAGTGAGCTGT
 TTGACCTTTTCGACCTCTTTGATGTCCGAGACTTCGGGAAGTTCATCTCTGCCGTGTCCCGTCTGTCCCT
 GCACAGCATCGCGCAGAGCAAAGGGATCAGGCCTTTCCATCAGAGGAGACGGCTGAAAACGATGACGAT
 GTCTACCGGAGTCTGGAAGAGCTGGCTGACGAGCATGACCTGGGTGAGGACATCTACGACTGTGTCCCGT
 GTGAAGATGAAGGAGATGACATTTATGAGGACATCATCAAGGTGGAGGTGCAGCAGCCCATGAAAATGGG
 ACTAACCGAGGACGACAAGAGGAGCTGCTGCTTGTAGAGATTACAGGAGCCGAGGCCAAGTACTACCGC
 ACCTTGAGGACATTGAGAAGAACTACATGGGTCCCTTGGCGCAGGTGCTGAGCCCCGTGGACATGGCCA
 CCATCTTCATCAACCTGGAGGACCTCATCAAGGTGCACCACAGCTTTCTGCGAGCCATCGATGTGTCCAT
 GATGGCTGGTGGCAGTACCCTGGCTAAGGTCTTCTGGAGTTAAGGAACGGCTCCTGATCTACGGAGAG
 TACTGTAGCCACATGGAGCATGCGCAGAGCGCACTGAACCAGCTCCTCGCCAGCCGAGACGACTTACGGC
 AGAAAGTGGAGGAGTGCACACTCAAGGTCCAGGAGGGCAAGTTCAGCTGCAGGATCTGTGGTGGTGCC
 CATGCAGCGGGTCTCAAGTACCACCTGTTGCTCAAGGAGCTCCTGAGCCATTCGCAGACCCGCGCTGAA
 AGACAACAGCTCAAAGAAGCACTGGAAGCCATGCAGGACTTGGCCATGTATTAATGAAGTGAACCGGG
 ACAAGGAGACTTGAAGAAGATTAGTGAGTTCAGTGTCCATAGAAAACCTGCAAGTGAAGTGGAGGA
 ATTTGGGAGGCCGAAGATTGACGGGAGCTGAAAGTTCGGTCCATAGTCAACCACCAAGCAAGACAGG
 TACCTGTTCTGTTTGACAAGGTGGTTCATCGTGTGAAGAGGAAGGGCTACAGCTATGAGCTGAAGGAGG
 TTATTGAACTGCTCTCCACAAGATGACTGATGACCCCATGCACAACAAAGACATCAAGAAGTGGTCCCTA
 TGGCTTCTACCTGATTACCTCCAAGGGAAGCAAGGCTTTCAGTCTTCTGCAAGACGGAAGACATGAAA
 CGGAAGTGGATGGAGCAGTTCGAGATGGCCATGTCAAACATCAAGCCAGACAAGGCCAATGCCAACCATC
 ATAGTTTCCAGATGTACACGTTTGACAAGACCACCAACTGCAAAGCCTGCAAGATGTTTCTCAGGGGTAC
 CTTCTACCAGGGATACCTGTGTACCAGATGTGGTGTGCGGGCACACAAGGAGTGCCTGGAGGTGATACCC
 CCCTGCAAGATGAGTTCGCTGCAGATGCGGACGCTCCCGGAGCAGGACTAGGTCCCAAGATGGTTGCCG
 TGCAGAATTACCATGGTAACCCAGCCCCCTCCCGGAAGCCCGTGTGACCTTCCAGACAGGGGATGTGAT
 AGAGCTGTCCGGGGTGACCCCGATTCTCCTTGGTGGGAGGGGAGGCTGGTTCAAACCTCGGAAGTCAGGG
 TATTTCCCGACTCATCTGTGAAGCCCTGCCCGGTGGACGGAAGGCCGCCTGTTGGCCGCCCGCCATCCC
 GGGAGATCGATTACACTGCATACCCGTGGTTCGCTGGCAACATGGAACGGCAGCAGACGGACAATCTACT
 CAAGTCTCATGCCAGCGGGACCTACCTCATCAGAGAGCGCCAGCAGAGGCAGAGCGTTCGCCATCAGC
 ATCAAGTTCATGATGAAGTGAACACATCAAGGTGGTGGAAAAAGACAGCTGGATCCACATCACGGGAAG
 CTAAGAAGTTTGAGAGCCTCCTGGAGCTGGTGGAGTACTACCAGTGCCACTCACTTAAGGAGAGCTTCAA
 GCAGTTAGACACTACACTCAAGTTCCTTACAAGTCTCGGGAGCGCGCCGCCACCAGGGCCTCAAGCCGA
 TCTCCAGCTTCGTGTGCTTCTACAGCTTTTCTTTTCTCAGTCCAGGGCCTCAGCTTTGCCCCCAAGG
 GCCCTCTGCTCCCTTCTGGTCAAGTGTTCACACCGCGGTTCATCGGCACAGCCGTGGCCAGGTACAACCT
 TGCTGCACGAGACATGCGGGAGCTGTGCTGCGGGAAGGTGATGTGGTGAAGATCTACAGCCGGATCGGT
 GGGGACCAGGGCTGGTGAAGGGCGAGACGAACGGGCGGATCGGTTGGTTTCTTCGACGTACGTGGAAG
 AGGAAGGCATCCAG

ACCGGTACGCGGCCGCTCGAGCAGAACTCATCTCAGAAGAGGATCTGGCAGCAATGATATCCTGGATT
 ACAAGGATGACGACGATAAGGTTTAA

Protein Sequence: >RR210226 representing NM_001106563
Red=Cloning site Green=Tags(s)

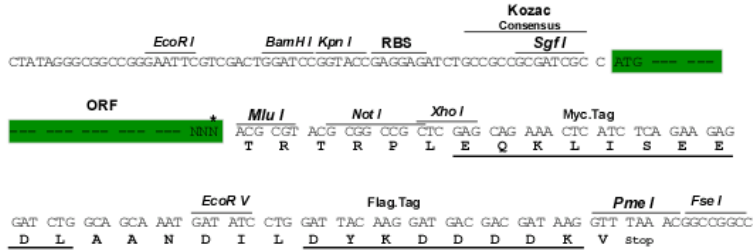
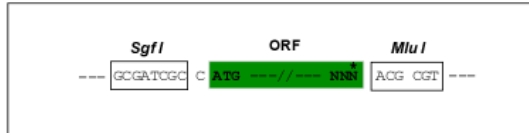
MEQWRQCGRWLDCKVLPPNHRVVWPSAVVFDLAQALRDGVLLCQLLHNLSPGSIDLKDINFRPQMSQFL
CLKNIRTFKLVCHDKFGLRNSELPDFDLFDVRDFGKVISAVSRLSLHSLAQSKGIRPFSEETAENDDD
VYRSLEELADEHDLGEDIYDCVPCDEGDDIYEDIKVEVQQPMKMGLTEDDKRSCCLLEIQETEAKYYR
TLEDIEKNYMGPLRQVLSVDMATIFINLEDLIKVHHSFLRAIDVSMAGGSTLAKVFLEFKERLLIYGE
YCSHMEHAQSALNQLLASRDDFRQKVEECTLKVQEGKFKLQDLLVPMQVRVLYHLLKELLSHSADRPE
RQQLKEALEAMQDLAMYINEVKRDKETLKKISEFQCSIENLQVKLEEFGRPKIDGELKVRISIVNHTKQDR
YLFLFDKVVIVCKRKGYSYELKEVIELLFHKMTDDPMHNKDIKKWSYGFYLIHLQKGQGFQFFCKTEDMK
RKWMEQFEMAMSNIKPDKANANHHSFQMYTFDKTTNCKACKMFLRGTFYQGYLCTRCGVGAHKECLEVIP
PCKMSSPADADAPGAGLGPKMVAVQNYHGNPAPPKPVLTFTGDVIELLRGDPDPPWEGRLVQTRKSG
YFPSSSVKPCPVDGRPPVGRPPSREIDYATYPWFAGNMRQQTDLNLLKSHASGYLIRERPAAEAERFAIS
IKFNDEVKHIKVEKDSWIHITEAKKFESLLELVEYYQCHSLKESFKQLDITLKFYKSRERAATRASSR
SPASCASYSFSLSPQGLSFAPQGPSAPFWSVFTPRVIGTAVARYNFAARDMRELSLREGDVVKIYSRIG
GDQGWKGETNGRIGWFPSTYVEEEGIQ

TRTRPLEQKLISEEDLAANDILDYKDDDDKV

Restriction Sites: Sgfl-Mlul

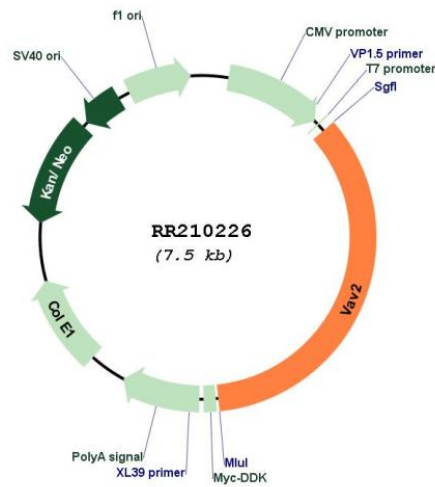
Cloning Scheme:

Cloning sites used for ORF Shuttling:



* The last codon before the Stop codon of the ORF

Plasmid Map:



ACCN:	NM_001106563
ORF Size:	2604 bp
OTI Disclaimer:	The molecular sequence of this clone aligns with the gene accession number as a point of reference only. However, individual transcript sequences of the same gene can differ through naturally occurring variations (e.g. polymorphisms), each with its own valid existence. This clone is substantially in agreement with the reference, but a complete review of all prevailing variants is recommended prior to use. More info
OTI Annotation:	This clone was engineered to express the complete ORF with an expression tag. Expression varies depending on the nature of the gene.
Components:	The ORF clone is ion-exchange column purified and shipped in a 2D barcoded Matrix tube containing 10ug of transfection-ready, dried plasmid DNA (reconstitute with 100 ul of water).
Reconstitution Method:	<ol style="list-style-type: none">1. Centrifuge at 5,000xg for 5min.2. Carefully open the tube and add 100ul of sterile water to dissolve the DNA.3. Close the tube and incubate for 10 minutes at room temperature.4. Briefly vortex the tube and then do a quick spin (less than 5000xg) to concentrate the liquid at the bottom.5. Store the suspended plasmid at -20°C. The DNA is stable for at least one year from date of shipping when stored at -20°C.
RefSeq:	NM_001106563.2 , NP_001100033.2
RefSeq Size:	5164 bp
RefSeq ORF:	2607 bp
Locus ID:	296603
Cytogenetics:	3p12
MW:	99.8 kDa