

Product datasheet for **RR210214**

Srm (NM_053464) Rat Tagged ORF Clone

Product data:

Product Type: Expression Plasmids
Product Name: Srm (NM_053464) Rat Tagged ORF Clone
Tag: Myc-DDK
Symbol: Srm
Vector: pCMV6-Entry (PS100001)
E. coli Selection: Kanamycin (25 ug/mL)
Cell Selection: Neomycin
ORF Nucleotide Sequence: >RR210214 representing NM_053464
Red=Cloning site Blue=ORF Green=Tags(s)

TTTTGTAATACGACTCACTATAGGGCGGCCGGAATTCGTCGACTGGATCCGGTACCGAGGAGATCTGCC
GCC**CGATCGCC**

ATGGAGCCTGGCCCCACGGCCAGCCGCGCCCGCCCGCCATCCGTGAGGGTTGGTCCGAGAGA
CCTGCAGCCTGTGGCCTGGCCAGGCCCTGTCGCTGCAAGTGGAGCAGCTGCTGCACCACCGGCCTCGCG
GTACCAAGACATCCTCGTCTCCGAGTAAAACCTACGGCAACGTGCTGGTTCTGGATGGCGTCATCCAG
TGTACCGAGAGGGACGAGTTCTCCTACCAGGAGATGATAGCCAACCTGCCGCTCTGCAGCCACCCCAACC
CGCGGAAGGTGCTGATCATCGGGGTGGAGATGGGGCGTCTACGGGAAGTGGTGAAGCACCCCTCTGT
GGAGTCTGTGGTCCAGTGCAGATCGATGAGGATGTCATTGAGGTCTCTAAGAAGTTCCTGCCTGGCATG
GCCGTTGGCTACTCCAGCTCAAAGCTGACTCTCCACGTGGGCGATGGCTTTGAGTTCATGAAGCAGAACC
AAGATGCCTTTGATGTCATCATCACCAGCTCCTCAGACCCATGGGCCCTGCTGAGAGCCTCTCAAGGA
GTCCTATTACCAGCTCATGAAGACAGCCCTCAAAGAAGATGGCATCCTCTGTTGCCAGGGCGAGTGCCAG
TGGCTGCACCTGGACCTCATCAAGGAGATGAGGCATTTCTGCAAGTCTCTTCCCTGTGGTGAAGTATG
CCTACTGTACCATTCCCACCTATCCCAGTGGCCAGATCGGCTTCATGCTGTGTAGCAAAAACCCGAGCAC
CAACTTCCGGGAGCCCGTGCAGCAGCTGACACAGGCCAGGTAGAGCAGATGCAGCTGAAGTACTATAAC
TCAGACATGCACCGCGCCGCTTCGTGCTGCCAGAGTTCACCCGAAAGGCCCTGAATGACATAAGC

ACGCGTACGCGGCCGCTCGAGCAGAACTCATCTCAGAAGAGGATCTGGCAGCAATGATATCCTGGATT
ACAAGGATGACGACGATAAGGTTTAA



[View online »](#)

Protein Sequence: >RR210214 representing NM_053464
 Red=Cloning site Green=Tags(s)

MEPGPDGPAAPGPAAIREGWFRETCSLWPGQALSLQVEQLLHRRSRVYQDILVFRSKTYGNVLVLDGVIQ
 CTERDEFSYQEMIANLPLCSHPNPRKVLIIIGGGDGGVLRVVKHPSVSVVQCEIDEDVIEVSKKFLPGM
 AVGYSSSKLTLHVGDGFEFMKQNQDAFDVITDSSDPMGPAESLFKESYYQLMKTALKEDGILCCQGECC
 WLHLDLIKEMRHFCSLFPVVSAYACTIPTYPSGQIGFMLCSKNPSTNFREPQQLTQAQVEQMLKYNN
 SDMHRAAFVLPFTRKALNDIS

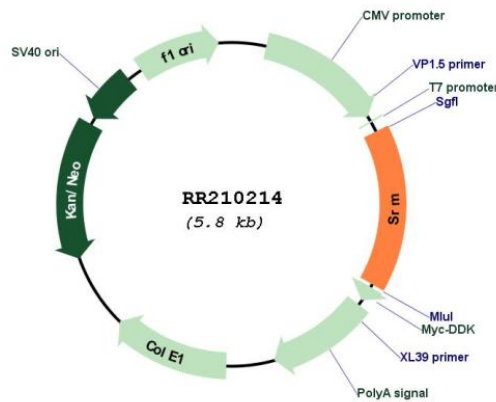
TRTRPLEQKLISEEDLAANDILDYKDDDDKV

Restriction Sites: SgfI-MluI

Cloning Scheme:



Plasmid Map:



ACCN: NM_053464

ORF Size:	906 bp
OTI Disclaimer:	The molecular sequence of this clone aligns with the gene accession number as a point of reference only. However, individual transcript sequences of the same gene can differ through naturally occurring variations (e.g. polymorphisms), each with its own valid existence. This clone is substantially in agreement with the reference, but a complete review of all prevailing variants is recommended prior to use. More info
OTI Annotation:	This clone was engineered to express the complete ORF with an expression tag. Expression varies depending on the nature of the gene.
Components:	The ORF clone is ion-exchange column purified and shipped in a 2D barcoded Matrix tube containing 10ug of transfection-ready, dried plasmid DNA (reconstitute with 100 ul of water).
Reconstitution Method:	<ol style="list-style-type: none">1. Centrifuge at 5,000xg for 5min.2. Carefully open the tube and add 100ul of sterile water to dissolve the DNA.3. Close the tube and incubate for 10 minutes at room temperature.4. Briefly vortex the tube and then do a quick spin (less than 5000xg) to concentrate the liquid at the bottom.5. Store the suspended plasmid at -20°C. The DNA is stable for at least one year from date of shipping when stored at -20°C.
RefSeq:	NM_053464.2 , NP_445916.1
RefSeq Size:	1265 bp
RefSeq ORF:	909 bp
Locus ID:	84596
Cytogenetics:	5q36
MW:	34 kDa
Gene Summary:	human homolog catalyzes the conversion of S-adenosylmethioninamine and putrescine to 5'-methylthioadenosine and spermidine [RGD, Feb 2006]