

Product datasheet for **RR210181**

Dlgap5 (NM_001135802) Rat Tagged ORF Clone

Product data:

Product Type:	Expression Plasmids
Product Name:	Dlgap5 (NM_001135802) Rat Tagged ORF Clone
Tag:	Myc-DDK
Symbol:	Dlgap5
Synonyms:	Dlg7
Mammalian Cell Selection:	Neomycin
Vector:	pCMV6-Entry (PS100001)
E. coli Selection:	Kanamycin (25 ug/mL)



[View online »](#)

ORF Nucleotide Sequence:

>RR210181 representing NM_001135802
 Red=Cloning site Blue=ORF Green=Tags(s)

TTTTGTAATACGACTCACTATAGGGCGGCCGGGAATTCGTCGACTGGATCCGGTACCGAGGAGATCTGCC
 GCC**CGGATCGCC**

ATGCCGGTGTACGGTTTGTGGTTCGGCTTCGGAAGATTCGAGCATCGAGATGATTAGGACTAGCTTGG
 CTCACAGGAAGTCGCTGTCTCAGAAGGAAAACAGGCACCGGGTGTATGAGCGAAACAGACTTTGGTTT
 GAGGGACGTCAACGTCCCACTGGAAGGTAGAGACCTTGTTAATATACATGAGATGTCTCAAGACCTCACT
 CTAGAAAATGCCAGCTCCAAAACAAAGTCAGTGAAAATGGTTCTGAGTGACCAACGGAAGCAGCTCCTCC
 AGAAAATACAAAGAAGAGAAGCAGCTTCAGAAATGAAAGAACAGCGAGAGAAAGCCAAAGTGTTCAAAGT
 GGGTCTCTACAGGCTGCCGCACCCGGCTTTCTTGTGCGAGACCAGAGGGGTGTGAAAGCTGAGCCAAA
 AAGGCTTTTCCATATACTGGGCGGATTACAAGATCAAAGGCCAGAGCCATATGGAACAGAGTAAGACTG
 GGAGCAGGAATATCCCTCAGGCAGCTCAATTCGGCCAAAGACAAATTTCTGAAAAAAACCATTAGACAG
 AGAGAAAAAAGTTATGCAGCCCATGGGTCCCACATCAGGGAAAGCGGCTGGATCAGTGGCAGCTACTCAG
 AGGGCCAAAGCAGATGGCTGGAACAGTGCCATCTACCACAAGAAAGCCAGTCACAAGAGCCACCAATGAGA
 ACGGATCAGAAAAGAGGGGACCAAGTAGAGGGAGACCTGCCGAAAAGCAGAAGGCGAGCTGGACAAGAT
 CATTTCTTCCCAAGGCATTGCATTGGGAAGTGAAGAGAAGCATTTGCAGTCGAGAGCAGTGTGACAAAAC
 GAAGTGAAAAGCTTGCAAGGAGACAGTGCCTCGAAAAGGGAGAGAGAGGGAGTCTTCCGCCCTGAGCGCT
 GTGCCTTTTCCAGCCCCACGTGGTCTGAAGACCTACCAAGTGGCTCCCCTGAGTCCCAGAAGTGCACACGC
 TTTCTGACGCCAGTTGTGACTGGAACATTTAAGACCAGAAGTTGCCACAGCTCAAGACACAGCAAAT
 GAAGTCTTGGTACAGCAAGAATCAAATAAATCACAATTTGGTTTGGATTACAAAACAGACTTAGGAAAAG
 AACGTGGCTTAAATCAGAAGGACGCGTACACCAAATTCAGATCACCTTTTCAGTGAAAGGAATCACATC
 ATCTGAAGCAGGTGACGGTCAGACGGGTACGCCGACGACGACGTGCCGTATTTTCAGAAAAATTCCTCAA
 TCAGAAAATGACAGACTAAACTCACACTGCCTAGACTGGGAGAAGAAGCTAGAACTGGACATTCCCGATG
 ATGCTAAAGATCTTATCCGGACAGCGTTGGTCAAACAAGACTCCTTATCATGGAGAGATTGAGACAGTT
 CGAAGGACTGGTGATAATTGTGAATATAAACGCGGGGAAAAGGAGACCACCTGTACAGATCTGGATGGA
 TTCTGGGATATGGTTAGTTTTCAGGTCGATGATGTAACCCAAAAGTTCAACAACCTGATGAAACTCGAGG
 AGTCTGGATGAAAAGACAACAATAATCCAAGCAAAAAGTCCCGGAAAAAATTTGCTGCTGGTAAAAC
 AAGCAAAGCAAAGCAGGACGAAGACGGACGAACGGCAGCTAGGAGTCGCTCGCCGCCATAAAGAACGCA
 ATGAAAGACCGGCTGCGGCAGGAAGCACAAGCCAGGCTGCAGTTCAGAGATACCAACGGCAGCTGACA
 AAATAGTGTGTTGATGCTGGGTTCTTCAAGATCGAGAGTCTGTTAAGTCGTTCTCAGTCCCTGCTCCTGA
 ACGTCTGTTCTCAATTCGGAGCACACGTGTCTGCCAGCAGAGCTGTGCCTGAGGGCAGGGCTGCAGGGGAC
 CTTCTCAGACAGAAGACGCCACTGAAGAGGCCTGACCCGACAGCAGCAGCAGTGCAGCATGTTGATCGGA
 CGTTTTTCAGATGGACTTGAAAGCAGGTGCAGCCAAAGTAGAAGACATCCTGTGTCCCGTACAGCAAGATTC
 AAGTGACGTAGAGCGTGTGTAATAAGATAAAGGTCAAAATGGAGAGTTTTTCTGTTGCGACAATGAAT
 TTGCCTTCTCTGCTGGTGAAGTGGCCGGCGATGCTAATAGTAACCAAAAAGGACGCAGTCTCGGCTGCAG
 CCGTGGAAGGAGTGGGCTCTGCAGTCTCTCCAGGATGTGCTGATGAGTACCCTGAGACAAATGCCTT
 CTCACAGCGTACTCCTTACAAGAAGGAGCTGAGCTGTCCAGTCAGTACTGCTACATAAAAGTCTCATC
 TCTGAATGCCATCTTCTGGTCCACCTGACCTCAGCTGACCCAGCCCTGCACTCGAGAGGACACCAGAC
 AGCAAGATCGAGGCCACAGTTCTCTTTGGCGGTAACCTCATCGTCTTCTACCCTAAGACCC

AG**CGGACCG**ACGCGTACGCGGCCGCTCGAGCAGAAACTCATCTCAGAAGAGGATCTGGCAGCAAATGATATCC
 TGGATTACAAGGATGACGACGATAAGGTTTAA

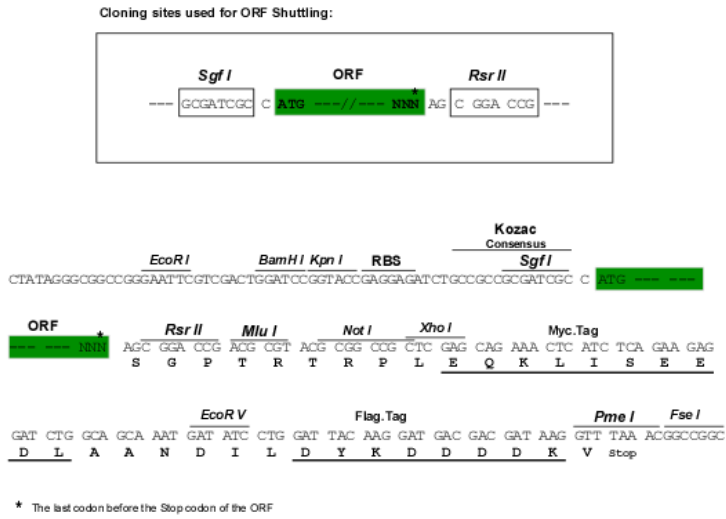
Protein Sequence: >RR210181 representing NM_001135802
Red=Cloning site Green=Tags(s)

MPVSRFAGRLRKDSSSIEMIRTSLAHRKSLSQKENRHRVYERNRHFGLRDVNVPLEGRDLVNIHEMSQDLT
LENASSKTKSVKMVLSQQRKQLLQKYKEEKQLQKLKEQREKAKVFKVGLYRPAAPGFLVADQRGVKAEPQ
KAFPYTGRITRSKARDHMEQSKTGSRNIPQAAQFGQRQISEKKPLDREKKVMQPMGPTSGKAAGSVAATQ
RAKQMAGTVPSTTRKPVTRATNENGSERRGSPSRGRPAGKAEGELDKIISQGIALGSEEKHLQSQSSVTN
EVESLQETVPAKGRERESFAPERCAFQPPRGLKTYQVAPLSPRSANAFLLTPSCDWNHLRPEVATAQDTAN
EVLVQQESNKSQFGLDSQTDNRKERGLNQQDASTPNSDHL SVKGITSSSEAGDGQTGQPQHDVPYFRKILQ
SETDRLNSHCLDWEKKLELDIPDDAKDLIRTAVGQTRLLIMERFRQFEGLVDNCEYKRGEKETTCTDLDG
FWDVMSFQVDDVTQKFNNLMKLEESGWKDNPNPSKKVIRKKIVPGKTSKAKQDEDGRTAARSRLAAIKNA
MKDRLRQEAQAQAAVPEIPTAADKIVFDAGFFRIESPVKFSVLSSERRSQFGAHVSASRAVPEGRAAGD
LLRQKTPLKRPDPQSSTIEHVDRTFSDGLESRCSQVEDILCPVQQDSSDVERDVNKKIKVMESFSVATMN
LPLPAGEVAGDANSNQDAVSAAAVEGVGSAVLSQDVLMSHPETNAFSQRDSLQEGAELSQSVLLHKSLT
SECHLLGPPDL SCTSPCTREDTRQQDRGRQFSFGGNLIVFSPLRP

SGPTRTRPLEQKLI SEEDLAANDILDYKDDDDKV

Restriction Sites: SgfI-RsrII

Cloning Scheme:



ACCN: NM_001135802

ORF Size: 2445 bp

OTI Disclaimer: The molecular sequence of this clone aligns with the gene accession number as a point of reference only. However, individual transcript sequences of the same gene can differ through naturally occurring variations (e.g. polymorphisms), each with its own valid existence. This clone is substantially in agreement with the reference, but a complete review of all prevailing variants is recommended prior to use. [More info](#)

OTI Annotation: This clone was engineered to express the complete ORF with an expression tag. Expression varies depending on the nature of the gene.

Components: The ORF clone is ion-exchange column purified and shipped in a 2D barcoded Matrix tube containing 10ug of transfection-ready, dried plasmid DNA (reconstitute with 100 ul of water).

Reconstitution Method:

1. Centrifuge at 5,000xg for 5min.
2. Carefully open the tube and add 100ul of sterile water to dissolve the DNA.
3. Close the tube and incubate for 10 minutes at room temperature.
4. Briefly vortex the tube and then do a quick spin (less than 5000xg) to concentrate the liquid at the bottom.
5. Store the suspended plasmid at -20°C. The DNA is stable for at least one year from date of shipping when stored at -20°C.

RefSeq: [NM_001135802.1](#), [NP_001129274.1](#)

RefSeq Size: 2768 bp

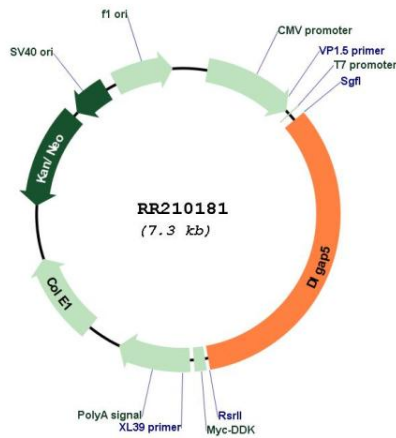
RefSeq ORF: 2448 bp

Locus ID: 289997

Cytogenetics: 15p14

MW: 90.5 kDa

Product images:



Circular map for RR210181