

## Product datasheet for **RR210174**

### Tab2 (NM\_001012062) Rat Tagged ORF Clone

#### Product data:

Product Type:	Expression Plasmids
Product Name:	Tab2 (NM_001012062) Rat Tagged ORF Clone
Tag:	Myc-DDK
Symbol:	Tab2
Synonyms:	Map3k7ip2
Mammalian Cell Selection:	Neomycin
Vector:	pCMV6-Entry (PS100001)
E. coli Selection:	Kanamycin (25 ug/mL)



[View online »](#)

**ORF Nucleotide Sequence:**

>RR210174 representing NM\_001012062  
 Red=Cloning site Blue=ORF Green=Tags(s)

TTTTGTAATACGACTCACTATAGGGCGGCCGGAATTCGTCGACTGGATCCGGTACCGAGGAGATCTGCC  
 GCC**CGCATCGCC**

ATGGCCCAAGGAAGCCACCAATTGATTTTCAGGTTTTACATGACCTGCGACAAAAGTCCCTGAAGTGC  
 CTGAAGTTGTTGTATCCAGGTGCATGTTACAGAACAATAAACCTGGATGCCTGCTGTGCTGTTCTCTC  
 TCAGGAGAGTACAAGGTATCTTTACGGTGAAGGAGACCTGAATTTTTAGATGAGTCTGGAAATTTCTGGT  
 CTACGCAATCACATGACTTCTCTCAACTTGGACTTGCAGTACAGAAATGTTTACCACCATGGAAGAGAAG  
 GAAGTCGAGTGAACGGAAGTAGGACTTTAACACACAGTGTAGCGATGGACAGCTTCAAGGTGGGCAGTC  
 CAATAACGAACTGTTTCAGCAGGAGCCACAACAGCACCAGCTCAAGTTCCTCAAGGCTTTAATGTTTTT  
 GGAATGCCAGTACATCTGGTCTTCTAATTCAACACCACATCTGGATTTACCTAGGCAGCAAAGGGA  
 CATCAAACCTCTCTCAACAACTCCAGGTTTAACTCTATTATGGTAACCTTAGCCCAAACATACAGAC  
 TGGCCGAAGCACCCCTACGTCTTTGCACATACATGGTGTGCCTCCACCTGTACTCAACAGCCACAGGGG  
 AATTCTATCTACATTAGGCCTTACATCACAACTCCTAGTGGTGCAGCTCGACAGACACAGCAGCATTCTG  
 GCTGGGTATCTCAGTTTAACTCCCGTGAACCCCTCAGCAAGCCTATCAGCCTTACAGCCTGGACCTTGGAC  
 TACTTATCCTGCATCCAATCCTTTGCCACATACCTCAACCCAGCAGCCGAATCAGCAGGGCCATCAGACC  
 TCTCATGTCTACATGCCTATCAGTTCGCCAACTACTCCACAACCGCCAACAGTTCCTCGTCTGCTAGCT  
 CTCAGTCTTCTGCCATAGCCAAATAACATTCAGAATATTTCAACAGGACCTCGAAAAACAGATAGA  
 AATCAAACCTGAACCCCAAAAGAAACAGTCTTCAAATACGTTCTTCTGGACCTCGAACTGCCAGC  
 ACTTCTCATTGGTCAACAGCCAGACCTTAAATAGAAATCAGCCCACTGTTTACATAGCTGCCAGTCCCTC  
 CAAGCACTGATGAGATGATCTCCCGTAGTCAACCCAAGTCTACATCTCAGCCAATGCCAGCACAGGAGA  
 TGAGCAGGGCATGCGGAATCAGCCTACACTCTTCATATCCACGAACTCTGGGGCCTCTGCAGCCTCCAGG  
 AACATGTCTGGGCAAGTGAAGTGGTCTGCCTTTATCCACCACCACCTCCCAAAAGCCGGGTGTAG  
 GTGGCACTCCGACGCTCCCTCGAGTGGTGGTACGACGACCAACACAAAGTACACCTTCAAATCAC  
 AGTTTTCTCCAATAAGCCCTGCGTCTCCCGGGGGTGTCTCCCCACCTTTGAACTTACAAATCTT  
 CTGAATCACCTGACCATTATGTAGAAACAGACTATTCAGCACCTCACAGACCCTACTCTAGCACAGC  
 TGGATAGAGTAAGCGAAGCACGGAACCTGAGTATGGGATCTGATGATGCTGCCTACACACAAGCTCTGCT  
 GGTGCACCAGAAGCCAGGATGGAACGGCTTCAAAGAGAGCTCGAGATGCAGAAGAAAAAGCTGGACAAA  
 CTCAAATCTGAGGTCAATGAGATGGAAAACAGTCTAACCGAAGGCGCCTGAAGAGTCCAACCTCATGT  
 CCCAGATACCTTCACTCGAAGAAATGCAGCAGTTGAGAAGTTGTAATAGCAAACTCCAGATTGACATTGA  
 CTGCTTAAACAAAGAAATTGATCTTTTTCAAGCCGAGGTAAGTTTCAAGTTCAGTGCATTCTCAGC

**ACGCGT**ACGCGGCCGCTCGAGCAGAACTCATCTCAGAAGAGGATCTGGCAGCAAATGATATCCTGGATT  
 ACAAGGATGACGACGATAAGGTTTAA

**Protein Sequence:**

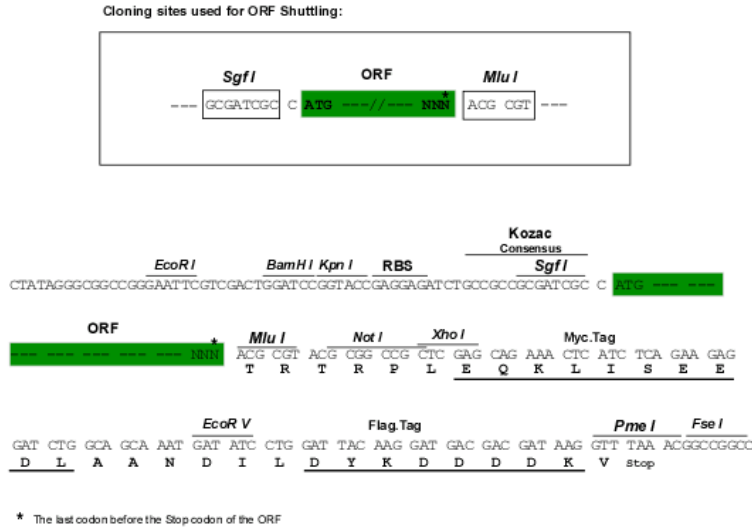
>RR210174 representing NM\_001012062  
 Red=Cloning site Green=Tags(s)

MAQGSHQIDFQVLHDLRQKFPEVPEVVVSRCLQNNNLDACCAVLSQESTRYLYGEGDLNFSDESGISG  
 LRNHMTSLNLDLQSQNVYHHGREGSRVNGSRTLTHSVSDGQLQGGQSNNELFQQEPQTAPAQVPQGFNVF  
 GMPSTSGASNSTPHLGFHLGSKGTSNLQQTPRFNPIMVTLAPNIQTGRSTPTSLHIHGVPVPLNSPQG  
 NSIYIRPYITTPSGAARQTQQHSGWVSQFNPNVNPQQAYQPSQPGPWTTYPASNPLPHTSTQQPNQQGHQT  
 SHVYMPISSPTTPQPPTVHSSASSQSSAHSQYNIQNIISTGPRKNQIEIKLEPPQRNSSSKLRSSGPRTAS  
 TSSLVNSQTLNRRNQPTVYIAASPPSTDEMISRSQPKVYISANASTGDEQGMNRNQPTLFIISTNSGASAASR  
 NMSGQVSMGPAFIIHHPPKSRVLLGGNSAASPRVVVTQPNTKYTFKITVSPNKPPAVSPGVVSPTEFELTNL  
 LNHPDHYVETETIQHLTDPTLAHVDRVSEARKLSMGSDDAAYTQALLVHQKARMERLQRELEMQKKLDDK  
 LKSEVNEMENSLTRRRLKRSNSMSQIPSL EEMQQLRSCNRQLQIDIDCLTKEIDLQFARGKVQCILS

**TRTRPLEQKLI**SEEDLAANDILDYKDDDDKV

**Restriction Sites:** SgfI-MluI

**Cloning Scheme:**



**ACCN:** NM\_001012062

**ORF Size:** 1881 bp

**OTI Disclaimer:** The molecular sequence of this clone aligns with the gene accession number as a point of reference only. However, individual transcript sequences of the same gene can differ through naturally occurring variations (e.g. polymorphisms), each with its own valid existence. This clone is substantially in agreement with the reference, but a complete review of all prevailing variants is recommended prior to use. [More info](#)

**OTI Annotation:** This clone was engineered to express the complete ORF with an expression tag. Expression varies depending on the nature of the gene.

**Components:** The ORF clone is ion-exchange column purified and shipped in a 2D barcoded Matrix tube containing 10ug of transfection-ready, dried plasmid DNA (reconstitute with 100 ul of water).

**Reconstitution Method:**

1. Centrifuge at 5,000xg for 5min.
2. Carefully open the tube and add 100ul of sterile water to dissolve the DNA.
3. Close the tube and incubate for 10 minutes at room temperature.
4. Briefly vortex the tube and then do a quick spin (less than 5000xg) to concentrate the liquid at the bottom.
5. Store the suspended plasmid at -20°C. The DNA is stable for at least one year from date of shipping when stored at -20°C.

**RefSeq:** [NM\\_001012062.1](#), [NP\\_001012062.1](#)

**RefSeq Size:** 4617 bp

**RefSeq ORF:** 1884 bp

**Locus ID:** 308267

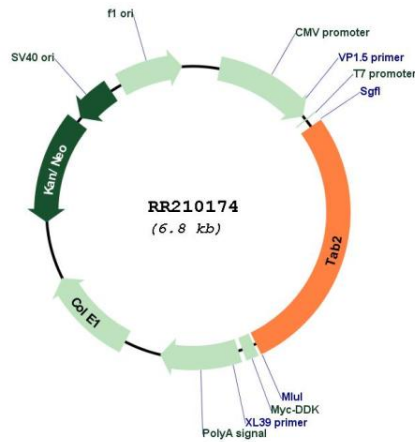
**UniProt ID:** [Q5U303](#)

**Cytogenetics:** 1p13

**MW:** 68.8 kDa

**Gene Summary:** Adapter linking MAP3K7/TAK1 and TRAF6. Promotes MAP3K7 activation in the IL1 signaling pathway. The binding of 'Lys-63'-linked polyubiquitin chains to TAB2 promotes autophosphorylation of MAP3K7 at 'Thr-187'. Regulates the IL1-mediated translocation of NCOR1 out of the nucleus (By similarity). Involved in heart development (By similarity). [UniProtKB/Swiss-Prot Function]

**Product images:**



Circular map for RR210174