

Product datasheet for **RR210110**

Unc13a (NM_022861) Rat Tagged ORF Clone

Product data:

Product Type:	Expression Plasmids
Product Name:	Unc13a (NM_022861) Rat Tagged ORF Clone
Tag:	Myc-DDK
Symbol:	Unc13a
Synonyms:	Munc13-1; Unc13h1
Vector:	pCMV6-Entry (PS100001)
E. coli Selection:	Kanamycin (25 ug/mL)
Cell Selection:	Neomycin
ORF Nucleotide Sequence:	>RR210110 representing NM_022861 Red=Cloning site Blue=ORF Green=Tags(s)

TTTTGTAATACGACTCACTATAGGGCGCCGGAATTCGTCGACTGGATCCGGTACCGAGGAGATCTGCC
GCC**CGATCGCC**

ATGTCTCTGCTGTGCGTGGGAGTCAAAAAGCCAAGTTTGACGGTGCCCAAGAGAAGTTCAACACATACG
TGACGCTGAAGGTGCAGAACGTGAAGAGCACTACCATAGCTGTACGCGCAGCCAGCCTAGCTGGGAGCA
GGACTTTCATGTTTGTAGATCAACCGCTGGATCTGGGCCTGACGGTGGAGGTGTGGAACAAGGGTCTCATC
TGGGACACAATGGTGGGTACTGTGTGGATCCCACTTCGGACCATCCGTCAGTCCAATGAGGAGGGTCCGG
GAGAATGGCTGACACTGGACTCTCAGGCCATCATGGCGGACAGTGAATCTGTGGGACCAAGGACCCAC
CTTCCACCGCATCCTCCTGGACGCATTTTGTAGCTGCCTTTGGACATCCCGAGGAGGAGGCGCGCTAC
TGGGCCAAGAAGCTGGAGCAGCTGAATGCCATGCGTGACCAAGATGAGTACTCCTTTAGGACCAGCAGG
ACAAGCCACTGCCGGTCCCAGCAGCCAGTGTGCAACTGGAATTACTTTGGCTGGGGAGAACAAGATGA
TGATCCCGACAGTGCCGTGGATGACCGGGACAGTGATTATAGGAGTGAGACGAGCAACAGCATCCCACCG
CCTTACTACACGACTTCGACGCCAATGCTTCGGTGCACCACTACTCCGTGCGGCCACCCCTCTGGGGT
CCCGGGAGTCTACAGCGACTCCATGCACAGCTATGAAGAGTTCTGTAGCCGCGGGCAGTCACTCCAC
AGGCAGCAGCCGCTATGCTTCCAGTGGGAGCTGAGCCAGGCAGCTCCAGCTGAGTGAGGACTTCGAC
CCGGATGAGCACAGCCTACAGGGCTCAGAGCTGGATGACGAGAGGACCGAGATTCTTACTCCTCTGCC
ACAGCTCTGTGAGCTACCACAAGGACTACCCCGCTGGGACCAGGATGAGGAGGACCTGGAGGACCTGGA
GGACCTGGAAGATGAGGAGTTGCCCGAGGAAGAGGAGTTGGAAGAGGAGGAGTTGGAGGAGGAGGAGG
TTGGAGGAAGAGGAATTGGAGTTGGAGGAGGAGGAGGAGTGCCTGATGACCTGGCCAGCTATACCCAGC
AGGAGGACACCACTGTGGCTGAGCCAAAGAGTTCAAGCGGATCAGCTTCCCAACAGCTGCACCTCAGAA
GGAAGACAAAGTTTCAGCTGTGCCATTGAGGCCCGCATGTGTCCAAAGGCATCCCAAGGCAGCCACA
CCTGAAGAGAAGGCAGCTGCGGAGTGTGCACAGGAAGCGGAGCCCAAGTCTGAGGAGAGTTTCAGAT
CTCGAGAGGCTGAGGAGGCCAGGAAGGCAGGATGCCATGTCCAGGGCCAAAGCCAAGTGGTTGCGAGC
CTTCAACAAGGTGCGCATGCAGCTGCAGGAGGCCCGAGGAGAAGGAGAGATGTCCAAGTCTCTGTGGTTC
AAAGGCGGCCCTGGTGGTGGCCTTATCATCATTGACAGCATGCCAGACATCAGGAAGCGGAAGCCATTC



[View online »](#)

CCCTCGTGAGCGACCTGGCTATGTCTCTGGTCCAGTCACGGAAGGCGGGCATCACCTCGGCCTTGCCCTC
 CAGCACGTTGAACAATGAAGAGTTGAAAAACCAGTTTACAAGAAGACCCTGCAAGCCTTAATCTACCCC
 ATCTCCTGCACCACGCCGCAACTTCGAGGTGTGGACGGCCACCCTCCACCTACTGCTACGAGTGCG
 AGGGGCTGCTGTGGGCATCGCGCGCAGGGCATGCGCTGCACCGAGTGCGGCGTTAAGTGCCACGAGAA
 GTGCCAAGACCTGCTCAACGCGGACTGCCTGCAGCGGGCGGTGAGAAGAGTTCTAAGCATGGCGCTGAA
 GACCCGACGCAGAATCATCATGGTGTGAAGGACCCCATGAAGATCCGCGAGCGCAACAAGCCGTGAGA
 TCTTCGAGCTGATCCAGGAGTCTTCGCGGTACCAAGAGCGCACACACAGCAGATGAAGGCCGTCAA
 GCAGAGTGTGCTGGATGGCAGATCCAAGTGGTCTGCCAAAATTAGCATCACGGTGGTCTGTGCCAGGGC
 TTGCAGGCCAAGGACAAGACAGGATCCAGTGACCCCTATGTCACCGTCCAGGTTGGGAAGACCAAGAAAA
 GGCAAAAACCATCTACGGGAACCTTAACCCAGTGTGGGAAGAGAATTTCCACTTTGAATGTCACAACCTC
 CTCTGACCGGATCAAGGTGCGTGTGTTGGATGAAGACGATGACATCAAATCCCGTGTGAAGCAAAGGTTT
 AAGAGGGAGTCTGATGACTTCTAGGGCAGACAATCATCGAGGTGCGGACGCTTAGCGGCGAGATGGATG
 TGTGGTACAATCTGGACAAGAGAACAGACAAGTCTGCTGTGTGGGCGCCATTGGCTTCCATCAGTGT
 GGAGATCAAAGGGGAGGAGAAGGTGGCACCTACCATGTCCAGTACACCTGTCTGCATGAGAACCTGTTT
 CATTGTTGACGGATGTACAGAACAATGGCGTGGTGAAGATCCCGATGCCAAAGGTGACGACGCCCTGGA
 AGGTTTACTATGATGAGACTGCCAGGAGATCGTGGATGAGTTTGCCATGCGCTATGGCGTTGAATCCAT
 CTACCAAGCCATGACCCACTTTGCCTGCCTCTCCTCCAAGTACATGTGCCTGGGGTACCCGCTGTGATG
 AGCACCTGCTTGCCAACATCAACGCCTACTACGCACACACCACCGCCTCCACCAACGTGTCTGCCTCCG
 ACCGCTTCGCTGCCTCCAATTTTCGGAAAGAGCGCTTTGTGAAACTTCTGGACCAGCTGCACAACCTCCT
 GCGGATTGACCTGTCATGTACCGGAACAACCTCCCGGCCAGCAGCCCGAGCGGCTGCAGGATCTCAAG
 TCCACAGTGGACCTGCTTACCAGCATCACCTTCTCCGGATGAAGGTTGAGGAACTGCAGAGTCCGCCAC
 GTGCCAGTCAAGTGGTGAAGGACTGCGTGAAGGCGTGCCTCAACTCCACCTACGAGTACATCTTCAACAA
 CTGTCTAGACTCTATGGCCGGGAGTACCAGACAGACCCGGCAAGAAGGGGGAGGTCCTCCCGGAGGAG
 CAAGGCCCTAGCATCAAGAACCTGGATTTCTGGTCCAAGCTCATACCCTCATCGTGTCTATCATTGAGG
 AGGATAAGAACTCCTACACACCCTGCCTCAATCAGTTTCCCAGGAGCTGAATGTGGGAAGATCAGTGC
 TGAGGTGATGTGGAGCTGTTTGCCAGGACATGAAGTACGCCATGGAGGAACACGACAAGCACCAGGCTG
 TGTAAGAGCGCAGACTACATGAACCTGCATTTCAAGGTCAAGTGGTTGTACAACGAGTACGTGGTGAAC
 TGCCACCTTCAAGGACCGCGTCCCGGAGTACCCTGCGTGGTTTGAGCCCTTCGTATCCAGTGGTTAGA
 TGAGAATGAGGAGGTGTCCCGGACTTCTGCTGCGTACTCGAGCGGACAAGAAGGATGGGTTCCAG
 CAGACATCGGAGCAGCCCTGTTCTCTGCTCGGTAGTGGACGTTCTCTCCAGCTCAACCAGAGCTTTG
 AGATCATCAAGAAGCTGGAGTGTCTGACCCCAAGATTGTGGCCACTACATGCGGCGCTTTGCCAAGAC
 CATTAGCAATGTCTTCTCCAGTACGCCGACATCGTCTCCAAGGACTTCGCTTCTACTGCTCCAAGGAG
 AAGGAGAAAGTGCCTGCATCCTCATGAACAACACACAGCAGCTGCGGGTGCAGCTGGAGAAGATGTTTCG
 AGGCGATGGGTGGGAAGGAGCTGGACGCCGAGGCCAGCGGAACCCCTGAAGGAGCTGCAGGTGAAACTCAA
 CAATGTCTGGATGAACTCAGCCACGTGTTTGCCACCAGCTTCCAGCCACACATCGAGGAGTGTGTGAGA
 CAAATGGGTGACATCCTAAGCCAAGTGAAGGGCACGGCAACGTGCCCGCCAGTGCCTGCAGCAGCGTGG
 CACAGGACGCAGACAACGTGCTACAGCCATCATGGATCTTCTGGACAGCAACCTCACCTGTTTGCCAA
 AATCTGTGAGAAGACGGTCTGAAGCGGGTGTGAAGGAGCTGTGAAGCTGGTGTGAACACCATGGAG
 AGGACCATTTGCTGCGCCACTCACTGACCAGACGATGATTGGTACCCTTTGAGAAAACATGGCAAGG
 GCCTAGAAAAGGGCAGGTTGAAACTGCCAAGCCACTCAGACGGGACACAATGATCTTCAATGCCGCCAA
 GGAGCTGGGCCAGCTGTCCAACCTGAAGGATCACATGGTGCAGAGAAGAAGCCAAGAGCTTACCCCGAAG
 CAGTGTGCCGTGGTTGAACTGGCCCTGGACACCATCAAGCAATACTTCCACGCGGGGGCGTGGCCCTCA
 AGAAGACCTTTCTCGAGAAAAGCCCGACCTTCACTCCCTGCGCTACGCCCTGTCGCTCTACACACAGGC
 CACCGACTGCTCATAAAACCTTCGTGCAGACGAGTACGCGCAGGTCCATGGTGGAAAGGGGACTAGG
 TTTACCCTTAGTGAAGACGTTTGTCTGAGATGGGCTCGGGTGTGAAGACCCTGTAGGTGAAGTATCCG
 TCCAGTGGAGCTGTTACGCATCCGGAACTGGGAACAGAAGGTCACAGTGAAGGTGGTGGCCGCCAA
 CGACCTCAAGTGGCAGACTTCTGGCATCTCCGTCCGTTTATTGAGGTCAACATCGTTGGACCTCAGCTC
 AGCGACAAGAAACGAAAGTTTCGCCACCAATCGAAAACAACAGCTGGGGGCCAAATATAACGAGAGCT
 TCCAGTTCTCCCTGAGCGCCGACGCGGGACCCGAGTGTACGAGTTGCAGGTGTGCGTGAAGGACTACTG
 CTTGCGCGCGAGGACCGCACGGTGGAGCTGGCGGTGCTGCAGCTGCGGGAGCTGGCTCAGCGCGGGAGC
 GCCGCGTGTGGCTGCCGCTCGGCCGCCGATCCACATGGACGACACGGGGCTCACAGTGTGCGTATCC
 TGTGCGAGCGCAGCAATGACGAGGTGGCCAAGGAGTTCGTCAAGTCAAGTCCGACACGCGCTCGGCCGA

GGAGGGCGGTGCCGCGCCTGCGCCC

ACGCGTACGCGGCCGCTCGAGCAGAACTCATCTCAGAAGAGGATCTGGCAGCAATGATATCCTGGATT
ACAAGGATGACGACGATAAGGTTTAA

Protein Sequence:

>RR210110 representing NM_022861
Red=Cloning site Green=Tags(s)

MSLLCVGVKAKFDGAQEKFNITYVTLKVQNVKSTTIAVRGSQPSWEQDFMFEINRLDLGLTVEVWNKGLI
WDTMVGTVWIPLRTIRQSNEEGPGEWLTLDSQAIMADSEICGTDKPTFHRILLDAHFEPLDIPPEEARY
WAKKLEQLNAMRDQDEYSFDQDQDKPLPVPSSQCCNWNYPGWGEQNDPDSAVDDRSDYRSETSNSIPP
PYTTTSQPNASVHQYSVRPPPLGSRESYSDSMHSYEEFSEPRAL SPTGSSRYASSGELSQQSSQLSEDFD
PDEHSLQSGSELDDERDRDSYHSCSSVSYHKDSPRWDQDEEDLEDELEDEELPEEEEEEEEEEEEE
LEEEEELEEEEEVPDDLASYTQQEDTTVAEPKEFKRISFPTAAPQKEDKVSAPVIEAPDVSKGIPKAAT
PEEKAAAECAQEAEPKSEESFRSREAEEGQEQDAMSRAKANWLRANFKVRMQLQEARGEGEMSKSLWF
KGGPGGLIIDSMPDIRKRKPIPLVSDLAMSLVQSRKAGITSALASSTLNNEELKNHVYKTLQAL IYP
ISCTTPHNFVWTATTPTYCYECEGLLWGIARQGMRCTECGVKCHEKQDLLNADCLQRAAEKSSKHGAE
DRTQNIIMVLKDRMKIRERNKPEIFELIQEVFAVTKSAHTQMKAVKQSVLDGTSKWSAKISITVCAQG
LQAKDKTGSSDPYVTQVGKTKKRTKIYGNLNPVWEENFHFECNSSDRIKVRVLEDDDDIKSRVKQRF
KRESDDLGTIIEVRTLSGEMDVWYNLDKRTDKSAVSGAIRLHISVEIKGEEKVAPYHVQYTCLENLH
HFVTDVQNGGVKIPDAKGDDAWKVVYDETAQEI VDEFAMRYGVE SIYQAMTHFACLSSKYMCPGVPAM
STLLANINAYYAHTTASTNVASDRFAASNFGKERFVKLLDQLHNSLRIDL SMYRNNFPASSPERLQDLK
STVDLLTSITFFRMKVQELQSPPRASQVVKDCVKAACLNSTYEYIFNNCHELYGREYQTDPAKKGVEPPEE
QGSPKINLDFWSKLITLIVSII EEDKNSYTPCLNQFPQELNVGKISAEVMWSLFAQDMKYAMEEHDKHL
CKSADYMNLFHKVWLYNEYVAELPTFKDRVPEYPAWFEPFVIQWLDENEESRDFLHGALERDKKDG
QTSEHALFSCSVVDVFSQLNQSF EIIKKLECPDPQIVGHYMRRAKTISNVLLQYADIVSKDFASYCSKE
KEKVPCILMNNTQQLRVQLEKMF EAMGGKELDAEASGTLKELQVKLNNVLEL SHVFATSFQPHIEECVR
QMGDILSQVKGTVGNVPASACSSVAQDADNVLPIMDLLSNLTLFAKICEKTVLKRVLKELWKLVMNTME
RTIVLPLTDQTMIGTLLRKHGKLEKGRVKLP SHSDGTQMI FNAAKELGQLSKLKDHMVREEAKSLTPK
QCAVELALDTIKQYFHAGGVGLKKTFLKSPDLQSLRYALSLYTQATDLLIKTFVQTQSAQVHGGKGR
FTLSEDEVCEMGSVEDPVGEVSVHVELFTHPGTGEQKVTVKVVAANDLKWQTSGLFRPFIEVNI VGPQL
SDKKRKFATKSKNNSWAPKYNESFQFSLSADAGPECYELQVCVKDYCFAREDRTVELAVLQLRELAQRGS
AACWLPLGRRIMDDTGLTVLRILSQRSNDEVAKEFVKLKS DTRS AEEGGAAPAP

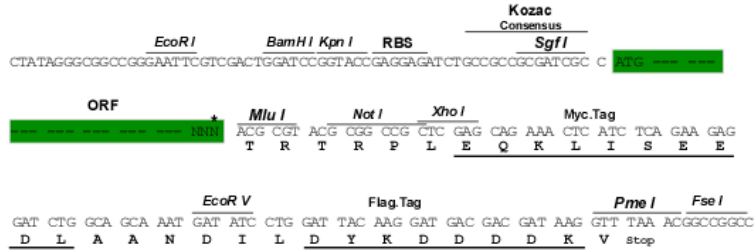
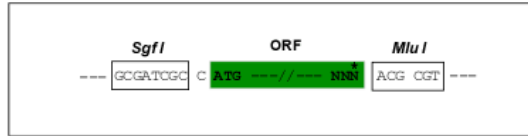
TRTRPLEQKLI SEEDLAANDILDYKDDDDKV

Restriction Sites:

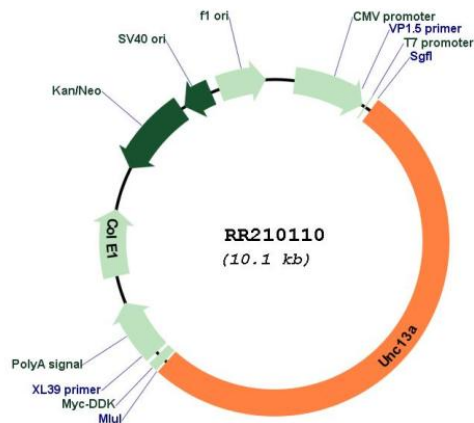
Sgfl-Mlul

Cloning Scheme:

Cloning sites used for ORF Shuttling:



* The last codon before the Stop codon of the ORF

Plasmid Map:


ACCN: NM_022861

ORF Size: 5205 bp

OTI Disclaimer: The molecular sequence of this clone aligns with the gene accession number as a point of reference only. However, individual transcript sequences of the same gene can differ through naturally occurring variations (e.g. polymorphisms), each with its own valid existence. This clone is substantially in agreement with the reference, but a complete review of all prevailing variants is recommended prior to use. [More info](#)

OTI Annotation: This clone was engineered to express the complete ORF with an expression tag. Expression varies depending on the nature of the gene.

Components: The ORF clone is ion-exchange column purified and shipped in a 2D barcoded Matrix tube containing 10ug of transfection-ready, dried plasmid DNA (reconstitute with 100 ul of water).

Reconstitution Method:

1. Centrifuge at 5,000xg for 5min.
2. Carefully open the tube and add 100ul of sterile water to dissolve the DNA.
3. Close the tube and incubate for 10 minutes at room temperature.
4. Briefly vortex the tube and then do a quick spin (less than 5000xg) to concentrate the liquid at the bottom.
5. Store the suspended plasmid at -20°C. The DNA is stable for at least one year from date of shipping when stored at -20°C.

RefSeq: [NM_022861.1](#), [NP_074052.1](#)

RefSeq Size: 6683 bp

RefSeq ORF: 5208 bp

Locus ID: 64829

UniProt ID: [Q62768](#)

Cytogenetics: 16p14

MW: 196.4 kDa

Gene Summary: brain specific protein that may have role during neurotransmitter release [RGD, Feb 2006]