

## Product datasheet for **RR210063**

### Sulf2 (NM\_001034927) Rat Tagged ORF Clone

#### Product data:

Product Type:	Expression Plasmids
Product Name:	Sulf2 (NM_001034927) Rat Tagged ORF Clone
Tag:	Myc-DDK
Symbol:	Sulf2
Vector:	pCMV6-Entry (PS100001)
E. coli Selection:	Kanamycin (25 ug/mL)
Cell Selection:	Neomycin



[View online »](#)

ORF Nucleotide  
Sequence:

>RR210063 representing NM\_001034927  
 Red=Cloning site Blue=ORF Green=Tags(s)

TTTTGTAATACGACTCACTATAGGGCGGCCGGAATTCGTCGACTGGATCCGGTACCGAGGAGATCTGCC  
 GCC**GCGATCGCC**

ATGGCACCCCCTGGCCTGCCACTGTGGCTGCTGCCACCGCTCTCTTCTCCCTTCTGGCTGGCAGCTCAG  
 CCTTCCTCTCCTATCCCCGCCTGAAGGGTCGCTTCCAGAGGGACCGCAGGAATATCCGGCCAACATCAT  
 CTTGGTGCTCACGGATGACCAGGACGTGGAGCTGGGCTCCATGCAGGTGATGAACAAGACACGACGTATC  
 ATGGAGCAGGGCGGGGCACACTTCATCAACGCCTTCGTGACTACACCTATGTGCTGTCCCTCTCGCTCCT  
 CCATCCTCACGGCAAGTACGTCCACAATCACAACACCTACACCAACAACGAGAAGTGTTCCTCGCCCTC  
 CTGGCAGGCACAGCATGAGAGCCGAACCTTCGCCGTGTACCTCAACAGCACTGGCTACGGGACAGCTTTC  
 TTCGAAAATACCTCAATGAATAACAACGGCTCATATGTGCCGCCTGGCTGGAAGGAGTGGTTGGACTCC  
 TTAAGAAGTCCGCTTTTTATAACTACACACTCTGCCGGAATGGGATGAAGGAGAAGCATGGCTCTGACTA  
 CTCACCGATTACCTCACAGATCTCATACCAATGACAGTGTGAGCTTCTCCGAACATCCAAGAAGATG  
 TACCCACACAGACTGTGCTCATGGTCATCAGCCACGCAGCTCCCCACGGCCCTGAGGACTCAGCACCCC  
 AGTACTCAGCCTCTTCCCAATGCATCCCAGCACATCACACCGAGTTACAACATGCACCCAACCCAGA  
 CAAGCACTGGATCATGCGCTACACGGGACCCATGAAGCCATTACATGGAATTCACCAACATGCTACAG  
 CGCAAACGCCTGCAGACCCTCATGTCTGTGGACGACTCCATGGAGACGATCTATGACATGCTAGTGGAGA  
 CGGGCGAGCTGGACAATACCTACATCGTGTACACCGCCGACCACGGCTACCACATTGGCCAGTTTGGCCT  
 GGTGAAGGGCAAGTCCATGCCCTATGAGTTTGACATCAGGGTCCCCTTCTATGTGCGGGGCCCCAGCGTG  
 GAAGTGGCTCTCTGAACCCCAACATCGTCTCAACATTGACCTGGCCCCCACCATACTGGATATCGTGAG  
 GACTGGACATCCCTGCAGACATGGACGGGAAGTCCATCCTCAAACACTGGACTCAGAGCGGCAATGGA  
 CCGGTTCCACCTGAAAAAGAAGCTGAGGGTCTGGCGAGACTCCTTCTGTTGGAAGAGGCAAACTGCTC  
 CACAAGAGGGAGGGTGACAAAGTGAACGCCAGGAGGAGAACTTCTGCCCAAGTATCAGCGTGTGAAGG  
 ACCTGTGTCAAAGGGCTGAGTACCAGACAGCATGCGAGCAGCTAGGGCAGAAAGTGGCAGTGTGTAGAGGA  
 CGCTTCTGGGGCGCTGAAGCTGCACAAGTGTAAAGGCCCGGTGCGGTTCCGGGGCGGTGGTACAGAGCC  
 CTCTCAAACCTGGTGCCCAAGTACGACGGCCAAAGCAGCGAGGCTGCAGCTGTGACGGCGGCGGGCGG  
 GAGGGGACTACAACTGGCCTGGCTGGACGCCGGAAGCTCTTTAAGAAAAAGTACAAGACCAGCTATGC  
 CCGGAACCGCTCCATCCGCTCTGTGGCCATCGAGGTGGATGGCGAGGTATACCACGTAGGCTTGGATAAC  
 ATGCCGCTGCCCCGCAACCTACCAAGCGTCACTGGCCAGGGGCCCTGAAGACCAGGATGACAAGGATG  
 GTGGAAGTTTCACTGGTACTGGTGGCCTTCCAGATTATCTGCCCCCAATCCCATTAAGTACCCATCG  
 GTGCTACATCCTTGAGAATGACACAGTCCAGTGTGACTTGGACCTGTACAAGTCCCTGCAGGCTTGGAAA  
 GACCACAAATTGCACATCGACCATGAGATTGAAACCTGCAGAACAAAATTAAGAACCTTCGAGAAGTCA  
 GGGGTACCTGAAGAAGAAGCGGCCAGAAGAATGTGACTGTACAAAAGTCAAGTACCACAGCCAACACAA  
 AGGCCGCTCAAGCACAAGGGCTCCAGCCTGCACCCTTTCAGGAAGGGTCTGCAGGAGAAAGACAAGGTG  
 TGGCTGTTGCGGGAGCAGAAACGCAAGAAGAACTGCGCAAGCTGCTGAAGCGACTGCAGAACAAATGACA  
 CGTGCAGCATGCCGGCCTCACGTGCTTACTCACGACAACCACCACTGGCAGACCAGCGCCGCTCTGGAC  
 GTTGGGACCCTTCTGCGCCTGCACCAGCGCCAACAATAACACGTACTGGTGCCTGCGGACCATCAACGAG  
 ACCCACAACCTTCTTCTGTGAATTCGAACTGGCTTCATAGAATACTTTGACCTCAGTACGGACCCCT  
 ACCAGCTGATGAACGCGGTCAACACACTGGACAGGGACGTTCTCAACCAGCTGCACGTCCAGCTCATGGA  
 GCTAAGGAGCTGCAAAGGCTACAAGCAGTGTAAACCCCGACCCGCAATATGGACCTGGGGCTTAGAGAC  
 GGAGGAAGCTATGAGCAATACAGGCAGTTTCAGCGTCGAAAATGGCCAGAAATGAAGAGACCCTCTTCCA  
 AATCACTGGGACAGCTATGGGAAGTTGGGAAGGC

**ACGCGT**ACGCGGCCGCTCGAGCAGAACTCATCTCAGAAGAGGATCTGGCAGCAATGATATCTGGATT  
 ACAAGGATGACGACGATAAGGTTTAA

Protein Sequence: >RR210063 representing NM\_001034927  
Red=Cloning site Green=Tags(s)

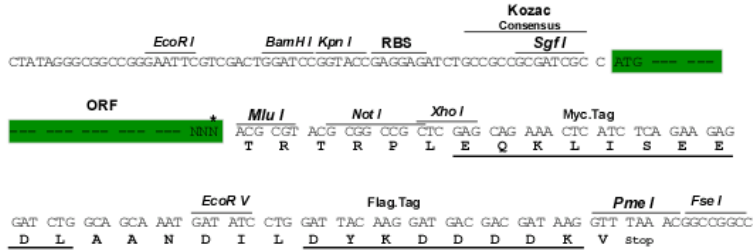
MAPPGLPLWLLSTALFSLLAGSSAFLSYPRLKGRFQRDRRNIRPNIILVLTDDQDVELGSMQVMNKTRRI  
MEQGGAHFINAFVTTMCCPSRSSILTGKYVHNHNTYTNNECSPSPWQAQHESTRFAVYLNSTGYRTAF  
FGKYLNEYNGSYVPPGWKEWVGLLKNSRFYNYTLCRNGMKEKHGSDYSTDYLTDLITNDSVSFFRTSKKM  
YPHRPVLMVISHAAPHGPEDSAPQYSRLFPNASQHITPSYNYAPNPKHWIMRYTGPMKPIHMEFTNMLQ  
RKRLQTLMSVDDSMETIYDMLVETGELDNTYIVYTADHGYHIGQFGLVKGKSMPEYFDIRVPFYVRGSPV  
EAGSLNPHIVLNIDLAPTILDIAGLDIPADM DGKSILKLLD SERPVNRFHLKKKLRVWRDSFLVERGKLL  
HKREGDKVNAQEENFLPKYQRVKDLCQRAEYQTACEQLGQKWQCVEDASGALKLHKCKGPVRFGGGGDRA  
LSNLVPKYDQSSSEACSCDGGGGGGDYKLAGRRKLFKKKYKTSYARNRSIRSVAIEVDGEVYHVGLDN  
MPLPRNLTKRHWP G APEDQDDKGGFS SGTGGLPDYSAPNPIKVTHRCYILENDTVQCDL DL YKSLQAWK  
DHKLHIDHEIETLQNKIKNLREVRGHLKKRPEECDCHKVSYHSQHKGRLKHKGSSLHPFRKGLQEKDKV  
WLLREQRKKKLRKLLKRLQNNDTCSMPGLTCFTHDNHHWQTAPLWTLGPFCACTSANNNYWC LRTINE  
THNFLCFEATGFIEYFDLSTDPYQLMNAVNTLDRDVLNQLHVQLMELRSCKGYKQCNPRTRNMDLGLRD  
GGSYEYRQFQRRKWPEMKRPSSKSLGQLWEGWEG

TRTRPLEQKLI SEEDLAANDILDYKDDDDKV

Restriction Sites: Sgfl-MluI

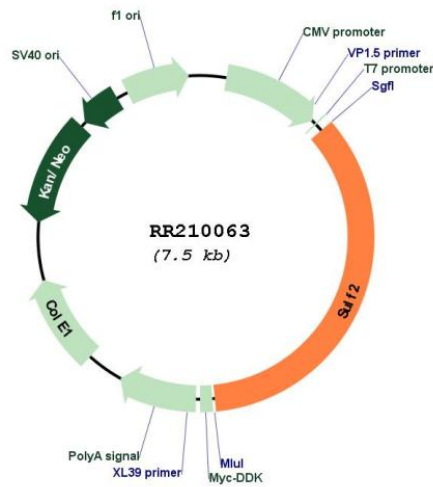
Cloning Scheme:

Cloning sites used for ORF Shutting:



\* The last codon before the Stop codon of the ORF

Plasmid Map:



<b>ACCN:</b>	NM_001034927
<b>ORF Size:</b>	2625 bp
<b>OTI Disclaimer:</b>	The molecular sequence of this clone aligns with the gene accession number as a point of reference only. However, individual transcript sequences of the same gene can differ through naturally occurring variations (e.g. polymorphisms), each with its own valid existence. This clone is substantially in agreement with the reference, but a complete review of all prevailing variants is recommended prior to use. <a href="#">More info</a>
<b>OTI Annotation:</b>	This clone was engineered to express the complete ORF with an expression tag. Expression varies depending on the nature of the gene.
<b>Components:</b>	The ORF clone is ion-exchange column purified and shipped in a 2D barcoded Matrix tube containing 10ug of transfection-ready, dried plasmid DNA (reconstitute with 100 ul of water).
<b>Reconstitution Method:</b>	<ol style="list-style-type: none"><li>1. Centrifuge at 5,000xg for 5min.</li><li>2. Carefully open the tube and add 100ul of sterile water to dissolve the DNA.</li><li>3. Close the tube and incubate for 10 minutes at room temperature.</li><li>4. Briefly vortex the tube and then do a quick spin (less than 5000xg) to concentrate the liquid at the bottom.</li><li>5. Store the suspended plasmid at -20°C. The DNA is stable for at least one year from date of shipping when stored at -20°C.</li></ol>
<b>RefSeq:</b>	<a href="#">NM_001034927.1</a> , <a href="#">NP_001030099.1</a>
<b>RefSeq Size:</b>	4172 bp
<b>RefSeq ORF:</b>	2628 bp
<b>Locus ID:</b>	311642
<b>Cytogenetics:</b>	3q42
<b>MW:</b>	100.5 kDa