

Product datasheet for **RR210046**

F2 (NM_022924) Rat Tagged ORF Clone

Product data:

Product Type:	Expression Plasmids
Product Name:	F2 (NM_022924) Rat Tagged ORF Clone
Tag:	Myc-DDK
Symbol:	F2
Vector:	pCMV6-Entry (PS100001)
E. coli Selection:	Kanamycin (25 ug/mL)
Cell Selection:	Neomycin



[View online »](#)

ORF Nucleotide Sequence:

>RR210046 representing NM_022924
 Red=Cloning site Blue=ORF Green=Tags(s)

TTTTGTAATACGACTCACTATAGGGCGGCCGGAATTCGTCGACTGGATCCGGTACCGAGGAGATCTGCC
 GCC**CGGATCGCC**

ATGTCGCACGTCCTCGGGCTGGGCTACCTGGCTGCCTGGCTCTGGCTGCCTGGCTAGCCTGGTACACA
 GTCAGCATGTGTTCTGGCCCTCAGCAAGCACTGTCGCTGCTCCAGCGGTCGCGAGGCAACAGCGG
 CTTCTGGAGGAGCTCCGAAAGGCAACCTGGAGCGTGTGTCGTTGGAAGAGCAGTGCAGCTATGAGGAG
 GCTTTTGGAGCCCTGGAGTCTCCCAAGACACGGATGTGTTCTGGGCAAGTACACAGTGTGTGATTGAG
 TGAGGAAACCTCGAGAGACCTTCATGGACTGTCTAGAAGTTCGCTGTGCTATGGATCTGGGTCTGAACTA
 CCATGGGAATGTGAGTGTACCCATACCGGCATCGAGTGTGAGTGTGGCAAGCCGCTACCCACACAGG
 CCTGACATCAACTCCACCACCCATCCTGGGGCTGACCTGAAGGAGAACTCTGCCGAAATCCAGACAGCA
 GCACCTCAGGGCCCTGGTGTACACCACAGACCCTACTGTGCGCAGAGAGGAATGCAGTATCCCTGTCTG
 TGGTCAGGAGGGCCGTACCACTGTGAAATGACTCCTCGCTCAAGAGGTTCCAAGGAGAATCTGTGCGCT
 CCATTGGGAGAGTGCCTCCTCGAGCGTGGCCGGCTGTACCAAGGGAACTTAGCTGTGACAACACTTGGGT
 CCCCCTGCCTGGCCTGGGACAGTTTGCCAAACAAGACCCTGAGCAAGTACCAGAAGTTCGACCCTGAGGT
 GAAACTCGTGCAAACTTCTGCCGCAATCCAGACCGGGATGAGGAGGGCGCGTGGTCTTTGTTGCGCAG
 CAGCCTGGTTTTGAATACTGCAGCCTCACTACTGTGATGAAGCGGTGGGAGAGGAGAACCATGACGGGG
 ACGAGTCCATCGCAGGACGCACCACCGACGCGGAGTCCACACCTTCTTCGATGAGAGGACTTTCGGCCT
 TGGGGAGGCAGACTGTGGCCTGCGGCCTTTGTTGAGAAGAAGTCTTGCAGACAAAACGGAAAAGGAG
 CTTCTTGATTCTACATAGATGGGCGCATCGTGGAGGGCTGGGACGCTGAGAAGGGTATCGCCCCATGGC
 AGGTGATGCTTTTTCGGAAGAGTCCCAAGAGCTGCTGTGTGGAGCCAGCCTTATCAGTATCGATGGGT
 CCTCACTGCTGCCCACTGCATTCTGTACCCACCCTGGGACAAGAAGTCTCACTGAGAATGACCTCCTGGTG
 CGCATTGGCAAGCACTCCAGAACCAGATATGAGCGGAATGTTGAAAAGATCTCCATGCTGAAAAAGATCT
 ACATCCACCCAGATATAACTGGCGGAAAACTAGACCGTGACATTGCTCTGCTCAAGCTAAAGAAGCC
 AGTGCCCTTCAGTGACTACATTCACCCCGTGTGCTTGCCAGACAAGCAGACAGTAACCAGTTTGTCCAG
 GCTGGTTATAAAGGGCGGGTACAGGCTGGGGCAACCTTCGGGAGACGTGGACAATAACATCAACGAGA
 TACAGCCAGCGTCTGCAGGTGGTGAACCTGCCATTGTAGAGCGACCAGTGTGCAAGGCTCTACCCG
 GATACGCATTACTGACAACATGTTCTGTGCTGGCTTCAAGGTGAATGACACCAAGCGAGGAGATGCTTGT
 GAAGGTGACAGTGGGGACCTTTTGTGATGAAGAGCCCTACAACCACCGCTGGTACCAATGGGTATTG
 TCTCCTGGGGTGAAGGCTGTGACCGGAATGGGAAATATGGCTTCTACACGCACGTGTTCCGTCTGAAAAG
 GTGGATGCAGAAAGTCATTGATCAGCATAGA

ACGCGTACGCGGCCGCTCGAGCAGAACTCATCTCAGAAGAGGATCTGGCAGCAATGATATCCTGGATT
 ACAAGGATGACGACGATAAGGTTTAA

Protein Sequence:

>RR210046 representing NM_022924
 Red=Cloning site Green=Tags(s)

MSHVRGLGLPGCLALAALASLVHSQHVFLAPQQALSLLRVRRANSGLFLEELRKNLERECVVEEQCSYEE
 AFEALSPQDQDVFVWAKYTVCDVSRKPRETFMDCLEGRCAAMDGLNYHGNSVTHGTGIECQLWRSRYPHR
 PDINSTTHPGADLKENFCRNPDSSTSGPWCYTDDPTVRREECSIPVCGQEGRTTVKMTPRSRSKSNLSP
 PLGECLLERGRLYQGNLAVTTLGSPLAWDSLPTKLSKYQNFDPVEVKLVQNFRCRNPDRDEEGAWCFVAQ
 QPGFEYCSLNYCDEAVGEEHNDGDESIAGRTTDAEFHTFFDERTFGLGEADCGLRPLFEKSLTDKTEKE
 LLDSYIDGRIVEGWDAEKGIAPWQVMLFRKSPQELLCGASLISDRWVLAHCILYPPWDKNFTENDLLV
 RIGKHSRTRYERNVEKISMLEKIYIHPRYNWRNLRDIALLLKPKVPVSDYIHPVCLPDKQTVTSLQ
 AGYKGRVTGWGNLRETWTNINEIQPSVLQVNLPIVERPVCKASTRIRITDNMFCAGFKVNDTKRGDACC
 EGDSSGPFVMSKSPYNHRWYQMGIVSWGEGCDRNGKYGFYTHVFRLLKRWMLKVIDQHR

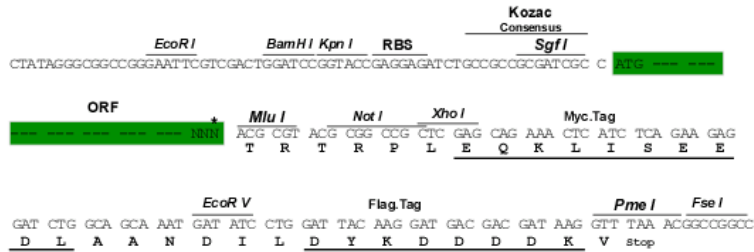
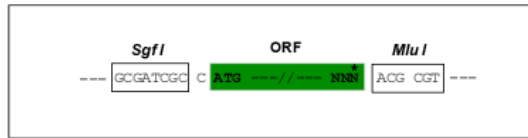
TRTRPLEQKLISEEDLAANDILDYKDDDDKV

Restriction Sites:

Sgfl-MluI

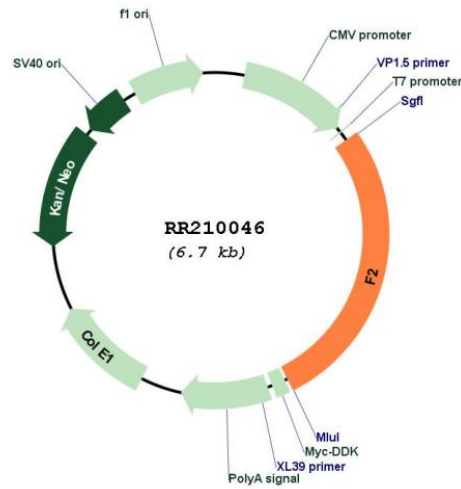
Cloning Scheme:

Cloning sites used for ORF Shuttling:



* The last codon before the Stop codon of the ORF

Plasmid Map:



ACCN: NM_022924

ORF Size: 1851 bp

OTI Disclaimer:	The molecular sequence of this clone aligns with the gene accession number as a point of reference only. However, individual transcript sequences of the same gene can differ through naturally occurring variations (e.g. polymorphisms), each with its own valid existence. This clone is substantially in agreement with the reference, but a complete review of all prevailing variants is recommended prior to use. More info
OTI Annotation:	This clone was engineered to express the complete ORF with an expression tag. Expression varies depending on the nature of the gene.
Components:	The ORF clone is ion-exchange column purified and shipped in a 2D barcoded Matrix tube containing 10ug of transfection-ready, dried plasmid DNA (reconstitute with 100 ul of water).
Reconstitution Method:	<ol style="list-style-type: none">1. Centrifuge at 5,000xg for 5min.2. Carefully open the tube and add 100ul of sterile water to dissolve the DNA.3. Close the tube and incubate for 10 minutes at room temperature.4. Briefly vortex the tube and then do a quick spin (less than 5000xg) to concentrate the liquid at the bottom.5. Store the suspended plasmid at -20°C. The DNA is stable for at least one year from date of shipping when stored at -20°C.
RefSeq:	NM_022924.2 , NP_075213.2
RefSeq Size:	2005 bp
RefSeq ORF:	1854 bp
Locus ID:	29251
Cytogenetics:	3q24
MW:	70.4 kDa
Gene Summary:	catalyzes the preferential cleavage of Arg-Gly; activates fibrinogen to fibrin and releases fibrinopeptides A and B; involved in blood coagulation and wound repair [RGD, Feb 2006]