

Product datasheet for **RR210023**

Slc6a3 (NM_012694) Rat Tagged ORF Clone

Product data:

Product Type:	Expression Plasmids
Product Name:	Slc6a3 (NM_012694) Rat Tagged ORF Clone
Tag:	Myc-DDK
Symbol:	Slc6a3
Synonyms:	Dat1
Vector:	pCMV6-Entry (PS100001)
E. coli Selection:	Kanamycin (25 ug/mL)
Cell Selection:	Neomycin



[View online »](#)

ORF Nucleotide Sequence:

>RR210023 representing NM_012694
 Red=Cloning site Blue=ORF Green=Tags(s)

CTATAGGGCGGCCGGGAATTCGTCGACTGGATCCGGTACCGAGGAGATCTGCCGCCGCGATCGCCGGCGC
 GCCC

ATGAGTAAGACAAATGCTCCGTGGACCAATGTCTTCAGTGGTGGCCCCGGCTAAAGAGTCCAATGCTG
 TGGGCCCCAGAGAGGTGGAGCTCATCTGGTCAAGGAGCAGAACGAGTGCAGCTGACCAACTCCACCCT
 CATCAACCCGCCACAGACACCAGTGGAGGCTCAAGAGCGGGAGACCTGGAGCAAGAAAATTGATTCCTG
 CTATCAGTCATCGGCTTTGCTGTGGACCTGGCCAAATGTCTGGAGGTTCCCTACCTGTGTACAAAAATG
 GTGGAGGTGCCTTCTGGTGCCTACCTGCTTTCATGGTTATTGCTGGGATGCCCTCTTCTACATGGA
 GCTGGCTCTCGGACAGTCAACAGAGAAGGAGCTGCTGGTGTCTGGAAGATCTGCTCTGCTGAAAGGT
 GTGGGCTTCACTGTTATCCTCATCTCTTCTACGTGGGCTTCTTACAATGTCATCATCGCATGGGCAC
 TGCCTACTTCTTCTCCTCCTTACCATGGACCTCCCATGGATCCACTGCAACAACCTGGAATAGCCC
 CAACTGCTCCGATGCCCATGCCAGCAACTCTAGCGACGGCTGGGCTCAATGACACCTTTGGGACCACA
 CCCGCTGCTGAGTACTTTGAGCGTGGCGTGTGCACCTTACCAGAGCCGTGGCATTGATGACCTGGGCC
 CTCCACGGTGGCAGCTCACAGCCTGCCTGGTGTGGTCAATTGTTCTGCTCTACTTCAGCCTATGGAAGGG
 AGTAAAGACCTCAGGGAAGGTGGTGTGGATCACAGCTACCATGCCCTATGTGGTCCCTCACGGCCTGCTC
 CTGCGTGGAGTTACCTTCTGGAGCCATGGATGGCATCAGAGCATACCTCAGTGTGGACTTCTACCGAC
 TCTGTGAGGCATCTGTGTGGATCGATGCTGCCACCCAGGTGTGCTTCTCCTCGGCGTGGGTTGGAGT
 GCTGATTGCCCTTCTCAGTTACAATAAGTTCACCAATAACTGCTATAGAGACGCAATCATACCACCTCC
 ATTAACCTCCGACAAGCTTCTCCTCTGGCTTCGTGCTTCTCCTTCTGGGGTACATGGCACAGAAGC
 ACAATGTGCCCATCAGAGATGTGGCCACAGATGGACCTGGGCTCATCTTCATCATCTCCTGAGGCGAT
 CGCCACACTCCCCTGTCTTCTGCCTGGGCTGCTGTCTTCTCCTCATGCTGCTCACTCTGGGTATCGAC
 AGTGCAATGGGGGCATGGAGTCACTGATCACTGGGCTCGTCGATGAGTCCAGCTGCTACATCGGCATC
 GAGAGCTTCACTCTTGGCATTGTCTGGCTACTTTCCTGCTGTCTCTTCTGCGTCACCAACGGTGG
 CATCTACGTCTTCACTGCTGGACCACTTTCAGCTGGCACATCTATCCTTCTGGCGTCTCATTGAA
 GCCATTGGGGTGGCCTGGTCTACGGCGTCCAGCAATTCAGTGTGACATCAAGCAAATGACAGGGCAGC
 GACCAACCTGTACTGGCGGCTATGCTGGAAGCTGGTCAAGCCCTGCTTCTCCTGTATGTGGTCTGGT
 CAGCATTGTGACCTTCAAGCCCCACACTATGGGGCTACATCTCCAGACTGGGCAATGCCCTGGGC
 TGGATCATGCCACATCCTCATGGCCATGGTGGCCATTTATGCGACCTACAAGTCTGACGCTGCCGG
 GGTCTTCCGGGAGAACTGGCCTATGCCATCACACTGAGAAAGACCATCAGCTAGTGGACAGAGGGGA
 GGTGCGCAATTCAGCTGCGTCACTGGCTGTTGCTG

ACGCGTACGCGGCCGCTCGAGCAGAACTCATCTCAGAAGAGGATCTGGCAGCAAATGATATCCTGGATT
 ACAAGGATGACGACGATAAGGTTTAA

Protein Sequence:

>RR210023 representing NM_012694
 Red=Cloning site Green=Tags(s)

MSKSKCSVGMSSVVPAPAKESNAVGPREVELILVKEQNGVQLTNSLAINPPQTPVEAQERETWSKKIDFL
 LSVIGFAVDLANVWRFPYLCYKNGGGAFLVPYLLFMVIAGMPLFYMELALGQFNREGAAGVWKICPVLKG
 VGFTVILISFYVGFYFNVIIAWALHYFFSSFTMDLPWIHCNNTWNPNCSDAHASNSSDGLGLNDTFGTT
 PAAEYFERGVHLHQSRGIDDLGPPRWQLTACLVLVIVLLYFSLWKGVKTSKGVVWITATMPYVVL TALL
 LRGVTLPGAMDGIRAYLSVDFYRLCEASVWIDAATQVCFSLGVGFGVLI AFSSYNKFTNNCYRDAIITTS
 INSLTSFSSGFVVSFLGYMAQKHNVPIRDVATDGPGLIFIIYPEAIATLPLSSAWAAVFFLMLLTLGID
 SAMGGMESVITGLVDEFQLLRHRELFTLGIVLATFLLSLFCVTNGGIYVFTLLDHAAGTSILFGVLI E
 AIGVAFYGVQQFSDDIKQMTGQRPNL YWRLCWKLVSFCFLLYVVVSVIVTFRPPHYGAYIFPDWANALG
 WIIATSSMAMVPIYATYKFCSLPGSFREKLAYAITPEKDHQLVDRGEVRQFTLRHWLLL

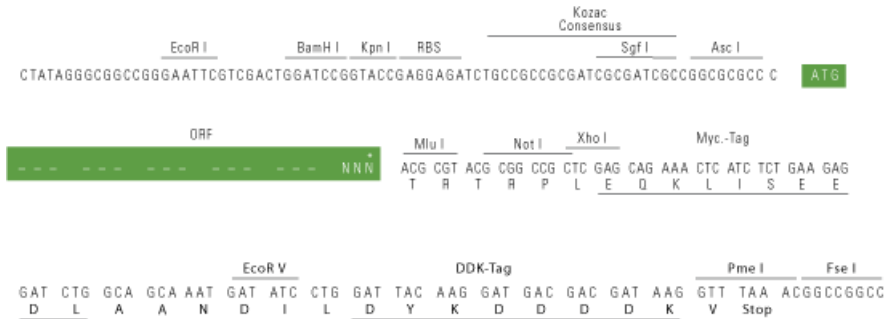
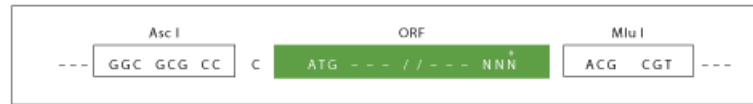
TRTRPLEQKLISEEDLAANDILDYKDDDDKV

Restriction Sites:

AscI-MluI

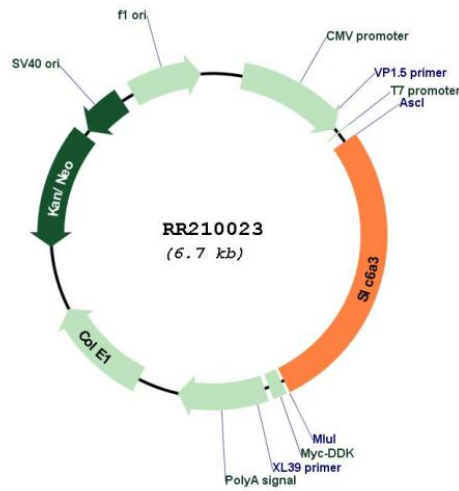
Cloning Scheme:

Cloning sites used for ORF Shuttling:



* The last codon before the Stop codon of the ORF

Plasmid Map:



ACCN:

NM_012694

ORF Size:

1857 bp

OTI Disclaimer:	The molecular sequence of this clone aligns with the gene accession number as a point of reference only. However, individual transcript sequences of the same gene can differ through naturally occurring variations (e.g. polymorphisms), each with its own valid existence. This clone is substantially in agreement with the reference, but a complete review of all prevailing variants is recommended prior to use. More info
OTI Annotation:	This clone was engineered to express the complete ORF with an expression tag. Expression varies depending on the nature of the gene.
Components:	The ORF clone is ion-exchange column purified and shipped in a 2D barcoded Matrix tube containing 10ug of transfection-ready, dried plasmid DNA (reconstitute with 100 ul of water).
Reconstitution Method:	<ol style="list-style-type: none">1. Centrifuge at 5,000xg for 5min.2. Carefully open the tube and add 100ul of sterile water to dissolve the DNA.3. Close the tube and incubate for 10 minutes at room temperature.4. Briefly vortex the tube and then do a quick spin (less than 5000xg) to concentrate the liquid at the bottom.5. Store the suspended plasmid at -20°C. The DNA is stable for at least one year from date of shipping when stored at -20°C.
RefSeq:	NM_012694.2 , NP_036826.1
RefSeq Size:	1985 bp
RefSeq ORF:	1860 bp
Locus ID:	24898
UniProt ID:	P23977
Cytogenetics:	1p11
MW:	68.7 kDa
Gene Summary:	acts as a sodium-dependent dopamine transporter; may play a role in regulation of dopamine metabolism and signaling [RGD, Feb 2006]