

Product datasheet for **RR210016**

Mcm2 (NM_001107873) Rat Tagged ORF Clone

Product data:

Product Type:	Expression Plasmids
Product Name:	Mcm2 (NM_001107873) Rat Tagged ORF Clone
Tag:	Myc-DDK
Symbol:	Mcm2
Vector:	pCMV6-Entry (PS100001)
E. coli Selection:	Kanamycin (25 ug/mL)
Cell Selection:	Neomycin



[View online »](#)

ORF Nucleotide
Sequence:

>RR210016 representing NM_001107873
 Red=Cloning site Blue=ORF Green=Tags(s)

TTTTGTAATACGACTCACTATAGGGCGGCCGGGAATTCGTCGACTGGATCCGGTACCGAGGAGATCTGCC
 GCC**CGCATCGCC**

ATGGCGGAGTCTTCTGAGTCCTTCTCGGCAGCATCTAGCCCTGCCCTCAGCGGCACGGATCAGTGATC
 CCCTCACTTCCAGCCCAGGCCGAGCTCCAGACGTGCTGACGCTTACCTCCAGCCCTGGCAGAGACCT
 CCCCCATTTGAGGATGAGTCCGAGGGGCTGCTGGGCACGGAGGGGCTGTGGAGGAAGAAGAGGATGGA
 GAGGAACCTATTGGTGTGGCATGGAGAGAGACTACCGTCCCATTCCCGAGCTCGATGTCTACGAGGCAG
 AGGGATTGGCCCTGGATGATGAAGATGTGGAGGAGCTGACAGCCAGTCAGAGGGAGGCAGCTGAGCGGGC
 TATGAGGCAGCGGGACCGTGGGCTGGCAGAGGCCTGGTTCGATGCGTCGTGGGCTGCTGTATGACAGC
 GACGAAGAAGATGAGGAGCGGCCTGCCGTAAGCGCCGCCACATAGAGCGTGCCACAGAGGATGGCGAGG
 AGGATGAAGAGATGATTGAGAGTATTGAGAACCTGGAGGACCTCAAGGGCCACTCGGTGCGAGAGTGGGT
 GAGCATGGCAGGGCCAGACTGGAGATCCACCACCGTTTCAAGAACTTCTTGCACCCACGTGGACAGC
 CATGGCCACAACGTCTTCAAGGAGCGTATCAGTGATATGTGCAAAGAGAACCAGGGAGAGTTTGGTGGTAA
 ATTATGAAGACCTGGCAGCCCGGAACATGTGTTGGCATACTTCTACCCGAGGCACCCGCTGAGCTGCT
 GCAGATCTTCGATGAGGCTGCCCTGGAGGTTGTGCTGGCCATGTACCCTAAATATGACCCGATCACCAAC
 CACATTCACGTGCGCATCTCCACCTGCCTCTGGTGGAGGAGCTGCGTTCAGTGGAGCAGCTACACCTGA
 ACCAGCTCATCCGTACCAGCGGTGTGGTGACAGCTGCACTGGAGTCTGCCAGCTCAGCATGGTCAA
 GTATAACTGTAGCAAGTGAACCTTATACTGGGGCCTTTCTGCCAGTCTCAGAACCAGGAGGTGAAGCCT
 GGTTCTGCCCTGAGTGGCAGTCAACTGGGCCCTTTGAGATCAACATGGAGGAGACCATCTATCAGA
 ACCAACGGATCCGCATCCAGGAGAGTCCCGCAAGGTGGCAGCTGGCCGGCTGCCCGTTCCAAGGATGC
 CATCCTCCTTGCTGATCTGGTGGACAGCTGCAAGCCAGGAGACGAGATAGAGCTGACCCGGCATTTACCAC
 AATAATTATGATGGCTCACTTAACACCACCAACGGCTTTCCCGTCTTCCGACCATCATCTGGCCAACC
 ACGTTGCCAAGAAGGACAACAAAGTGGCGTGGGTGAGCTCACTGATGAGGACGTGAAGATGATCACCG
 TCTTTCCAAGGATCAGCAAAATCGGAGAGAAGATCTTTGCCAGCATTGCGCCCTCCATCTATGGGCATGAA
 GACATCAAGAGAGGCCTGGCTCTGGCTCTGTTTGGAGGGGAGCCCAAGAACCAGGTGGAAGCACAAG
 TTCGAGGTGACATCAATGTGCTCCTGTGTGGGACCTGGCACAGCGAAGTCCAGTTCTCAAATACAT
 CGAAGAAATCTAGCCGTGCCATTTTACCACCGGCCAGGTGCGTCAGCCGTGGTCTCACAGCGTAT
 GTTCAGCGGCATCTGTGACGAGAGTGGACCTTAGAGGCTGGAGCCCTGGTTCTGGCCGACCGGGGAG
 TGTGCTCATTGATGAGTTTGACAAGATGAATGACCAGGACAGGACCAGCATCCACGAGGCCATGGAGCA
 GCAAAGCATCTCCATCTCCAAGGCCGGCATCGTTACCTCACTGCAAGCCCGCTGCACCGTATAGCTGCT
 GCCAACCCATAGGAGGCCGCTACGACCCTTCACTGACCTTCTCAGAGAAATGTAGACCTCACAGAGCCCA
 TCATTTCCCGCTTTGATGTCTGTGTGGTGGAGGACACTGTTGATCCTGTTCCAGGATGAGATGCTGGC
 CCGCTTTGTGGTTGGCAGCCACGTGACACACCACCCAGCAACAAGAAGGACGAAGGGCTGACCAACGGT
 GGCACCACAGAGCCAGCCATGCCAACACATACGGTGTGGAGCCCTGCCTCAGGAGGTCTGAAGAAGT
 ATATCATCTATGCCAAGGAACGGTCCGCCAAAGCTCAACCAGATGGACCAGGACAAAGTGGCCAGGAT
 GTACAGCGACTGAGGAAGGAGTCCATGGCAACGGGAGTATTCCATCACAGTGGCAGACATCGAGTCC
 ATGATCCGCATGGCAGAGGCCCATGCACGCATGCACCTGCGAGACTACGTGATGGAAGATGTCAACA
 TGCCATCCGCGTGTGCTGGAGAGCTTATTGACACCCAAAAGTTCAAGTGTGTCGCGCAGCATGGCAA
 GACTTTTGCCCGTATCTCTCCTTCCGTCGGGATAACAATGACCTGCTGCTTTCATACTGAAGCAGTTG
 GTGGCTGAGCAGGTGACATACCAACGTAACCGCTTTGGGGCCCAACAGGACACCATCGAAATACCTGAGA
 AGGACCTGATGGACAAGGCCAGGCAGATCAATATCCACAACCTGTCCGCTTCTACGACAGCGACCTCTT
 CAAAATCAACAAGTTCAGCCGTGACCTGAAACGCAAGCTGATCTACAGCAGTTC

ACGCGTACGCGGCCGCTCGAGCAGAAACTCATCTCAGAAGAGGATCTGGCAGCAATGATATCTGGATT
 ACAAGGATGACGACGATAAGGTTTAA

Protein Sequence: >RR210016 representing NM_001107873
Red=Cloning site Green=Tags(s)

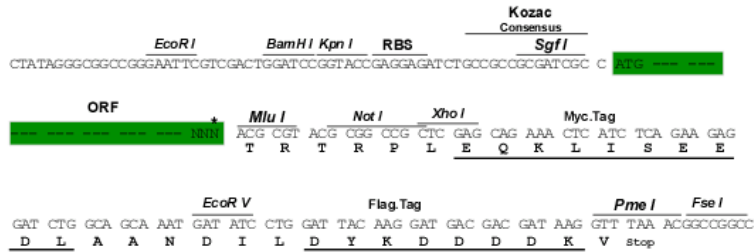
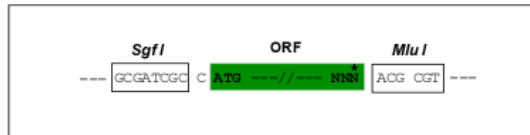
MAESSEFSFAASSPAPQRRRISDPLTSSPGRSSRRADALTSSPGRDLPPFEDESEGLLGTEGPVEEEEDG
EELIGDGMERDYRPIPELDVYEA EGLALDDEVEELTASQREAAERAMRQRDREAGRGLGRMRGLLYDS
DEEDEERPARKRRHIERATEDGEEDEEMIESIENLEDLKGHSVREWVSMAGPRLEIHHRFKNFLRTHVDS
HGHNVFKERISDMCKENRESLVVNYEDLAAREHVLAYFLPEAPAELLQIFDEAALEVVLAMYPKYDRITN
HIHVRI SHLPLVEELRSLRQLHLNQLIRTSGVVTCTGVLPQLSMVKYNC SKCNFILGPFQSQNQEVKP
GSCPECQSTGPFEINMEETIYQNYQRIRIQESPGKVAAGRLPRSKDAILLADLVDSCKPGDEIELTGIYH
NNYDGS LNTTNGFPVFATIILANHVAKKDNKVAVGELTDEDVKMITSLSKDQQIGEKIFASIAPSIYGHE
DIKRLALALFGGEPKNPGGKHKVRGDINVLLCGDPGTAKSQFLKYIEKVSSRAIFTTGQGASAVGLTAY
VQRHPVSREWLEAGALVLADRGVCLIDEFDKMNDQDRTSIHEAMEQQSISISKAGIVTSLQARCTVIAA
ANPIGGRYDPSLTFSENVDLTEPIISRFDVLCVVRDTPVQDEMLARFVVGSHVRHHPNKKDEGLTNG
GTTEPAMPNTYGV EPLPQEV LKKYIYAKERVRPKLNQMDQDKVARMYSDLRKESMATGSIPITVRHIES
MIRMAEAHARMHLR DYVMEDDVNMAIRVMLESFIDTQKFSVMRSMRKTFFARYLSFRRDNDLLLFILKQL
VAEQVTYQRNRF GAQQDTIEIPEKDLMDKARQINIHNL SAFYSDLFKINKFSRDLKRKLILQQF

TRTRPLEQKLISEEDLAANDILDYKDDDDKV

Restriction Sites: Sgfl-MluI

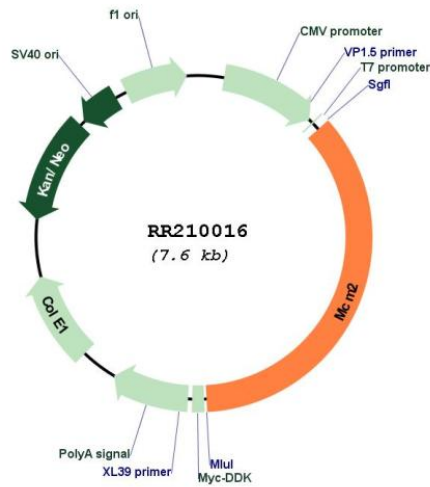
Cloning Scheme:

Cloning sites used for ORF Shuttling:



* The last codon before the Stop codon of the ORF

Plasmid Map:



ACCN:	NM_001107873
ORF Size:	2715 bp
OTI Disclaimer:	The molecular sequence of this clone aligns with the gene accession number as a point of reference only. However, individual transcript sequences of the same gene can differ through naturally occurring variations (e.g. polymorphisms), each with its own valid existence. This clone is substantially in agreement with the reference, but a complete review of all prevailing variants is recommended prior to use. More info
OTI Annotation:	This clone was engineered to express the complete ORF with an expression tag. Expression varies depending on the nature of the gene.
Components:	The ORF clone is ion-exchange column purified and shipped in a 2D barcoded Matrix tube containing 10ug of transfection-ready, dried plasmid DNA (reconstitute with 100 ul of water).
Reconstitution Method:	<ol style="list-style-type: none">1. Centrifuge at 5,000xg for 5min.2. Carefully open the tube and add 100ul of sterile water to dissolve the DNA.3. Close the tube and incubate for 10 minutes at room temperature.4. Briefly vortex the tube and then do a quick spin (less than 5000xg) to concentrate the liquid at the bottom.5. Store the suspended plasmid at -20°C. The DNA is stable for at least one year from date of shipping when stored at -20°C.
RefSeq:	NM_001107873.2 , NP_001101343.2
RefSeq Size:	3261 bp
RefSeq ORF:	2718 bp
Locus ID:	312538
Cytogenetics:	4q34
MW:	102.1 kDa