

Product datasheet for **RR209995**

Rab32 (NM_001108902) Rat Tagged ORF Clone

Product data:

Product Type:	Expression Plasmids
Product Name:	Rab32 (NM_001108902) Rat Tagged ORF Clone
Tag:	Myc-DDK
Symbol:	Rab32
Synonyms:	RGD1559997
Vector:	pCMV6-Entry (PS100001)
E. coli Selection:	Kanamycin (25 ug/mL)
Cell Selection:	Neomycin
ORF Nucleotide Sequence:	>RR209995 representing NM_001108902 Red=Cloning site Blue=ORF Green=Tags(s)

TTTTGTAATACGACTCACTATAGGGCGCCGGAATTCGTCGACTGGATCCGGTACCGAGGAGATCTGCC
GCC**CGATCGCC**

ATGGCGGGCGAGAGACTCGGGCAACAGGGCGAAACGGCCACTGCGGTTCCGGAGACCCGAGAGCACCTCT
TTAAGGTGCTGGTCATCGGCGAGCTCGGCGTGGCAAGACAAGCATCATCAAGCGCTATGTGCCACGCT
CTTCTCCAGAACTACCGCGCCACCATTGGCGTGGACTTCGCCCTCAAAGTCCTCAACTGGGACAGCAGG
ACGCTCGTGCGCTTGACGCTGTGGGACATCGCTGGACAGGAGCGGTTTGGCAACATGACCCGAGTGTACT
ACAAGGAGGCTCTTGGAGCATTTGTAGTCTTTGATATATCGAGAAGTCCACATTTGATGCAGTCTCTAAA
ATGGAAAAATGATCTGGATAGCAAAGTTCATCTTCCCAACGGAAGTCCCATTCTGCTGTCTTCTAGCT
AACAAATGTGACCAGAAGAAGGACAGCAGCCAGAGTCTTCCAGATGAACCAAGTCTGTAAAGACCATG
GCTTCATTGGATGGTTTGAACCTCTGCCAAGGATAACATAAACATCGATGAGGCCACCCGCTTCTAGT
GGAAAACATGCTCGGAACCAAGTCTTCTAGGGAAGAAATCGACATGGACAAAATTAACCTGGTG
GAGGAGCCCCCAGCACAAGCCCAAGTCCCAGTGCTGC

ACGCGTACGCGGCGCTCGAGCAGAACTCATCTCAGAAGAGGATCTGGCAGCAAATGATATCCTGGATT
ACAAGGATGACGACGATAAGGTTTAA



[View online »](#)

Protein Sequence: >RR209995 representing NM_001108902
Red=Cloning site Green=Tags(s)

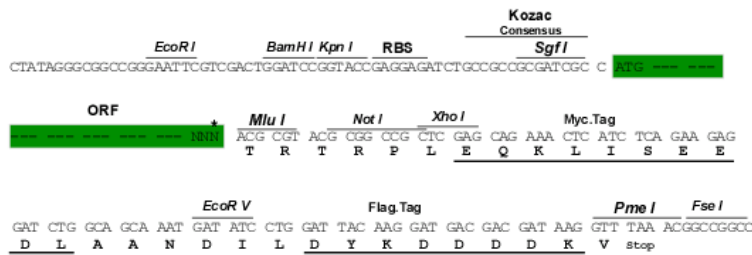
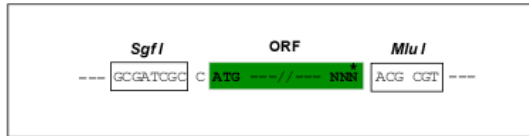
MAGERLGQQGETATAVPETREHLFKVLVIGELGVGKTSIIKRYVHQLFSQNYRATIGVDFALKVLNWDSR
 TLVRLQLWDIAGQERFGNMTRVYKKEALGAFVVDISRSTFDVAVLKWKNLDSKVHLPNGSPIAVLLA
 NKCDQKKDSSQSPSQMNQFCKDHGFIGWFETSAKDNINIDEATRFLVENMLANQQSFPREEIDMDKIKLV
 EEPPTTKPKSQCC

TRTRPLEQKLISEEDLAANDILDYKDDDDKV

Restriction Sites: Sgfl-MluI

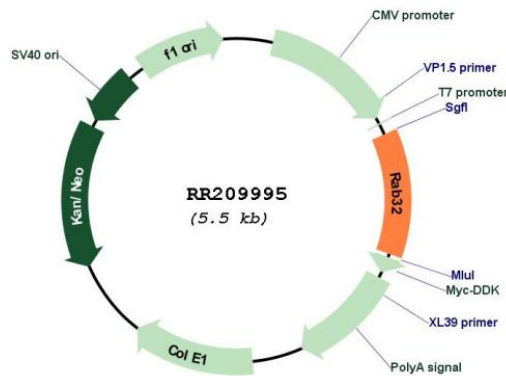
Cloning Scheme:

Cloning sites used for ORF Shuttling:



* The last codon before the Stop codon of the ORF

Plasmid Map:



ACCN: NM_001108902

ORF Size: 669 bp

OTI Disclaimer:	The molecular sequence of this clone aligns with the gene accession number as a point of reference only. However, individual transcript sequences of the same gene can differ through naturally occurring variations (e.g. polymorphisms), each with its own valid existence. This clone is substantially in agreement with the reference, but a complete review of all prevailing variants is recommended prior to use. More info
OTI Annotation:	This clone was engineered to express the complete ORF with an expression tag. Expression varies depending on the nature of the gene.
Components:	The ORF clone is ion-exchange column purified and shipped in a 2D barcoded Matrix tube containing 10ug of transfection-ready, dried plasmid DNA (reconstitute with 100 ul of water).
Reconstitution Method:	<ol style="list-style-type: none">1. Centrifuge at 5,000xg for 5min.2. Carefully open the tube and add 100ul of sterile water to dissolve the DNA.3. Close the tube and incubate for 10 minutes at room temperature.4. Briefly vortex the tube and then do a quick spin (less than 5000xg) to concentrate the liquid at the bottom.5. Store the suspended plasmid at -20°C. The DNA is stable for at least one year from date of shipping when stored at -20°C.
RefSeq:	NM_001108902.1 , NP_001102372.1
RefSeq Size:	2069 bp
RefSeq ORF:	672 bp
Locus ID:	365042
Cytogenetics:	1p13
MW:	25.3 kDa