

Product datasheet for **RR209960**

Hsd17b4 (NM_024392) Rat Tagged ORF Clone

Product data:

Product Type:	Expression Plasmids
Product Name:	Hsd17b4 (NM_024392) Rat Tagged ORF Clone
Tag:	Myc-DDK
Symbol:	Hsd17b4
Synonyms:	MPF-2
Vector:	pCMV6-Entry (PS100001)
E. coli Selection:	Kanamycin (25 ug/mL)
Cell Selection:	Neomycin



[View online »](#)

ORF Nucleotide Sequence:

>RR209960 representing NM_024392
 Red=Cloning site Blue=ORF Green=Tags(s)

TTTTGTAATACGACTCACTATAGGGCGGCCGGGAATTCGTCGACTGGATCCGGTACCGAGGAGATCTGCC
 GCC**CGGATCGCC**

ATGGCTTCGCCTCTGAGTTTCGACGGCGTGTGGTCTGGTCACCGCGCCGGGGAGGTTGGGCAGAG
 CTTATGCCCTGGCTTTTGCAGAAAGAGGAGCATTAGTTGTTGTAATGACTTAGGAGGGACTTCAAAGG
 CGTTGGGAAAGGCTCTTCTGCCGACAGACAAGGTCGTGGAAGAAATAAGAAGGAGAGGCGGAAAGCGGTG
 GCCAATTACGATTCAGTCGAAGCAGGCGAGAAGCTTGTGAAGACAGCACTGGACACATTCGGCAGAATAG
 ATGTTGTGGTGAACAATGCTGGGATCCTGAGGGACCGTCTCTCTAGGATAAGTGATGAAGACTGGGA
 TATAATCAAAGAGTTTCAATTCGCGGGCTCTTCCAAGTGACCCGGCAGCATGGGATCATATGAAGAAG
 CAGAATTATGGAAGAATCATTATGACGGCCTCAGCTTCTGGAATATACGGCAACTTTGGCCAGGCAAAAT
 ATAGTGTGCAAAGCTGGGCTTCTGGGCTCGCCAATACTCTCGTGATTGAAGGCAGGAAGAACAACAT
 TCATTGTAACACCATTGCCCAAACGCTGGGTACGGATGACAGAGACGGTGATGCCAGAAGACCTCGTT
 GAAGCCCTGAAGCCAGAGTATGTGGCACCGCTGGTCTTTGGCTTTGCCATGAGAGCTGTGAGGAAAATG
 GTGGCTTGTGGAGTTGGAGCAGGATGGATTGAAAAATTGCGCTGGGAGAGGACCTGGGAGCCATTGT
 CAGGAAGCGGAATCAGCCATGACTCCCAGGCAGTGAGGGACAACCTGGGTGAAGATCTGTGACTTCAGC
 AATGCCAGCAAGCCGAAGAGCATTCAAGAGTCCACAGGTGGTATAATCGAAGTTTACATAAAAATAGATT
 CAGAAGGAATCTCACAAAATCACACCGGTCAAGTGGCATCTGCAGATGCATCAGGATTTGCTGGCGTCGT
 TGGCCACAAACTCTCTCATTCTTCTCATATACGGAAGTGCAGTGCATTATGTATGCCCTCGGAGTA
 GGAGCTTCAGTCAAAAATCCAAAGGACTTGAAGTTTGTATGAAGGGAGTGTGACTTCTCTGTTTGC
 CTACATTTGGAGTCATTGTCGCTCAGAAGTCTTGATGAGTGGAGGCTTACAGAGAGTTCTCTGGGCTGC
 AATCAACTTTGCAAAGGTTCTTCATGGGAGCAGTACTTGGAGTTGTATAAGCCACTTCCCCGATCAGGG
 GAATTAATAATGTGAAGCAGTTATTGCTGACATCCTGGATAAAGGCTCTGGCATAGTGATTGTTATGGACG
 TCTATTCTATTCTGGCAAGGAACCTTATGCTATAATCAGTTCTCTGTCTTCGTTGTTGGCTCTGGAGG
 CTTTGGTGGAAAACGGACATCAGAAAACTCAAAGCAGCTGTAGCCGTACCAAGTCGGCCTCCAGATGCT
 GTACTGAGAGATACCACTTCACTGAATCAGGCCGCTCTGTACCGCTCAGTGGAGACTCGAATCCTTTAC
 ACATTGACCCGAGCTTTGCGAGCATTGCCGTTTTGAGAAACCCATATTACAGGATTATGTACTTTTGG
 GTTTTCTGCAAGGCATGTTTTACAGCAGTTTTCGGATAATGATGTGTCAAGATTCAGGCCATTAAGGTT
 CGTTTTGCCAAACCAGTGTATCCAGGACAACTCTACAACTGAGATGTGAAGGAAGGAACAGAAATTC
 ATTTTCAAACCAAGGTCCAAGAGACTGGAGACATTGTCATTTCCAATGCATATGTGGATCTTGTCTCTAC
 ATCTGGAGTTTCCGCTCAGACACCTTCTGAGGGTGGAGCACTGCAGAGTGCTCTTGTATTTGGGAAATA
 GGTTCGACGCTCAAGGATGTTGGACGTGAGGTGGTAAAGAAAGTAAATGCTGTATTTGAATGGCATATCA
 CGAAAAATGGGAATGTTGCAGCCAAGTGGACCATGACCTGAAGAACGGCTCTGGAGAGGTTTACCAAGG
 CCCTGCCAAAGGCTCTGCTGACACGACCATCACAATTTCTGATGAGGATTTATGGAAGTGGTCTGGGC
 AAGCTTAACCCACAGAATGCCTTCTTCACTGGCAGACTGAAGGCCGAGGAAACATCATGCTGAGCCAGA
 AGCTACAGATGATTCTGAAAGACTATGCCAAGCTC

ACGCGTACGCGGCCGCTCGAGCAGAACTCATCTCAGAAGAGGATCTGGCAGCAAATGATATCCTGGATT
 ACAAGGATGACGACGATAAGGTTTAA

Protein Sequence: >RR209960 representing NM_024392
 Red=Cloning site Green=Tags(s)

MASPLRFDGRVVLVTGAGGGLGRAYALFAERGAIVVVNDLGGDFKGVGKSSAADKVVEEIRRRGGKAV
 ANYDSVEAGEKL VKTALDTFGRIDVVVNNAGILRDRSFSRISDEDWDIIQRVHLRGSFQVTRAAWDHMKK
 QNYGRIIMTASASGIYGNFGQANYSAAKLGLLGLANTLVIIEGRKNNIHCNTIAPNAGSRMTETVMPEDLV
 EALKPEYVAPLVLWLCHEESCEENGLFEVGAGWIGKLRWERTLGAIVRKRNPMTPEAVRDNWVKICDFS
 NASKPKSIQESTGGIIEVLHKIDSEGISQNHGTQVASADASGFAGVVGHKLPFSSSSYTELQCIMYALGV
 GASVKNPKDLKFVYEGSADFSLPTFGVIVAQKSLMSGGLAEVPLSINFVKVLHGEQYLELYKPLPRSG
 ELKCEAVIADILDKSGIVIVMDVYSYSGKELICYNQFSVFVVGSGGFGGKRTSEKLKAAVAVPSRPPDA
 VLRDTSLNQAALYRLSGDSNPLHIDPSFASIAGFEKPIHLGLCTFGFSARHVLQQFADNDVSRFKAIV
 RFAKPVYPGQTLQTEMWKEGNRIHFQTKVQETGDIVISNAYVDLVPTSGVSAQTPSEGGALQSALVFGEI
 GRRLKDVGREVVKKVNAVFEWHITKNGNVAKWITDLKNGSGEVYQPAKGSADTTITISDEDFMEVVLG
 KLNPNQNAFFSGRLKARGNIMLSQKLQMLKDYAKL

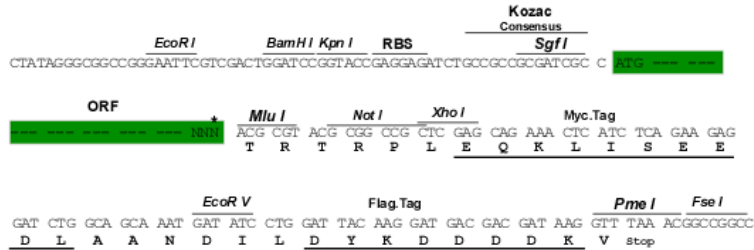
TRTRPLEQKLISEEDLAANDILDYKDDDDKV

Restriction Sites:

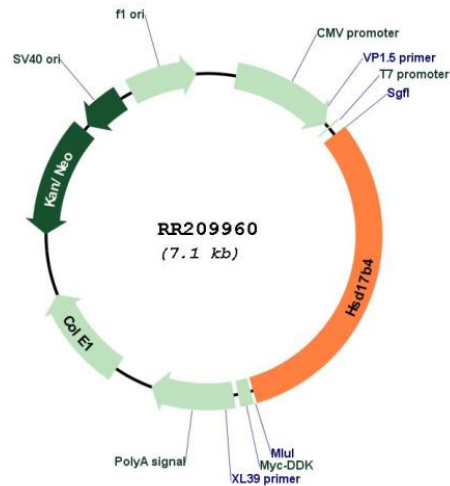
Sgfl-MluI

Cloning Scheme:

Cloning sites used for ORF Shuttling:



* The last codon before the Stop codon of the ORF

Plasmid Map:


ACCN: NM_024392

ORF Size: 2205 bp

OTI Disclaimer: The molecular sequence of this clone aligns with the gene accession number as a point of reference only. However, individual transcript sequences of the same gene can differ through naturally occurring variations (e.g. polymorphisms), each with its own valid existence. This clone is substantially in agreement with the reference, but a complete review of all prevailing variants is recommended prior to use. [More info](#)

OTI Annotation: This clone was engineered to express the complete ORF with an expression tag. Expression varies depending on the nature of the gene.

Components: The ORF clone is ion-exchange column purified and shipped in a 2D barcoded Matrix tube containing 10ug of transfection-ready, dried plasmid DNA (reconstitute with 100 ul of water).

Reconstitution Method:

1. Centrifuge at 5,000xg for 5min.
2. Carefully open the tube and add 100ul of sterile water to dissolve the DNA.
3. Close the tube and incubate for 10 minutes at room temperature.
4. Briefly vortex the tube and then do a quick spin (less than 5000xg) to concentrate the liquid at the bottom.
5. Store the suspended plasmid at -20°C. The DNA is stable for at least one year from date of shipping when stored at -20°C.

RefSeq: [NM_024392.2](#), [NP_077368.2](#)

RefSeq Size: 2602 bp

RefSeq ORF: 2208 bp

Locus ID: 79244

UniProt ID: [P97852](#)
Cytogenetics: 18q11
MW: 79.4 kDa
Gene Summary: a 17 beta-hydroxysteroid dehydrogenase type IV involved in cholesterol metabolism [RGD, Feb 2006]