

Product datasheet for **RR209906**

Cwc25 (NM_001108295) Rat Tagged ORF Clone

Product data:

Product Type: Expression Plasmids
Product Name: Cwc25 (NM_001108295) Rat Tagged ORF Clone
Tag: Myc-DDK
Symbol: Cwc25
Synonyms: Ccdc49; RGD1305258
Mammalian Cell Selection: Neomycin
Vector: pCMV6-Entry (PS100001)
E. coli Selection: Kanamycin (25 ug/mL)
ORF Nucleotide Sequence: >RR209906 representing NM_001108295
 Red=Cloning site Blue=ORF Green=Tags(s)

CTATAGGGCGCCGGGAATTCGTCGACTGGATCCGGTACCGAGGAGATCTGCCGCCGCGATCGCCGGCGC
 GCCC

ATGGGAGGCGGAGACCTGAACCTGAAGAAGAGCTGGCACCCGAGACCCTTCGCAATGTGGAGAAAGTGT
 GGAAGGCGGAGCAGAAACATGAAGCGGAGAGGAAAAAGATTGAGGAGTTGCAGCGAGAGCTTCGAGAGGA
 GCGAGCTCGGGAGGAGATGCAGCGCTACGCTGAGGATGTCGGGGTGTCAAGAAAAAGAAGAAAAGTTG
 GATTGGATGTACCAAGGCCAGGTGGCATGGTGTAGCCGCGATGAGTACCTGCTGGGGCGCCCATGACA
 AGTATGTTTTTGAAGATGGAGGAGAGGGAGGCCGGTCTCTTCTGAGACAGGACTCCTCCCAGGCTC
 AATCTTCGCCCGTCGGGTGCTAATTCTTTCTTACATGGCCAGCAAAATCCGGGAAGACCTCTCTTC
 ATCATAAGGAAGAAAGAGGAGGAGAAAAAAGAGAAGTACTGAACAACCTGTGAAAATGAGGAAAATCA
 AAGAGCTGTTGCAATGAGTCTTGAAGAAAAAGAGAAGAAGAAGAAGGAGAAGAAGAAGACACAG
 GAAACACAACACAGAAGCTCAAGCAGCGATCGCTCCAGCAGCGAGGATGAGCAGAGCCATGGCCGATCT
 CAAAAGAAGATGGCAAAATTCCTTTCTGTTTTGTCCAAGTCCCTGGATATGGCTTACAGGTGAGGGACT
 CTGACCGGAACCGGGCTGCAGGGTCTCTGGGTGAACAAGGGCAGTAAAGAACCATTCCCGGTCAAG
 CTCCTCCCCCGCCAGGCATGCCAGCAGGAAAAGCACCAAGGAAGAGAGATCCCGGACAGGAGGTCTCGA
 TCCCCCGCAGAAAGTCACTGTCCCCAAGGCCAGCAACAGCACACCTTAAGGCAACAGGAAGGAGA
 GAGACAGCCCGTACCTAAAAAGGAGGTCTACCAGCGCGCATGCTTCTGGGTACACCAGAAAACCTCTC
 AGCGGAGGAACTAGAGCGGAAACGGCAGGAGATGATGGAAGTCCCAAGTGGAGGAGGAAGAGAGGCTC
 AACACCCTCAAGAGGCACGCCAAGGAAGATGAGCAGGAGCACAGGCTGGAGAGGTTGGACTCTCGGTCCG
 GCAAGTTCATCCACCGCATGAAGCTGGAGAGCGGTCCACCTCTTCCCTGGAGGACCGGGTCAAGCGCAA
 CATCCATTCTCTGCAGCGGACATCGATGGCTCTGGAGAAGAACTTCATGAGAAGA

ACGCGTACGCGGCCGCTCGAGCAGAACTCATCTCAGAAGAGGATCTGGCAGCAATGATATCCTGGATT
 ACAAGGATGACGACGATAAGGTTTAA



[View online »](#)

Protein Sequence: >RR209906 representing NM_001108295
 Red=Cloning site Green=Tags(s)

MGGDDLNLKKSWHPQTLRNVEKVKAEQKHEAERKKIEELQRELREERAREEMQRYAEDVGAVKKKEEKL
 DWMYQPGGMVSRDEYLLGRPIDKYVFEKMEEREAGCSSETGLLPGSIFAPSGANSLDMASKIREDPLF
 IIRKKEEEKKREVLNNPVKMRKIKELLQMSLEKKEKKKKKKKKHRKHKHRSSSSDRSSSEDEQSHGRS
 QKKMANSFPVLSKVPGYGLQVRSDRNQGLQGSGLGEQRAVKNHSRSSSSPARHASRKSTKEERSRDRRSR
 SPGRKSLSPRPSKQHTSKANRKERDSSPKKEVYQRRHASGYTRKLSAEELERKQEMMENAKWREEERL
 NTLKRHAKEDQEHLRLRSDRSKGF IHRMKLESASTSSLEDVYKRNIIHSLQRTSMALEKNFMRR

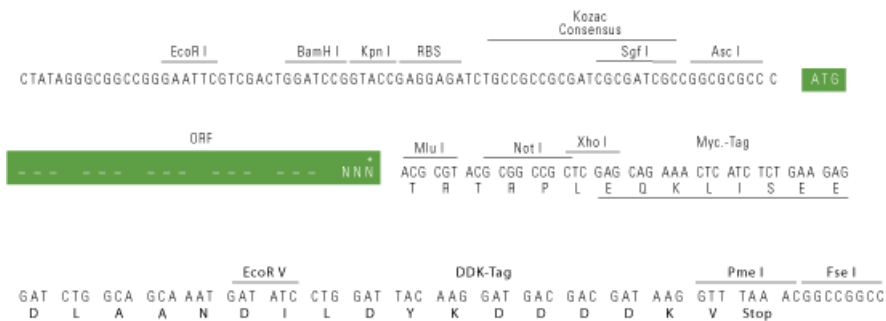
TRTRPLEQKLISEEDLAANDILDYKDDDDKV

Restriction Sites:

Ascl-MluI

Cloning Scheme:

Cloning sites used for ORF Shuttling:



* The last codon before the Stop codon of the ORF

ACCN: NM_001108295

ORF Size: 1245 bp

OTI Disclaimer: The molecular sequence of this clone aligns with the gene accession number as a point of reference only. However, individual transcript sequences of the same gene can differ through naturally occurring variations (e.g. polymorphisms), each with its own valid existence. This clone is substantially in agreement with the reference, but a complete review of all prevailing variants is recommended prior to use. [More info](#)

OTI Annotation: This clone was engineered to express the complete ORF with an expression tag. Expression varies depending on the nature of the gene.

Components: The ORF clone is ion-exchange column purified and shipped in a 2D barcoded Matrix tube containing 10ug of transfection-ready, dried plasmid DNA (reconstitute with 100 ul of water).

Reconstitution Method:

1. Centrifuge at 5,000xg for 5min.
2. Carefully open the tube and add 100ul of sterile water to dissolve the DNA.
3. Close the tube and incubate for 10 minutes at room temperature.
4. Briefly vortex the tube and then do a quick spin (less than 5000xg) to concentrate the liquid at the bottom.
5. Store the suspended plasmid at -20°C. The DNA is stable for at least one year from date of shipping when stored at -20°C.

RefSeq: [NM_001108295.1](#), [NP_001101765.1](#)

RefSeq Size: 3195 bp

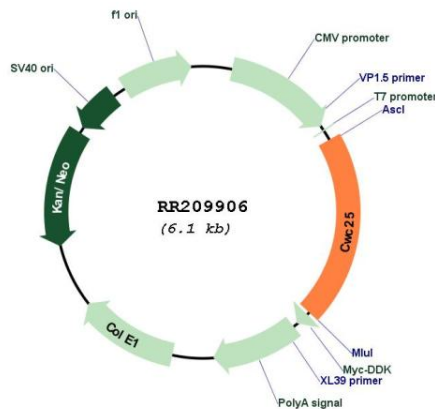
RefSeq ORF: 1248 bp

Locus ID: 360613

Cytogenetics: 10q31

MW: 48.7 kDa

Product images:



Circular map for RR209906