

Product datasheet for **RR209905**

Rhot2 (NM_181823) Rat Tagged ORF Clone

Product data:

Product Type:	Expression Plasmids
Product Name:	Rhot2 (NM_181823) Rat Tagged ORF Clone
Tag:	Myc-DDK
Symbol:	Rhot2
Synonyms:	Miro2
Vector:	pCMV6-Entry (PS100001)
E. coli Selection:	Kanamycin (25 ug/mL)
Cell Selection:	Neomycin



[View online »](#)

ORF Nucleotide Sequence:

>RR209905 representing NM_181823
 Red=Cloning site Blue=ORF Green=Tags(s)

TTTTGTAATACGACTCACTATAGGGCGGCCGGGAATTCGTCGACTGGATCCGGTACCGAGGAGATCTGCC
 GCC**CGGATCGCC**

ATGAGGCGCGACGTGCGCATCTGCTGCTGGCGAGGCCAGGTGGGAAGACTTCTCTGATCCTGTGCG
 TGGTCGGCGAGGAGTTTCCCGAGGAGTCCCTGCCCGCGCGGAGGAGATAACCATCCCCGCGACGTCAC
 CCCAGAGAAGGTGCCACCCATATCGTGGATTACTCAGAAGCGGAGCAGACAGAGGAGAACTTCAGGAG
 GAGATCCACAAGGCAAACGTGGTGTGTGGTGTACGATGTGTCTGAGGAAGCCACCATTGAGAAGATCC
 GAACCAAGTGGATTCCCCTCGTGAATGGCAGGACGGCAACAGGGCCAGGTTGCCCATCATCCTGGTAGG
 CAATAAGTCAGACCTGCGGCCAGGGAGTACCATAGAGGCTGTGTTGCCATTATGAGCCAGTTTCTGAG
 ATAGAGACCTGTGTGGAGTGTCTGCCAAGCACTTGAGGAATATCTCAGAGCTGTTCTACTATGCCCAGA
 AGGCTGTTCTGCATCCCACCGCTCCCCTTATGACCCTGAGGCCAAACAGTTAAGGCTGCCTGCGCCCA
 GGCACTCACACGCATCTCAGGCTGTCGGATCAGGACCTAGACCACGCACTCAGCGACAAGGAGCTCAAT
 GCCTTCCAGAAGTCTGCTTTGGCCATCCTCTGGCCCCACAAGCCCTGGAGGATGTAAAGAGGGTAGTGT
 GCAAGAATGTGGCAGGTGGTGTGCAAGATGACCGACTGACCCTGGAAGGCTTCTCTTCTGAACACACT
 TTTTCATCCAGCGTGGCCGGCATGAGACTACGTGGACCATCCTACGGCGCTTTGGTTACAGTGACTCGCTG
 GAGCTGACTCCTGACTACCTCTGTCCACCGCTCTACGTACCCCTGGCTGCAGCACCGAGCTCAACCATC
 GTGGCTACCAGTTTGTGCAGCGGGTGTGAGAAGCATGATCAGGACCATGATGGTGTCTCTCACCCAC
 GGAAGTACAGAGTCTCTCAGCGTGTCTCAGTTGCTCCGTGGGGCCCTGAACTTTACACACAGTCCCC
 ACTGAGGCTGGCTGTCTGCTTGGCTACCTGGGTTACCTACCTCTGTGAGCAGGACTCACAGGCACAGGC
 AGCACTGCCTTGCCCATCTTGGCTACCTGGGTTACCTACCTCTGTGAGCAGGACTCACAGGCACAGGC
 TATCACAGTTACCCGCGAGAAGAGACTGGACCAGGAGAAAAGGGCAAACACAGCGCAGCGTCTCATGTGT
 AAGGTGTTGGGAGCCCGAGGAGTGGCAAGTCCGCTTCTTGCAGGCCTTCTCGGCCACAGCCTTGGGG
 AAGCCAGGGACAGGGACGCCCTGAGAAATTGCCACGCATACCATCAATACAGTGCGGGTGCAGCGGACA
 GGAAAAGTACCTGATTCTGTGTGAAGTGAATGCTGACAGCCTGCTGGACACCTCTCTAGACACTACCTGT
 GATGTCGCTGCTTAATGTTTGCAGCAGTGACCCCGAGACCTTCGTGCAGTGTGCTACCATCTACAAGC
 GTTATTACATGGATGGGACAGACCCCTGCCTTTATCTCCTCAAAGCTGATCTCCTGAAGGTGTTGC
 CCCACCAGGCTATCACCAGCTGAGTTCTGCCGTAGGCACCGGCTGCCAGCCCCGGCCTATTCTCCTGC
 TTGGGACCAGCACAGTCCAGCATAGATGTCTTTACCAACTTGCTACTATGGCCACTTTCCACACCTGG
 CGCACACAGAGCTGCACCCACCCCTTCTGGCTCCGAGGCGTGTGGTGGCTGTTGGGACCGCGGTGGC
 TGCTGTCTTAGCTTCTCACTATATAGGGTCTAGTGAAGAGCCGA

ACGCGTACGCGGCCGCTCGAGCAGAACTCATCTCAGAAGAGGATCTGGCAGCAAATGATATCCTGGATT
 ACAAGGATGACGACGATAAGGTTTAA

Protein Sequence:

>RR209905 representing NM_181823
 Red=Cloning site Green=Tags(s)

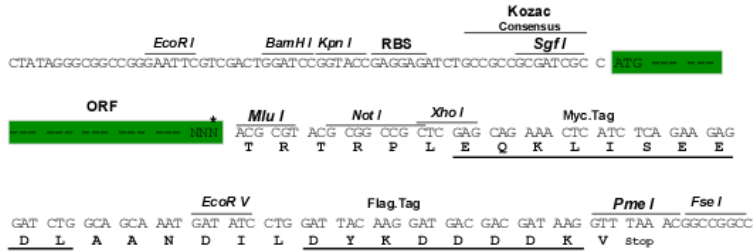
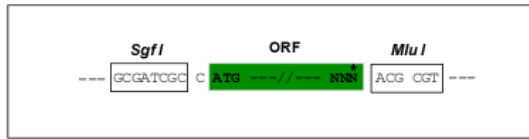
MRRDVRILLLGEAQVVKTSLLSLVGEFFPEEVPARAEEITIPADVTPPEKVPHTHIVDYSEAEQTEELQE
 E.IHKANVVCVVYDVSEETIEKIRTKWIPLVNGRTATGPRLPIILVGNKSDLRPGSTIEAVLPIMSOFPE
 IETCVECSAKHLRNISELFYYAQKAVLHPTAPLYDPEAKQLRPACAQALTRIFRLSDQDLHALSDKELN
 AFQKSCFGHPLAPQALEDVKRVVCKNVAGGVQDDRLTLEGFLFLNTLFIQRGRHETTWTILRRFGYSDSL
 ELTPDYLCPPLYVPPGCSTELNHRGYQFVQRVFEKHDQDHDGVLSPTELESLSVSVAPWGPPELLHTVP
 TEAGCLSLRGLCQWTLVTYLDVQHCLAHLGYLGYPTLCEQDSQAQAITVTREKRLDQEKGTQRSVLMC
 KVLGARGVGKSAFLQAFLGHSLGEARDRDAPEKLPHTHTINTVVRVSGQEKYLILCEVNADSLDLSLDTTC
 DVACLMDSSDPETFVQCATIYKRYMDGQTPCLFISSKADLPEGVAPPGLSPAIEFCRRHRLPAPASFSC
 LGPAQSSIDVFTQLATMATFPHLAHTELHPTPFWLRGVLVAVGTAVAVLSFSLYRVLVKSR

TRTRPLEQKLISEEDLAANDILDYKDDDDKV

Restriction Sites: SgfI-MluI

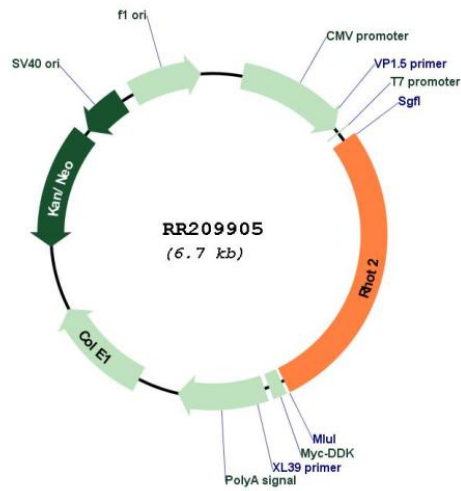
Cloning Scheme:

Cloning sites used for ORF Shuttling:



* The last codon before the Stop codon of the ORF

Plasmid Map:



ACCN: NM_181823

ORF Size: 1866 bp

OTI Disclaimer:	The molecular sequence of this clone aligns with the gene accession number as a point of reference only. However, individual transcript sequences of the same gene can differ through naturally occurring variations (e.g. polymorphisms), each with its own valid existence. This clone is substantially in agreement with the reference, but a complete review of all prevailing variants is recommended prior to use. More info
OTI Annotation:	This clone was engineered to express the complete ORF with an expression tag. Expression varies depending on the nature of the gene.
Components:	The ORF clone is ion-exchange column purified and shipped in a 2D barcoded Matrix tube containing 10ug of transfection-ready, dried plasmid DNA (reconstitute with 100 ul of water).
Reconstitution Method:	<ol style="list-style-type: none">1. Centrifuge at 5,000xg for 5min.2. Carefully open the tube and add 100ul of sterile water to dissolve the DNA.3. Close the tube and incubate for 10 minutes at room temperature.4. Briefly vortex the tube and then do a quick spin (less than 5000xg) to concentrate the liquid at the bottom.5. Store the suspended plasmid at -20°C. The DNA is stable for at least one year from date of shipping when stored at -20°C.
RefSeq:	NM_181823.1 , NP_861544.1
RefSeq Size:	2781 bp
RefSeq ORF:	1869 bp
Locus ID:	287156
UniProt ID:	Q7TSA0
Cytogenetics:	10q12
MW:	69.2 kDa
Gene Summary:	Mitochondrial GTPase involved in mitochondrial trafficking. Probably involved in control of anterograde transport of mitochondria and their subcellular distribution (By similarity). [UniProtKB/Swiss-Prot Function]