

Product datasheet for **RR209839**

Fmr1 (NM_052804) Rat Tagged ORF Clone

Product data:

Product Type:	Expression Plasmids
Product Name:	Fmr1 (NM_052804) Rat Tagged ORF Clone
Tag:	Myc-DDK
Symbol:	Fmr1
Synonyms:	FMRP
Vector:	pCMV6-Entry (PS100001)
E. coli Selection:	Kanamycin (25 ug/mL)
Cell Selection:	Neomycin



[View online »](#)

ORF Nucleotide Sequence:

>RR209839 representing NM_052804
 Red=Cloning site Blue=ORF Green=Tags(s)

TTTTGTAATACGACTCACTATAGGGCGGCCGGAATTCGTCGACTGGATCCGGTACCGAGGAGATCTGCC
 GCC**GCGATCGCC**

ATGGAGGAGCTGGTGGTGAAGTGC GGCTCCAATGGCGCTTTCTACAAGGCATTTGTA AAAAGATGTC
 ATGAAGATTCTATAACAGTTGCTTTGAAAACAACTGGCAGCCAGAGAGACAGATTCTTTCCATGATGT
 GAGATTCCACCACCTGTAGGTTATAATAAAGATATAAACGAAAGTGATGAAGTTGAGGTTTATCCAGA
 GCAAAATGAAAAGAGCCTTGCTGTTGGTGGTTAGCTAAAGTGAGGATGATAAAGGGTGAGTTTATGTGA
 TAGAATATGCAGCATGTGATGCTACATACAATGAAATTGTCACAATTGAGCGTCTACGATCTGTTAATCC
 CAACAACTGCTACAAAAGATACTTTCCATAAGATCAAGCTGGAAGTGCCAGAAGATTTACGACAAATG
 TGTGCCAAAGAATCGGCACATAAGGATTTAAAAAGGCAGTTGGTGCCTTCTCTGTAACCTATGATCCAG
 AAAATTATCAGCTGGTAATTTTGTCCATCAATGAAGTCACCTCAAAGCGAGCCACATGTTAATTGACAT
 GCACTTTGCAAGTCTGCGCACCAAGTTGTCTTATACTGAGAAATGAAGAAGCCAGTAAACAACTGGAG
 AGTTCAAGGCAGCTTGCCTCAAGATTTTCAAGAGTTTATCGTACGAGAAGATCTGATGGGTCTAGCTA
 TTGGTACTCATGGTGCTAATATTCAGCAAGCTAGAAAAGTACCTGGGGTCACTGCTATTGATTTAGATGA
 GGATACCTGCACATTTTATTTATGGAGAGGATCAAGATGCAGTCAAAAAGGCTAGAAGCTTTCTGGAA
 TTTGCTGAAGATGTCATACAAGTCCACGAAATTTAGTAGGCAAAGTAAATAGGAAAAATGGAAAAGTGA
 TTCAAGAGATTGTGGACAAGTCAAGGATTTGTGAGGGTGAAGATCGAAGCTGAAAATGAGAAAAGTGTCCC
 ACAAGAAGAGGAAAATTTGCCACCAAGTCCCTACCTTCCAATAATTCAAGGGTTGGATCTAATTCCTCT
 GAAGAAAAGAAACATTTAGATACAAAGGAAAACACCCATTTTCTCAACCTAACAGTACAAAAGTCCAGA
 GGGGGATGGTACCATTTGTTTTGTGGAAACAAAAGACAGCATGCTAATGCCACTGTTCTTTTGGATTA
 TCACCTGAACACTTAAAGGAAGTAGACCAGTTGCGTTTTGGAGAGATTACAAATTGATGAGCAGTTGCGA
 CAAATTGGAGCTAGTTCTAGACCACCACCAATCGTACAGATAAAGGAAAAGGCTATGTGACTGATGATG
 GTC AAGGAATGGGTGAGGTAGTAGACCTTACAGAAAATAGGGGGCACGGCAGACGCGGTCTGGATATAC
 TTCAGAACTGACACAGAGACGAACTCAGTGATTGGTCAATAGCTCCAACAGAGGAAGAGAGGGAGAGC
 TTCCTGCGCAGAGGAGACGGACGGCGGCGTGGAGGAGCGGAAGAGGACAAGGAGGAAGAGGAAGAGGAG
 GAGTTTTCAAAGGAAATGACGATCATTCCGAAACAGATAATCGTCCACGTAATCCAAGAGAGACTAAAGG
 AAGAACAATGATGGATCCCTGCAGAGCACCTCCAGTGAAGGGAGCCGGTGCACACGGGAAAAGATCGG
 AACCAAGAAGGAAAAGCCAGACAGCGTGGATGGGCTGCAACCACTCGTGAATGGAGTACCC

ACGCGTACGCGGCCGCTCGAGCAGAAACTCATCTCAGAAGAGGATCTGGCAGCAAATGATATCCTGGATT
 ACAAGGATGACGACGATAAGGTTTAA

Protein Sequence:

>RR209839 representing NM_052804
 Red=Cloning site Green=Tags(s)

MEELVVEVRGNSGAFYKAFVKDVHEDSITVAFENNWQPERQIPFHDVRFPPPVGVYKNDINESDEVEVYSR
 ANEKEPCCWLLAKVRMIKGEFYVIEYAACDATYNEIVTIERLRVSNPNKPATKDTFHKIKLEVPEDLRQM
 CAKE SAHKDFKKAVGAFSVTYDPENYQLVILSINEVTSKRAHMLIDMHFRSLRKLKSLILRNEEASKQLE
 SSRQLASRFHEQFIVREDLMGLAIGTHGANIQARKVPGVTAIDLDEDTCTFHIIYGEDQDAVKKARSFLE
 FAEDVIQVPRNLVGKVIKNGKLIQEIVDKSGVVRVRIEAENEKSVPQEEENLPPSSLPNSNRVGSNS
 EEKHLDTKENTHFSQPNSTKVQRGMVPFVFGTKDSIANATVLLDYHLNLYLKEVDQLRLERLQIDEQLR
 QIGASSRPPPNRTDKEKGYVTDGQGMGRGSRPYRNRHGRGPGYTESDHRDELSDWLAPTEEERES
 FLRRGDGRRRGGGRGQGRGRGGGFKGNDHSRTDNRPRNPRETKGRTTDGSLQSTSSEGSRLRTGKDR
 NQKKEKPDSDVGLQPLVNGVP

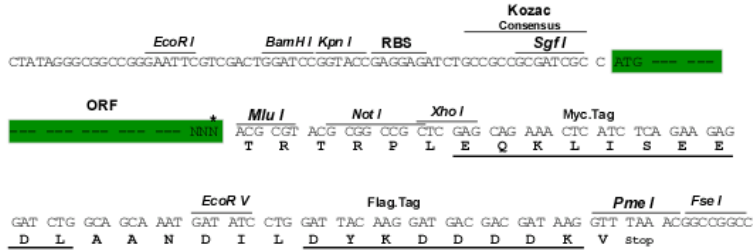
TRTRPLEQKLISEEDLAANDILDYKDDDDKV

Restriction Sites:

Sgfl-MluI

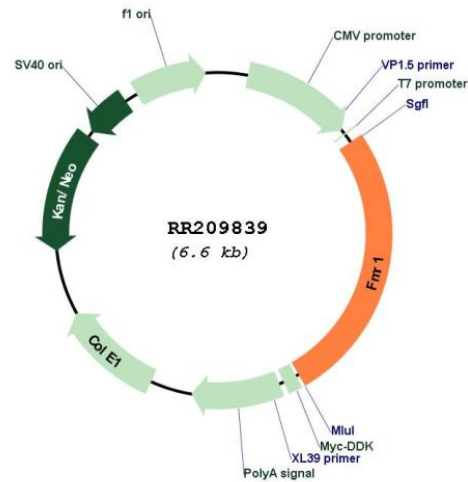
Cloning Scheme:

Cloning sites used for ORF Shutting:



* The last codon before the Stop codon of the ORF

Plasmid Map:



ACCN: NM_052804
 ORF Size: 1743 bp

OTI Disclaimer:	The molecular sequence of this clone aligns with the gene accession number as a point of reference only. However, individual transcript sequences of the same gene can differ through naturally occurring variations (e.g. polymorphisms), each with its own valid existence. This clone is substantially in agreement with the reference, but a complete review of all prevailing variants is recommended prior to use. More info
OTI Annotation:	This clone was engineered to express the complete ORF with an expression tag. Expression varies depending on the nature of the gene.
Components:	The ORF clone is ion-exchange column purified and shipped in a 2D barcoded Matrix tube containing 10ug of transfection-ready, dried plasmid DNA (reconstitute with 100 ul of water).
Reconstitution Method:	<ol style="list-style-type: none">1. Centrifuge at 5,000xg for 5min.2. Carefully open the tube and add 100ul of sterile water to dissolve the DNA.3. Close the tube and incubate for 10 minutes at room temperature.4. Briefly vortex the tube and then do a quick spin (less than 5000xg) to concentrate the liquid at the bottom.5. Store the suspended plasmid at -20°C. The DNA is stable for at least one year from date of shipping when stored at -20°C.
RefSeq:	NM_052804.1 , NP_434691.1
RefSeq Size:	4190 bp
RefSeq ORF:	1746 bp
Locus ID:	24948
UniProt ID:	Q80WE1
Cytogenetics:	Xq37
MW:	65.6 kDa
Gene Summary:	may play a role in mRNA trafficking and localization [RGD, Feb 2006]