

Product datasheet for **RR209835**

Patz1 (NM_001107231) Rat Tagged ORF Clone

Product data:

Product Type:	Expression Plasmids
Product Name:	Patz1 (NM_001107231) Rat Tagged ORF Clone
Tag:	Myc-DDK
Symbol:	Patz1
Synonyms:	Zfp278; Znf278
Vector:	pCMV6-Entry (PS100001)
E. coli Selection:	Kanamycin (25 ug/mL)
Cell Selection:	Neomycin



[View online »](#)

ORF Nucleotide
Sequence:

>RR209835 representing NM_001107231
Red=Cloning site Blue=ORF Green=Tags(s)

TTTTGTAATACGACTCACTATAGGGCGGCCGGGAATTCGTCGACTGGATCCGGTACCGAGGAGATCTGCC
GCC**CGGATCGCC**

ATGGAGCGGGTCAACGACGCTTCTTGGCGTCCGTCGGGCTGCTACACCTACCAGGTGAGCAGACACAGTA
CGGAGATGCTGCACAACCTGAACCAACAACGCAAAAACGCGGGCGCTTTTGGCAGCTGCTCCTACGGT
AGGCGATGAGAGCTTCCAGCGCACCGCTGTACTGGCTGCCTGCAGCGAGTACTTTGAGTCTGTGTT
AGCGCCAGTTAGGCGACGGCGGAGCTGCAGACGGTGGTCTGCTGATGTGGAGGCGCGGCGGGCTC
CAGGCGCGGGGCTGGAGGCAGCCGGAAGTGGAGATGCACACCATCAGTTCCAAAGTGTTCGGAGACAT
CCTGGACTTCGTTACACGTCCGAATCGTTGTGCGCCTAGAGAGCTTCCCCGAGCTCATGACGGCCGCC
AAGTTCCTGCTGATGAGGTGGTATCGAGATCTGCCAGGAAGTAAACAAACAGTCCAACGTGCAGATCC
TGGTGGCCCTGCCGGGCTGATATCATGCTCTTTCGCCCTCCTGGGACTTCTGACTTGGCTTCCCTTT
GGACATGACCAACGGGGCAGCCATGGCAGCCAACAGTAATGGTATTGCTGGCAGTATGCAGCCCGAGGAA
GAGGCTGCCAGGGCCACAGGTGCTGCTATTGCGGGCAAGCTTCCCTGCCTGTGTACCTGGGGTGGACA
GATTGCCCATGGTGGCTGGACCTCTATCCCCCAACTACTGACTTCTCCATTCCCCAATGTGGCATCCAG
TGCACCTCCTCTGACTGGCAAGCGAGGCCGGGGACGCCCCAGGAAGGCCAACCTGCTGGACTCCATGTTT
GGGTCTCCAGGGGCTTGGGGAAGCAGGCATCCTTCCATGTGGCCTGTGCGGTAAGGTGTTCACTGACG
CCAACCGGCTCCGGCAACATGAGGCCAGCAGCGGCTCACAAGCCTCCAGTTGGGCTATATCGATCTTCC
TCCTCAAAGGCTGGGTGAGAATGGGTTACCCATCTCCGAGGACCCGACGGCCCCAGAAAAAGGAGCCGG
ACCAGGAAGCAGGTGGCTTGTGAGATCTGTGGCAAGATCTTTCGTGACGTATACCATCTCAACCGCATA
AGCTGTCCACTCTGGGAGAAGCCGTAATCGTCCCGGTGTGTGGTCTGCGGTTCAAGAGAAAAGACCG
CATGTGCTACCATGTGAGGTCCCATGATGGGTCAGTGGGCAAACCGTACATCTGCCAGAGCTGTGGGAAA
GGCTTCTCCAGGCCAGATCACTTGAATGGACATATCAAGCAGGTGCACACGTCTGAGCGCCCTCACAAAT
GTCAGACCTGCAATGCCTCCTTTGCCACTCGAGACCGCCTGCGCTCCACCTGGCCTGCCATGAAGACAA
GGTGCCCTGCCAGGTGTGCGGAAAGTACTTGGGGCAGCGTACATGGCTGACCACCTGAAGAAGCACAGC
GAGGGGCCAGCAACTTCTGCAGTATCTGTAACCGAGAAGGCCAGAAATGCTCACATCAGGATCTGATTG
AGAGCTCTGATTCTATGGTGACCTCTCAGACGCCAGTACCTGAAGACTCCAGAGAAACAGAGTGCCAA
CGGCTCTTCTCCTGCGACATGGCAGTCCCTAAAAACAAAATGGAGTCTGACGGGAGAAGAAGTACCCA
TGCCCTGAATGTGGGAGCTTCTTCGGTCTAAGTCTACTTGAACAAACACATCCAGAAGGTGCATGTCC
GTGCCCTTGGGGTCCCTTGGGGACCTGGGCCCTGCCCTTGGTTACCTTTCTCTCCCCAGCAGAACAT
GTCTCTTCTCGAGTCTTTGGATTTAGATTGTTGAGTACGCGTTTGCATCATCTTTAGTGGATCCTGAG
GTGGACCAGCAGCCCATAGGGCCTGAAGGGAAG

ACGCGTACGCGGCCGCTCGAGCAGAAACTCATCTCAGAAGAGGATCTGGCAGCAAATGATATCCTGGATT
ACAAGGATGACGACGATAAGGTTTAA

Protein Sequence: >RR209835 representing NM_001107231
 Red=Cloning site Green=Tags(s)

MERVNDASCGPSGCYTYQVSRHSTEMLHNLNQQRKNGGRFCVLLRVGDESFPAHRAVLAACSEYFESVF
 SAQLGDGGAADGGPADVGGAAAAPGGGAGGSRELEMHTISSKVFGDILDFAYTSRIVVRLSEFPELMTAA
 KFLLMRSVIEICQEVIKQSNVQILVPPARADIMLFRPPGTSDLGFPLDMTNGAAMAANSNGIAGSMQPEE
 EAARATGAAIAGQASLPVLPVDRILPMVAGPLSPQLLTSPFPNVASSAPPLTGKRGRGRPRKANLLDSMF
 GSPGGLREAGILPCGLCGKVFVDANRLRQHEAQHGVTSLQLGYIDLPPRRLGENGLPISEDPDGPKRSR
 TRKQVACEICGKIFRDVYHLNRHKLSHSGEKPYSCPVCGLRFKRKDRMSYHVRSHDGSVGPYICQSCGK
 GFSRPDHLNGHIKQVHTSERPHKCQTCNASFATRDLRSHLACHEDKVPQVCGKYLRAAYMADHLKKHS
 EGPSNFCICNREGQKCSHQDLIESSDSYGDLSDASDLKTPKQSANGSFSCDMAVPKNKME SDGEKKYP
 CPEGCSFFRSKSYLNKHIQKVHVRALGGPLGDLGPALGSPFSPQQNMSLLESFGFQIVQSAFASLVDPE
 VDQPIGPEGK

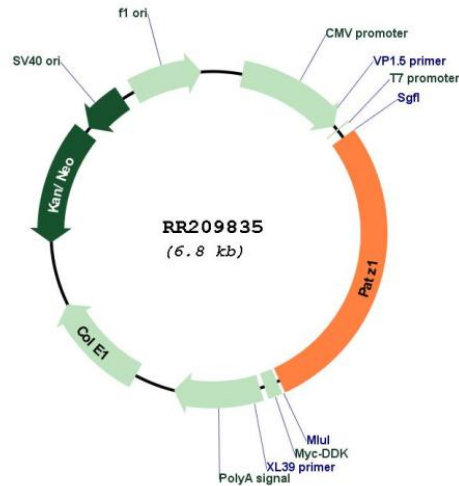
TRTRPLEQKLISEEDLAANDILDYKDDDDKV

Restriction Sites:

SgfI-MluI

Cloning Scheme:



Plasmid Map:


ACCN: NM_001107231

ORF Size: 1923 bp

OTI Disclaimer: The molecular sequence of this clone aligns with the gene accession number as a point of reference only. However, individual transcript sequences of the same gene can differ through naturally occurring variations (e.g. polymorphisms), each with its own valid existence. This clone is substantially in agreement with the reference, but a complete review of all prevailing variants is recommended prior to use. [More info](#)

OTI Annotation: This clone was engineered to express the complete ORF with an expression tag. Expression varies depending on the nature of the gene.

Components: The ORF clone is ion-exchange column purified and shipped in a 2D barcoded Matrix tube containing 10ug of transfection-ready, dried plasmid DNA (reconstitute with 100 ul of water).

Reconstitution Method:

1. Centrifuge at 5,000xg for 5min.
2. Carefully open the tube and add 100ul of sterile water to dissolve the DNA.
3. Close the tube and incubate for 10 minutes at room temperature.
4. Briefly vortex the tube and then do a quick spin (less than 5000xg) to concentrate the liquid at the bottom.
5. Store the suspended plasmid at -20°C. The DNA is stable for at least one year from date of shipping when stored at -20°C.

RefSeq: [NM_001107231.2](#), [NP_001100701.1](#)

RefSeq Size: 2920 bp
RefSeq ORF: 1926 bp
Locus ID: 305471
Cytogenetics: 14q21
MW: 69.1 kDa