

## Product datasheet for **RR209798**

### Rhov (NM\_138542) Rat Tagged ORF Clone

#### Product data:

Product Type: Expression Plasmids  
 Product Name: Rhov (NM\_138542) Rat Tagged ORF Clone  
 Tag: Myc-DDK  
 Symbol: Rhov  
 Synonyms: Arhv; Chp  
 Mammalian Cell Selection: Neomycin  
 Vector: pCMV6-Entry (PS100001)  
 E. coli Selection: Kanamycin (25 ug/mL)  
 ORF Nucleotide Sequence: >RR209798 representing NM\_138542  
 Red=Cloning site Blue=ORF Green=Tags(s)

TTTTGTAATACGACTCACTATAGGGCGGCCGGAATTCGTCGACTGGATCCGGTACCGAGGAGATCTGCC  
 GCC**CGATCGCC**

ATGCCTCCAGCGGGCGTGCCAGCTTGGACAGATTGTCAGCGTCCGGCTGCGGAACCTGCCTCCCTGAGC  
 GCCCGGGAGCCTGGTCCGGGCTGGCCCTCTGCTACCCCGGGAGCGGGCCATGCCCGCGGGAGCTGAG  
 CGAGGCCGAGCCACCGCCTCTCCGGCCTCGACCCTCTCCGGCGGGCGCAGCGCCCTCCGGAGCTG  
 GGCATCAAATGCGTGCTGGTGGCGATGGCGCGTGGCAAGAGCAGCCTCATCGTCAGTACACCTGCA  
 ATGGATACCCCTCGCGCTATCGGCCTACAGCACTGGACACTTTCTCCGTGCAAGTCTGGTATGAGGAGC  
 CCCTGTGCGAATTGAGCTCTGGGACACAGCAGGGCAGGAGGACTTTGACCGGCTTCGTTCTCTGCTAC  
 CCGGATACCGATGCTTTCTGGCTTGTTCAGCGTGGTGCAGCCAGCTCCTTTCAAACATAACAGAAA  
 AATGGCTGCCGGAGATCCGCACTACAACCCCAAGCACCTGTGTTGCTGGTGGGCACTCAGGCCGACCT  
 GAGGGACGATGTCAATGTACTAATTCAGTTGGACCAAGGAGGTCGGGAGGGCCAGTACCCGAACCCAA  
 GCCCAGGGTTGGCTGAGAAGATCCGGGCTGCTGCTACCTTGAGTGCTCAGCCTTGACGCAGAAGAACT  
 TGAAGGAGGTGTCGACTCAGCCATTCTCAGTGCATTGAGCACAAGCCCGCTGGAGAAGAACTGAA  
 CGAAAAGGTGTGCGCACGCTCTCTCGTGTGCTGGAAGAAGTCTTTCTGCTTTGTT

**ACGCGT**ACGCGGCCGCTCGAGCAGAAACTCATCTCAGAAGAGGATCTGGCAGCAAATGATATCCTGGATT  
 ACAAGGATGACGACGATAAGGTTTAA



[View online »](#)

**Protein Sequence:** >RR209798 representing NM\_138542  
Red=Cloning site Green=Tags(s)

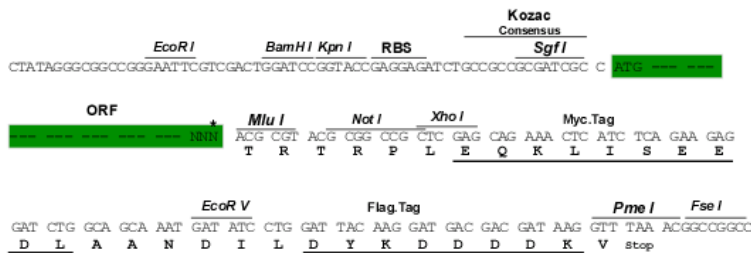
MPPAGVPSLDRLSASGCGTCLPERRGAWGLAPLLPRERAMPPRELSEAEPPPLPASTPPPPRRRSAPPEL  
 GIKCVLVGDGAVGKSSLIVSYTCNGYPSRYRPTALDTFSVQVLVDGAPVRIELWDTAGQEDFDRLRSLCY  
 PDTDVFLACFSVVQPSSFQNI TEKWLPEIRTHNPQAPVLLVGTQADLRDDVNVL IQLDQGGREGVPPEPQ  
 AQGLAEKIRACCYLECSALTQKNLKEVFDSAILS AIEHKARLEKLNAGVRTL SRCRWKKFFCFV

TRTRPLEQKLISEEDLAANDILDYKDDDDKV

**Restriction Sites:** Sgfl-MluI

**Cloning Scheme:**

Cloning sites used for ORF Shuttling:



**ACCN:** NM\_138542

**ORF Size:** 828 bp

**OTI Disclaimer:** The molecular sequence of this clone aligns with the gene accession number as a point of reference only. However, individual transcript sequences of the same gene can differ through naturally occurring variations (e.g. polymorphisms), each with its own valid existence. This clone is substantially in agreement with the reference, but a complete review of all prevailing variants is recommended prior to use. [More info](#)

**OTI Annotation:** This clone was engineered to express the complete ORF with an expression tag. Expression varies depending on the nature of the gene.

**Components:** The ORF clone is ion-exchange column purified and shipped in a 2D barcoded Matrix tube containing 10ug of transfection-ready, dried plasmid DNA (reconstitute with 100 ul of water).

**Reconstitution Method:**

1. Centrifuge at 5,000xg for 5min.
2. Carefully open the tube and add 100ul of sterile water to dissolve the DNA.
3. Close the tube and incubate for 10 minutes at room temperature.
4. Briefly vortex the tube and then do a quick spin (less than 5000xg) to concentrate the liquid at the bottom.
5. Store the suspended plasmid at -20°C. The DNA is stable for at least one year from date of shipping when stored at -20°C.

**RefSeq:** [NM\\_138542.2](#), [NP\\_612551.2](#)

**RefSeq Size:** 1741 bp

**RefSeq ORF:** 831 bp

**Locus ID:** 171581

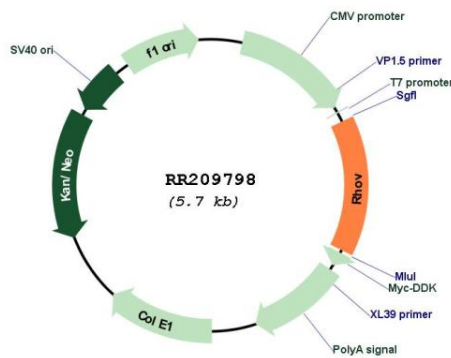
**UniProt ID:** [Q9Z1Y0](#)

**Cytogenetics:** 3q35

**MW:** 30.3 kDa

**Gene Summary:** Plays a role in the control of the actin cytoskeleton via activation of the JNK pathway. [UniProtKB/Swiss-Prot Function]

### Product images:



Circular map for RR209798