

## Product datasheet for **RR209792**

### Med1 (NM\_001134361) Rat Tagged ORF Clone

#### Product data:

**Product Type:** Expression Plasmids  
**Product Name:** Med1 (NM\_001134361) Rat Tagged ORF Clone  
**Tag:** Myc-DDK  
**Symbol:** Med1  
**Synonyms:** RGD1559552  
**Vector:** pCMV6-Entry (PS100001)  
**E. coli Selection:** Kanamycin (25 ug/mL)  
**Cell Selection:** Neomycin  
**ORF Nucleotide Sequence:** >RR209792 representing NM\_001134361  
Red=Cloning site Blue=ORF Green=Tags(s)

TTTTGTAATACGACTCACTATAGGGCGCCGGGAATTCGTCGACTGGATCCGGTACCGAGGAGATCTGCC  
GCCGGATCGCC

ATGAGTTCCTCTTTGGACCGGCTCCATGCAAAATTTAACCAAAGTAGACCTTGGAGTGAGACCATTAAGC  
 TTGTGCGTCAAGTCATGGAGAAGAGGGTCGTAATGAGTTCGGAGGACATCAGCATTGGTCAGCTGTTT  
 GGAGACATTACAGAAGGCTCTCAAAGTAACATCTTTGCCAGCAATGACTGATCGTTTGGAAATCCATAGCC  
 AGACAGAAATGGACTGGGCTCTCATCTCAGTGCCAGTGGCACTGAATGTTACATCAGTCAGATATGTTCT  
 ATGTGGAAGTGCAGTTAGACCCTGCAGGACAGCTTTGTGATGTAAAAGTGGCTCACCATGGGGAGATCC  
 TGTGAGCTGTCCAGAGCTTGTGCAGCAGTTAAGGGAAAAGAATTTTGTGAGTTTTCTAAGCATCTTAAG  
 GGTCTTGTAACTGTATAACCTTCCAGGAGACAACAACTGAAGACTAAGATGTATCTGGCTCTCCAGT  
 CCTTAGAACAGGACCTTTCTAAAATGGCAATTATGTAAGGCAACTAATGCTACTCCCTGGATAA  
 GATTCTTACGGAAGTGTGGCTATCTCACTCCACGGAGCGGGGTCATTTAATGAACATGAAATACTAT  
 GCCTCTCCGTCTGACCTGCTGCATGATACAACCTGCCTCTCCTATCACTTGCATGAAAAGAATGTTCCCTC  
 GGTCTTTGGGAATGAATGCCTCAGTGACAATTGAAGAACCTCTGCTATGTACAACTCCAATTGCCCC  
 ATTAATTATGGGGTCACACCCAGCTGACAACAAATGGACCCCTTTCTTCTGCACTACTAGTCCCAAC  
 AGTGTGATCTTCTGCGTGTCTTCTTGAATTTCCAGCCAATCCAGTATCTAAAGCATTGTCTC  
 AGAAACTGCAAAATGCACGGGAATCCCCTTGTGAGACTCCGCTACTTACCTGCCCTCTATGAACT  
 CATCACTCAGTTTGTGCTCAAAGGATCTGACCCTTTACCTTGAATCACAACATGCGATTTTACGCT  
 GCTCTTCCAGGTCAGCAGCACTGCTATTTTCTCAATAAAGATGCTCCTCTTCTGATGGCCAAAGCCTGC  
 AGGGAACACTGGTCAGCAAAATCACCTTCCAGCACCTGGCCGAGTTCCTTATCTTGAATATGATCAG  
 ACACCAAGTGGCCTATAACACCCTAATTGGAAGCTGTGTTAAAAGAAGTATTTAAAAGAAGATTCTCCT  
 GGGCTCCTCCAATTTGAAGTGTGCTCCTTTTCAAGTCTCGATTGATGATCTTTTTCAGCACCTGTGA  
 ATGACTCCCTTGTGTGTGGTGTGAGCTGCAAGACTCAACACATGTGAGCTGTAACACTACAAAGG  
 GCTATCAGATGCACTGATCTGTACAGACGACTTATTGCCAAAGTTGTTCAAAGATGTATGTCCATCCCT  
 GTGACGATGAGGGCTATTCGGAGGAAGGCTGAAACCATACAGGCTGACACGCCAGCACTGTCCCTCATTC



[View online »](#)

CAGAGACAGTCGAAGACATGGTAAAAAGAACCTGCCCCCGGCTAGCAGCCCAGGGTATGGCATGACCAC  
AGGCAGCAACCCAATGAGCGGTACCACCACCAACCAACACCTTTCCGGGGGGTCCCATTACCACCTTG  
TTAATATGAGCATGAGCATCAAAGATCGGCATGAGTCGGTGGGCCATGGGGAGGACTTCAGCAAGGTGT  
CTCAGAACCCAATTTACCAGTTTGTGCAAATCACAGGGAACGGGGGTCTACCATTGGCTCGAGTCC  
GACCCCTCCTCATCACACGCCGCCACCTGTCTTCGATGGCCGGCAACCAAGAACCACCCGATGCTC  
ATGAACCTTCTTAAAGATAACCCCTGCCAAGATTTCTCAACCTTTATGGAAGCAGCCCTTTAGAAAAGGC  
AGAACCTCTTCCGGATCACCCGGATGGAAATGTGCTCGGGGAGCAACAAGACCAAGAAAAAATAGTC  
ATCAAGAGTACCACCGGACAAACCAAGCACCAGACCGAAGATGATTTTCAGAGGGAGCTTTTTCAATG  
GATGTCGACTCACAGAACCCTATGTTTCGATGTCAGCATGACAGCTGACGCGCTGGATACACCTCATATCA  
CTCCAGCTCCAAGCCAGTGTAGTACGCCCCAACCAACGTACCACAGCCAGTGTCTACCCCCAGCCAG  
TATTCAAAGGATGGGCCGACTGTCCAGTTCAGACAGCATTGGCCAGATGTAAGTATTTCTTTTCAGAC  
ATTGCAGAAGAAGCTTCAAAGCTTCCCAGCACTAGTGTGATTGCCACCCATTGGTACCCAGTTCGAG  
ATTCTCGAGTTCTGGGCATTCTCAGAGTGCCCTTTTGACTCTGATGTCTTTTCAGACTAATAACAATGA  
AAATCCATACACTGACCCGGCTGACCTTATTGCAGATGCTGCTGGGAGCCCCAGTGTGATTCTCCTACC  
AATCATTTTTTCCCTGATGGAGTAGATTTCAATCCTGATTTGTTGAACAGCCAAAGCCAAAGTGGTTTTG  
GAGAGGAGTATTTGATGAAAGTAGTCAGAGTGGGGATATGATGATTTCAAAGGATTTGCATCTCAGGC  
ACTAAATACTTTGGGGATGCCAATGCTCGGAGGTGACAATGGGGAGTCGAAATTGAAGGGCAGCAGCCAA  
GCTGACACAGTTGACTTCAGTATTCTGTGAGTAGCTGGTAAGGCTTTGGGTGCAGCAGACCTTCTGGAGC  
ACCACAGTGGTAGTCAGAGTCTCTGCTGACCACTGGAGAATTAGGGAAAGAAAAAACTCAAAGAGGGT  
GAAGGAAGGCAACGGTATGGGCGCTAGCAGTGGGTGAGCCCGGGGTGAGACAGCAAGCCAGGCAAGCGC  
AGCCGCACACCTTCCAATGATGGGAAGAGCAAAGATAAGCCTCCAAGCGAAAGAAGGCAGACACGGAGG  
GAAAATCCCATCTCACAGTTCTAATAGACCTTTCACCCACCCACCAGTACAGGTGGTCCAAATCCCC  
TGGCAGTTCAGGACGATGTCAGACGCCCTGGTGTGCCACACCGCCCATTTCCAAAGTACACCTCAG  
ATTCTAAAGGAACAGTATGGTGGGCAAGCCTTCTCGCACAGTCAGTACTCTAGCAGTGGTCTGTGT  
CTTCTCTGGCAGCAAAAGCCACACAGTCATTCTTCTCCTCCTTCTTATCTTCTGCTTCCACCTC  
AGGCAAGATGAAAAGCAGTAAATCAGAAGGCTCCTCAAGTGCCAAGCTCAGTGGCAGTATGTATTCTAGC  
CAAGGGTCTTCTGGATCCAGCCAGTCCAAAAATTCATCTCAGACTGGGGGGAAGCCAGGCTCCTCTCCCA  
TTACCAAACATGGACTGAGTAGTGGGTCTAGCAGCACCAAGATGAAACCTCAAGGCAAGCCATCCTCACT  
TATGAATCCTTCTATAAGTAAACCAAACATATCCCCTTCCATTCAAGGCCTCCTGGAGGCTCAGATAAG  
CTTGCCTCTCAAATGAAGCCTGTTCCCGGACCCCCCATCCTCTAAAGCCAAGTCCCCTATCAGTTCAG  
GTTCTGGTAGCTCTCATGTGTCAGGAAGTGTCAAGCTCTGGTATGAAGTCTTCTCAGGGTCAAGTATC  
CTCAGGCTCATTGTCTCAAAAACTCCCCAGCATCTAATTCTTGTACACCATCTTCTCCTCATTTTTCC  
TCAAGTGGTCTTCCATGTCATCCTCTCAGAATCAACATGGGAGTTCCAAAGGGAATCTCCCAGTAGGA  
ATAAGAAGCCTTCTTTGACAGCTGTATAGATAAATTGAAGCATGGGGTGGTTACCAGTGGGCTGGGGG  
TGAGGATCCAATAGACAGTCAGATGGGTGCAAGCACAATTCCTCTAACCATCCCATGTCCTCCAAACAT  
AACATGTCAGGAGGAGAATTCAGAGCAAACGTGAGAAAAGCGATAAAGACAAATCAAAGGTTTCTACTT  
CTGGAGGATCAGTTGATTCCTCTAAGAAGACTTCAGAGTCAAAAAATGTGGGGAGCACGGGTGTGGCAA  
AATTATTATCAGCAAGCACGATGGAGGCTCCCCGAGCATCAAAGCCAAAGTGACTCTACAGAAACCTGGA  
GATAGTGGTGGAGAAGGGCTCAGGCCACAGATCGCCTTCAAAAAACTATGGCTCTCCATTGATCAGTG  
GTTCTACTCCAAAGCATGAACGGGGTCTCCCAGCCACAGTAAGTCGCCAGCATATACACCTCAGAAATGT  
GGACAGTGAAGTGAGTCAAGGCTCCTCCATAGCAGAGAGATCCTACCAGAACAGCCCCAGCTCAGATGAT  
GGTGTCCGGCCACTCCCAGAATACAGCACAGAGAAGCATAAGAAGCACAAAAAGGAAAAGAAAAAGTAA  
AAGATAAAGATAGAGACCGGGACAGAGCAAAGACAGAGACAAGAAAAAATCTCAGAGCATCAAGCCAGA  
GAATTGGTCTAAATCCCCATTTCTTTCAGATCAGACTTCATCTATGACAAATAACCTATCTTATCTGCA  
GACAGGCCTTCCAGGCTCAGCCCTGACTTTATGATTGGGGAGGAAGATGATGATCTTATGGATGTGGCTC  
TGATTGGCAAT

ACGCGTACGCGGCGCTCGAGCAGAACTCATCTCAGAAGAGGATCTGGCAGCAAATGATATCCTGGATT  
ACAAGGATGACGACGAT AAGGTTTAA

**Protein Sequence:** >RR209792 representing NM\_001134361  
 Red=Cloning site Green=Tags(s)

MSSLLDRLHAKFNQSRPWSSETIKLVQRVMEKRVVMSSGGHQHLVSCLETQKALKVTSPLPAMTDRLIESIA  
 RQNLGSHLSASGTECYITSDMFYVEVQLDPAGQLCDVKVAHHGENPVSCPELVQQLREKNFDEFKHLK  
 GLVNLYNLPGDNKLTMYLALQSLQDL SKMAIMYWKATNATPLDKILHGVSQYLTPRSGGHLMMNKYY  
 ASPSDLHDDTTASPIITLHEKNVPRSLGMNASVTIEGTSAMYKLP IAPLIMGSHPADNKWTPSFSAVTSAN  
 SVDLPACFFLKFQPIPVSKAFVQKLQNCCTGIPLFETPPTYLPL YELITQFELSKDPDPLPLNHNMRFYA  
 ALPGQQHCFYLNKDAPLDPGQSLQGTLVSKITFQHPGRVPLILNMIRHQVAYNTLIGSCVKRILKEDSP  
 GLLQFEVCPLSESRFSVSFQHPVNDLVCVMDVQDSTHVSKLYKGLSDALICTDDFIKVVQRCSIP  
 VTMRAIRKAETIQADTPALSLIAETVEDMVKKNLPPASSPGYGMTTGSNPMSTTTPTNTFPGGPITTL  
 FNMSMSIKDRHESVGHGEDFSKVSQNPILTSLLQITGNGGSTIGSSPTPPHHTPPPVSSMAGNTKNHPML  
 MNLLKDNPAQDFSTLYGSSPLERQNSSSGSPMEMCSGSKTKKNKSSRVPPDKPKHQTEDDFQRELFM  
 DVDSQNPMDVSMADALDTPHITPAPSQCSTPPTYQPVSHPQPSIQRMGR LSSSDSIGPDVTDILSD  
 IAEEASKLPSTSDDCPPIGTPVRDSSSSGHSQSALFSDSVFQTNNNENPYTDPADLIADAAGSPSSDSPT  
 NHFFPDGVDFNPDLLNSQSQSGFGEEYFDESSQSGDNDDFKGFASQALNTLGMPLGGDNGESKLGSSQ  
 ADTVDF SILSVAGKALGAADLLEHHSQSPLLTGELGKEKTQKRVKEGNGMGASSGSGPGSDSKPGKR  
 SRTPSNDGKSKDKPPKRRKADTEGKSPSHSNRPFTPTSTGGSKSPGSSGRCQTPPGVATPPPKITIQ  
 IPKGTVMVGKPSHSQYSSSGSVSSSGSKSHSHSSSSSSLSASTSGMKSSKSEGSSAKLSGSMYSS  
 QGSSGSSQSKNSSQTGGKPGSSPITKHGLSSGSSSTKMKPQGKPSLMNPSISKPNISPSHSRPPGGSDK  
 L ASPMKPVPGTPPSSKAKSPISSGSGSSHVSGTSSSSGMKSSSGSGSSGSLSQKTPPASNSCTPSSSSFS  
 SSGSSMSSSQNHGSSKSKSPSRNKKPSLTAVIDKLGKGVVTSVSGGSDSSKTSKKNVSTGVAKIIISKHDGGSPIKAKVTLQKPG  
 DSGGEGLRPQIASSKNYGSP LISGTPKHERGSPSHSKSPAYTPQNV DSESESGSSIAERSYQNSPSSDD  
 GVRPLPEYSTEKHKHKKKVKDKDRDRDRDKKSHSIPENWSKSPISSDQTSMTNPNILSA  
 DRPSRLSPDFMIGEEDDLMDVALIGN

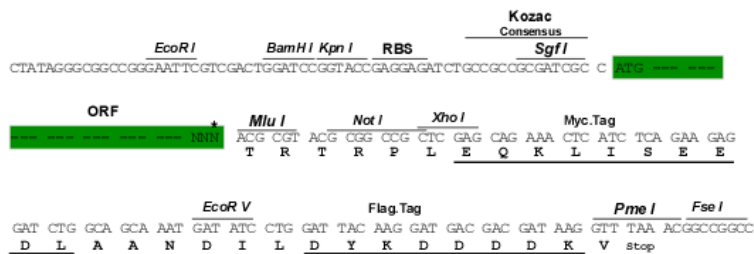
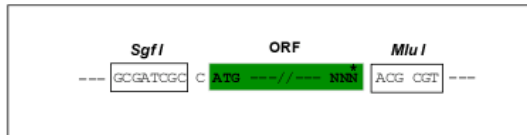
TRTRPLEQKLISEEDLAANDILDYKDDDDKV

**Restriction Sites:**

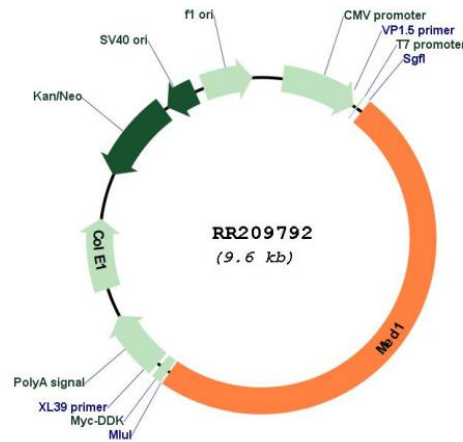
SgfI-MluI

**Cloning Scheme:**

Cloning sites used for ORF Shuttling:



\* The last codon before the Stop codon of the ORF

**Plasmid Map:**


**ACCN:** NM\_001134361

**ORF Size:** 4701 bp

**OTI Disclaimer:** The molecular sequence of this clone aligns with the gene accession number as a point of reference only. However, individual transcript sequences of the same gene can differ through naturally occurring variations (e.g. polymorphisms), each with its own valid existence. This clone is substantially in agreement with the reference, but a complete review of all prevailing variants is recommended prior to use. [More info](#)

**OTI Annotation:** This clone was engineered to express the complete ORF with an expression tag. Expression varies depending on the nature of the gene.

**Components:** The ORF clone is ion-exchange column purified and shipped in a 2D barcoded Matrix tube containing 10ug of transfection-ready, dried plasmid DNA (reconstitute with 100 ul of water).

**Reconstitution Method:**

1. Centrifuge at 5,000xg for 5min.
2. Carefully open the tube and add 100ul of sterile water to dissolve the DNA.
3. Close the tube and incubate for 10 minutes at room temperature.
4. Briefly vortex the tube and then do a quick spin (less than 5000xg) to concentrate the liquid at the bottom.
5. Store the suspended plasmid at -20°C. The DNA is stable for at least one year from date of shipping when stored at -20°C.

**RefSeq:** [NM\\_001134361.1](#), [NP\\_001127833.1](#)

RefSeq Size: 5813 bp  
RefSeq ORF: 4704 bp  
Locus ID: 497991  
Cytogenetics: 10q31  
MW: 166.4 kDa