

## Product datasheet for **RR209785**

### PPP1R9A (NM\_053473) Rat Tagged ORF Clone

#### Product data:

**Product Type:** Expression Plasmids  
**Product Name:** Ppp1r9a (NM\_053473) Rat Tagged ORF Clone  
**Tag:** Myc-DDK  
**Symbol:** Ppp1r9a  
**Synonyms:** Neb1  
**Vector:** pCMV6-Entry (PS100001)  
**E. coli Selection:** Kanamycin (25 ug/mL)  
**Cell Selection:** Neomycin  
**ORF Nucleotide Sequence:** >RR209785 representing NM\_053473  
 Red=Cloning site Blue=ORF Green=Tags(s)

TTTTGTAATACGACTCACTATAGGGCGGCCGGGAATTCGTCGACTGGATCCGGTACCGAGGAGATCTGCC  
 GCC**GCGATCGC**C

ATGTTGAAAGCTGAATCTTCAGGTGAACGAACCACTCTCAGAAGTGCCTCTCCTCACAGGAATGCATACA  
 GAACTGAGTTCAGGCACTGAAAAGTACTTTTGACAAACCCAAACCTGATGGGGAACAGAAAACGAAAGA  
 AGGTGAGGGCTCCCAGCAGAGTAGGGGTAGGAAGTATGGCTCCAATGTCAACAGAATTAAGAACCTGTTC  
 ATGCAGATGGGTATGGAACCCAAACGAGAATGCTGCTATCATTGCCAAAACGAGAGGGAAAGGTAGGCCCT  
 CATCCCCTCAGAAGAGGATGAAGCCCAAAGAATTTGTGGAGAAAACCGATGGCTCAGTGGTTAAACTGGA  
 GTCCTCTGTCTCTGAACGGATTAGCAGATTTGACACAATGCACGATGGCCCTTCGTATGCTAAGTTCACA  
 GAGACTCGAAAGATGTTTGAGAGAAGTGGGCATGAGTCAGGGCAAATAATCGCCATTCGCCAAAGAAAG  
 AGAAAGCGGGAGAGGCTGAGCCACAGGATGAGTGGGGTGGCTCCAAGTCCAATAGAGGCAGCAGTGATTC  
 CTTGGACAGCCTGAGCCCTCGGACGGAGGCTGTCTCTCAACTGTGAGCCAACACTGAGTCCGCTGTTTGAG  
 AACAGTGAGTCTCCAGGTGCCATCACTCCTGGGAAGGCTGAGAACAGCAACTACTCGGTGACTGGGCATT  
 ACCCCCTGAACCTACCATCTGTTACCGTAACCAATCTGGATACCTTTGGCCGTCTCAAGGATTCTAATTC  
 AAGGCCTTCTTCAAACAACAAGCTACCGACACAGAAGAGCCTGAGAAGAGTGAGGCTGTGCCAGTACCG  
 GAAGTGCTCAGAAAGGTACCTCTTTAGCTTCATTGCCTAGTGAAGAGAGACAGCTGAGCACGGAAGCTG  
 AGGACGTCACAGCTCAACCAGACACTCCGGACAGCACTGATAAAGACAGTCTGGAGAACCTTCTGCTGA  
 AAGCCAGGCAATGCCAAGTCTAACACCCTCTCCGACCGAAGGAGCCGTTAGAAGATGCTGAAGCTAAT  
 GTGGTCCGGAGTGAGGCAGAGCAGCCACAGAGGAGAGACCTGACAGGTGGTGGTACCTCACCTCCCGG  
 ACGCGTCTGCTCCAGCTGTGGAAAGAAGTACCTGAAGACTCGAACAGTTTTGAGGGCTCCCATGTATA  
 CATGCATAGTGACTATAACGTGTATCGGGTGAATCCAGGTATAACTCGGACTGGGAGAGACGGGCACA  
 GAGCAGGATGAGGGGGACGACAGCGATGAGAACAATTACTATCAGCCGATATGGAGTACTCGGAAATTG  
 TTGGCTTGCCGCAAGAGGAAGAAATCCAGCAAATAGGAAAATTAAGTTTAGTTGTGCTCCGATTAAGGT  
 TTTCAACACGTAACCTGAAGACTATGACAGGAGGAATGATGACGTTGACCCTGTGGCTGCATCTGCT  
 GAGTACGAACTTGAAAAGCGAGTAGAAAAGCTGGAACCTTTCCAGTGGAACTGGAGAAAGATGAGGATG



[View online >](#)

GGCTTGGCATAAGCATTATTGGAATGGGCGTTGGTGTGATGCTGGACTGGAGAAGCTGGGGATATTCGT  
 CAAGACAGTGAAGGAGGTGCTGCTCAGCGGGATGGCAGGATCCAAGTCAATGACCAGATTGTGAA  
 GTGGATGGAATCAGCCTGGTGGGGTACACAGAATTCGCTGCAACTGTTCTGCGGAACACCAAGGGCA  
 ACGTCAGGTTTGTATTGGACGAGAAAAACCAGGACAAGTGAGTGGGTTGCCAGTTGATCAGCCAGAC  
 CCTGGAACAAGAGAGGAGACAGAGGGAGCTGCTCGAACGCCACTACGCCAGTATGATGCTGACGACGAT  
 GAGACCCGAGAATATGCCACTGATGAAGAAGAAGATGAGTTGGACCCATTCTTCTGGTGGTACATGG  
 CCATTGAAGTCTTCGAGCTCCCTGAGAATGAGACATGTTTTCCCATCTGACTTGGATACAAGCAAGCT  
 CAGTCACAAGTTCAAAGAGTTGCAAATCAAACATGCAGTTACAGAAGCAGAGATTCAAAAATTGAAGACC  
 AAGCTGCAAGCAGCAGAGAATGAGAAAGTAAGGTGGAACTAGAAAAGAACCAACTGCAGCAGAATATTG  
 AGGAGAAATAAGAAAGGATGGTAAAGCTGGAGAGCTACTGGATCGAGGCGCAGACATTATGTCACACCGT  
 GAACGAGCATCTCAAAGAGACCCAAAGCCAGTATCAGGCCTTGGAAAAGAAGTACAACAAAGCCAAGAAG  
 TTGATCAAGGATTTTCAACAAAAGAGCTCGATTTTCATCAGGAGACAAGAAGTAGAAAAGAAAGAGCTGG  
 AGGAGGTGAAAAAGCTCACCTTGTGAAGTCCAAGGCCTGCAAGTTCGATTAGAGATTGGAGGCTGA  
 GGTGTTACAGACTACTAAAGCAAAATGGGACCAAGTTAAACAACAACAACATCTTTGAGAGAAGACCA  
 TCTCCTGGGAAGTCTCAAAGGAGACACTATGGAGAATGTGGAAGTCAAGCAAAACATCCTGTCAGGACG  
 GCTTGAGCCAAGACTTGAATGAAGCAGTCCCAGAGACAGAGCGCTGGATTGCAAAAGCGCTGAAAACCTG  
 GGCCAGCTCTCTGTGAAGAACAGGCGCCAGAGGCCCAAGGACAAGGCTCTATGACAGCGTCAGCTCC  
 ACTGATGGGGAGGACAGCCTGGAGCGGAAGATTTACCTTCAATGATGACTTCAGTCCAAGCAGTACCA  
 GTTCAGCAGACCTGAGCGGCTTAGGAGCAGAACCCAAAACGCCAGGGCTCTCCAGTCTTGGCACTGTC  
 CTCAGATGAGAGCCTGGACATGATAGATGATGAGATCCTTGACGATGGACAGTCTCCAAACACACTCAG  
 AGTCAGAGCCGGCCGTCATGAGTGGAGTGTGCAGCAGGTTTACACTGGTTAGTGGGCTCAGTCTGG  
 ACCAGTATGTCTGAATTCAGTGTCTCAGAATCAGTGGTGGCAGCTCCTGCAGCTGGATGGCAATAA  
 ACTGAAGGCTTGGAAATGACATCATCCAGGATCGGGACTGGTTAAAAAAAACCTGAAGGAAATGAAG  
 ATGTCTCTCGAGAAGGCTCGCAAGGCCAGGAGAAAATGGAAAAACAAGAGAAAAAGCTGAGGAGGAAGG  
 AACAAGAGCAAAATGCAGAGGAAGTCTAAAAGTTCGAAAAAGATGACTTCCACAACCGAGCAACCG

AGCGGACCGACGCGTACGCGGCCGCTCGAGCAGAACTCATCTCAGAAGAGGATCTGGCAGCAAATGATATCC  
 TGGATTACAAGGATGACGACGATAAGGTTTAA

**Protein Sequence:**

>RR209785 representing NM\_053473  
 Red=Cloning site Green=Tags(s)

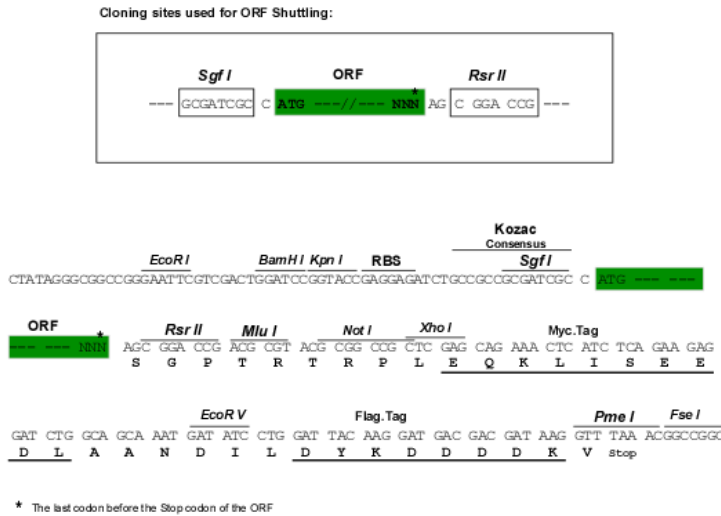
MLKAESSGERTTLRSASPHRNAYRTEFQALKSTFDKPKPDGEQKKEGEGSQSRGRKYGSNVNRIKNLF  
 MQMGMEPNENAAIIAKTRGKGRPSSPQKRMKPKFVEKTDGVSVKLESSYSERISRFDTMHDGSPYAKFT  
 ETRKMFERSGHESGQNNRHSPKKEKAGEAEPQDEWGGSKSNRGSSDSLDSLSPRTEAVSPTVSQLSAVFE  
 NSESPGAIPTGKAENSNSVVTGHYPLNLPVTVTNLDTFGRLKDSNSRPSNNKQATDTEEPEKSEAVPVP  
 EVAQKGTSLASLPSEERQLSTEADVTAQPDTPDSTDKDSPGEPESAESQAMPKSNTLSRPKEPLEDAEAN  
 VVGSEAEQPQRDLTGGGDLTSPDASASCGKEVPEDSNSEFEGSHVYMHSDYVNVYRVSRYNSDWGETGT  
 EQDEGDDSDENNYQPMEYSEIVGLPQEEIIPANRKIKFSCAPIKVFNTYSNEDYDRRNDVDVPAASA  
 EYELEKRVKLELFPVELEKDEDGLGISIIGMVGADAGLEKLGIFVKTVTEGGAAQRDGRIQVNDQIVE  
 VDGISLVGVTQNFAAATVLRNTKGNVRFVIGREKPGQVSEVAQLISQTLQERRQRELLERHYAQYDADD  
 ETGEYATDEEDEVGPILPGDMAIEVFELPENEDMSPSDLDTSKLSHKFKELQIKHAVTEAEIQKLT  
 KLQAAENEKVRWELEKNLQQNIEENKERMVKLESYWIEAQLCHTVNEHLKETQSQYQALEKKYNKAKK  
 LIKDFQKELDFIRREQEVERKLEEVKAHLVEVQGLQVRI RDLEAEVFRLLKQNGTQVNNNNNIFERRP  
 SPGEVSKGDTMENVEVKQTSQDGLSQLNEAVPETERLDSKALKTRAQLSVKNRRQRPRTRL YDSVSS  
 TDGEDSLERKNFTFNDDFPSSTSSADLSGLGAEKTPGLSQLALSSDES LDMIDDEILDGQSPKHTQ  
 SQSRVHEWSVQQVSHWL VGLSLDQYVSEFSAQNI SGEQLQLDGNK LKALGMTSSQDRALVKKL KEMK  
 MSLEKARKAQEKMEKQREKLRRKEQEQMQRKSKKSEKMTSTTEQP

SGPTRTRPLEQKLI SEEDLAANDILDYKDDDDKV

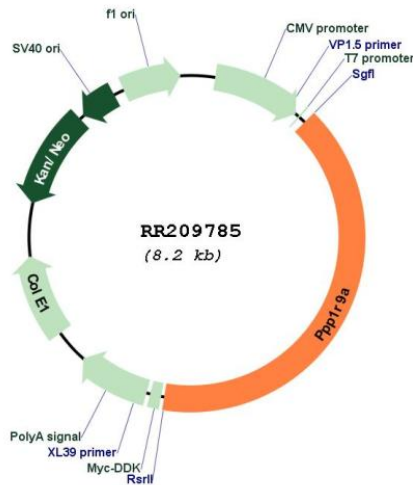
**Restriction Sites:**

SgfI-RsrII

Cloning Scheme:



Plasmid Map:



ACCN: NM\_053473

ORF Size: 3285 bp

OTI Disclaimer: The molecular sequence of this clone aligns with the gene accession number as a point of reference only. However, individual transcript sequences of the same gene can differ through naturally occurring variations (e.g. polymorphisms), each with its own valid existence. This clone is substantially in agreement with the reference, but a complete review of all prevailing variants is recommended prior to use. [More info](#)

OTI Annotation: This clone was engineered to express the complete ORF with an expression tag. Expression varies depending on the nature of the gene.

<b>Components:</b>	The ORF clone is ion-exchange column purified and shipped in a 2D barcoded Matrix tube containing 10ug of transfection-ready, dried plasmid DNA (reconstitute with 100 ul of water).
<b>Reconstitution Method:</b>	<ol style="list-style-type: none"><li>1. Centrifuge at 5,000xg for 5min.</li><li>2. Carefully open the tube and add 100ul of sterile water to dissolve the DNA.</li><li>3. Close the tube and incubate for 10 minutes at room temperature.</li><li>4. Briefly vortex the tube and then do a quick spin (less than 5000xg) to concentrate the liquid at the bottom.</li><li>5. Store the suspended plasmid at -20°C. The DNA is stable for at least one year from date of shipping when stored at -20°C.</li></ol>
<b>RefSeq:</b>	<u>NM_053473.2</u> , <u>NP_445925.1</u>
<b>RefSeq Size:</b>	3846 bp
<b>RefSeq ORF:</b>	3288 bp
<b>Locus ID:</b>	84685
<b>UniProt ID:</b>	<u>O35867</u>
<b>Cytogenetics:</b>	4q13
<b>MW:</b>	122.7 kDa
<b>Gene Summary:</b>	binds to protein phosphatase type I and to actin filaments; involved in regulation of synaptic transmission [RGD, Feb 2006]