

Product datasheet for **RR209782**

Gpr156 (NM_153295) Rat Tagged ORF Clone

Product data:

Product Type:	Expression Plasmids
Product Name:	Gpr156 (NM_153295) Rat Tagged ORF Clone
Tag:	Myc-DDK
Symbol:	Gpr156
Synonyms:	Gababl
Mammalian Cell Selection:	Neomycin
Vector:	pCMV6-Entry (PS100001)
E. coli Selection:	Kanamycin (25 ug/mL)



[View online »](#)

ORF Nucleotide Sequence:

>RR209782 representing NM_153295
 Red=Cloning site Blue=ORF Green=Tags(s)

TTTTGTAATACGACTCACTATAGGGCGGCCGGGAATTCGTCGACTGGATCCGGTACCGAGGAGATCTGCC
 GCC**CGCATCGCC**

ATGGAGCCGGAATCAACTGCTCTGAATTCTGTGACGTTTTCTGGTCAAGAGCTGGATCGGAGACCCC
 TTCATGATCTTTGCAAGACAACCATTACGACTCCAGCATGGTAGTGCGGACATCTCCCCACTGTCTCC
 TGCCCTCTGGGTGTTATTTGGACCTTTCTCAGCTGTGGGCTACTTCTGGTGCTTTTCTTTCTGGCTTTC
 ACAATCCGCTGCAGGAAGAACAGGATTGTGAAGATGTCCAGCCCCAATCTGAACATTGTGACCTTGTGG
 GCAGTTGTCTGACCTACAGCAGCGCTTACCTTTTCGGGATTACAGGACGCTCTTGTGGGGAGTTAGTGG
 AGCTCTCATTAGACGAGACTGCTTGTGTGCATCGGGACGACCCTGGTGTGGCCCTATTCTGGGG
 AAGAGCTGGCGACTCTACAAAGTGTACCCAGAGAGTCCCGACAAGAGAGTGATTATCAAAGACCTGC
 AGTTGCTGGGGTGGTGGCAGCCCTGGTGGTGGCTGATGTAATCCTGCTCGTGACGTGGGTGCTGACGGA
 TCCCATCCAGTGCCTCCAGATCCTTGGTGTGAGCATGAAGGTGACAGGGAGAGATGTATCCTGCTCTTTG
 ACCAACACACATTTCTGTGCTTACCGTACTCTGATGTCTGGATTGCCCTGGTTTTGGGATGCAAGGGGC
 TGCTGCTGCTGTATGGCGCTTACCTGGCTGGCCTGACCAACCATGTCAGCTCTCCTCCAGTGAACCAAGTC
 TTTGACCATCATGGTCCGAGTCAACCTCCTGCTCCTCACTGCTGGCCTGCTTTTTGTGGTACCAGATAC
 TTGCACTCCTGGCCCAATCTGGTCTTTGGACTCACATCYGGAGGTATCTTCGTTTGCAACCACCACCGTGA
 ACTGCTGTGCTTCTCTCCCCAGCTGAGGCAGCGGAAGGCATTTGAAGGAGAAAACCAACAATCAGACA
 CATGGCCAAATACTTACGACTCCAGCAAAACCTTCCGACGAAAGTTCGACGAGGACCAGAGCTGCCAC
 TTGAGAGATGAGAASAGCTGCATGGAGAGGCTCCTCACGAAAAAACCGCAGTAATCGAAAGCCTGCAAG
 AGCAAGTGAGCAATGCCAAGGAGAAGCTGGTGAAGTTGATGTCTGCGGAGTGCACCCTGGACTCCCAGA
 GTGGGCCGTCCCAGCTGCAGCCTCTGCCGGTGGACCYGCAGAATGCCYCGCTACTTCTGAGAAAGAGAGC
 GGAGCAGCTGCTGAGGACTCCCTACCTGCCTCAGCGGCCTCCCAGCACATGCAAGCCCCGGGCATCGA
 GAAGGGACRCCAGTCCCTCTCCAGACAAAAGTACGACATGCCTTTGAAACAGTTTTGTGATCATTTGGA
 CATGGGCTGCAGCCAAAAGCCAAAGGCTGAACAAAGCGAGGGTCTGAAAGAGGAAACCAGGAACCCATG
 GCCCCCGGTGAGAGTCTAATGACAGATGGAGTGGCTTGTGAACCCATAGGCCCAGGCAGAACTCAGAGG
 TACTCCCGGAGAGGCTACCCCGGTTAGTTCAGTGGTCCAGAGAGAAGCTTCAAGGAGTTCTACAAGAGCT
 GGACCTGGGCACCGAGGCTCCCTTTCCCACTGCCTTGTCCCAGCAGCCCTGGAAGAGTAACACTTCC
 GGCAGCCCCCAGAAGCTGTCCCATCTAACTGGGTTTCAGCCCGTATGTTGGTGAAGGAGACGGGCAG
 CCCAGCGGGCTCGCTCACGCATCCCTGGCTCTGTGGGCCCAAGATGGGGCATCAAGCAAATAACTGT
 TTCTGGTTCAAAAATGGGCTTATTGTACAGAACAGAGACAGCCCCAGGCTGGACCACCACAATGCAAGG
 TCCAAGGAACCAAGGTCCTCTTCTGTA AAAACATCTCCAATCTCAGCACCTCACCAGAGACGGGGTAGCC
 TGGAGGGCAGCAAACAGTGTGAGACAGAGCCTCAGGAGGCCAGGGGATACAGTGTAGCTTTTCTCGACA
 ACCTTCTGCTTCTGCCCCGGCACAAAGTCCACTGCCCATGCCTATCCTCTTYACCAGCGCTGCCCAGG
 CAGCGTCAGCCTTACCCTACTGTCCCCTGGCTGTCTTCTTGTCTTCTGGGTGCTACAACTTGACA
 GTGAGTCTAGCAGCTCAGATGAGTTCTTCTGCCGCTGCCACAGGCCCTACTGTGAAATTTGCTTCCAGAG
 CTCTTTGGACTCCAATGACAGTGACACTTCAGACAGTGACCTTGAGCAGACTTCAGGATTGGCCTCCTGG
 GAAAAGCTGTTGGCCCGCTCCAAGCCTGTTGTGAACCTCAAAGATGACTTGAAGCCACACTAGT

ACGCGTACGCGGCCGCTCGAGCAGAAACTCATCTCAGAAGAGGATCTGGCAGCAAATGATATCCTGGATT
 ACAAGGATGACGACGATAAGGTTTAA

Protein Sequence: >RR209782 representing NM_153295
Red=Cloning site Green=Tags(s)

MEPEINCSEFCDSFPGQELDRRPLHDLCKTTITDSQHGSADISPLSPALLGVIWTFVLSGLLLLVFFLAF
TIRCRKNRIVKMSSPNLNIVTLGSLTYSSAYLFGIQDALVGSSVEALIQTRLSELLCIGTTLVFGPILG
KSWRLYKVFVTPDKRVIKDLQLLGLVAALVVADVILLVTWVLTDPVQCLQILGVSMKVTGRDVSCSL
TNTHFCASRYSDVWIALVLGCKGLLLL YGAYLAGLTNHVSSPPVNSLTIMVGVNLLLLTAGLLFVVTRY
LHWPVNLVFLTXGGIFVCTTTVNCCVFLPQLRQRKAFEGENQIRHMAKYFSTPSKTFRSKFDEQDQSCH
LRDEXSCMERLLTEKNAVIESLQEQVSSNAKEKLVKLMSAECALDSPEWAVPAAASAGGXAECXATSEKES
GAAAEDSLPASAASQHMQPGASRRDXSPSPDQKQYDMPLKQFCDHLDMGCSQKPKAEQSEGPERGNQEP
APGQSLMTDGVACEPHRPRQNSEVLPERLPRVSSVVREKLQEVLELDLGEAPLSPLPCPQQPWKSNTS
GSPQKLSPSKLGFSYVRRRRAAQRARSRIPGSVGLKMGHQANNTVSGSQNGLIVQNRDSPRLDHHNAR
SKEPRSSSVKPSPI SAPHQRRGSLEGSQKQETEPQEQARGYSVAFPRQPSASAPAQSSTAPCLSSXPALPR
QRQPLPLLSPGCPSLSSGCYNLDESSSSDEFFCRCHRPYCEICFQSSLDSDSDTSDSDLEQTSGLASW
EKLLARSKPVVNFKDDLKPTLV

TRTRPLEQKLI SEEDLAANDILDYKDDDDKV

Restriction Sites: Sgfl-MluI

Reconstitution Method:

1. Centrifuge at 5,000xg for 5min.
2. Carefully open the tube and add 100ul of sterile water to dissolve the DNA.
3. Close the tube and incubate for 10 minutes at room temperature.
4. Briefly vortex the tube and then do a quick spin (less than 5000xg) to concentrate the liquid at the bottom.
5. Store the suspended plasmid at -20°C. The DNA is stable for at least one year from date of shipping when stored at -20°C.

RefSeq: [NM_153295.1](#), [NP_695207.1](#)

RefSeq Size: 2379 bp

RefSeq ORF: 2379 bp

Locus ID: 260430

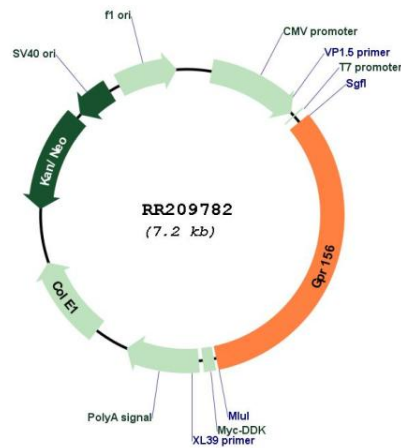
UniProt ID: [Q8K451](#)

Cytogenetics: 11q21

MW: 86.5 kDa

Gene Summary: seven transmembrane G protein coupled receptor [RGD, Feb 2006]

Product images:



Circular map for RR209782