

## Product datasheet for **RR209781**

### **Ptpn2 (NM\_053990) Rat Tagged ORF Clone**

#### Product data:

Product Type:	Expression Plasmids
Product Name:	Ptpn2 (NM_053990) Rat Tagged ORF Clone
Tag:	Myc-DDK
Symbol:	Ptpn2
Vector:	pCMV6-Entry (PS100001)
E. coli Selection:	Kanamycin (25 ug/mL)
Cell Selection:	Neomycin
ORF Nucleotide Sequence:	>RR209781 representing NM_053990 Red=Cloning site Blue=ORF Green=Tags(s)

TTTTGTAATACGACTCACTATAGGGCGGCCGGAATTCGTCGACTGGATCCGGTACCGAGGAGATCTGCC  
GCC**CGATCGCC**

ATGTCGGCTACCATCGAGCGGGAGTTTCGAGGAAGTGGATGCTCAGTGTGCTGGCAGCCGTTATACTTGG  
AAATTCGAAATGAATCCCATGACTATCCTCATAGAGTGGCCAAGTTCCAGAAAACAGAAATCGAAACAG  
ATACAGAGATGTAAGCCCATATGATCACAGTCGTGTTAAACTGCAGAGTGTGAAAATGATTATATTAAT  
GCCAGCTTAGTTGACATAGAAGAGGCACAAAGAAGTTACATCTTAACACAGGGCCCACTTCTAACACGT  
GCTGCCATTTCTGGCTCATGGTGTGGCAGCAAAAGACCAGAGCAGTTGTCATGCTAAACCGAACTGTAGA  
GAAAGAATCGGTTAAATGTGCACAGTACTGGCCAACGGATGACCGAGAGATGGTGTAAAGGAAACAGGA  
TTCAGCGTGAAGCTCTTATCTGAAGATGTGAAATCATATTATACAGTACATCTACTACAGTTAGAAAATA  
TCAATAGTGGTGAACAGAACCATATCTCACTTTCATTATACCACCTGGCCAGATTTTGGCGTTCGGGA  
GTCACCAGCTTCATTCTAAATTTCTTGTAAAGTTAGAGAATCTGGTCTTTGAACCTGACCATGGG  
CCTGCAGTGATCCATTGCAGTGCAGGCATCGGGCGTTCGGCACCTTCTCTTTGTAGATACCTGTCTCG  
TTCTGATGGAGAAAGGAGAGGATGTTAATGTGAAACAAATATTACTGAGTATGAGAAAGTATCGAATGGG  
ACTCATTACAGACTCCGGACCAGCTCAGATTCTCCTACATGGCCATAATAGAAGGAGCAAAGTATACAAAA  
GGAGATTCAAATATACAGAACAGAAACAATGACTGAGAAGTACAACGGGAAGAGAAATAGGGTCAGAAGATG  
AAAAGTTAACAGGACTTTCTTCTAAGGTTCCAGATACTGTGGAAGAGAGCAGTGAGAGTATTCTCCGGAA  
ACGCATTCCGAGAGGATAGAAAGGCTACAACCGCTCAGAAGGTGCAGCAGATGAGACAGAGGCTAAATGAA  
ACTGAACGGAAAAGGAAAAGGCCAAGATTGACAGACACC

**ACGCGT**ACGCGGGCCGCTCGAGCAGAAACTCATCTCAGAAGAGGATCTGGCAGCAAATGATATCTGGATT  
ACAAGGATGACGACGATAAGGTTTAA



[View online »](#)

**Protein Sequence:** >RR209781 representing NM\_053990  
 Red=Cloning site Green=Tags(s)

MSATIEREFEELDAQCRWQPLYLEIRNESHDPHRVAKFPENRNRNRYRDVSPYDHSRVKLSAENDYIN  
 ASLVDIEEAQRSYILTQGPLPNTCCHFWMVWQQKTRAVVMLNRTVEKESVKCAQYWPDDREMFKETG  
 FSVKLLSEDEVKSYTYVHLLQLENINSGETRTISHFYHTTWPDFGVPEPASFLNLFKVVRESGSLNPDHG  
 PAVIHCSAGIGRSGTFSLVDTCLVLMKGEDVNVKQILLSMRKYRMGLIQTPDQLRF SYMAIIEGAKYTK  
 GDSNIQNRMTKEYNGKRIGSEDEKL TGLSSKVPDVEESSESILRKRIREDRKATTAQKVQQMRQRLNE  
 TERKRKRRLTDT

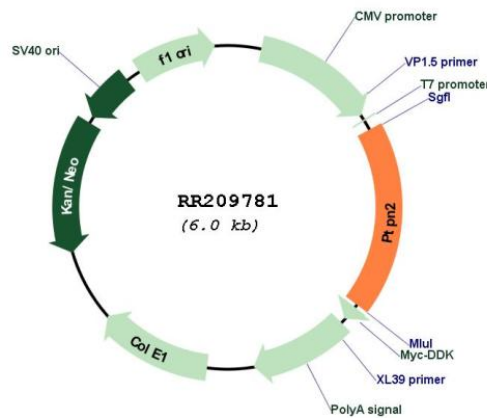
TRTRPLEQKLISEEDLAANDILDYKDDDDKV

**Restriction Sites:** SgfI-MluI

**Cloning Scheme:**



**Plasmid Map:**



**ACCN:** NM\_053990

<b>ORF Size:</b>	1089 bp
<b>OTI Disclaimer:</b>	The molecular sequence of this clone aligns with the gene accession number as a point of reference only. However, individual transcript sequences of the same gene can differ through naturally occurring variations (e.g. polymorphisms), each with its own valid existence. This clone is substantially in agreement with the reference, but a complete review of all prevailing variants is recommended prior to use. <a href="#">More info</a>
<b>OTI Annotation:</b>	This clone was engineered to express the complete ORF with an expression tag. Expression varies depending on the nature of the gene.
<b>Components:</b>	The ORF clone is ion-exchange column purified and shipped in a 2D barcoded Matrix tube containing 10ug of transfection-ready, dried plasmid DNA (reconstitute with 100 ul of water).
<b>Reconstitution Method:</b>	<ol style="list-style-type: none"><li>1. Centrifuge at 5,000xg for 5min.</li><li>2. Carefully open the tube and add 100ul of sterile water to dissolve the DNA.</li><li>3. Close the tube and incubate for 10 minutes at room temperature.</li><li>4. Briefly vortex the tube and then do a quick spin (less than 5000xg) to concentrate the liquid at the bottom.</li><li>5. Store the suspended plasmid at -20°C. The DNA is stable for at least one year from date of shipping when stored at -20°C.</li></ol>
<b>RefSeq:</b>	<a href="#">NM_053990.1</a> , <a href="#">NP_446442.1</a>
<b>RefSeq Size:</b>	1494 bp
<b>RefSeq ORF:</b>	1092 bp
<b>Locus ID:</b>	117063
<b>UniProt ID:</b>	<a href="#">P35233</a>
<b>Cytogenetics:</b>	18q12.1
<b>MW:</b>	42.2 kDa
<b>Gene Summary:</b>	binds DNA; has protein tyrosine phosphatase activity [RGD, Feb 2006]