

Product datasheet for **RR209725**

Lgmn (NM_022226) Rat Tagged ORF Clone

Product data:

Product Type:	Expression Plasmids
Product Name:	Lgmn (NM_022226) Rat Tagged ORF Clone
Tag:	Myc-DDK
Symbol:	Lgmn
Synonyms:	Prsc1
Vector:	pCMV6-Entry (PS100001)
E. coli Selection:	Kanamycin (25 ug/mL)
Cell Selection:	Neomycin
ORF Nucleotide Sequence:	>RR209725 representing NM_022226 Red=Cloning site Blue=ORF Green=Tags(s)

TTTTGTAATACGACTCACTATAGGGCGCCGGGAATTCGTCGACTGGATCCGGTACCGAGGAGATCTGCC
GCC**CGGATCGCC**

ATGATCTGGAAAGTGGCTGTGCTTCTCAGCCTAGTGCTGGGTGCTGGTGTTCACATCGGTGTGGATG
ACCCTGAGGACGGTGGCAAGCACTGGGTGGTATTGTGGCGGGCTCCAATGGCTGGTATAATTACCGACA
CCAGGCAGACGCATGCCACGCCTACCAGATCATCCACCGAACGGGATTCCTGACGAGCAGATCATAGTG
ATGATGTATGACGACATCGCCAACAATGAAGAAAACCCGACTCCAGGTGTGTGATCAACCGACCTAACG
GCACAGACGTGTACAAGGGAGTCCCAGGACTACACTGGAGAGGATGTGACTCCAGAGAATTTCTCGC
AGTGCTGAGAGGCGACGAAGAAGCTGTGAAGGGCAAAGGGTCCGAAAAGTCTTGAAGAGTGGGCCCCGG
GATCATGTATTTGTTTACTTCACCGACCACGGAGCCACTGGAATCCTGGTGTTCCTAACGAAGATCTTC
ATGTCAAGGACCTGAATAAGACTATTCGCTACATGTATGAGCACAAAATGTACCAGAAGATGGTGTTTTA
CATTGAAGCATGTGAGTCCGGCTCCATGATGAACCACCTGCCCGATGACATCGATGTTTATGCAACCACT
GCCGCCAACCCCAACGAGTCATCTTACGCCTGCTACTATGACGAGGAGAGGAGCACTTACCTGGTGACT
GGTACAGCGTCAACTGGATGGAAGATTCCGATGTGGAGGATCTGACCAAAGAGACACTTACAAGCAGTA
CCACCTGGTCAAGTCCCACCAACACCAGTCAGTCATGCAGTATGGGAACAAATCTATCTCTACCATG
AAAGTGATGCAGTTTCAAGGAATGAAGCACAGAGCCAGTTCACCCATCTCGCTGCCTCCAGTCACACACC
TTGACCTCACCCAGCCCTGACGTGCCCTGACCATCCTGAAAAGGAAGCTGCTGAGAACCAACAACAT
GAAGGAATCCCAAGTTCTCGTCGGGCAGATCCAGCACCTTCTGGATGCCAGGCACATCATTGAGAAGTCT
GTGCAAAAGATCGTTTCCCTGCTGGCAGGATTTGGGAAACTGCTCAGAAACATCTGTCAGAGAGAGCCA
TGCTCACAGCACATGACTGCCATCAGGAGGCCGTGACCCACTCCGCACACACTGCTTTAACTGGCACTC
AGTCACGTACGAGCATGCCTTGGGTATTTGTACGTGCTGGCCAACTCTGTGAGAAGCCATATCCGATT
GACAGGATAAAGATGGCCATGGACAAAGTGCCTTAGTCACTAC

ACGCGTACGCGGCCGCTCGAGCAGAAACTCATCTCAGAAGAGGATCTGGCAGCAAATGATATCCTGGATT
ACAAGGATGACGACGATAAGGTTTAA



[View online »](#)

Protein Sequence: >RR209725 representing NM_022226
 Red=Cloning site Green=Tags(s)

MIWKVAVLLSLVLGAGAVHIGVDDPEDGGKHWVIVAGSNGWYNYRHQADACHAYQIIHRNGIPDEQIIV
 MMYDDIANNEENPTPGVVINRPNGTDVYKGVPKDYTGEDVTPENFLAVLRGDEEAVKKGKSGKVLKSGPR
 DHVFFVYFDHGATGILVFPNEDLHVKDLNKTIRYMYEHKMYQKMFYIEACESGSMNHLRDDIDVYATT
 AANPNESYACYDEERSTYLGDWYSVNWMESSDVEDLTKETLHKQYHLVKSHTNTSHVMQYGNKSI STM
 KVMQFQGMKHRASSPISLPPVTHLDLTPSPDVPLTILKRKLLRTNMMKESQVLVGQIQHLLDARHIEKS
 VQKIVSLLAGFGETAQKHLSERAMLTAHDCHEAVTHFRTHCFNWSVTYEHALRYLYVLANLCEKPYPI
 DRIKMAMDKVCLSHY

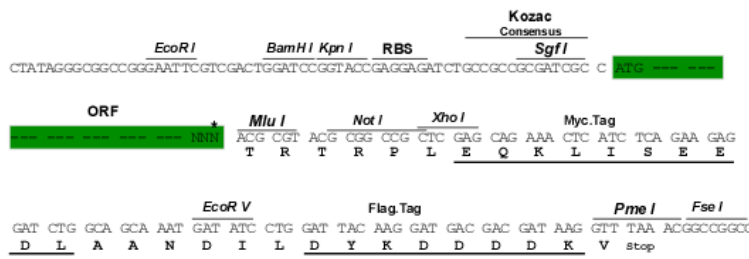
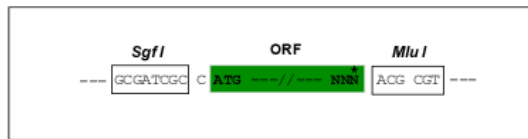
TRTRPLEQKLISEEDLAANDILDYKDDDDKV

Restriction Sites:

SgfI-MluI

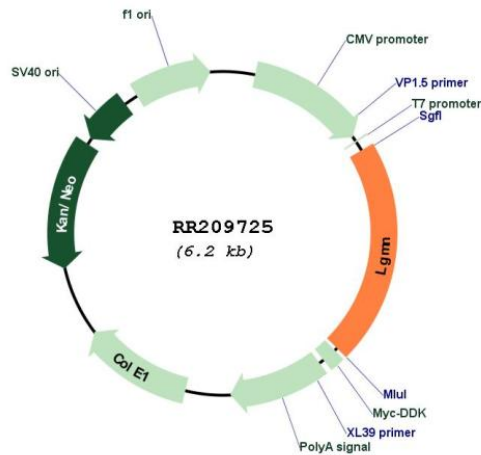
Cloning Scheme:

Cloning sites used for ORF Shuttling:



* The last codon before the Stop codon of the ORF

Plasmid Map:



ACCN:

NM_022226

ORF Size:	1305 bp
OTI Disclaimer:	The molecular sequence of this clone aligns with the gene accession number as a point of reference only. However, individual transcript sequences of the same gene can differ through naturally occurring variations (e.g. polymorphisms), each with its own valid existence. This clone is substantially in agreement with the reference, but a complete review of all prevailing variants is recommended prior to use. More info
OTI Annotation:	This clone was engineered to express the complete ORF with an expression tag. Expression varies depending on the nature of the gene.
Components:	The ORF clone is ion-exchange column purified and shipped in a 2D barcoded Matrix tube containing 10ug of transfection-ready, dried plasmid DNA (reconstitute with 100 ul of water).
Reconstitution Method:	<ol style="list-style-type: none">1. Centrifuge at 5,000xg for 5min.2. Carefully open the tube and add 100ul of sterile water to dissolve the DNA.3. Close the tube and incubate for 10 minutes at room temperature.4. Briefly vortex the tube and then do a quick spin (less than 5000xg) to concentrate the liquid at the bottom.5. Store the suspended plasmid at -20°C. The DNA is stable for at least one year from date of shipping when stored at -20°C.
RefSeq:	NM_022226.2 , NP_071562.2
RefSeq Size:	1843 bp
RefSeq ORF:	1308 bp
Locus ID:	63865
UniProt ID:	Q9R0J8
Cytogenetics:	6q32
MW:	49.5 kDa
Gene Summary:	putative cysteine protease [RGD, Feb 2006]