

Product datasheet for **RR209705**

Fiz1 (NM_001106223) Rat Tagged ORF Clone

Product data:

Product Type:	Expression Plasmids
Product Name:	Fiz1 (NM_001106223) Rat Tagged ORF Clone
Tag:	Myc-DDK
Symbol:	Fiz1
Synonyms:	RGD1306359
Vector:	pCMV6-Entry (PS100001)
E. coli Selection:	Kanamycin (25 ug/mL)
Cell Selection:	Neomycin



[View online »](#)

ORF Nucleotide Sequence:

>RR209705 representing NM_001106223
 Red=Cloning site Blue=ORF Green=Tags(s)

TTTTGTAATACGACTCACTATAGGGCGGCCGGAATTCGTCGACTGGATCCGGTACCGAGGAGATCTGCC
 GCC**GCGATCGCC**

ATGGATGACCCTCGCTTCTGTGGTTCCTGCTGCTCCAGGGCCAGGCCATCTGCCACTGCGCCTCGGG
 TCCCTTTCACTGCAGCGAATGTGGCAAGAGCTTCCGTTACCGATCCGACCTGAGGCGCCATTTTGTCTG
 ACACACAGCGCTCAAGCCCCACGCATGTCTCGATGCGGCAAGGGCTTCAAGCATAGCTTCAACTTGGCT
 AACCACTGCGCTCACACACCGGTGAGCGACCCTACCGATGTTCCGCTGCCCTAAGGGATTCCGAGACT
 CCACTGGCTGCTGCACCACCAGGTGTCACACTGGTGAGAAGCCCTACTGCTGTTTGGTCTGCGAGCT
 CCGCTTCTCTCGCTCCAGCTGGGCCGCCATCTCAAGCGTCAGCACCGGGGCACACTTCCCTCTCCC
 CTGCAGCTAGCCCGGCTGCCCTTCCCTGAGCTCCCCCTGCTCAGTATGTTGCAACGTTGGTCCCTGCT
 CAGTTTGTGGAGGTGGAGGTCCGGTGGAGGAGAGGGCTGGAGGAGCTGGAGCGACCAGCTGGGGACT
 GGCAGAGGCTGCAGCAGCTGCGGACGCTTCGCTGCCCCATTTGCATGTGGTGCCTGTGCCAGGCGTTTT
 GACCATGGTCCGGAGCTGGCAGCCCACTGGGCTGCACACACTGATGTGAAGCCATTCAAGTGCCCGGCTT
 GTGAGCGCGACTTCAATGCACCTGCGCTGCTGGAACGCCACAAGCTCACACACGACTGCAGGGGAGCAG
 TGCACCTCCAACACAGGTTTGGGCTCCGGTGGGGCTCCAGAGGTGGCAGGAGAGGGTGACACAGCGGAG
 GTGGGGGCCACCCCAACTTGGGACGCGGGCTACTCTGAGCCCTACTGGTGCAGGCGTTCCCAAAAC
 TGGAGGCACTGCTTCCGAGGATGAGGGCGCTGGGAATGCCAGGCTCCGGCTGCGGCAGCCGAAGCATC
 CTCAGAAGACACTGTACCAATGCGACTGCGGGACCTTCTTCGCGTCTGCCCTGCTTTAGCCAGCCAT
 CTAGAGGCGCACTTGGCCAGCCACGTACGGCTGTGGCCATTGCGGGCGCTGTACGCAGCACTGGCCG
 CCCTGGAGGAGCATCGGCTGCAAGCCATGGTAAGGGCAGCGGGGAGCCCGGACGCTGAGGGTGA
 GCAGGTGGCTGGAGGGCCCGGACCCGGTTCCTCCAGCCGTGGCAAGAAAATCTTTGGCTGTTCTGAGTGC
 GAGAAGTTGTTCCGCTCTCCTCGAGACCTGAAAAGGCATGTGCTGGTCCATACTGGGGAAAAGCCATTCC
 CGTGCCTGGAGTGTGGCAAGTTCTTCCGCCATGAGTGCTACCTCAAGCGTCACCGGCTGCTGCATGGCAC
 AGAGCGGCCCTTCCCTGCCACATCTGTGGCAAGGGCTTCATCACGCTTAGCAACCTCTCCAGGCACCTG
 AAGCTACACAGGGGATGGAC

ACGCGTACGCGGCCGCTCGAGCAGAACTCATCTCAGAAGAGGATCTGGCAGCAAATGATATCTGGATT
 ACAAGGATGACGACGATAAGGTTTAA

Protein Sequence:

>RR209705 representing NM_001106223
 Red=Cloning site Green=Tags(s)

MDDPSLPVVAAPGPAPSATAPRVFHCSECGKSFYRSDLRHFARHTALKPHACPRCGKGFKHSFNLA
 NHLRSHTGERPYRCSACPKGFRDSTGLLHHQVVHTGEKPYCCLVCELRFSSRSLGRHLKRQHRGTLPS
 LQPSGLPPLSSPCSVCCNVGPCVCGGGSGGEGLEGAGATSWGLAEAAAAAASLPPFACGACARRF
 DHGRELAHWAHATDVKPFKPCRDFNAPALLERHKLTHDLQSSAPPTQVWASGGAPEVAGEGDTAE
 VGATPPTWDAGLLLSPAGVVKLEALLPEDEGAGNAQAPAAAAEASSEDLYQCDCGTFASAPALASH
 LEAHSGPATYGCCHGALYAALAALEHRRASHGKGSGEAAPDGEQVAGGPGPGSSSRGKKIFGCSEC
 EKLFRRSPDLERHVLVHTGEKPFPCLECGKFRHECYLKRHLLHGTERPFPPCHICGKGFITL SNLSRHL
 KLHRGMD

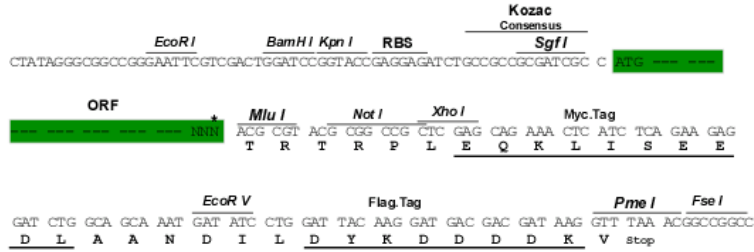
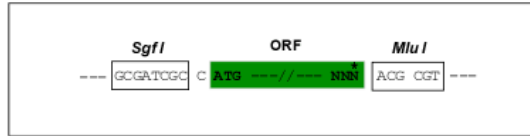
TRTRPLEQKLISEEDLAANDILDYKDDDDKV

Restriction Sites:

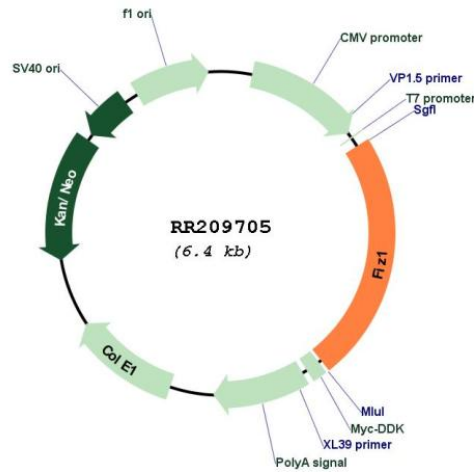
Sgfl-MluI

Cloning Scheme:

Cloning sites used for ORF Shuttling:



* The last codon before the Stop codon of the ORF

Plasmid Map:


ACCN: NM_001106223

ORF Size: 1491 bp

OTI Disclaimer: The molecular sequence of this clone aligns with the gene accession number as a point of reference only. However, individual transcript sequences of the same gene can differ through naturally occurring variations (e.g. polymorphisms), each with its own valid existence. This clone is substantially in agreement with the reference, but a complete review of all prevailing variants is recommended prior to use. [More info](#)

OTI Annotation: This clone was engineered to express the complete ORF with an expression tag. Expression varies depending on the nature of the gene.

Components: The ORF clone is ion-exchange column purified and shipped in a 2D barcoded Matrix tube containing 10ug of transfection-ready, dried plasmid DNA (reconstitute with 100 ul of water).

Reconstitution Method:

1. Centrifuge at 5,000xg for 5min.
2. Carefully open the tube and add 100ul of sterile water to dissolve the DNA.
3. Close the tube and incubate for 10 minutes at room temperature.
4. Briefly vortex the tube and then do a quick spin (less than 5000xg) to concentrate the liquid at the bottom.
5. Store the suspended plasmid at -20°C. The DNA is stable for at least one year from date of shipping when stored at -20°C.

RefSeq: [NM_001106223.1](#), [NP_001099693.1](#)

RefSeq Size: 2655 bp

RefSeq ORF: 1494 bp

Locus ID: 292584

Cytogenetics: 1q12

MW: 52.4 kDa