

## Product datasheet for **RR209701**

### Wdr33 (NM\_001107398) Rat Tagged ORF Clone

#### Product data:

**Product Type:** Expression Plasmids  
**Product Name:** Wdr33 (NM\_001107398) Rat Tagged ORF Clone  
**Tag:** Myc-DDK  
**Symbol:** Wdr33  
**Vector:** pCMV6-Entry (PS100001)  
**E. coli Selection:** Kanamycin (25 ug/mL)  
**Cell Selection:** Neomycin  
**ORF Nucleotide Sequence:** >RR209701 representing NM\_001107398  
Red=Cloning site Blue=ORF Green=Tags(s)

TTTTGTAATACGACTCACTATAGGGCGGCCGGAATTCGTCGACTGGATCCGGTACCGAGGAGATCTGCC  
 GCCCGATCGCC

ATGGCTACAGAAATTGGCTCTCCTCCACGATTTTTCCATATGCCGAGGTTCCAGCACCAGGCTCCCCGAC  
 AGTTGTTCTATAAGCGGCTGACTTTGCACAGCAGCAGGCAATGCAGCAGCTCACCTTTGACGGGAAGCG  
 GATGAGAAAGGCCGTGAACCGAAAACCATAGACTACAACCCTCTGTCATTAAGTATTTGGAGAATAGG  
 ATATGGCAAAGAGATCAGAGAGATATGCCGGCAATTCAGCCGGATGCAGGTTATTATAATGATCTGGTCC  
 CACCTATAGGAATGTTGAATAATCCTATGAATGCAGTAACAACGAAATTTGTTAGGACATCAACAAACAA  
 AGTAAATGCCAGTGTTGTTGTGAGGTGGACCCGGAAGGAAGACGGTTGGTCACTGGAGCTTCTAGT  
 GGGGAGTTCACCTTGTTGAAACGGGCTGACTTTCAACTTTGAAACCATATTGCAGGCTCATGATAGCCCTG  
 TGAGGGCCATGACTTGGTACATAATGACATGTGGATGTTGACAGCAGATCATGGAGGATATGTAAATA  
 TTGGCAATCCAACATGAACAACGCAAGATGTTCCAGGCACATAAGGAGGCGATTAGAGAGGCCAGTTTC  
 TCACCCACGGATAATAAATTTGCTACATGCTCTGATGACGGCACTGTTAGAATCTGGGATTTTCTCGTT  
 GCCATGAGGAAAGATTCTCCGAGGTGATGGTGTGATGTGAAGTGTGATGATTGGCATCCAACCAAGG  
 GTTGGTTGTTTCAGGAAGTAAAGATAGCCAGCAGCAATCAAGTTCTGGGACCCCAAGACTGGGCAGAGT  
 CTTGCAACACTTCACGCCATAAAAAACACGGTGATGGAAGTGAATTAACCTCAACGGCAACTGGCTCC  
 TCACGGCTCTCGTGACCATCTCTGTAAGCTTTTCGATATCCGAAACCTGAAAGAAGAGCTTCAGGTATT  
 CCGAGGTCAACAAGGAAGCCACAGCTGTAGCCTGGCATCCTGTCCACGAAGGACTTTTTGCCAGCGGA  
 GGATCCGACGGCTCCTTGTATTCTGGCACGTTGGGGTGGAGAAGGAAGTAGGTGGGATGGAGATGGCCC  
 ACGAAGGGATGATCTGGAGTTTGGCTTGGCATCCTCTGGGACATATTCTCTGCTCGGGCTCAAATGACCA  
 TACCAGCAAATTTGACTCGAAATCGGCCAGGTGACAAAATGCGAGATCGATATAATCTGAACCTTTTA  
 CCTGGCATGTGAGAAGCGGAGTAGAGTATGATGACCTGGAACCTAATAGCCTGGCAGTATTCCAGGGA  
 TGGGAATCCAGAACAACTGAAACTGGCCATGGAGCAGGAGCAGATGGGGAAGATGAATCAAATGACAT  
 TGAATGACAATTCAGGCTTGATTGGGGAATGGAAGAAGTAATGCAAAAAGGATCAGAAAAAAGTTCTCT  
 CAGAAGAAAGTCCCTTATGCAAAGCCATTCTGCTCAGTTCCAGCAGGCTGGATGCAAAAATAAGTTCC  
 CAATTCCTGCTCAAATGAGGTGCTGAATGACAGGAAAGAGGATATTAAGCTAGAAGAGAAGAAAAAAC  
 ACAAGCAGAAATCGAGCAAGAAATGGCCACGCTGCAGTATACCAACCCACAGCTTTTAGAGCAACTTAAA



[View online »](#)

ATTGAAAGGCTTGCCCAAGCAGGCCGATCAGATCCAGCCTCCTCCCTCGTCTGGTACTCCTCTCCTCG  
GACCTCAGCCCTTTTCTGGTCAAGGCCAATGTCTCAGATCCCTCAAGGTTTTTCAGCAGCCTCACCACATC  
TCAGCAGATGCCATTGGTGGCTCAAATGGGGCCTCCAGGTCCACAGGGCCAGTTCAGAGCCCTGGACCC  
CAGGGACAAATGGGACCACAAGGCCCTCCATTGCATCAAGGAGGTGGGGGGCCACAAGGATTCATGGGAC  
CACAAGGACCCAGGGCCCTCCCAGGGTCTGCCACGGCCTCAGGACATGCATGGTCCACAAGGAATGCA  
GAGGCACCCTGGACCTCATGGCCCTTTGGGACCTCAAGGGCCACCCGGACCTCAAGGTAGTCTGGTCTC  
CAAGGTCAATGGTCTCAGGGTCCACCAGGACCTCAGGGTCAATTGGCCCCCAAGGCCACCTGCTC  
CTCAGGGCCATATGGGCCACAGGGTCTCCTGGTACTCAAGGAATGCAGGGACCACCTGGTCCAGAGG  
AATGCAAGGACCTCCTCATCCTCATGGGATACAGGGTGGGCCAACATCTCAAGGGATCCAGGGACCTCTG  
ATGGGACTGAATCCAAGAGGAATGCAGGGACCCCAAGGACCTCGGGAGAATCAGGGTCTGCTCCTCAAG  
GGATAATGATTGGCCATCCACCTCAGGAGATGAGAGGACCACATCCTCCAAGTGGACTGTGGGACATGG  
CCCTCAGGAAATGAGAGGTCTCAGGAGATGCGGGGCATGCAGGGGCTCCACCACAGGGGTCAATGTTG  
GGCCCTCCCAGGAACTTCGAGGACCTCAGGTTACAGGGGCAGCAGGGGCCACCCAGGGCTCTTTGG  
GACCTCCACCCAGGGTGGCATGCAAGGACCCCTGGACCTCAGGGACAACAGAACCAGGCAAGAGGGCC  
ACATCCATCTCAAGGGCCAATACCATTCCAGCAGCAGAAAAGCACCTCTGCTAGGTGATGGCCCCGGGCC  
CCCTTCAATCAGGAAGGACAGAGTACAGGTCCCCACCCCTTGATACCAGGCCTAGGGCAACAGGGAGCAC  
AAGGCCGATTCCTCTGAACCCTGGACAAGGACCCGGCCCTAACAAAGGTGACTCTCGAGGCCCTCC  
CAACCATCACCTGGGCCCATGTGAGAGAGGGCGCATGAGCAGAGCGGTGGTCTGAGCATGGTCTGAC  
AGGGGACCTTTCCGGGTGGCCAGGACTGCAGGGGTCTCCTGACAGGCTGGCTCTCACCTGATTTCC  
CTGATGACTTCAGCAGACCAGATGACTTCCATCCTGACAAGCGCTTTGGCCACCGGTTACGGGAATTCGA  
GGGACGAGGAGGACCTTACCACAAGAAGAAAAGTGGAGGCGAGGGGGCCCTGGACCTCCCTTCCACCT  
GATCACAGGGAGTTCAATGAGGGGACGGCCGGGTGCAGCCGAGGCCCTCCAGGGCATGGGAAGGCC  
GCAGACCTGGAGACGAACGATTCCTCCCGGATCCTGATGACCCAGGATTCGAGGGCGCAGAGAAGAAAG  
CTTTAGAAGAGGTGCTCCCCAAGACACGAAGGCCGTGCTCCTCCAAGAGGAAGGACAACCTTCTGGT  
CCTGATGACTTTGGTCCAGAAGAGGTTTTCGATGCTTCTGATGAAGCAGCCGAGGACGAGATCTCAGAG  
GTCGAGGCCGTGGCACCCCTAGAGGGGGATCCAGGAAGTGCTTACTCCCCACTCCTGATGAGTTTCTCG  
CTTTGAAGGAGGACGGAAGCCAGACTCCTGGATGGAAACCGAGAGCCCGGACCAGGTGATGAACACTTT  
CGTATGCTCCCCGTCTGATCATCCCCCTCACGATGGCCATTACCAGCTAGCAGAGAGCGCTCCTCTT  
CTCTCAAAGGCATGGACATGGCCTCCCTACCACCCGGAAGCGCCCTGGCATGATGGTTCGGGCACTTC  
TGAACACAGAGAGATGGAGGCCAAGGAGGCCCTCGGAGGACCGAGGAAGCAAAGGCCGAGGGGGCCCA  
GGACCTTCCCAGAGAGTCCAAAATCCGGGCGTTCAGCTCTTTGGACGGAGACCATCATGATGGATACC  
ACAGAGATGAACCTTTTGGTGGCCCTCCAGGCAGCAGCTCATCTTCTCGAGGGGGCCGGAGTGGCAGTAA  
CTGGGGTAGAGGGAGTAACATGAACTCTGGCCCTCCAAGGAGAGGCACTTCAAGAGGTAGTGGGAGGGT  
CGG

ACGCGTACGCGGCCGCTCGAGCAGAACTCATCTCAGAAGAGGATCTGGCAGCAATGATATCCTGGATT  
ACAAGGATGACGACGATAAGGTTTAA

Protein Sequence: >RR209701 representing NM\_001107398  
 Red=Cloning site Green=Tags(s)

MATEIGSPRRFFHMPRFQHQAPRQLFYKRPDFAQQAMQQLTFDGKMRKAVNRKTIIDYNPSVIKYLENR  
 IWQRDQRDMRAIQPDAGYYNDLVPPIGMLNPNMNAVTTKFRVSTNKVKCPVVFVVRWTPGRRLLVTGASS  
 GEFTLWNGLTFNFETILQAHDSPVRAMTWSHNDMWMMLTADHGGYVKYQSNMNNVKMFQAHKEAIREASF  
 SPTDNKFATCSDDGTVRIWDFLRCHAEIRLRHGADVKCVDWHPTKGLVVSQKSDSQPIKFWDPKGTQS  
 LATLHAHKNTVMEVKLNLNGNWLLTASRDHLCKLFDIRNLKEELQVFRGHKKEATAVAWHPVHEGLFASG  
 GSDGSLLFWHVGVKEVGGMEMAHEGMIWLSAWHPLGHILCSGSNDHTSKFWTRNRPDGKMRDRYLNLL  
 PGMSEGDVEYDDLEPNSLAVIPGMGIPEQLKLAMEQEOMGKDESNDIEMTIPGLDWGMEEVMQDKQKVP  
 QKKVPIYAKPIPAQFQQAWMQNKVIPAPNEVLNDRKEDIKLEEKKTQAEIEQEMATLQYTNPQLLEQLK  
 IERLAQKQADQIQPPSSGTPLLGPQFSGQGPMSQIPQGFQQPHPSQQMPLVAQMGPQGPQGFRAQGP  
 QGQMGPPQGPLHQGGGGPQGMGPQGPQGLPRPQDMHGPQGMQRHPGPHGLPQGPQGPQSSGP  
 QGHMGPQGPQGHIGPQPPAPQGHMGPQGPQGMQGPQGMQPPRGMQPPHPHGIQGGPTSQGIQGPL  
 MGLNPRGMQGPQPPRENQGPAPQGIIMIGHPPQEMRGPHPPSGLLGHGPQEMRGPQEMRGMQGPQGSML  
 GPPQELRGPSSGQQGPPQGSLLGPPQGMQGPQGPQGNPARGPHPSQGPPIPFQKQKAPLLGDGPRP  
 PFNQEQSTGPPPLIPGLGQQAQGRIPPLNPGQGPQGNKGDSTRGPPNHLGPMSEERRHEQSGGPEHGP  
 RGPFRGGQDCRGPDRRGSHPDFPDDSRPDDFHPDKRFHRLREFEGRGGLPQEEKWRRGGPFPFP  
 DHREFNEGDGRGAARPPGAWEGRRPGDERFRDPPDRFRGRREEFRRGAPPRHEGRAPPRGRDNFPG  
 PDDFGPEEVFDASDEAARGDLRGRGRGTPRGSRKCLLTPDEFPRFEGGRKPDSDWGNREPGGHEHF  
 RDAPRPDHPHDGHPASRERSSSLQGMASLPPRKRPHWDGSGTSEHREMAQGGPSEDRGSKGRGGP  
 GPSQRVPSGRSSSLDGDHHDGYHRDEPFGGPPGSSSSSRGGRSGSNWGRGSMNSGPPRRGTSRSGSRG  
 R

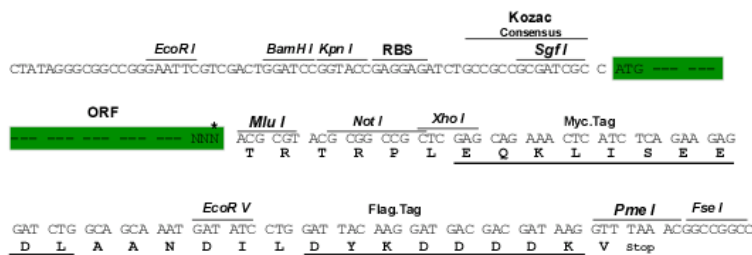
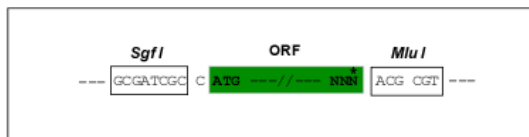
TRTRPLEQKLISEEDLAANDILDYKDDDDKV

Restriction Sites:

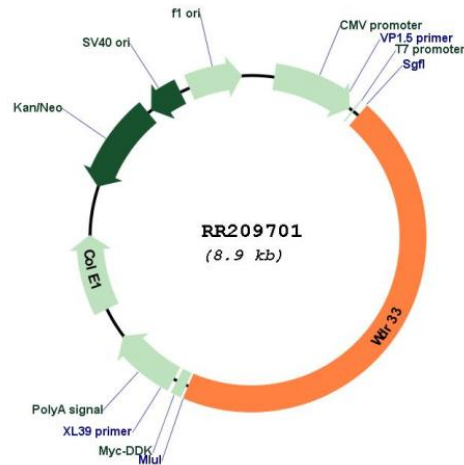
SgfI-MluI

Cloning Scheme:

Cloning sites used for ORF Shuttling:



\* The last codon before the Stop codon of the ORF

**Plasmid Map:**


**ACCN:** NM\_001107398

**ORF Size:** 3993 bp

**OTI Disclaimer:** The molecular sequence of this clone aligns with the gene accession number as a point of reference only. However, individual transcript sequences of the same gene can differ through naturally occurring variations (e.g. polymorphisms), each with its own valid existence. This clone is substantially in agreement with the reference, but a complete review of all prevailing variants is recommended prior to use. [More info](#)

**OTI Annotation:** This clone was engineered to express the complete ORF with an expression tag. Expression varies depending on the nature of the gene.

**Components:** The ORF clone is ion-exchange column purified and shipped in a 2D barcoded Matrix tube containing 10ug of transfection-ready, dried plasmid DNA (reconstitute with 100 ul of water).

**Reconstitution Method:**

1. Centrifuge at 5,000xg for 5min.
2. Carefully open the tube and add 100ul of sterile water to dissolve the DNA.
3. Close the tube and incubate for 10 minutes at room temperature.
4. Briefly vortex the tube and then do a quick spin (less than 5000xg) to concentrate the liquid at the bottom.
5. Store the suspended plasmid at -20°C. The DNA is stable for at least one year from date of shipping when stored at -20°C.

**RefSeq:** [NM\\_001107398.2](#), [NP\\_001100868.2](#)

**RefSeq Size:** 4525 bp

**RefSeq ORF:** 3996 bp

**Locus ID:** 307524

**Cytogenetics:** 18p12

**MW:** 145.4 kDa