

Product datasheet for **RR209684**

Amh (NM_012902) Rat Tagged ORF Clone

Product data:

Product Type:	Expression Plasmids
Product Name:	Amh (NM_012902) Rat Tagged ORF Clone
Tag:	Myc-DDK
Symbol:	Amh
Synonyms:	MIS
Vector:	pCMV6-Entry (PS100001)
E. coli Selection:	Kanamycin (25 ug/mL)
Cell Selection:	Neomycin



[View online »](#)

ORF Nucleotide Sequence:

>RR209684 representing NM_012902
 Red=Cloning site Blue=ORF Green=Tags(s)

TTTTGTAATACGACTCACTATAGGGCGGCCGGAATTCGTCGACTGGATCCGGTACCGAGGAGATCTGCC
 GCC**GCGATCGCC**

ATGACAGGGCCACACCTCTCTCTGCTGCTGCTGCTAGCGACTATGGGGCTGTGTTACAGGCTGACA
 CAGTTGAAGAAGTACCAATACAGGGGCTCATCTTCTTGAAGATGGGGTCTGGCCTCCAGCAGTCC
 CCCTGAGCCTTTGTGCCTGGTGGCGGTGAGAGGGGAAGGGGACACAAGCAAGGCTTCCCTGACGGTGGT
 GGGGGCTGCACAGCTATGAGCATGCCTTCTGGAGGCTGTTCAAGAGTCTCGCTGGGGACCTCAAGACC
 TAGCCACCTTCGGAGTCTGCAGTACTGACTCCCAGACTACCCTGCCTGCCCTTACAGCCTCGGGCCTG
 GCTCGGAGAGACTGGGAACAGCAGTTGCTAGTCTACATCTGGTGAAGTGATATGGGAGCCTCAGCTC
 TTGCTGAAGTTCCAAGAGCCTCCACCTGGGGGAGCCAGCCGCTGGGAGCAAGCCCTGTTAGTGCTATACC
 CTGGACCTGGGCCCAGGTCACAGTACAGGAGCTGGACTGCAGGGCACACAGAGCCTCTGCCCTACTCG
 GGACACCCGCTATTTGGTCTGACTGTGCACTTCCAGCGGGGCTGGAGCGGCTCGGGGCTCGCCCTA
 ACCCTTCAACCAAGCAAAGAAGGTGCCACCCTGACCATCGCTCAGCTGCAGGCCTTCTGTTTGGCTCTG
 ATTCGCGTGTTCACGCGGATGACTCCCACCCTAGTGCTGCTGCCACCCACCGGCCGACACCGCAGCC
 AGCACATGGCCAGCTGGACACCGTGCCTTCCCGCAGCCTGGGCTGTCCCTGGAGCCTGAGGACCTGCCA
 CACAGTGTGACCCCTTCTAGAGACCCTCACTCGCTTGGTTCGTGCTCTGCGGGACCTCTGACCCGGG
 CCTCGAACACTCGTCTGGCCCTGGACCTGGTGCCTGGCCAGCTTCCACAGGGCCTGGTCAACCTTTC
 AGACCCGTGGCGCTGGGACGTCTGCTCGATGGGAGGAACCCCTATTACTGTGCTGTCAACCCGCTGCG
 GCCACTGTGGGGAAACCTATGCGGCTGCACAGCCACATCTGCTCCCTGGGCAGCAGCCTGGCACGCA
 GGGTAGCGGTAGAGCTGCAGGCAGCGCCCTCGGAGCTGCGGGACCTCCAGGCCTGCCACCCACAGCCCC
 CCCATTGCTGTGCGCCTACTGGCGCTGTGCCCAACGACTCCCGCAGCGCCGGGACCCGCTGCGAGCG
 CTGCTGCTGCTGAAGGCACTGCAGGCTGCGTGCAGAGTGGCGAGGGCGGAAGGGCGCGGAGGGCGG
 GGCGCAGCAAGGGGACAGGGACAGATGGGCTGTGCGCGCTGCGCGAGCTGAGCGTGGACCTTCGAGCAGA
 GCGCTCAGTGTGCTATCCCGGAGACCTACCAAGCCAACAAGTCCCAAGGCGCCTGTGATGGCCACAGTGC
 GACCGTAACCCACGGTACGGGAACACGTGGTGTGCTGCTGCTAAAATGCAGGCACGCGGGGCCCTGG
 GTCGCTGCCCTGCTGTGTGCCACTGCCTACCCGCAAGCTGCTCATCAGCCTGTCGGAGGAGACAT
 CAGCGCGCACACGTGCCAACATGGTGGCTACCGAATGCGGCTGCCGG

ACGCGTACGCGGCCGCTCGAGCAGAAACTCATCTCAGAAGAGGATCTGGCAGCAAATGATATCCTGGATT
 ACAAGGATGACGACGATAAGGTTTAA

Protein Sequence:

>RR209684 representing NM_012902
 Red=Cloning site Green=Tags(s)

MQGPHLSLLLLLATMGA VLQADTVEEL TNTRGLIFLEDGVWPPSSPPEPLCLVAVRREGDTSKASLTVV
 GGLHSYEHAFLEAVQESRWGPQDLATFGVCSTDSQTTLPALQRLGAWLGETGEQQLVLHLAEVIWEPQL
 LLKFQEPGGASRWEQALLVLYPGPGQVTVTGAGLQGTQSLCPTRDTRYLVLTVHFPAWAGSGLAL
 TLQPSKEGATLTIAQLQAF LFGSDSRCFTRMPTLVLLPPTGPTPQPAHQQLDTPFPQPGLSLEPEDLP
 HSADPFLETLTRLV RALRGPLTRASNRLALDPGALASFPQGLVNLSDPVALGRLLDGEPELLLLLSPAA
 ATVGEPMRLHSPTSAPWAAGLARRVAVELQAAASELRDLPLPPTAPPLSRLALCPNDSRSAGDPLRA
 LLLLKALQGLRAEWREGREGRGRAGRSKGTGTDGLCALREL SVDLRAERSVLIPETYQANNCQGACAWPQS
 DRNPRYGNHVLLLLKMQARGAALGRLPCCVPTAYTGKLLISLSEEHISAHHVPMNVATECGCR

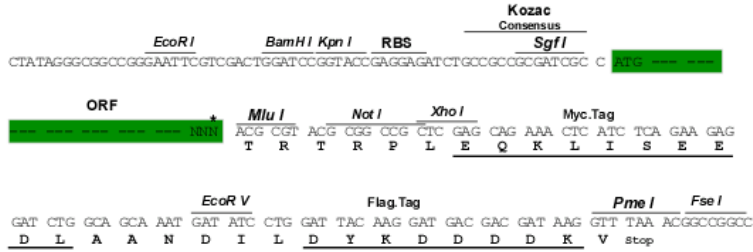
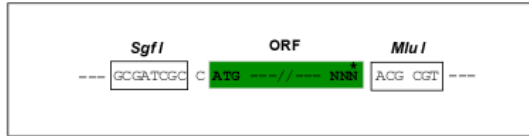
TRTRPLEQKLISEEDLAANDILDYKDDDDKV

Restriction Sites:

SgfI-MluI

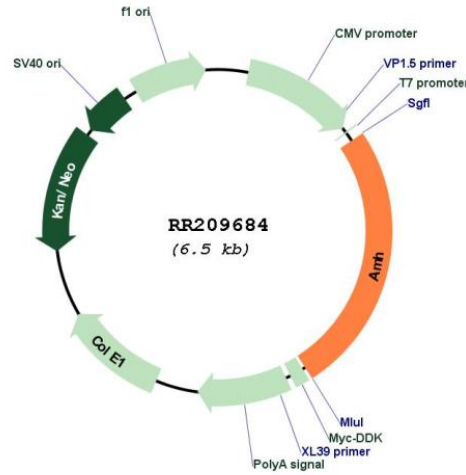
Cloning Scheme:

Cloning sites used for ORF Shutting:



* The last codon before the Stop codon of the ORF

Plasmid Map:



ACCN:	NM_012902
ORF Size:	1659 bp
OTI Disclaimer:	The molecular sequence of this clone aligns with the gene accession number as a point of reference only. However, individual transcript sequences of the same gene can differ through naturally occurring variations (e.g. polymorphisms), each with its own valid existence. This clone is substantially in agreement with the reference, but a complete review of all prevailing variants is recommended prior to use. More info
OTI Annotation:	This clone was engineered to express the complete ORF with an expression tag. Expression varies depending on the nature of the gene.
Components:	The ORF clone is ion-exchange column purified and shipped in a 2D barcoded Matrix tube containing 10ug of transfection-ready, dried plasmid DNA (reconstitute with 100 ul of water).
Reconstitution Method:	<ol style="list-style-type: none">1. Centrifuge at 5,000xg for 5min.2. Carefully open the tube and add 100ul of sterile water to dissolve the DNA.3. Close the tube and incubate for 10 minutes at room temperature.4. Briefly vortex the tube and then do a quick spin (less than 5000xg) to concentrate the liquid at the bottom.5. Store the suspended plasmid at -20°C. The DNA is stable for at least one year from date of shipping when stored at -20°C.
RefSeq:	NM_012902.1 , NP_037034.1
RefSeq Size:	1662 bp
RefSeq ORF:	1662 bp
Locus ID:	25378
UniProt ID:	P49000
Cytogenetics:	7q11
MW:	58.9 kDa
Gene Summary:	ligand for MIS receptor II that suppresses female primary and secondary sexual development and allows male sexual differentiation to occur [RGD, Feb 2006]