

Product datasheet for RR209678L3

Kcnh8 (NM_145095) Rat Tagged Lenti ORF Clone

Product data:

Product Type:	Expression Plasmids
Product Name:	Kcnh8 (NM_145095) Rat Tagged Lenti ORF Clone
Tag:	Myc-DDK
Symbol:	Kcnh8
Synonyms:	Elk1; ELK3; Ets-1
Mammalian Cell Selection:	Puromycin
Vector:	pLenti-C-Myc-DDK-P2A-Puro (PS100092)
E. coli Selection:	Chloramphenicol (34 ug/mL)
ORF Nucleotide Sequence:	The ORF insert of this clone is exactly the same as(RR209678).
Restriction Sites:	SgfI-MluI
Cloning Scheme:	

Cloning sites used for ORF Shuttling:



* The last codon before the Stop codon of the ORF.

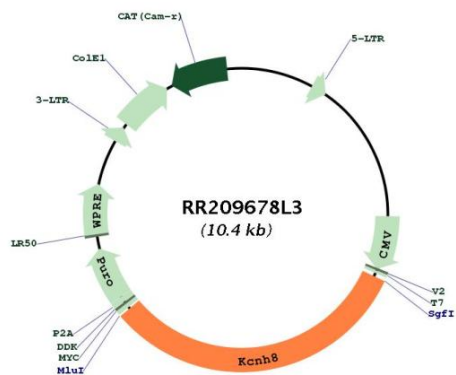
ACCN:	NM_145095
ORF Size:	3306 bp



[View online »](#)

OTI Disclaimer:	The molecular sequence of this clone aligns with the gene accession number as a point of reference only. However, individual transcript sequences of the same gene can differ through naturally occurring variations (e.g. polymorphisms), each with its own valid existence. This clone is substantially in agreement with the reference, but a complete review of all prevailing variants is recommended prior to use. More info
OTI Annotation:	This clone was engineered to express the complete ORF with an expression tag. Expression varies depending on the nature of the gene.
Components:	The ORF clone is ion-exchange column purified and shipped in a 2D barcoded Matrix tube containing 10ug of transfection-ready, dried plasmid DNA (reconstitute with 100 ul of water).
Reconstitution Method:	<ol style="list-style-type: none">1. Centrifuge at 5,000xg for 5min.2. Carefully open the tube and add 100ul of sterile water to dissolve the DNA.3. Close the tube and incubate for 10 minutes at room temperature.4. Briefly vortex the tube and then do a quick spin (less than 5000xg) to concentrate the liquid at the bottom.5. Store the suspended plasmid at -20°C. The DNA is stable for at least one year from date of shipping when stored at -20°C.
RefSeq:	NM_145095.2 , NP_659563.1
RefSeq Size:	3739 bp
RefSeq ORF:	3309 bp
Locus ID:	246325
UniProt ID:	Q9QWS8
Cytogenetics:	9q11
Gene Summary:	Pore-forming (alpha) subunit of voltage-gated potassium channel. Elicits a slowly activating, outward rectifying current. Channel properties may be modulated by cAMP and subunit assembly.[UniProtKB/Swiss-Prot Function]

Product images:



Circular map for RR209678L3