

Product datasheet for **RR209668**

Ptpmt1 (NM_001105726) Rat Tagged ORF Clone

Product data:

Product Type: Expression Plasmids
 Product Name: Ptpmt1 (NM_001105726) Rat Tagged ORF Clone
 Tag: Myc-DDK
 Symbol: Ptpmt1
 Synonyms: Plip
 Mammalian Cell Selection: Neomycin
 Vector: pCMV6-Entry (PS100001)
 E. coli Selection: Kanamycin (25 ug/mL)
 ORF Nucleotide Sequence: >RR209668 representing NM_001105726
 Red=Cloning site Blue=ORF Green=Tags(s)

TTTTGTAATACGACTCACTATAGGGCGGCCGGAATTCGTCGACTGGATCCGGTACCGAGGAGATCTGCC
 GCC**CGATCGCC**

ATGGTTCCTGTCCCGGATCCCCGGCCTGCCTCTGACGGCGGGGACTCAGCTTCGGAGAGTCGGGAGG
 CATCAGGTGGCCCGCAGCTCTCGTCTCTGCGTCTTCTCGCGGTGGCTGACCGCGAGCTCCGAAGCGGG
 TGGCTGGCCGCTGCGCTTGGCGGGTGGGGCGGGATGGCGCGTCCGCGTGGCTGGAGGCCGGCCTGGCC
 CGGGTGTCTTTACCCGACGCTGCTCTACACAGTGTTCGGGGGAGGGTGGCGGCCCGCGCACCGCG
 ATTGGTACCACCGCATCGACCACACAGTGTGCTGGGCGCGCTGCCGCTGAGGAGCATGACGCGCCGGCT
 GGTACTGGACGAGAACGTGCGCGGAGTGATCACTATGAACGAGGAGTACGAGACCAGATTCTGTGCAAC
 ACCTCGAAGGAATGGAAGAATGTGGGAGTTGAGCAGCTACGGCTCAGCACAGTCGACATGACTGGAGTCC
 CCACCTTGGCCAACCTCCACAGAGGAGTCCAGTTTGTCTCAAGTACCAGTCCCTGGGCCAGTGTGTCTA
 CGTGCAATTGTAAGGCTGGTTCGATCCAGAAGTGCCACAAATGGTGGCAGCCTATCTGATTAGGTACACAAC
 TGGAGCCCAGAGGAGGCTATAGAAGCTATCGCCAAAATCCGGTACACATCTCCATCAGGCCAGCCAGT
 TGGAAATTCTCAAAGAGTTCCACAAGGAGATTGCTGCAAGGGCAGCAAAGAAC

ACGCGTACGCGGCCGCTCGAGCAGAACTCATCTCAGAAGAGGATCTGGCAGCAAATGATATCCTGGATT
 ACAAGGATGACGACGATAAGGTTTAA



[View online »](#)

Protein Sequence: >RR209668 representing NM_001105726
 Red=Cloning site Green=Tags(s)

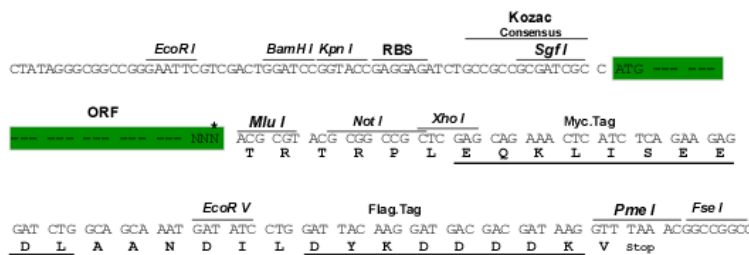
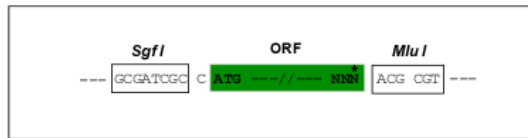
MVPVPGSPGPASDGGDSASESREASGGPQLSSSASF SRWLTASSEAGGWPLRLAGWGGMAASAWLEAGLA
 RVLFYPTLLYTVFRGRVGGPAHRDWHYHRIDHTVLLGALPLRSMT RRLVDENVRGVITMNEEYETRF LCN
 TSKEWKNVGVEQLRLSTVDMTGVP TLANLHRGVQFALKYQSLGQC VYVHCKAGRSRSATMVAAYLIQVHN
 WSPEEAIEAIAKIRSHISIRPSQLEILKEFHKEIAARA AKN

TRTRPLEQKLISEEDLAANDILDYKDDDDKV

Restriction Sites: Sgfl-MluI

Cloning Scheme:

Cloning sites used for ORF Shuttling:



* The last codon before the Stop codon of the ORF

ACCN: NM_001105726

ORF Size: 753 bp

OTI Disclaimer: The molecular sequence of this clone aligns with the gene accession number as a point of reference only. However, individual transcript sequences of the same gene can differ through naturally occurring variations (e.g. polymorphisms), each with its own valid existence. This clone is substantially in agreement with the reference, but a complete review of all prevailing variants is recommended prior to use. [More info](#)

OTI Annotation: This clone was engineered to express the complete ORF with an expression tag. Expression varies depending on the nature of the gene.

Components: The ORF clone is ion-exchange column purified and shipped in a 2D barcoded Matrix tube containing 10ug of transfection-ready, dried plasmid DNA (reconstitute with 100 ul of water).

Reconstitution Method:

1. Centrifuge at 5,000xg for 5min.
2. Carefully open the tube and add 100ul of sterile water to dissolve the DNA.
3. Close the tube and incubate for 10 minutes at room temperature.
4. Briefly vortex the tube and then do a quick spin (less than 5000xg) to concentrate the liquid at the bottom.
5. Store the suspended plasmid at -20°C. The DNA is stable for at least one year from date of shipping when stored at -20°C.

RefSeq: [NM_001105726.1](#), [NP_001099196.1](#)

RefSeq Size: 1629 bp

RefSeq ORF: 756 bp

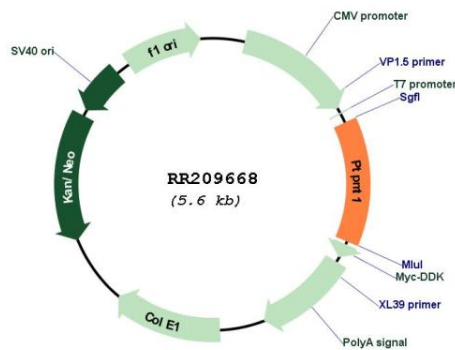
Locus ID: 29390

Cytogenetics: 3q24

MW: 27.5 kDa

Gene Summary: mouse homolog is a phosphatase which specifically catalyzes the conversion of phosphatidylinositol 5-phosphate to phosphatidylinositol [RGD, Feb 2006]

Product images:



Circular map for RR209668