

## Product datasheet for **RR209645**

### Gpr45 (NM\_001106906) Rat Tagged ORF Clone

#### Product data:

Product Type:	Expression Plasmids
Product Name:	Gpr45 (NM_001106906) Rat Tagged ORF Clone
Tag:	Myc-DDK
Symbol:	Gpr45
Mammalian Cell Selection:	Neomycin
Vector:	pCMV6-Entry (PS100001)
E. coli Selection:	Kanamycin (25 ug/mL)
ORF Nucleotide Sequence:	>RR209645 representing NM_001106906 Red=Cloning site Blue=ORF Green=Tags(s)

TTTTGTAATACGACTCACTATAGGGCGGCCGGAATTCGTCGACTGGATCCGGTACCGAGGAGATCTGCC  
GCC**CGATCGCC**

ATGGCCTGTAACAGCACGCCCATCGGGACGTACCAACATCTGCTGCTGAACGCGAGCAACACTCTGGACC  
CTGGGGCCACCCCACTGTCCGCACCGCTCAGGATTTTCGCTGGCAATAATGATGCTGCTGATGATTGTGGT  
AGGATTCCTCGGCAACACGGTGGTCTGCATCATCGTGTACCAGAGGCCAGCCATGCGATCAGCCATCAAC  
TTACTGCTGGCCACCCTGGCCTTCTCCGACATCATGCTGTCTTATGCTGCATGCCTTTCACCGCCATCA  
CCCTCGTCACTGTTTCGATGGCACTTCGGGGACCCTTTTGTTCGGCTTTCAGCTACTCTATTGGTTTTT  
TGTCTGGAGGGCGTGGCCATCCTGCTTATCATTAGTGTGGACCGATTTCTCATCATCGTGCAGCGTCAG  
GACAAGCTGAACCCACGCAGAGCTAAGGTGATCATCGCGCCTCCTGGGTGCTGTCTTCTGCATCTCTG  
CGCCCTCATTCACTGGCTGGACGTTTCATGGAGGTGCCTGCTCGGGCCCCACAGTGCCTGCTGGGCTACAC  
TGAGTTCCAGCTGAACGTGCCTATGTGGTGACACTGGTGGTGGCAGTTTTCTTTCGCGCTTTCGGCGTC  
ATGCTGTGCTCCTATCTGTGCATCCTCAATACGGTGCAGGAAAGTGTGTCCGTGTGCACAACAGTCGG  
ACAGCCTGGACCTCAGACATCTGTGGGGGCTGGCCTGAGACGTCTTCGGCGGCAGCAGCAGCAGGCCAG  
CCTGGACCTGAGCTTCAAACCAAGGCCTTCACCACCATCCTCATCTCTTCGTGGGCTTTTCGCTCTGC  
TGGCTGCCGATTTCGGTCTACAGCCTGCTGTCTGCGTTCAGCCGGCGGTTCTATTACAGCGCTCCTTCT  
ACACCACCAGCAGTGCCTGCTGGCTCAGTTACCTCAAGTCTGTCTTCAACCCATCGTCTACTGCTG  
GAGGATCAAAAAATTCGCGAGGCTGCATAGAGTTGCTTCCCCAAACCTTCAAATCCTCCCTAAAGTG  
CCTGAGCGGATCCAGAGGAAAAATCCAGCAAGCACCGTCTATGTGTGCAACGAAAACCAATCCACTGTCC  
CTGAGCGGATCCAGAGGAAAAATCCAGCAAGCACCGTCTATGTGTGCAACGAAAACCAATCCACTGTCT

**ACGCGT**ACGCGGCCGCTCGAGCAGAACTCATCTCAGAAGAGGATCTGGCAGCAATGATATCCTGGATT  
ACAAGGATGACGACGATAAGGTTTAA



[View online »](#)

**Protein Sequence:** >RR209645 representing NM\_001106906  
Red=Cloning site Green=Tags(s)

MACNSTPIGTYQHLLLNASNTLDPGATPLSAPLRISLAIMLLMIIVVGFNGNTVVCIIIVYQRPAMRSAIN  
 LLLATLAFSDIMLSLCCMPFTAITLVTVRWHFGDHFRCRLSATLYWFFVLEGVAILLIISVDRFLIIVQRQ  
 DKLNPRRAKVIIAASWVLSFCISAPSFTGWTFMVPPARAPQCVLGYTEFPAERAYVVTLVVAVFFAPFGV  
 MLCSYLCILNTRVKNVAVRVHNQSDSLDLRHL SGAGLRRRLRRQQQASLDLSFKTKAFTTILILFVGFSLC  
 WLPHSVYVYLLSAFSRRFYYSASFYTTSTCVLWLSYLKSVFNPIVYVCWRIKKFREACIELLPQTFQILPKV  
 PERIQRKIQPSTVYVCNENQSTVPERIQRKIQPSTVYVCNENQSTV

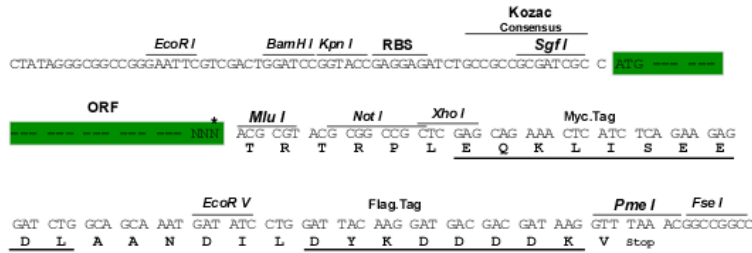
TRTRPLEQKLISEEDLAANDILDYKDDDDKV

**Chromatograms:** [https://cdn.origene.com/chromatograms/ja1676\\_b04.zip](https://cdn.origene.com/chromatograms/ja1676_b04.zip)

**Restriction Sites:** SgfI-MluI

**Cloning Scheme:**

Cloning sites used for ORF Shuttling:



\* The last codon before the Stop codon of the ORF

**ACCN:** NM\_001106906

**ORF Size:** 1119 bp

**OTI Disclaimer:** The molecular sequence of this clone aligns with the gene accession number as a point of reference only. However, individual transcript sequences of the same gene can differ through naturally occurring variations (e.g. polymorphisms), each with its own valid existence. This clone is substantially in agreement with the reference, but a complete review of all prevailing variants is recommended prior to use. [More info](#)

**OTI Annotation:** This clone was engineered to express the complete ORF with an expression tag. Expression varies depending on the nature of the gene.

**Components:** The ORF clone is ion-exchange column purified and shipped in a 2D barcoded Matrix tube containing 10ug of transfection-ready, dried plasmid DNA (reconstitute with 100 ul of water).

- Reconstitution Method:**
1. Centrifuge at 5,000xg for 5min.
  2. Carefully open the tube and add 100ul of sterile water to dissolve the DNA.
  3. Close the tube and incubate for 10 minutes at room temperature.
  4. Briefly vortex the tube and then do a quick spin (less than 5000xg) to concentrate the liquid at the bottom.
  5. Store the suspended plasmid at -20°C. The DNA is stable for at least one year from date of shipping when stored at -20°C.

**RefSeq Size:** 3470 bp

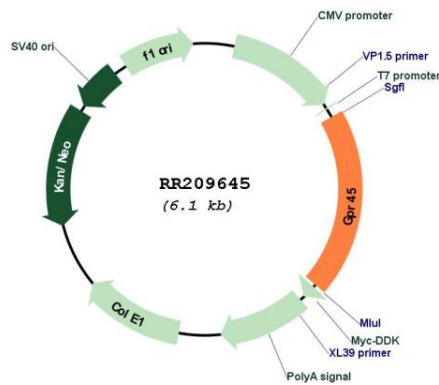
**RefSeq ORF:** 1122 bp

**Locus ID:** 301372

**Cytogenetics:** 9q22

**MW:** 42.2 kDa

**Product images:**



Circular map for RR209645