

Product datasheet for **RR209643**

Srsf2 (NM_001009720) Rat Tagged ORF Clone

Product data:

Product Type: Expression Plasmids
Product Name: Srsf2 (NM_001009720) Rat Tagged ORF Clone
Tag: Myc-DDK
Symbol: Srsf2
Synonyms: Sfrs2
Mammalian Cell Selection: Neomycin
Vector: pCMV6-Entry (PS100001)
E. coli Selection: Kanamycin (25 ug/mL)
ORF Nucleotide Sequence: >RR209643 representing NM_001009720
Red=Cloning site Blue=ORF Green=Tags(s)

TTTTGTAATACGACTCACTATAGGGCGCCGGAATTCGTCGACTGGATCCGGTACCGAGGAGATCTGCC
GCC**CGATCGCC**

ATGAGCTACGGCCGCCCTCCCGATGTGGAGGGCATGACCTCCCTCAAGGTGGACAACCTGACCTACC
GCACCTCACCCGACACCCTGAGGCGGTCTTCGAGAAAGTACGGGCGGTGGCGACGTGTACATCCCGCG
GGACCGCTACACCAAGGAGTCCCGTGGCTTCGCTTTCGTCGGTCCACGACAAGCGTGACGCCGAAGAC
GCCATGGACGCCATGGATGGGGCCGTGCTCGATGGCCGCGAGCTGCGGGTGCAGATGGCGCGCTACGGCC
GTCTCCCGACTCGACACAGCCGCCGGGACC GCCACCCCGTAGGTACGGCGGCGCGGCTACGGGCG
ACGGAGCCGAGTCTCGGCGCCGCGGCGCAGCCGATCCCGGAGCCGGAGCCGTTCCAGGTCCCGAAGC
CGCTCTCGCTACAGCCGCTCCAAGTCTCGTCCCGCACTCGTTCTCGCTCGAGGTCCGACCTCCAAGTCCA
GATCTGCCGAAGATCCAAGTCCAAGTCTCGTCCGATCCCGCTCGAGGTCCAGGTCCAGGTCCAGGTCC
GCGATCCAGAAGTCTCCGCTGTGTGCAAGAGAGAGTCCAAGTCTAGGTCCGGTCCAAGAGCCCAACC
AAGTCTCCAGAAGAAGAGGGAGCGGTTTCATCT

ACGCGTACGCGGCGCTCGAGCAGAACTCATCTCAGAAGAGGATCTGGCAGCAATGATATCCTGGATT
ACAAGGATGACGACGATAAGGTTTAA



[View online »](#)

Protein Sequence: >RR209643 representing NM_001009720
 Red=Cloning site Green=Tags(s)

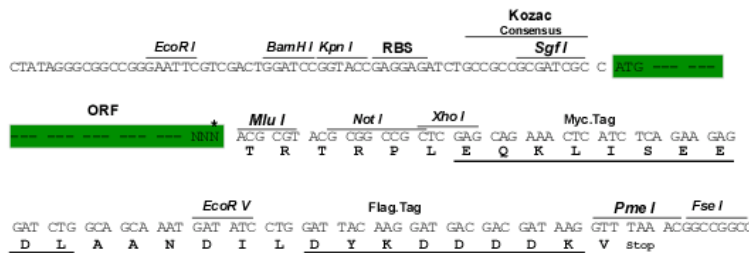
MSYGRPPPVEGMTSLKVDNLT YRTSPDTLRRVFEKYGRVGDVYIPRDRYTKESRGFAFVRFHDKRDAED
 AMDAMDGAVLDGRELRVQMARYGRPPDSSHHSRRGPPRRYGGGYGRRSRSPRRRRSRSRSRSRSRSR
 RSRYSRSKSRSTRSRSRSTSKRSARRSKSKSSVSRSRSRSRSRSRSPPPVSKRESKSRSRKSP
 KSPEEEGAVSS

TRTRPLEQKLISEEDLAANDILDYKDDDDKV

Restriction Sites: SgfI-MluI

Cloning Scheme:

Cloning sites used for ORF Shuttling:



* The last codon before the Stop codon of the ORF

ACCN: NM_001009720

ORF Size: 663 bp

OTI Disclaimer: The molecular sequence of this clone aligns with the gene accession number as a point of reference only. However, individual transcript sequences of the same gene can differ through naturally occurring variations (e.g. polymorphisms), each with its own valid existence. This clone is substantially in agreement with the reference, but a complete review of all prevailing variants is recommended prior to use. [More info](#)

OTI Annotation: This clone was engineered to express the complete ORF with an expression tag. Expression varies depending on the nature of the gene.

Components: The ORF clone is ion-exchange column purified and shipped in a 2D barcoded Matrix tube containing 10ug of transfection-ready, dried plasmid DNA (reconstitute with 100 ul of water).

Reconstitution Method:

1. Centrifuge at 5,000xg for 5min.
2. Carefully open the tube and add 100ul of sterile water to dissolve the DNA.
3. Close the tube and incubate for 10 minutes at room temperature.
4. Briefly vortex the tube and then do a quick spin (less than 5000xg) to concentrate the liquid at the bottom.
5. Store the suspended plasmid at -20°C. The DNA is stable for at least one year from date of shipping when stored at -20°C.

RefSeq: [NM_001009720.2](#), [NP_001009720.1](#)

RefSeq Size: 1901 bp

RefSeq ORF: 666 bp

Locus ID: 494445

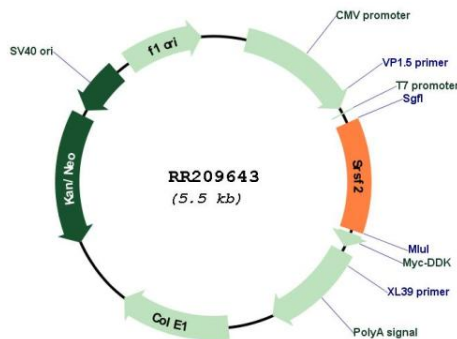
UniProt ID: [Q6PDU1](#)

Cytogenetics: 10q32.2

MW: 25.5 kDa

Gene Summary: Necessary for the splicing of pre-mRNA. It is required for formation of the earliest ATP-dependent splicing complex and interacts with spliceosomal components bound to both the 5'- and 3'-splice sites during spliceosome assembly. It also is required for ATP-dependent interactions of both U1 and U2 snRNPs with pre-mRNA. The phosphorylated form (by SRPK2) is required for cellular apoptosis in response to cisplatin treatment (By similarity).
[UniProtKB/Swiss-Prot Function]

Product images:



Circular map for RR209643