

Product datasheet for **RR209632**

Acsbg1 (NM_134389) Rat Tagged ORF Clone

Product data:

| | |
|---------------------------|---|
| Product Type: | Expression Plasmids |
| Product Name: | Acsbg1 (NM_134389) Rat Tagged ORF Clone |
| Tag: | Myc-DDK |
| Symbol: | Acsbg1 |
| Synonyms: | Grlacs; Lpd |
| Mammalian Cell Selection: | Neomycin |
| Vector: | pCMV6-Entry (PS100001) |
| E. coli Selection: | Kanamycin (25 ug/mL) |



[View online »](#)

ORF Nucleotide Sequence:

>RR209632 representing NM_134389
 Red=Cloning site Blue=ORF Green=Tags(s)

TTTTGTAATACGACTCACTATAGGGCGGCCGGGAATTCGTCGACTGGATCCGGTACCGAGGAGATCTGCC
 GCC**CGGATCGCC**

ATGCCACGCA GTTCTGAAGCTGGATACTGCTGTTGTCCAGGGACTCCAATATGCCTGACAGCAGAGACG
 ATCAGCAGCAGGGTGCCAGCATGGGGACCTCCCCAGACA ACTCACAAACCAGCTCCTTAATTGATGGGCG
 GACTCTCCAAAGAGTCTCCAAGTCATGGTCTCGAGCTCTCAGCTCCAGAAAAGGCAAGAGCTGCCTCT
 TTGGATGCTTCAGAGGAAGCACTATGGACA ACTCGGGCCGATGGGAGAGTGCGCCTGCGCCTGGAACCTT
 TCTGTACGCAGCTTCCCTACACCGTGCACCAGATGTTCTATGAGGCCCTGGATAAGTACGGGAACCTCAG
 TGCTCTGGGCTTCAAGCGCAAGGACAAGTGGGAGCGCATCTCTTACTACCACTACTACCTGATTGCGCGC
 AAAGTAGCCAAAGGCTTCTTGAAGCTCGGCCTGGAGCGTCTCACAGCGTGGCGATCCTCGGCTTCAACT
 CTCCAGAAATGGTTTTCTCTGCGGTGGGCACAGTGTTCAGGGGGCATCGTCACCGGCATTTACACCAC
 CAGCTCCCCAGAGCCTGCCAGTACATTGCCATGACTGCCGAGCCAATGTCATCGTGGTTGACACACAG
 AAGCAGCTGGAAGATCCTGAAGATCTGGAAGACTTGCCACATCTAAAGGCAGTGGTGATATACCAAG
 AACCCCTCCCAAGAAGATGGCCAATGTGTACAGGATGGAGGA ACTCATAGA ACTGGGGCAAGAAGTGCC
 TGAGGAGGCCCTAGATGCCATCATCGATACCCAGCAGCCAAACCAGTGCTGTGTGCTCGTCTACACATCA
 GGCACCACAGGAAACCCCAAGGGTGTGATGCTGAGTCAAGACAATATCACATGGACAGCAGGGTATGGCA
 GTCAGGCTGGGGACATCCAGCCAGCGGAAGTGCAGCAAGAGGTAGTGGTCAGCTACTTGCCTCTCAGCCA
 CATTGCTGCCAGATCTATGACCTGTGGACGGGCATCCAGTGGGGGGCCAGGTCTGCTTTGAGATCCA
 GATGCCCTTAAGGGGACCCTGGTGAACACACTGCGGGAGGTGGAGCCACATCCACATGGGAGTGCCCC
 GAGTATGGGAGAAGATCATGGAACGGATCCAGGAGGTGGCCGCTCAATCTGGCTTCAATCCGCCGCAAGT
 GCTGCTGTGGCCATGTCTGTACCTTGGAGCAGAACCTCACCTGCCCTAGCAACGACCTGAAGCCCTTC
 ACGAGCAGACTGGCGGATTACCTAGTATTAGCCAGGGTCCGTCAGGCTCTGGGCTTTGCCAAGTGTGAGA
 AAACTTCTATGGAGCAGCTCCCATGACGGCAGAGACACAACGCTTCTTTCTGGGCTCAACATCCGCT
 GTACGCAGGCTATGGCCTCAGTGAGAGCACTGGCCCTCACTTCATGTCCAGCCCCACA ACTATCGGCTT
 TACAGCTCCGGCAGGGTGGTGGCCGGCTGTGGGTGAAGCTGGTGAATCAGGATGCAGATGGCATTGGTG
 AGATCTGTCTGTGGGGCCGACCATCTTCATGGGTTATCTGAACATGGAGGACAAAACACATGAGGCCAT
 TGATTCTGAAGGCTGGCTACACACAGGTGACATGGGCCGTCTGGATGATGACGGCTTCTCTACATCACC
 GGGCGCCTCAAAGAATTAATCATCACTGCGGGCGGGGAGAATGTGCCCCGGTGCCATCGAGGAGGCTG
 TGAAGATGGAGTTGCCATCATCAGCAGGCCATGCTGATTGGGGACCAGAGGAAGTTCTGTCCATGCT
 GCTAACACTGAAGTGCACACTGAACCCAGAAACGTCTGAGCCAACCGACAATCTGACGGAGCAAGCTGTG
 GAGTTCTGCCAGAGGGTGGGAGCAAGGCCAGCACCGTATCCGAGATCGTGGGGCAGAAAGACGAGGCTG
 TGTATCAGGCCATCCACGAAGGGATCCAGAGGGTGAACGCGAACGCGGCAGCCCGGCCCTACCACATCCA
 GAAGTGGGCCATTCTCGAACGTGACTTCTCCATTTAGGTGGAGA ACTGGGACCCACCATGAAGTTGAAA
 CGGCTCACGGTTCTGGAGAAGTACAAAGATATCATTGATTCTTTTATCAAGAGCAAAAACAG

ACGCGTACGCGGCCGCTCGAGCAGAACTCATCTCAGAAGAGGATCTGGCAGCAAATGATATCCTGGATT
 ACAAGGATGACGACGATAAGGTTTAA

Protein Sequence: >RR209632 representing NM_134389
 Red=Cloning site Green=Tags(s)

MPRSSEAGYCCLSRDSNMPDSRDDQQGASMGTS PDNSQTSSLIDGR TLSKESPSHGLELSAPEKARAAS
 LDASEEALWTRADGRVRLRLEPFCTQLPYTVHQMFYEALDKYGNLSALGFKRKDKWERISYYQYLIAR
 KVAKGFLKGLERAHSVAILGFNSPEWFFSAVGTVFAGGIVTGIYTTSSPEACQYIAHDCRANVIVDTQ
 KQLEKILKIWKDLPHLKAVVIYQEP PP KMANVYTM EELIELGQEVPEEALDAIIDTQPNQCCVLVYTS
 GTTGNPKGVMLSQDNITWTARYGSQAGDIQPAEVQQEVVSYLPLSHIAAQIYDLWTGIQWGAQVCFADP
 DALKGTLVNTLREVEPTSHMGVPRVWEKIMERIQEVAAQSGFIRRKMLLWAMSVTLEQNLTCPSNDLKPF
 TSRLADYLVLARVRQALGF AKCQKNFYGAAPMTAETQRFFLGLNIRLYAGYGLSESTGPHFMSSPYNYRL
 YSSGRVVPGCRVKLVNQDADGIGEICLWGRTIFMGYLNMEDKTHEAIDSEGWLHTGDMGR LDDDGFLYIT
 GR LKELIITAGGENVPPVPIEEAVKMELPIISSAMLIGDQRKFLSMLLTLKCTLNPETSEPTDNLTEQAV
 EFCQRVGSKASTVSEIVGQKDEAVYQAIHEGIQRVNANAAARPYHIQKWAILERDFSISGGELGPTMKLK
 RLTVLEKYKDIIDSFYQEQQK

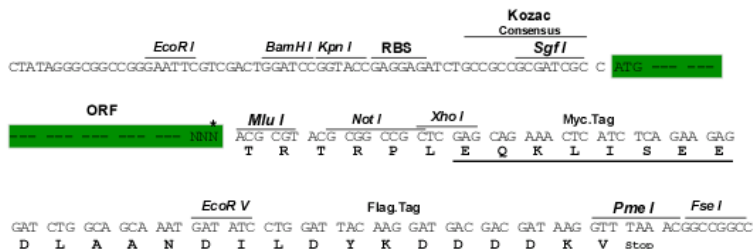
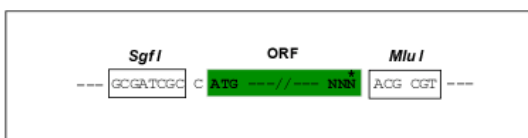
TRTRPLEQKLI SEEDLAANDILDYKDDDDKV

Restriction Sites:

Sgfl-MluI

Cloning Scheme:

Cloning sites used for ORF Shuttling:



* The last codon before the Stop codon of the ORF

ACCN: NM_134389

ORF Size: 2163 bp

OTI Disclaimer: Due to the inherent nature of this plasmid, standard methods to replicate additional amounts of DNA in E. coli are highly likely to result in mutations and/or rearrangements. Therefore, OriGene does not guarantee the capability to replicate this plasmid DNA. Additional amounts of DNA can be purchased from OriGene with batch-specific, full-sequence verification at a reduced cost. Please contact our customer care team at custsupport@origene.com or by calling 301.340.3188 option 3 for pricing and delivery.

The molecular sequence of this clone aligns with the gene accession number as a point of reference only. However, individual transcript sequences of the same gene can differ through naturally occurring variations (e.g. polymorphisms), each with its own valid existence. This clone is substantially in agreement with the reference, but a complete review of all prevailing variants is recommended prior to use. [More info](#)

OTI Annotation: This clone was engineered to express the complete ORF with an expression tag. Expression varies depending on the nature of the gene.

Components: The ORF clone is ion-exchange column purified and shipped in a 2D barcoded Matrix tube containing 10ug of transfection-ready, dried plasmid DNA (reconstitute with 100 ul of water).

Reconstitution Method:

1. Centrifuge at 5,000xg for 5min.
2. Carefully open the tube and add 100ul of sterile water to dissolve the DNA.
3. Close the tube and incubate for 10 minutes at room temperature.
4. Briefly vortex the tube and then do a quick spin (less than 5000xg) to concentrate the liquid at the bottom.
5. Store the suspended plasmid at -20°C. The DNA is stable for at least one year from date of shipping when stored at -20°C.

RefSeq: [NM_134389.1](#), [NP_599216.1](#)

RefSeq Size: 2689 bp

RefSeq ORF: 2166 bp

Locus ID: 171410

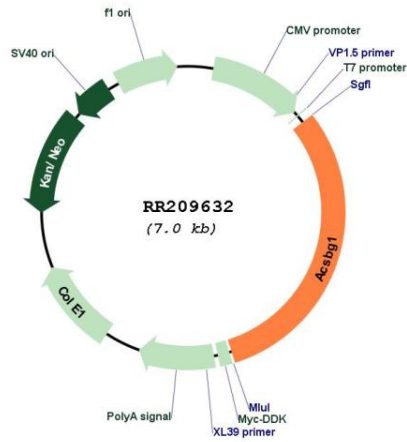
UniProt ID: [Q924N5](#)

Cytogenetics: 8q24

MW: 80.5 kDa

Gene Summary: may play a role in fatty acid metabolism and biosynthesis of steroid hormone precursors [RGD, Feb 2006]

Product images:



Circular map for RR209632