

Product datasheet for **RR209609**

Mapk1 (NM_053842) Rat Tagged ORF Clone

Product data:

Product Type:	Expression Plasmids
Product Name:	Mapk1 (NM_053842) Rat Tagged ORF Clone
Tag:	Myc-DDK
Symbol:	Mapk1
Synonyms:	ERK-2; Erk2; ERT1; p42-MAPK
Vector:	pCMV6-Entry (PS100001)
E. coli Selection:	Kanamycin (25 ug/mL)
Cell Selection:	Neomycin
ORF Nucleotide Sequence:	>RR209609 representing NM_053842 Red=Cloning site Blue=ORF Green=Tags(s)

TTTTGTAATACGACTCACTATAGGGCGGCCGGGAATTCGTCGACTGGATCCGGTACCGAGGAGATCTGCC
GCC**CGGATCGC**C

ATGGCGGCGGGCGGGCGGGCCCGGAGATGGTCCGCGGGCAGGTGTTGACGTGGGGCCGCGCTACA
CTAATCTCTCGTACATCGGAGAAGGCGCCTACGGCATGGTTTGTCTGCTTATGATAATCTCAACAAAGT
TCGAGTTGCTATCAAGAAAATCAGTCCTTTGAGCACCAGACCTACTGTCAGAGAACCCTGAGAGAGATA
AAAATCCTACTGCGTTCAGACATGAGAACATCATCGGCATCAATGACATCATCCGGGCACCAACCATTG
AGCAGATGAAAGATGTATATATAGTACAGGACCTCATGGAGACAGATCTTTACAAGCTCTTGAAGACACA
GCACCTCAGCAATGATCATATCTGCTATTTTCTTTATCAGATCCTGAGAGGATTAAGTATATACATTCA
GCTAATGTTCTGCACCGTGACCTCAAGCCTTCCAACCTCCTGTGAACACCCTTGATCTCAAGATCT
GTGACTTTGGCCTTGCCCGTGTTCAGATCCAGACCATGATCATACAGGGTCTTGACAGAGTATGTAGC
CACGCGTTGGTACAGAGCTCCAGAAATATGTTGAATCCAAGGGTTATACCAAGTCCATTGATATTTGG
TCTGTGGGCTGCATCCTGGCAGAGATGCTATCCAACAGGCCTATCTTCCCAGGAAAGCATTACCTTGACC
AGCTGAATCACATCCTGGGTATTCTTGGATCTCCATCACAGGAAGATCTGAATTGTATAATAAATTTAAA
AGCTAGAAACTATTTGCTTTCTCCTCCGCACAAAAATAAGGTGCCGTGGAACAGGTTGTTCCCAACGCT
GACTCCAAAGCTCTGGATTTACTGGATAAAATGTTGACATTTAACCTCACAAAGAGGATTGAAGTTGAAC
AGGCTCTGGCCACCCGTACCTGGAGCAGTATTATGACCCAAGTATGAGCCATTGCTGAAGCACCATT
CAAGTTTGACATGGAGCTGGACGACTTACCTAAGGAGAAGCTCAAGAAGTCAATTTTTGAAGAGACTGCT
CGATTCCAGCCAGGATACAGATCT

AG**CGGACCG**ACGCGTACGCGGCCGCTCGAGCAGAAACTCATCTCAGAAGAGGATCTGGCAGCAAATGATATCC
TGGATTACAAGGATGACGACGATAAGGTTTAA



[View online »](#)

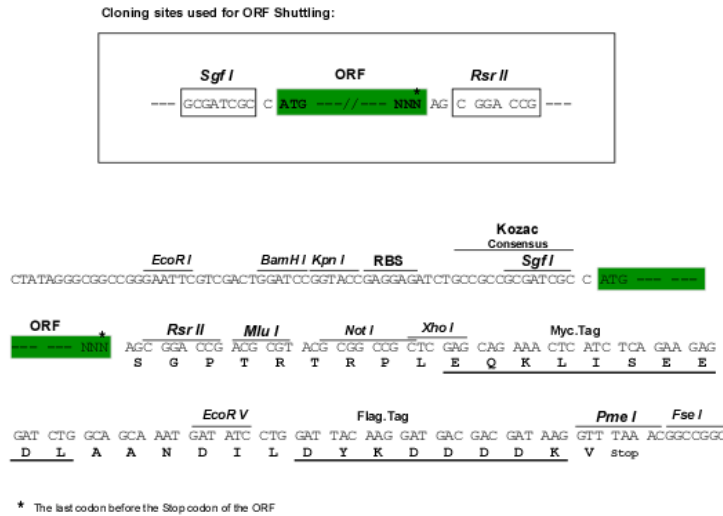
Protein Sequence: >RR209609 representing NM_053842
 Red=Cloning site Green=Tags(s)

MAAAAAAGPEMVRGQVFDVGPRTYTNLSYIGEGAYGMVCSAYDNLNKVRVAIKKISPFHQTYCQRTLREI
 KILLRFRHENIIGINDIIRAPTEIQMKDVIYVQDLMETDLYKLLKTQHLSDHICYFLYQILRGLKYIHS
 ANVLHRDLKPSNLLNTTCDLKICDFGLARVADPDHDHTGFLTEYVATRWYRAPEIMLNSKGYTKSIDIW
 SVGCILAEMLSNRPIFPKHYLDQLNHILGILGSPSQEDLNCIINLKARNYLLSLPHKNKVPWNRLFPNA
 DSKALDLLDKMLTFNPHKRIEVEQALAHPHYLEQYYDPSDEPIAEAPFKFDMELDDLPEKELKELIFEETA
 RFQPGYRS

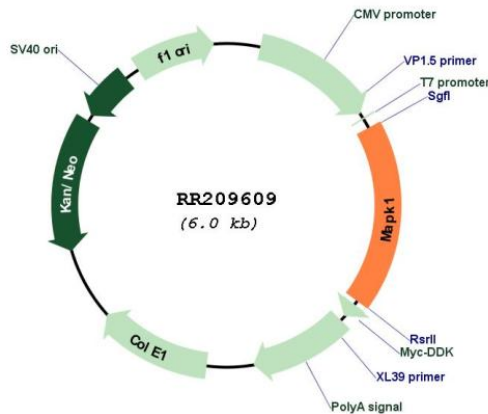
SGPTRTRPLEQKLISEEDLAANDILDYKDDDDKV

Restriction Sites: SgfI-RsrII

Cloning Scheme:



Plasmid Map:



ACCN: NM_053842

ORF Size:	1074 bp
OTI Disclaimer:	The molecular sequence of this clone aligns with the gene accession number as a point of reference only. However, individual transcript sequences of the same gene can differ through naturally occurring variations (e.g. polymorphisms), each with its own valid existence. This clone is substantially in agreement with the reference, but a complete review of all prevailing variants is recommended prior to use. More info
OTI Annotation:	This clone was engineered to express the complete ORF with an expression tag. Expression varies depending on the nature of the gene.
Components:	The ORF clone is ion-exchange column purified and shipped in a 2D barcoded Matrix tube containing 10ug of transfection-ready, dried plasmid DNA (reconstitute with 100 ul of water).
Reconstitution Method:	<ol style="list-style-type: none">1. Centrifuge at 5,000xg for 5min.2. Carefully open the tube and add 100ul of sterile water to dissolve the DNA.3. Close the tube and incubate for 10 minutes at room temperature.4. Briefly vortex the tube and then do a quick spin (less than 5000xg) to concentrate the liquid at the bottom.5. Store the suspended plasmid at -20°C. The DNA is stable for at least one year from date of shipping when stored at -20°C.
RefSeq:	NM_053842.2 , NP_446294.1
RefSeq Size:	5615 bp
RefSeq ORF:	1077 bp
Locus ID:	116590
UniProt ID:	P63086
Cytogenetics:	11q23
MW:	41.3 kDa
Gene Summary:	kinase involved in intracellular signaling; component of Mapk signaling pathway [RGD, Feb 2006]