

Product datasheet for **RR209598**

Susd2 (NM_001106381) Rat Tagged ORF Clone

Product data:

Product Type:	Expression Plasmids
Product Name:	Susd2 (NM_001106381) Rat Tagged ORF Clone
Tag:	Myc-DDK
Symbol:	Susd2
Synonyms:	MGC189067
Vector:	pCMV6-Entry (PS100001)
E. coli Selection:	Kanamycin (25 ug/mL)
Cell Selection:	Neomycin



[View online »](#)

ORF Nucleotide
Sequence:

>RR209598 representing NM_001106381
 Red=Cloning site Blue=ORF Green=Tags(s)

TTTTGTAATACGACTCACTATAGGGCGGCCGGAATTCGTCGACTGGATCCGGTACCGAGGAGATCTGCC
 GCC**CGCATCGCC**

ATGAAGCTGGCTGTGCTGCCCTGGATTTTGTGCTGCTCTCGACAATCCCAGGCCCGGGCTTACAGCAG
 GTACCCCGGGGAGCTGCTCCCTGCGCTGTGGGGTACAGGATGAAATCTGTTCTGTCCATCCAACCTGCTC
 AGGCCTTGGCACCTGTTGTAAAGACTTTCTGAACTACTGTCTAGAGATTTACCCTCCTCGGGCTCCATG
 ATGGGCGGTAAAGACTTCGTGGTGAACATTTAAAGTGGACTGATTCTATTACCAGTGTCAATTTGCAGGT
 TTAAGGAGAGTATCCAGACCCCTGGCTATGTGGACGACTTGAAGCAAGTGCAGTGTATATCACCCCTGCT
 CTACGAAAGCGGCCATATCCCTTACCATCTCAATGGACAATGGCCTCTCCTTTCCCACGCGAGGCACT
 TGGCTAGCTGCTACCCCTACAAAGTCTCTGAGTCTGAGAAGAGCCAGCTAGTAAACGAGACCCATTGGC
 AATACTATGGTACTTCAGACACCCGGGGAAACCTCAGCCTCACCTGGAATACCTCAGCGTGTCCACGCG
 GACCGTACCACTTGAAGTGTGGGCTATGAGGAGACAGGGACGCCCTACACTGGGAAGTGGACTGCGAAG
 TGGTCCTATCTATACCCTTTGGCTACAAACATCCCAATACTGGCTTCTTACTTTCACCCCAAACCTG
 CACCACCTCAGTACCAGAGGTGGAGAGTGGGTGCTCTGAGGATCATTGGCAGCAAGAAGTACGCAGGAGA
 ACAGGATGTGCTGGCCCTCTGGACCAATGATCATGCCCTGGCTTGGCATCTGGGTGATGACTTCCGGGCA
 GACTCTGTAGCCTGGGCCGTGAACAATGCCTGACCTGGGAGGCGTTAGAAGACCAACTACCCAATTCC
 TGACAGAACTGCCAGACTGCCCGTGCACACTGGCTCAGGCCAGGGCTGACTCTGGCCGATTCTTCACTGA
 CTATGGTTGTGACATTGAACATGGCAGCGTGTGCACCTACCACCCAGGGGCTGTGCATTGTGTGCGTTCC
 GTGCAAGCGAGCCCATGTACGGCTCAGGACAGCAATGCTGTACACAGCTTCAGGTACGACAGCTCTGCA
 CCTCAGACTCCACAGTGGCAGTACCCCTGACCGAGGCCATGACTGGGGCGGCCCCCATACCCGCTCTCC
 TCCCCGTGTGCCCGCATGTCTCACTGGCTCTATGACGTATCAGCTTCTATTACTGCTGCCTCTGGGCT
 CCTGAGTGTCCCGGTATATGAAACGACGGCCCTCCAGTACTGCGCAGCTACAGACCCCAACGCTGG
 CCTCCGCCTTCCGGGACCCCATTTTGTACCTTCGATGGCACCAGCTTCTCGTTAGCGGGAAACGGCGA
 GTATGTGTTGTTGGAGACGTTGGAGACGGCCGCCCGTGAAGATCTGAGAGTGCAGGGACGGGCCAG
 CCTGGGAGAAATGCCCAATGGCACCCAGGCCGTTGGCACAGGGCTGACCGCAGTGGCTGTCCAAGAAGATA
 AGTCCGATGTGATAGAGGTGAGGTAGCTGACGGCTCCAGGTCTTGAAGTATTGCTGAATCAAAAAC
 CCTCAGTTTCACTGAACAAAATTGGATGGACCTGAAGGGCATGTTTCTGTGAGTGGCTCTCAGGATAAG
 GTATCAATCATGTTGTCATCGGGGCTGGCCTCGAGGTTGGCGTACAAGTCTTCTCCTGAGTGTGAGCA
 TCTGCTTCTGAGAAGTTTCTGAGCCATACCCGTGGTCTCCTGGGAACACTCAACGATAACCCCTGAGGA
 TGACTTACCCTGCGCAATGGGCATGTCCTGCCCCGAATGCCACTGCTCAGCAGTTATTCCAGTTTGGGA
 GCCAACTGGGCTATTTCAACGCCTCTTCCCTGTTTACCTATGACTCTCGGCCTCTGGTCAACCAGTTCC
 TGAACGGACCCAAGCATGACCCCAACTTCAAACACTCTTCCCGATGAGACCACACTCAGTCCCAGCCA
 GGCAGAAGACTTGGCCAGACTCTGTGAGAGCGACCACTTCTGCGTTCTTGACGTGATAAGCACAGGGGAC
 CCAAGTGTGGCAATGCCACCAGGATTGCCACCAGCTGCACCAGCATCGCTGAAGAGCCTGCAGCCAG
 TGGTATCTGTGGCTGGTACCCCGCCTGTGAATGGGCACAAGGAAGGCTTGAAGTACCTGGAAGGATC
 CACCGTCCGATTGGCTGCAACAGTGGCTACAGCTTGGCAGGGCCAGAGAGTAGCACCTGCCGCGTGTAT
 GGCACATGGTCTTCCGCTACCCCGAGTGTACGCCAGGAAGTGTGGAGCTCGCAGCCCTGACACCACAG
 CACCCCTGACCGACAGCATCGGGCTACGTGCTCGCCAAGACCCAGCCTCCCGGAGAAGCGCAAAGTAC
 CCTAGTCCTA

ACGCGTACGCGGCCGCTCGAGCAGAAACTCATCTCAGAAGAGGATCTGGCAGCAATGATATCCTGGATT
 ACAAGGATGACGACGATAAGGTTTAA

Protein Sequence:

>RR209598 representing NM_001106381
 Red=Cloning site Green=Tags(s)

MKLAVLPWILMLLSTIPGPGLTAGTPGSCSLRCGVQDEICSCHPTCSGLGTCKDFLNYCLEISPSGSM
 MGGKDFVVQHLKWTDSITSVICRFKESIQTLYVDDLKQVHCISPLLYESGHIPFTISMNGLSFPHAGT
 WLAAPYKVSSEKSQLVNETHWQYYGTSDTGGNLSLWNTSALPTRVTIELWGYEETGTPYTGNWTAK
 WSYLYPLATNIPNTGFFFTPKPAPPQYQRWRV GALRIIGSKNYAGEQDVLALWTDHALAWHLGDDFRA
 DSV AWAREQCLTWEALEDQLPNFTEL PDCPCTLAQARADSGRFFTDYGC DIEHGSVCTYHPGAVHCVRS
 VQASPMYGSQQCCYTASGTQLLTS DSTSGSTPDRGHDWGAPPYRSPRPVPGMSHWLYDVISFYCCLWA
 PECPRYMKRRPSSDCRSYRPPRLASAFGDPHFVTFDGT SFSFSGNGEYV LLETLE TAAAVKDLRVQGRAQ
 PGRMPNGTQARGTGLTAVAVQEDKSDVIEVRVADGSQVLEVLLNQKLLSFTEQNWMDLKG MFLSVASQDK
 VSIMLSSGAGLEVGVQGPFLSVSILLPEKFLSHTRGLLGT LNDNPEDDFTLRNGHVLPPNATAQQLFQFG
 ANWAI SNASSLFTYDSRPLVNQFLNGPKHDPNFKPLFPDETTLSPSQAEDLARLCE SDHFCVLDVISTGD
 PSVGNATRIAHQLHQHRLKSLQPVVSCGWLPPP VNGHKEGLKYLEGSTVRFGCNSGYSLAGPESSTCRAD
 GTWSSPTPECQPGTCGARSPD TTAPLTDSIGLRRSPRSLPGEAQSTLVL

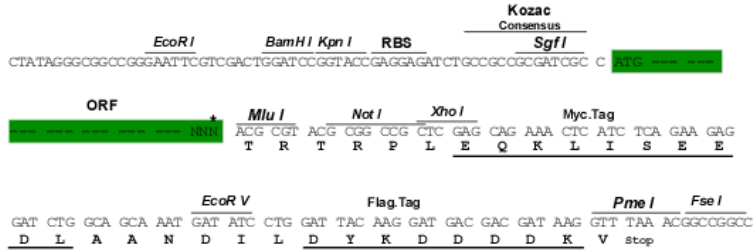
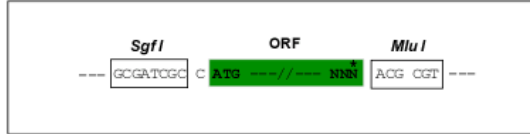
TRTRPLEQKLI SEEDLAANDILDYKDDDDKV

Restriction Sites:

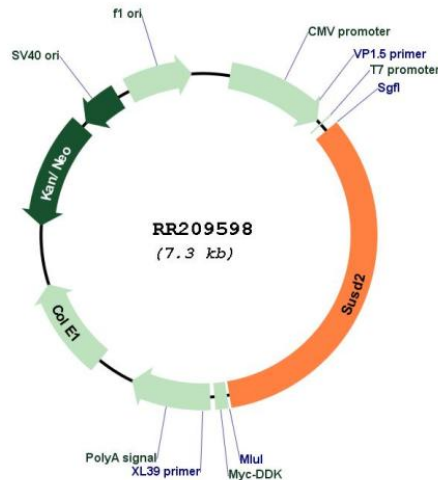
Sgfl-MluI

Cloning Scheme:

Cloning sites used for ORF Shutting:



* The last codon before the Stop codon of the ORF

Plasmid Map:


ACCN: NM_001106381

ORF Size: 2460 bp

OTI Disclaimer: The molecular sequence of this clone aligns with the gene accession number as a point of reference only. However, individual transcript sequences of the same gene can differ through naturally occurring variations (e.g. polymorphisms), each with its own valid existence. This clone is substantially in agreement with the reference, but a complete review of all prevailing variants is recommended prior to use. [More info](#)

OTI Annotation: This clone was engineered to express the complete ORF with an expression tag. Expression varies depending on the nature of the gene.

Components: The ORF clone is ion-exchange column purified and shipped in a 2D barcoded Matrix tube containing 10ug of transfection-ready, dried plasmid DNA (reconstitute with 100 ul of water).

Reconstitution Method:

1. Centrifuge at 5,000xg for 5min.
2. Carefully open the tube and add 100ul of sterile water to dissolve the DNA.
3. Close the tube and incubate for 10 minutes at room temperature.
4. Briefly vortex the tube and then do a quick spin (less than 5000xg) to concentrate the liquid at the bottom.
5. Store the suspended plasmid at -20°C. The DNA is stable for at least one year from date of shipping when stored at -20°C.

RefSeq: [NM_001106381.1](#), [NP_001099851.1](#)

RefSeq Size: 3185 bp

RefSeq ORF: 2463 bp

Locus ID: 294335

Cytogenetics: 20p12

MW: 89.7 kDa