

Product datasheet for **RR209553**

Hps6 (NM_181432) Rat Tagged ORF Clone

Product data:

Product Type:	Expression Plasmids
Product Name:	Hps6 (NM_181432) Rat Tagged ORF Clone
Tag:	Myc-DDK
Symbol:	Hps6
Synonyms:	Hsp6
Mammalian Cell Selection:	Neomycin
Vector:	pCMV6-Entry (PS100001)
E. coli Selection:	Kanamycin (25 ug/mL)



[View online »](#)

ORF Nucleotide Sequence:

>RR209553 representing NM_181432
 Red=Cloning site Blue=ORF Green=Tags(s)

TTTTGTAATACGACTCACTATAGGGCGGCCGGAATTCGTCGACTGGATCCGGTACCGAGGAGATCTGCC
 GCC**CGCATCGCC**

ATGAAGCGTGCAGGAACCTGCGCCTGCTTTCGGATCTGAGCAACTTCACTGGCGCGGCCCGCTCCGCG
 AGTTGTTGGCAGGGGACCCAGCTATCCTAGTCCGCTGCAGCCCTGATGGCCGTACCTGCTACTGTTAAG
 ACCTCCCGGATCGCCCGCCCCAACTTCTAGTGGCTGTGCGTGGGCCGGGCTGCCTCTGGAGCGTGCC
 TGGTGGAGGGGACCCCTCGCCGCTGGACGTCTTTTTCGTTCCATGGCTGGCGGACCCGCGCTGATAT
 TGGTATGGGAGAGTGGCCTAACAGAGGTGTGGGCGTGGGGATGGAGCCTGGATGGAAGCTACTTCAGAG
 CACTGAGTTGTGTCGGATGGTGGAGCCCGCTGATGGCTGTGGCAGCAACCCGAGGCGCCCTAGTTTGG
 TGCGAGGAGCGTCAGCCTGGCGTTGAGGACCAACCAGGGCAGCTTCAATGGCCTCAACCACTGTGTGT
 GCGTCAAGACCCTGGACACCAGCGGGGAGGCTGGCACAAACTAGGCTGCACCCACATCCTGCTGCATCA
 CTGCCCTCTTTTGGACTGATAGCCTCCGCAAGGAACTTCTCCTGGTGCCTACTTCCACCACTTGGCCT
 GGTGTGGCCCATGTTCTGCTCATCTGGAGCCCAAGCAAGGGGAAGTAATAGTTGCTGCCCATCTCTCG
 GTCTTTCTCACAGTAAAAGCCTGAATCCAAAACAGGGGATACTTGGGACTTTCGGACCCTGCTGCGAGG
 CCTTCTGGATTCTGTCCCCAGGGAGCCGCTGGCTGTACACACTTGGGCCCATCTTCCAGGGCTTG
 TTGTTGCTTGACTTGAAGGTAAGGTGAGCCTAGTGCAGTGCCATGGTGGTACTCGAACTGTGGGACTCC
 TGCAGGAGGCACCTGTAGGTCTACAAGGCTGTCAGCCCTGGGAACATTTTCAAGCCTTAGCCTGTGT
 CTTGGGCTCCACCTTGAAGTCTGAGCCTGAGCAGTGGCGGCTGTTGGAAAGGAAGGTAAGTACA
 GACAGATACACCTCCTGGAGCCTCCAGCCCTGGCGTGAAGAATGAGGAAGACCTAGAGACCCGAGGAG
 CTCCCGTTTGCCTTTCAGCCTTGGGTCTCTTTTGTGTGTTGGGAAGCTCCCCAAGGCCTTGGAGTGCC
 CTGGACAAGGATCTGGTGTGTTGAGGAGCCTGTGGTACTACCAGCGTCGGAGTCTTCGAGGCACCCAG
 CTTACCCCGAAGAGCTGAGACACAACAGCATGTTTCGGGCACCTCAGGCCTTGGCCTCCATTCTCCAGG
 GCCACCTGCCCATCTGCACTATTGACCACCCTGAGGGCTGAACTTCGAGATTATCGGAGTATAGAACA
 GCTCAAGGCCAGCTGGTGGCTGGGGATGATGAAGAGACGGGCTGGACGGAGTTAGCAGAGCAGGAGGTG
 GCACGCCTGTGAGAACCCTTACAGGAGACCAGCTGGCCCAATTCAACACATTTTCAAGCCCTTC
 CTACAGCAGCTTGGAGTGCCACCCTCAAGCCCTACAAGTGCAGCCGGATAGGAGTGGCAGGCTGAGGTC
 CCAAGCGCCCCGGATGATGGAAGAAAGTCTGAGGGCTCAACGGCTGGAAAGGAACATCCCAATGGA
 ATCCTGCCTCCCTTGAAGTCTGTGTCAGTGCCTAGGCCAGCTAGAGCCTCAGTGGCTTCCCCGTTTG
 TGGAACTGGCACAGCAACAGGGTGGTCCAGGCTGGGGCGCCGAAGTCCCAGTCTGCCCTTTATCGCCG
 AGCCCTGTCCGTGCTGGGTGAGGAAGGGAAGAGACCTGAGGCTCTAGAATCGAGCTGCTTCTGGGCAGC
 GGGCGACCCAAAGCCGTGCTACAAGCTGTGAGGCAGCTAATAAAGAAAGAAGTGGGAACGGGCTCTGG
 AGGCCGGCCTGACCTGGACTCTCCAGCCCTGCTTCAAGCGAGATCTTCAACCTGTGCTGGCAGA
 GTTTGCCAGCACCGCCGCTTGATACACACCTCCCTCTCCTCTGTCGCTGTGCCACCAGAAGTGGCT
 CCAGATGAGCTCCTGCTTCTACTGAGGACACATCTCCAGACGATGCGGGAGCCACCCCTTCCCTGAGC
 CTGGGGCTGAGCCTGGGCTGAGCCCCCTCACAGTGGGCTTGGTCAGAGCCCTGCTAGAACAGACTGG
 GGCTCAGGGAAGTCTCTGGCCAGTTCAAAGCACCTTTGAGGACATCCTATGGGATTCAGGCACTCCA
 CCCCCTACCCACCTCGCGGACCTATGACTACTCTCCAGGCATCAGACCACCCAGGGCAGGAAGCCTGGG
 GACCATCTGGACAGGGGCTTGGTGCAGCTGACGTGGGAGTTCATTTCG

ACGCGTACGCGGCCGCTCGAGCAGAAACTCATCTCAGAAGAGGATCTGGCAGCAATGATATCCTGGATT
 ACAAGGATGACGACGATAAGGTTTAA

Protein Sequence: >RR209553 representing NM_181432
 Red=Cloning site Green=Tags(s)

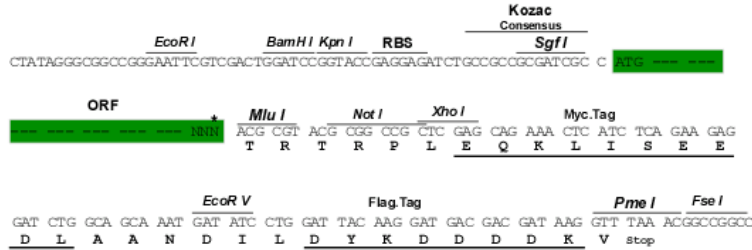
MKRAGTLRLLSDLSNFTGAARLRELLAGDPAILVRCSPDGRHLLLLRPPGSPAPQLLVAVRGPGLPLERA
 WSEGDPSPLDVFFVPWLARPALILVWESGLTEVWVGMEPGWKLLQSTELCPDGGARVMAVAATRGLVW
 CEERQPGVEDQPGQLSMAFNHCVCVKTLDTSGEAGTKLGCTHILLHHCP SFGLIASRKELFLVPTSTTWP
 GVAHVLLIWSPSKGKVIIVAAPSLGLSHSKSLNPKQGDWDFRTLLRGLPGFLSPREPLAVHTWAPSSQGL
 LLLDLKGVSLVQCHGGTRTVGLLQEAPVGLQGSAAALGTFHGTACVVGSTLELLDMSSGRLLERKVLST
 DRVHLLLEPPAPGVKNEEDLETRGALRLLSALGLFCVCWEAPQGLEVP SDKDLVFEEACGYQRRSLRGTQ
 LTPEELRHNSMFRAPQALASILQGHLPPSALLTTLRAELRDYRSIEQLKAQLVAGDDEETGWTELAHEV
 ARLLRTHLTGDQLAQFNTIFQALPTAAWSATLQALQLQPDRSGRLRSQAPPDVWKKVLRAPTAGEHPNG
 ILPPFELLQCLGQLEPQWLPPFVELAQQGGPGWGAEGPSLPL YRRALSVLGEEGKRPEALELELLLS
 GRPKAVLQAVRQLIKKEQWERALEAGLTDSSSPLL RSEIFNLLAEFAQHRRLDTHLPLL CRLCPPEVA
 PDELLLLLRTHLPDDAGATPFPEPGAEPGAEPPLTVGLVRALLEQTGAQGRSSGPVQSTFEDILWDSGTP
 PPTPPRGPMTTLQASDHGQEAWGPGSGQLGAADVGVHS

TRTRPLEQKLI SEEDLAANDILDYKDDDDKV

Restriction Sites: Sgfl-MluI

Cloning Scheme:

Cloning sites used for ORF Shutting:



* The last codon before the Stop codon of the ORF

ACCN: NM_181432

ORF Size: 2427 bp

OTI Disclaimer: The molecular sequence of this clone aligns with the gene accession number as a point of reference only. However, individual transcript sequences of the same gene can differ through naturally occurring variations (e.g. polymorphisms), each with its own valid existence. This clone is substantially in agreement with the reference, but a complete review of all prevailing variants is recommended prior to use. [More info](#)
OTI Annotation: This clone was engineered to express the complete ORF with an expression tag. Expression varies depending on the nature of the gene.

Components: The ORF clone is ion-exchange column purified and shipped in a 2D barcoded Matrix tube containing 10ug of transfection-ready, dried plasmid DNA (reconstitute with 100 ul of water).

Reconstitution Method:

1. Centrifuge at 5,000xg for 5min.
2. Carefully open the tube and add 100ul of sterile water to dissolve the DNA.
3. Close the tube and incubate for 10 minutes at room temperature.
4. Briefly vortex the tube and then do a quick spin (less than 5000xg) to concentrate the liquid at the bottom.
5. Store the suspended plasmid at -20°C. The DNA is stable for at least one year from date of shipping when stored at -20°C.

RefSeq: [NM_181432.2](#), [NP_852097.1](#)

RefSeq Size: 2636 bp

RefSeq ORF: 2430 bp

Locus ID: 309446

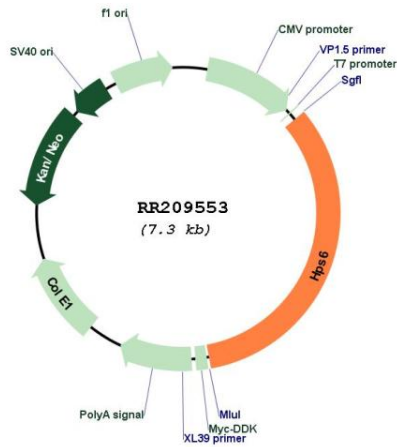
UniProt ID: [Q7M733](#)

Cytogenetics: 1q54

MW: 87.5 kDa

Gene Summary: mouse homolog may be involved in synthesis of highly specialized lysosome-related organelles; mutation of human homolog is associated with Hermansky-Pudlak syndrome [RGD, Feb 2006]

Product images:



Circular map for RR209553