

## Product datasheet for **RR209525**

### **Fn1 (NM\_019143) Rat Tagged ORF Clone**

#### Product data:

**Product Type:** Expression Plasmids  
**Product Name:** Fn1 (NM\_019143) Rat Tagged ORF Clone  
**Tag:** Myc-DDK  
**Symbol:** Fn1  
**Synonyms:** FIBNEC; fn-1  
**Vector:** pCMV6-Entry (PS100001)  
**E. coli Selection:** Kanamycin (25 ug/mL)  
**Cell Selection:** Neomycin  
**ORF Nucleotide Sequence:** >RR209525 representing NM\_019143  
Red=Cloning site Blue=ORF Green=Tags(s)

TTTTGTAATACGACTCACTATAGGGCGCCGGGAATTCGTCGACTGGATCCGGTACCGAGGAGATCTGCC  
GCCGGATCGCC

ATGCTCAGGGTCCGGACCCGGCGGCTGCTGCTGCTAGCAGTCTGTGCCTGGGACATCGGTGCGCT  
GCACCGAAACCGGAAGAGCAAGAGGCAGGCTCAGCAAATCGTGCAGCCTCCGTCCCGGTGGCTGTCAG  
TCAGAGCAAGCCTGGCTGTTTTGACAACGGGAAGCATTATCAGATAAATCAGCAGTGGGAACGGACCTAC  
CTAGGCAACGCCCTGGTTTGTACCTGCTATGGAGGAAGCAGAGGTTTTAACTGCGAGAGCAAGCCTGAAC  
CTGAAGAGACCTGTTTTGACAAATACACTGGAACACTTACAAAGTGGGTGACACTTATGAGCGCCCTAA  
AGATTCCATGATCTGGGACTGTACCTGCATTGGGGCTGGGCGAGGCAGGATCAGCTGTACCATTGCAAAAT  
CGCTGCCATGAAGGGGGTCAATCCTACAAGATTGGTGACAAGTGGAGGAGGCCACATGAGACTGGTGGCT  
ATATGTTGGAGTGTGTGTCTGGGGAATGGAAAAGGGGAATGGACCTGCAAGCCAATAGCTGAGAAATG  
TTTTGATCACGCTGCTGGGACTTCTACGTCGTGGGGAGACCTGGGAAAAGCCCTACCAAGGCTGGATG  
ATGGTGGACTGTACTTGTCTGGGCAAGGCAATGGGCGTATCACCTGCACCTCCCGGAACAGATGCAATG  
ATCAGGACACCAGGACCTCCTACAGAATTGGAGACACATGGAGCAAGAAGGACAACAGAGGGAACCTGCT  
CCAGTGTGTCTGCACAGGCAACGGCAGAGGGGAGTGGAAAGTGTGAGCGACATGTTCTACAGAGTGTCTCA  
GCTGGATCTGGCTCCTTACAGATGTCCGAACAGCTATTTACCAACCCAGACCCACCCCGACCCCGCAC  
CGTACGGCCACTGTGTCACAGACAGCGGTGTGGTCTACTCTGTGGGAATGCAGTGGCTGAAGTCTCAAGG  
AGACAAGCAGATGCTGTGCACTTGCTGGGCAATGGCGTCAGCTGCCAGGAGACAGCTGTGACCCAGACT  
TACGGTGGCAACTCAAACGGGGAGCCCTGTGTTCTCCCGTTCACCTACAACGGTAGGACCTTCTACTCCT  
GCACCACCGAAGGGCGGCAAGACGGACATCTGTGGTGTAGCACAACTTCAAATTATGAACAAGACCAGAA  
GTATTCTTCTGCACAGACCACGCGTTTTGGTTCAGACTCGAGGTGGGAATCCAATGGTGCCTTGTGC  
CACTTCCCCTTCTGTACAACAACCGGAATTACACCGACTGTACTTCTGAGGGTAGCGGGACAACATGA  
AATGGTGCGGCACCACCAAGAACTACGATGCCGATCAGAAGTTTGGATTCTGCCAATGGCTGCCCATGA  
GGAGATCTGCACGACCAACGAAGGGTCAATGTATCGCATTGGGGACCAAGTGGGATAAGCAGCATGACCTG  
GGCCACATGATGAGGTGCACGTGTGTTGGGAACGGCCGTGGAGAAATGGGCTGCATCCCCTACTCCCAGC



TCCGAGATCAGTGCATCGTTGATGACATTACTTACAACGTCAACGACACGTTCCACAAGCGTCACGAGGA  
 GGGACATATGCTGAAGTGTACCTGCTTCGGTCAAGGCGGGGAGATGGAATGTGACCCCATCGACCAG  
 TGCCAAGATTCAGAGACCCGGACATTTTACCAGATTGGTGACTCCTGGGAGAAGTTTGTGCATGGTGTCA  
 GATACCAAGTGTACTGTTACGGCCGTGGCATTGGGGAGTGGCACTGCCAGCCTCTGCAGACCTACCCAGG  
 CACAACGGACCTGTTCAAGTAATATCACGGAGACCCCAAGCCAGCCCAATCCACCCCATCCAGTGG  
 AATGCCCGGAGCCTTACACATCACCAAGTACATTCTCAGGTGGAGACCTAAAACCTCTACGGGTGCT  
 CGAAGGAAGCTACCATTCCAGGCCACCTTAACCTCTATACCATCAAAGGCCTGACCCCAAGTGTGATCTA  
 CGAGGGACAGCTCATCAGCATCCAGCAGTACGGGCACCAAGAAGTGACTCGCTTTGACTTACCACCAGC  
 GCCAGCACACCTGTGACCAGCAACACAGTGACTGGAGAGACTGCGCCCTTTTCTCCTGTTGTGGCCACTT  
 CCGAATCTGTCACTGAAATCACAGCCAGCAGCTTCGTGGTCTCCTGGGTCTCAGTTCGGACACGGTGTG  
 AGGATTCAGAGTGGAGTACGAAGTACGAGCAGGAAGGAGATGAGCCTCAGTACCTTGATCTTCCAAGCACA  
 GCCACTTCTGTGAACATTCTGACCTGCTCCCGGGCAGAAAGTACATCGTCAACGTCTATCAGATATCTG  
 AAGAGGAAAGCAGAGCTTGATCCTGTCTACATCACAGACTACAGCACCTGATGCGCCTCCAGACCCTAC  
 TGTGGACCAGGTTGATGACACTTCCATTGTTGTCGATGGAGCAGACCCAGGCACCTATCACAGGGTAC  
 AGGATTGTCTATTCACCTCAGTAGAAGCAGTAGCACAGAACTCAACCTTCTGAAACGGCCAACCTCCG  
 TACCCTCAGCGACCTGCAGCCCGGTGTTCAGTACAACATCACTATCTATGCTGTGGAGGAGAACCAGGA  
 GAGCACACCCGTTTTATCCAGCAGGAGACTACTGGCGTCCCACGATCCGATGATGTTCCCGCTCCAAAAG  
 GACCTACAGTTTGTGGAAGTGACCGACGTGAAAGTACCATCATGTGGACACCTCCTAATAGCGCAGTGA  
 CTGGATACCGTGTGGATGTCCTGCCTGTCAACCTGCCAGGGGAACATGGGCAGAGGCTGCCTGTCAACAG  
 GAACACCTTTGCTGAAGTACCGGACTGTCCCAAGGGGTACGTACCTCTTCAAAGTCTTTGCTGTGCAT  
 CAGGGCAGGAAAGCAAGCCTCTGACAGCACAACAGACCACCAAACTCGATGCTCCCACTAACCTCCAGT  
 TTGTCAATGAAACGGACAGAACAGTCTGGTAACTTGGACTCCACCTCGAGCCCGGATAGCAGGCTACCG  
 TGTGACAGTGGCCTCACCCGAGGAGGCCAGCCCAAGCAGTACAATGTGGGACCCATGGTCTCAAAGTAT  
 CCCTGAGAAATCTGCAGCCTGGGTCTGAGTACACTGTGACCTTGTGGCTGTGAAAGGCAACCAGCAGA  
 GTCCCAAAGCCACCGGAGTCTTTACTACCTGCAGCCTCTGCGCTCCATTCCACCTTATAACACCGAGGT  
 GACAGAGACCACAATCGTGATCACCTGGACCCCGCTCCAAGGATTGGCTTCAAGCTGGGTGTACGACCA  
 AGCCAGGGAGGTGAAGCACCCCGAGAAGTGACTTCAGACTCAGGAAGCATCGTTGTGTCTGGCTTGACTC  
 CAGGCGTGAATACACGTACACCATCCAAGTCTGAGGGACGGCCAGGAGAGAGATGCACCAATTGTCAA  
 CCGAGTAGTGACACCGCTGTCTCCCAACCAACTTGCACCTGGAGGCCAATCCTGACACTGGAGTGCTT  
 ACCGTCTCCTGGGAGAGGAGCACCCAGATATTACTGGCTACAGAATAACCACCACCCCAACAACG  
 GGCAGCAGGAAACCGCTTTGGAAGAAGTGGTTCATGCCGATCAGAGTTCTGACATTTTGAAACCTGAA  
 TCCTGGCCTGGAGTACAATGTCAAGTGTACACTGTCAAAGATGACAAGGAAAGTGCCCTATCTCTGAT  
 ACCGTATCCCAGAGGTGCCCGAGCTCACTGACCTAAGCTTTGTTGATATAACTGACTCAAGCATCGGCC  
 TGAGGTGGACCCCGCTAAACTCTTCCACCATATCGGGTACCGAATCACAGTAGTTGCGGCAGGAGAAGG  
 GATCCCAATTTTGAAGATTTTGTGGACTCCTCAGTAGGATACTACACAGTTACAGGGCTGGAACCCGGC  
 ATTGACTATGACATCAGCGTTTACTACTCTAATGCGCGAGAGAGTGGCCCTACTACACTGACACAGC  
 AAACGGCCGTCCCTCTCCACGGATCTGCGATTACCAATATCGGTCCGGACACTATGCGGGTCACTTG  
 GGCCCCGCTCCGTCCATTGAGCTAACCAACCTTTGGTGCCTACTCACCTGTGAAGAACGAGGAGGAT  
 GTGGCAGAGCTGTCCATTTACCCCTCAGACAACGCCGTGGTCTTAAACAAATCTCCTGCTGGGACTGAGT  
 ACTTAGTCAGTGTCTCCAGCGTGTACGAACAGCATGAGAGCATCCCTCTCAGAGGAAGACAGAAAACAGG  
 TCTGGACTCCCAACTGTTTTGATTCTTCTGATGTACCCGCAACTCATTACCGTCCACTGGGTGGCT  
 CCTCGGGCCCCATACCGGCTACATCATCGCCATCACGCCGAGCATTCTGCCGAAGACCCAGGCAAG  
 ACCGAGTGCCGCCCTCAAGGAATTCTATCACCTCACCAACCTAATCCGGGCACGGAGTACATTGTAC  
 CATCATTGCTGTTAATGGCAGAGAGGAGAGCCCCCACTGATTGGCCAGCAATCCACGGTTTCCGATGTC  
 CCGAGAGATCTGGAGGTATCGTTCCACCCCAACAGCCTGCTCATCAGTTGGGAACCCCGCCGTCT  
 CTGTGCGCTATTACAGAATCACCTATGGAGAGACAGGAGGAAATAGCCCTGTCCAGGAATCACTGTGCC  
 CGGAAGCAAGTCCACCGCCACCATCAACAACATTAACCAGGAGCAGACTACACCATCACCTGTATGCT  
 GCACTGGCCGTGGGGACAGTCCAGCCAGCAGCAAGCCAGTTTCCATCAATTATCAAACAGAAATTGACA  
 AGCCATCCAGATGCAGGTGACGGATGTCCAGGACAACAGCATCAGTGTGAGGTGGCTGCCTTCAACTTC  
 TCCTGTGACAGGTTACAGAGTGACCACCGCTCCAAAAATGGCCTAGGACCAAAAAATCTCAAAGTGTG  
 AGTCCAGATCAAACAGAAATGACCATTAAGGTTTGAACCCACCGTGGAGTATGTGGTTAGTGTCTATG  
 CTCAGAACCGGAACGGAGAAAGCCAGCCCTGGTTCAGACTGCAGTGACCAACATTGACCGCCCTAAAGG

ACTGGCATTCACTGATGTGGATGTCGATTCCATCAAAATTGCCTGGGAAAGCCACAGGGGCAAGTTCC  
AGGTACAGGGTGACCTACTCAAGCCCTGAGGATGGAATCCATGAGCTTTTCCCTGCGCCTGATGGTGACG  
AGGACACGGCAGAGCTGCACGGCCTCAGGCCGGGTTCTGAGTACACAGTCAGTGTGGTTGCCTTGCACGG  
TGGCATGGAGAGCCAGCCCTGATTGGAGTCCAGTCCACAGCCATTCTGCGCCAACCAATCTGAAGTTC  
ACTCAGGTGTACCCACCACCTTGACTGCCAGTGGACAGCACCAGTGTAAAGTCACTGGCTACCGAG  
TGCGGGTGACCCGAAGGAGAAGACAGGACCAATGAAAGAAATCAACCTTCTCCAGACAGCACCTCCGT  
GATTGTGTCAGGGCTCATGGTGGCCACCAAGTATGAAGTCAGCGTCTATGCTCTCAAGGACACATTGACA  
AGCAGACCAGCTCAGGGAGTCGTACGACTCTGGAGAATGTCAGCCCTCCAAGAAGGGCCCGTGTGACCG  
ACGCTACAGAACTACCATCACTATTAGCTGGAGAACGAAGACAGAGACGATCACTGGCTTCCAAGTCGA  
TGCCATTTCCAGCCAATGGCCAGACCCCGGTTCCAGAGGACCATCAGCCCGGATGTCAGAAGCTATACTATT  
ACAGGTTTACAGCCAGGCACTGACTACAAGATCCACCTGTACACGCTCAACGACAATGCCCGGAGCTCTC  
CTGTGGTCATTGATGCCTCCACGGCCATTGATGCCCCATCAACCTGCGGTTCTGACCACCACACCCAA  
CTCCTTGTGGTATCATGGCAGGCACCCCGTCCAGGATTAAGTGGCTACATTATCAAGTATGAGAAGCCT  
GGATCCCTCCCAGAGAAGTGGTCCCTCGGCCCGCCCTGGTGTACGGAGGCCACCATCACTGGTCTGG  
AGCCAGGAACCGAGTACACCATCTATGTATCGCACTGAAGAACAATCAGAAGAGTGAGCCCTGATTGG  
GAGGAAAAGACAGATGAGCTTCCCAACTGGTTACCCTTCCACACCCCAATCTTATGGACCAGAGATC  
TTGGATGTTCCCTCCACAGTTCAAAGACCCCTTCGTACCAACCCCTGGGTATGACACCCGAAAATGGTA  
TTCAGTTCCTGGCAGATCCCACCAACAACCCAGTGTGGGCAACAAATGATCTTTGAGGAACATGGCTT  
TAGGCGAACCCAGCCACCCTGCGGCCACCCCGTCCAGGCTTAGGCCAAGACCATACCTGCCGAATGTA  
GATGAGGAGGTCCAAATCGGTATGTTCCAGGGGAGACGTAGACTACCACCTCTATCCTCATGTTCCGG  
GGCTCAATCCAAATGCCTCTACAGGACAAGAAGCTCTCTCAGACAACCATCTTTGGACGCCATTCCA  
GGAGAGTTCTGAGTACATCATTTTATGCCAACCTGTTGGCACTGACGAAGAGCCCTTACAGTTCCAAGTT  
CCTGGAACCTTCTACCAGTGCAGTCTGACTGGCCTTACCAGAGGGGTACCTACAACATCATAGTGGAGG  
CCCTGCACAACCCAGAGGAGGCACAAGGTCCGAGAAGAGGTTGTTACTGTAGGCAACACTGTCAACGAAGG  
CCTGAACCAGCCTACGGATGACTCATGCTTTGACCCTTACACGGTTTCCATTACGCCGTTGGAGAGGAA  
TGGGAGCGGTTATCTGACTCTGGCTTTAAGCTCACTTGCCAGTGTGGGCTTTGGCAGTGGTCATTTC  
GATGCGATTATCTAAATGGTGCCATGACAACGGTGTCAACTACAAGATCGGAGAGAAGTGGGATCGTCA  
GGGAGAAAATGGCCAGCGGATGAGCTGCACATGTCTCGGGAATGGAAAGGGAGAATTCAAATGCGATCCC  
CATGAAGCAACGTGTTATGACGACGGGAAGACCTACCACGTAGGAGAACAGTGGCAGAAAAGAGTATCTCG  
GAGCCATTTGCTCCTGCACGTGTTTCGGGGGCCAGCGGGGCTGGCCTGTGACAACCTGCCGACAGCTGG  
GGCTGCTGAACCCAGTCCCGATGGTACCCTGGCCACACCTACAACCAAGTATACACAGAGATACCATCAG  
AGAACGAACACTAATGTAATTGCCAATTGAATGCTTTCATGCCGTTGGACGTGCAGGCTGACAGAGATG  
ATTCCAGAGAG

ACGCGTACGCGGCCGCTCGAGCAGAACTCATCTCAGAAGAGGATCTGGCAGCAATGATATCCTGGATT  
ACAAGGATGACGACGATAAGGTTAA

**Protein Sequence:**

>RR209525 representing NM\_019143  
 Red=Cloning site Green=Tags(s)

MLRGPGRLLLLLAVLCLGTSVRCTETGKSKRQAQQIVQPPSPVAVSQSKPGCFDNGKHYQINQQWERTY  
 LGNALVCTCYGGSRGFNCEKPEPEETCFDKYTGNTYKVGDTYERPKDSMIWDCTCIGAGRGRISCTIAN  
 RCHEGGQSYKIGDKWRRPHETGGYMLELCLGNGKGEWTKPIAEKCFDHAAGTSYVVGETWEKPYQGW  
 MVDCTCLGEGNGRITCTSRNRCNDQDTRTSYRIGDTWSKKNRGNLLQCVCTGNRGEWKCERHVLQSAS  
 AGSGSFTDVRTAIYQPQTHPQPAPYGHCVTDSGVVYSVGMQWLKSOQDKQMLCTCLGNGVSCQETAVTQT  
 YGNSNGEPCVLPFTYNGRTFYSCCTTEGRQDGHLCWSTTSNYEQDQKYSFCTDHAVLVQTRGNSNGALC  
 HFPFLYNNRNYTDCTSEGRDNMKWCGTTQNYDADQKFGFCMAAHEEICTTNEGVMYRIGDQWQDQHDH  
 GHMMRCTCVGNRGEWACIPYSQLRDQCI VDDITYNVNDFHHRHEEGHMLNCTCFGQGRGRWKCDDIDQ  
 CQDSETRTFYQIGDSWEK FVHGVRYQCYCYGRGIGEWHCQPLQTYPGTTGPVQVIITETSPQNSHPIQW  
 NAPEPSHITKYILRWRPKTSTGRWKEATIPGHLNSYTIKGLTPGVIYEQQLISIQYGHQEVTRDFDFTS  
 ASTPVTNTVTGETAPFSPVATSESVTEITASSFVSWVSASDTSVSGFRVEYELSEEGDEPQYLDLPST  
 ATSVNIPDLLPGRKYIVNYYQISEEGKQSLILSTSQTTAPDAPPDPTVDQVDDTSIVVWRSPQAPITGY  
 RIVYSPSVEGSSTELNLPETANSVTLSDLQPGVQYNITIIYAVEENQESTPVFIQQUETTGVPDRSDVPAPK  
 DLQFVEVTDVKVTIMWTPPNSAVTGYRVDVLPVNLPGHEGQRLPVNRNTFAEVTGLSPGVTYLKFVFAVH  
 QGRESKPLTAQTTKLDAPTNLQFVNETDRTVLVTWTPPRARIAGYRLTVGLTRGGQPKQYVNGPMSKY  
 PLRNLQPGSEYTVLMAVKGNNQSPKATGVFTTLQPLRSIPPYNTEVTETTIVITWTPAPRIGFKLGVPR  
 SQGGEAPREVTSDSGSIVVSGLTPGVEYTYTIQVLRDGGQERDAPIVNRVVTPLSPPTNLHLEANPDGVL  
 TVSWERSTTPDITGYRITTTPTNGQQGTAL EEVHADQSSCTFENLNPGL EYNVSVYTVKDDKESAPISD  
 TVIPEVQLTDL SFVDITDSSIGLRWTPLNSSIIIGYRITVVAAGEGPIFEDFVDSVGYTVTGLEPG  
 IDYDISVITLINGGESAPTTLTQQTAVPPPTDLRFTNIGPDMRVTWAPPPSIELNLLVRYSPVKN EED  
 VAEL SISPSDNVVL TNLPGTEYLVSVSSVYEQHESIPLRGRQKTGLDSPTGFDSSDVTANSFTVHWVA  
 PRAPITGYIIRHHAHESAGRPRQDRVPPSRNSITLNLNPGTEYIVTIIAVNGREESPLIGQQSTVSDV  
 PRDLEVIASPTSLLSWEPVAVSVRYRITYGETGGNSPVQEFVPGSKSTATINNIKPGADYITITLYA  
 VTGRGDPASSKPVSYNYQTEIDKPSQMVTVDQDNSISVRWLPSTSPVTGYRVTTAPKNGLGPTKSQTV  
 SPDQTEMTIEGLQPTVEYVVSVAQNRNGESQPLVQTAVTNIDRPKGLAFDQVVDVSIKIAWESPGQVS  
 RYRVTYSSPEDGIHELFPAPDGEDTAELHGLRPGSEYTVSVALHGGMESQPLIGVQSTAIAPATNLKF  
 TQVSPTTLTAQWTAPSVKLTGYRVRVTPKEKTGPMKEINLSPDSTSVIVSGLMVATKYEVSVYALKDTLT  
 SRPAQGVVTTLENVSPRRARVTDATETTTITISWRKTETITGFQVDAIPANGQTPVQRTISPDVRSYTI  
 TGLQPGTDYKIHLYTLNDNARSSPVVIDASTAIDAPSNLRLTTTPNSLLVSWQAPRARITGYI IKYEK  
 GSPPREVVPRPRGVTEATITGLEPGTEYTIYVIALKNNQKSEPLIGRKKTDEL PQLVTLPHPNLHGPEI  
 LDVPSTVQKTPFVTNPGYDTENGIQLPGTSHQQPSVGQMI FEEHGFRRTPPTAATPVRLRPRYLPNV  
 DEEVQIGHVPRGDVDYHLYPHVPLNPNASTGQEAL SQTITISWTFPFQESSEYIISCQPVGTDEEPLQFQV  
 PGTSTSATLTGLTRGVTYNIIVEALHNQRRHKVREEVVTGNVTNEGLNQPTDDSCFDPTYVSHYAVGEE  
 WERLSDSGFKLTCQCLGFGSGHFRCDSSKWCHDNGVNYKIGEKWDRQGENGQRMSC TCLGNGKGEFKCDP  
 HEATCYDDGKTYHVGEQWQKEYLGAICSTCFGGQRGWRCNCRRPGA AEPSPDGTGHTYNYQYTRQYHQ  
 RTNTNVNCPICEFMPLDVQADRDSRE

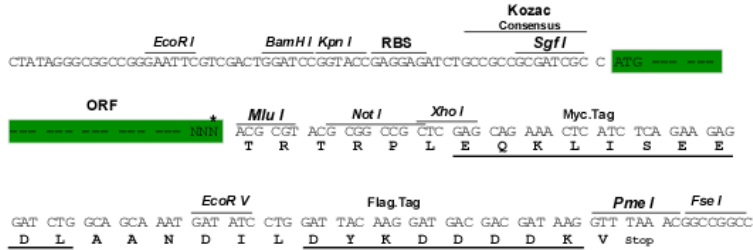
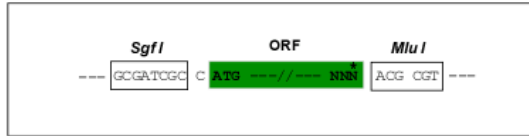
TRTRPLEQKLISEEDLAANDILDYKDDDDKV

**Restriction Sites:**

Sgfl-MluI

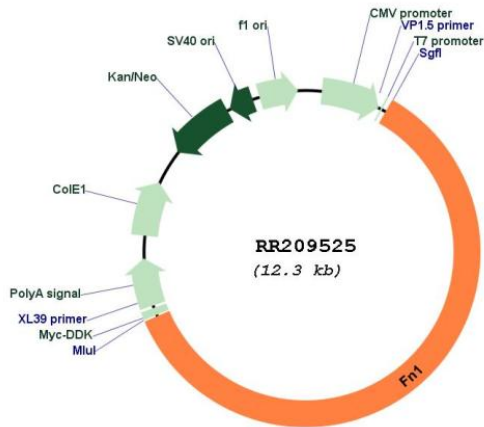
**Cloning Scheme:**

Cloning sites used for ORF Shuttling:



\* The last codon before the Stop codon of the ORF

**Plasmid Map:**



ACCN: NM\_019143

ORF Size: 7431 bp

<b>OTI Disclaimer:</b>	The molecular sequence of this clone aligns with the gene accession number as a point of reference only. However, individual transcript sequences of the same gene can differ through naturally occurring variations (e.g. polymorphisms), each with its own valid existence. This clone is substantially in agreement with the reference, but a complete review of all prevailing variants is recommended prior to use. <a href="#">More info</a>
<b>OTI Annotation:</b>	This clone was engineered to express the complete ORF with an expression tag. Expression varies depending on the nature of the gene.
<b>Components:</b>	The ORF clone is ion-exchange column purified and shipped in a 2D barcoded Matrix tube containing 10ug of transfection-ready, dried plasmid DNA (reconstitute with 100 ul of water).
<b>Reconstitution Method:</b>	<ol style="list-style-type: none"> <li>1. Centrifuge at 5,000xg for 5min.</li> <li>2. Carefully open the tube and add 100ul of sterile water to dissolve the DNA.</li> <li>3. Close the tube and incubate for 10 minutes at room temperature.</li> <li>4. Briefly vortex the tube and then do a quick spin (less than 5000xg) to concentrate the liquid at the bottom.</li> <li>5. Store the suspended plasmid at -20°C. The DNA is stable for at least one year from date of shipping when stored at -20°C.</li> </ol>
<b>RefSeq:</b>	<a href="#">NM_019143.2</a> , <a href="#">NP_062016.2</a>
<b>RefSeq Size:</b>	8331 bp
<b>RefSeq ORF:</b>	7434 bp
<b>Locus ID:</b>	25661
<b>Cytogenetics:</b>	9q33
<b>MW:</b>	272.4 kDa
<b>Gene Summary:</b>	extracellular matrix component; may play a role in fibrosis and tumor metastasis [RGD, Feb 2006]