

Product datasheet for **RR209519**

Cops3 (NM_001004200) Rat Tagged ORF Clone

Product data:

Product Type: Expression Plasmids
Product Name: Cops3 (NM_001004200) Rat Tagged ORF Clone
Tag: Myc-DDK
Symbol: Cops3
Synonyms: MGC94156
Vector: pCMV6-Entry (PS100001)
E. coli Selection: Kanamycin (25 ug/mL)
Cell Selection: Neomycin
ORF Nucleotide Sequence: >RR209519 representing NM_001004200
Red=Cloning site Blue=ORF Green=Tags(s)

TTTTGTAATACGACTCACTATAGGGCGCCGGAATTCGTCGACTGGATCCGGTACCGAGGAGATCTGCC
GCC**CGATCGCC**

ATGGCGTCTGCTCTGGAGCAGTTCGTGAACAGTGTCCGACAGCTCTCAGCTCAAGGGCAGATGACTCAGC
TTTGTGAACATCAACAAGAGTGGAGAACTCCTTGCAGAAGAACTGTCCCACTTGGACACTGTGCTTGG
GGCTTTAGATGTTCAAGAACAACACTATTGGGTGTCCTTGCCGTTCTGTTTGTGAAGTTTTCCATGCCAGT
GTTCTGACTTCGAGACACTGTTCTCACAGGTGCAGCTTTTCATTAGTACTTGTAAACGGCGAGCACATTC
GATACGCAACAGATACGTTTCGCTGGGCTTTGCCATCAGCTAACAAACGCCTCGTGGAGAGAAAAACGCC
CCTTCGAGGAATTGGCATCCTTAAGCAAGCCATAGACAAGATGCAGATGAATACAAACCAGCTGACCTCA
GTACACGCCGATCTCTGCCAGCTCTGTTACTAGCGAAGTGCTTTAAACCTGCCCTGCCATATCTTGATG
TGGATATGATGGATATCTGTAAGAGAAATGGAGCCTATGATGCAAAACACTTTCTGTGCTACTACTATTA
TGGAGGGATGATCTATACGGGGCTGAAGAACTTTGAAAGAGCACTGTATTTTTATGAGCAGGCCATAACT
ACCCAGCCATGGCCGTAGCCATATCATGTTGGAGTCATATAAAAAGTATATTTAGTGTCTTTGATAT
TACTTGGGAAAGTACAACAGCTGCCTAAATACACCTCTCAAATTTGTTGGCAGATTTATTAAGCCCTCAG
CAACGCTTACCAGAGTTAGCACAGTTTATTCACCAACAACCCGTCCGAGCTCCGGAACCTGGTGAAC
AAGCACAGTGAGACCTTCACTCGAGATAACAACATGGGCCTGGTGAAGCAGTGCCTGTCTCTTTATA
AGAAGAACATTCAGAGGCTGACAAAGACCTTTTTAACACTTTTCATTACAAGATATGGCAAGTCGCGTGCA
GTTATCTGGACCTCAGGAGGCAGAAAAGTATGTTCTACACATGATAGAAGATGGAGAAAATTTTGAAGT
ATTAACCAAGAGGATGGTATGGTCAGTTTCCATGATAATCCTGAAAAGTATAACAACCCAGCCATGCTTC
ATAACATTGATCAAGAGATGCTAAAATGCATAGAGCTGGATGAGCGACTGAAGGCCATGGACCAGGAGAT
CACAGTGAACCCCGAGTTTGTCAAAGAGCATGGGCTACAAGAAGATGACTCAGGAAACAAGCCCTCC
AGCTACTCT

ACGCGTACGCGGCCGCTCGAGCAGAAACTCATCTCAGAAGAGGATCTGGCAGCAAATGATATCCTGGATT
ACAAGGATGACGACGATAAGGTTTAA



Protein Sequence: >RR209519 representing NM_001004200
 Red=Cloning site Green=Tags(s)

MASALEQFVNSVRQLSAQGQMTQLCELINKSGELLAKNLSHLDTVLGALDVQEHSLGVLAVL FVKFSMP
 VPDFETLFSQVQLFISTCNGEHIRYATDTFAGLCHQLTALVERKQPLRGIGILKQAIKMQMNTNQLTS
 VHADLCQLCLLAKCFKALPYLDVMDICKENGAYDAKHFLCYYYYGGMIYTGKKNFERALYFYEQAIT
 TPAMAVSHIMLESYKKYILVSLILLGKVVQLPKYTSQIVGRFIKPLSNAYHELAQVYSTNPNSELRLNVN
 KHSETFTRDNNMGLVKQCLSSLYKKNIQRLTKFTLTLSDMASRVQLSGPQEAKEYVLHMIEDGEIFAS
 INQKQGMVSFHDNPEKYNNPAMLHNIDQEMLKCIELDERLKAMDQEITVNPQFVQKSMGSEQEDDSGNKPS
 SYS

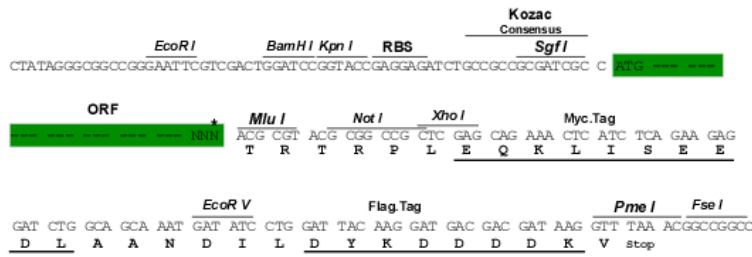
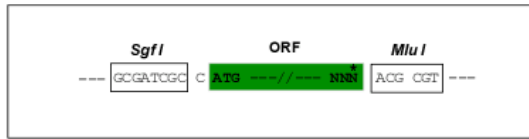
TRTRPLEQKLISEEDLAANDILDYKDDDDKV

Restriction Sites:

SgfI-MluI

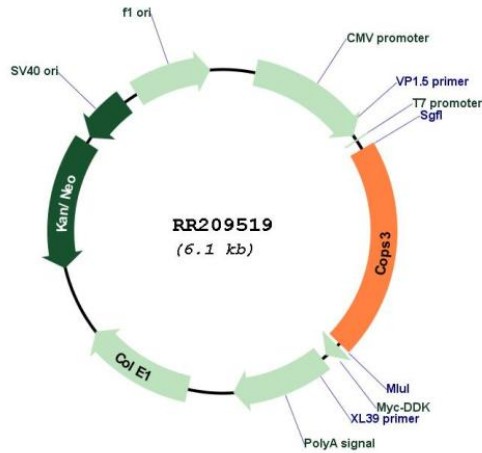
Cloning Scheme:

Cloning sites used for ORF Shuttling:



* The last codon before the Stop codon of the ORF

Plasmid Map:



ACCN:

NM_001004200

ORF Size:	1269 bp
OTI Disclaimer:	The molecular sequence of this clone aligns with the gene accession number as a point of reference only. However, individual transcript sequences of the same gene can differ through naturally occurring variations (e.g. polymorphisms), each with its own valid existence. This clone is substantially in agreement with the reference, but a complete review of all prevailing variants is recommended prior to use. More info
OTI Annotation:	This clone was engineered to express the complete ORF with an expression tag. Expression varies depending on the nature of the gene.
Components:	The ORF clone is ion-exchange column purified and shipped in a 2D barcoded Matrix tube containing 10ug of transfection-ready, dried plasmid DNA (reconstitute with 100 ul of water).
Reconstitution Method:	<ol style="list-style-type: none">1. Centrifuge at 5,000xg for 5min.2. Carefully open the tube and add 100ul of sterile water to dissolve the DNA.3. Close the tube and incubate for 10 minutes at room temperature.4. Briefly vortex the tube and then do a quick spin (less than 5000xg) to concentrate the liquid at the bottom.5. Store the suspended plasmid at -20°C. The DNA is stable for at least one year from date of shipping when stored at -20°C.
RefSeq:	NM_001004200.1 , NP_001004200.1
RefSeq Size:	1596 bp
RefSeq ORF:	1272 bp
Locus ID:	287367
UniProt ID:	Q68FW9
Cytogenetics:	10q22
MW:	47.9 kDa
Gene Summary:	subunit of the COP9 signalosome complex; mouse homolog plays a role in early embryonic development [RGD, Feb 2006]