

Product datasheet for **RR209515**

Phf13 (NM_001107995) Rat Tagged ORF Clone

Product data:

Product Type: Expression Plasmids
Product Name: Phf13 (NM_001107995) Rat Tagged ORF Clone
Tag: Myc-DDK
Symbol: Phf13
Vector: pCMV6-Entry (PS100001)
E. coli Selection: Kanamycin (25 ug/mL)
Cell Selection: Neomycin
ORF Nucleotide Sequence: >RR209515 representing NM_001107995
Red=Cloning site Blue=ORF Green=Tags(s)

TTTTGTAATACGACTCACTATAGGGCGGCCGGAATTCGTCGACTGGATCCGGTACCGAGGAGATCTGCC
GCC**CGATCGCC**

ATGGACTCCGACTCCTGCGCCGCCCTTCCACCCCGAGGAGTACTCCCCACTGTGAAGAGGCCCGGA
CTGTGGAAGACTCAACAAGTTCTGCACCTTCGTGTGGCCTATGCAGGCTACATCCCCTATCCGAAGGA
GGAGTCCCCCTGAGGAGCAGCCCAGTCTGCCAACAGCACTGCAGGGACCATCGACAGTGATGGCTGG
GACTGTTTTCTGACATTACATCTTCAGTGCCCGACCGATGCTTCAGCCACCTGCAGCCTTCCCTCT
TGACAGAGACTAAGCCCAGTGACTTCTGCTGGACAGGAAGAAAACGGACAAGCTGAAGAAGAAGAGGAG
GAGGAAGCGCAGGGACAGCGACGTGCCTGGGAAGGAGGAGTACAGGGGGAGCCTGCTGAAGCTGGAAGCT
GCTGACCCGATGTGGAGGCCCTCAAGTCCCACCATGCAGGATATCCCCAGGCCTCTGCTGACCCCT
GCTCGGGCTGGGACTCTGACACTCCTTCAAGTGGTTCTTGTGCTACTGTGTACCTGATCAGGTCACAGA
AATAAAAAGTGAAGGAAACGGACTATTGTCCGCCAGGAAAGCAGGTGGTGTCCGAGACGAAGACAGC
ACTGGTAATGATGAAGACATCATGGTGGACTCAGATGATGATTCCTGGGATCTTGTACCTGTTTCTGCA
TGAAGCCCTTCGCTGGTCCGCCATGATCGAGTGTAAACGAATGCCACACCTGGATCCACCTGTCTTGTGC
GAAGATCCGCAAGTCCAATGTTCCGGAAGTGTTCGCTGCAAAAAGTGCCGGGACTCCAAGTTTGATATC
CGTCGCTCCAACCGTCCCGAATGGGCTCCCGAAGCTGTTTCTGGAC

ACGCGTACGCGGCCGCTCGAGCAGAACTCATCTCAGAAGAGGATCTGGCAGCAAATGATATCCTGGATT
ACAAGGATGACGACGATAAGGTTTAA



[View online »](#)

Protein Sequence: >RR209515 representing NM_001107995
 Red=Cloning site Green=Tags(s)

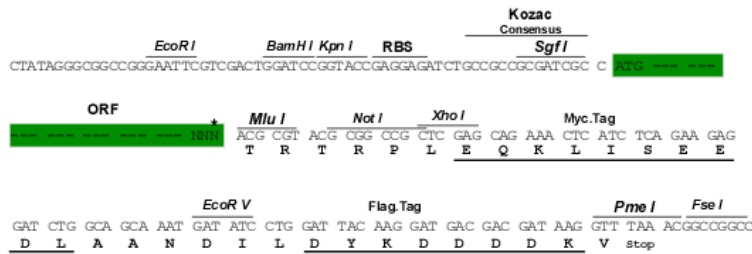
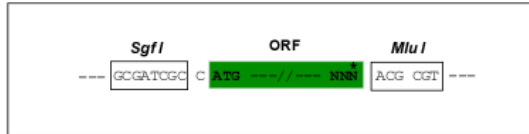
MSDSDCAAAFHPEEYSPTCKRRRTVEDFNKCTFVLAYAGYIPYPKEELPLRSSPSPANSTAGTIDSDGW
 DTGFSDITSSVPDRFCFSLQPSLLQRAKPSDFLLDRKTKDKLKKRRRRRRSDVPGKEEYRGSLLKLEA
 ADPYVEAPSSPTMQDIPQASADPCSGWSDTPSSGSCATVSPDQVTEIKTEGKRTIVRQKQVVFREDS
 TGNDDEDIMVSDDDSDVLVTCFCMKPFAGRPMIECNECHTWIHLSCAKIRKSNVPEVFCQKCRDSKFDI
 RRSNRSRMGSRKLFLLD

TRTRPLEQKLISEEDLAANDILDYKDDDDKV

Restriction Sites:
Cloning Scheme:

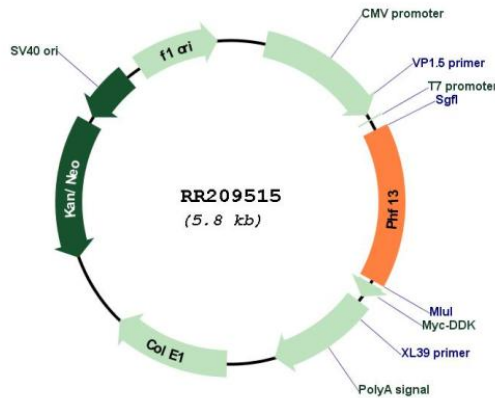
SgfI-MluI

Cloning sites used for ORF Shuttling:



* The last codon before the Stop codon of the ORF

Plasmid Map:



ACCN: NM_001107995

ORF Size:	888 bp
OTI Disclaimer:	The molecular sequence of this clone aligns with the gene accession number as a point of reference only. However, individual transcript sequences of the same gene can differ through naturally occurring variations (e.g. polymorphisms), each with its own valid existence. This clone is substantially in agreement with the reference, but a complete review of all prevailing variants is recommended prior to use. More info
OTI Annotation:	This clone was engineered to express the complete ORF with an expression tag. Expression varies depending on the nature of the gene.
Components:	The ORF clone is ion-exchange column purified and shipped in a 2D barcoded Matrix tube containing 10ug of transfection-ready, dried plasmid DNA (reconstitute with 100 ul of water).
Reconstitution Method:	<ol style="list-style-type: none">1. Centrifuge at 5,000xg for 5min.2. Carefully open the tube and add 100ul of sterile water to dissolve the DNA.3. Close the tube and incubate for 10 minutes at room temperature.4. Briefly vortex the tube and then do a quick spin (less than 5000xg) to concentrate the liquid at the bottom.5. Store the suspended plasmid at -20°C. The DNA is stable for at least one year from date of shipping when stored at -20°C.
RefSeq:	NM_001107995.1 , NP_001101465.1
RefSeq Size:	3180 bp
RefSeq ORF:	891 bp
Locus ID:	313742
Cytogenetics:	5q36
MW:	33.4 kDa