

Product datasheet for **RR209509**

Mcl1 (NM_021846) Rat Tagged ORF Clone

Product data:

Product Type: Expression Plasmids
 Product Name: Mcl1 (NM_021846) Rat Tagged ORF Clone
 Tag: Myc-DDK
 Symbol: Mcl1
 Mammalian Cell Selection: Neomycin
 Vector: pCMV6-Entry (PS100001)
 E. coli Selection: Kanamycin (25 ug/mL)
 ORF Nucleotide Sequence: >RR209509 representing NM_021846
 Red=Cloning site Blue=ORF Green=Tags(s)

TTTTGTAATACGACTCACTATAGGGCGGCCGGAATTCGTCGACTGGATCCGGTACCGAGGAGATCTGCC
 GCC**CGATCGCC**

ATGTTTGGCCTTCGGAGAAACGCGGTAATCGGCTTGAACCTGTACTGCGGCGGCGCTAGCCTCGGCGCG
 GCGGCGGCTCTCCGGCCGGGACGCGCTGGCGGCCGAGGAGGCCAAGGCGCGGCGGAGGGGGAGGGGA
 GGCCGCTCTGCTGCCCGGCGCGGGTGGTCGCCCGGCCCTCCGGTGGGCGCGAGGACCCCGACGTC
 ACCGCTCGGCAGAGAGGCGGCTGCTCAAGTCGCCCGGCCCTCCTCGCCGTGCCGCTGAGGAGATGGCCG
 CGTCGGCCCGCCATCATGTCTCCGAGGAGGAGCTGGACGGCTGCGAGCCGGAGGTGCTCAGCAAACG
 CCGGGCGGTGCTGCCCTACTGGAGCGCTGAGCGAGGCGGCTAAGAGCTCCGGAGCTGACGGCTCGCTG
 CCTCCACGCGCCGCCCTGAGGAGGAAGACGACGAGCTGTACCGCCAGTCGCTGGAGATCATCTCCC
 GCTACCTGCGGGAGCAGGCGACGGGCTCCAAGGACGCGAAGCCTCTGGGCGAGGCCGGCGCAGCGGGCCG
 GAGGGCGCTGGAGACCCTGCGGCGCTGGGCGACGGCTGCAGCGCAACCACGAGACGGCCTTCAGGGC
 ATGCTTCGGAAACTGGACATTAACAACTGGGCGAGGATTGTACTCTATTCTTTTGGTGCCTTTGTGCCAAACA
 CTTAAAGAGCATAAACCAAGAAAGCTGCATCGAACCTTTAGCAGAAAGTATCACAGACGTTCTTGTAAAG
 ACGAAGCGGGACTGGCTTGTAAACAAAGAGGCTGGGATGGGTTTGTGGAGTTCTCCACGTACAGGACC
 TAGAAGCGGCATCAGAAATGTGCTGCTGGCTTTTGGGGTGTGCTGGAGTAGGGGCTGGTCTGGCATA
 TCTAATAAGG

ACGCGTACGCGGCCGCTCGAGCAGAACTCATCTCAGAAGAGGATCTGGCAGCAAATGATATCCTGGATT
 ACAAGGATGACGACGATAAGGTTTAA



[View online »](#)

Protein Sequence: >RR209509 representing NM_021846
 Red=Cloning site Green=Tags(s)

MFGLRRNAVIGLNL YCGGASLGAGGGSPAGTRLAAEEAKARREGGGEALLPGARVVARPPPVGAEDPDV
 TASAERLLKSPGLLAVPPEEMAASAAA IMSPEEELDGCEPEVL SKRPAVLPLLERVSEAAKSSGADGSL
 PSTPPPEEEDDEL YRQSL E I I SRYLREQATGSKDAKPLGEAGAAGRRALET LRRVGDGVQRNHETA FQG
 MLRKLDIKNEDDVKSF SRVMTHVFKDGV TNWGRIV T L I SFGAFVAKHLK S I N Q E S C I E P L A E S I T D V L V R
 TKRDWL VKQRGWDGFVEFFHVQDLEGGIRNVLLAFAGVAGVGAGLAYLIR

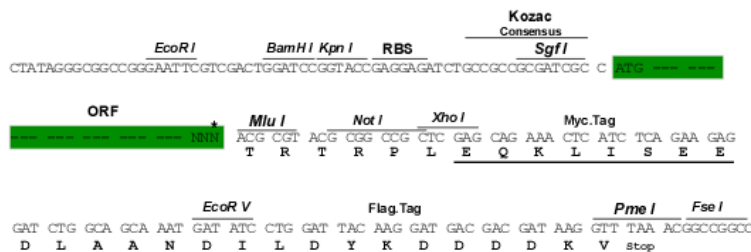
TRTRPLEQKLISEEDLAANDILDYKDDDDKV

Chromatograms: https://cdn.origene.com/chromatograms/ja2135_a05.zip

Restriction Sites: Sgfl-MluI

Cloning Scheme:

Cloning sites used for ORF Shuttling:



* The last codon before the Stop codon of the ORF

ACCN: NM_021846

ORF Size: 990 bp

OTI Disclaimer: The molecular sequence of this clone aligns with the gene accession number as a point of reference only. However, individual transcript sequences of the same gene can differ through naturally occurring variations (e.g. polymorphisms), each with its own valid existence. This clone is substantially in agreement with the reference, but a complete review of all prevailing variants is recommended prior to use. [More info](#)

OTI Annotation: This clone was engineered to express the complete ORF with an expression tag. Expression varies depending on the nature of the gene.

Components: The ORF clone is ion-exchange column purified and shipped in a 2D barcoded Matrix tube containing 10ug of transfection-ready, dried plasmid DNA (reconstitute with 100 ul of water).

Reconstitution Method:

1. Centrifuge at 5,000xg for 5min.
2. Carefully open the tube and add 100ul of sterile water to dissolve the DNA.
3. Close the tube and incubate for 10 minutes at room temperature.
4. Briefly vortex the tube and then do a quick spin (less than 5000xg) to concentrate the liquid at the bottom.
5. Store the suspended plasmid at -20°C. The DNA is stable for at least one year from date of shipping when stored at -20°C.

RefSeq: [NM_021846.2](#), [NP_068618.2](#)

RefSeq Size: 2130 bp

RefSeq ORF: 993 bp

Locus ID: 60430

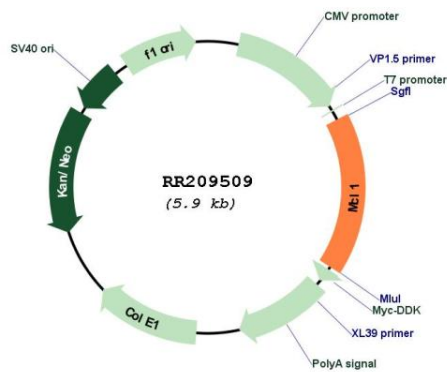
UniProt ID: [Q9Z1P3](#)

Cytogenetics: 2q34

MW: 35.2 kDa

Gene Summary: ovarian BAD-interacting protein; may inhibit apoptosis [RGD, Feb 2006]

Product images:



Circular map for RR209509