

## Product datasheet for **RR209503**

### Anxa10 (NM\_001109110) Rat Tagged ORF Clone

#### Product data:

Product Type:	Expression Plasmids
Product Name:	Anxa10 (NM_001109110) Rat Tagged ORF Clone
Tag:	Myc-DDK
Symbol:	Anxa10
Synonyms:	RGD1560956
Vector:	pCMV6-Entry (PS100001)
E. coli Selection:	Kanamycin (25 ug/mL)
Cell Selection:	Neomycin
ORF Nucleotide Sequence:	>RR209503 representing NM_001109110 Red=Cloning site Blue=ORF Green=Tags(s)

TTTGTGAATACGACTCACTATAGGGCGGCCGGAATTCGTCGACTGGATCCGGTACCGAGGAGATCTGCC  
GCC**CGCATCGC**

ATGTTCTGTGGGAATATGTCCAAGGAACCATCTCCAGCTCCAAATTTCAATCCCATGATGGATGCC  
AAGTGATAGATGGAGCACTCCAAGGATTTGAATGCAATAAAGACCTGTTGATCGACATCCTAACACAACG  
CAGCAATGCTCAGCGGCAGATGATAGCTGGGACCTATCAGAGCATGTACGGCAGGGACCTGATTGCAGAT  
CTGAAGGAGCAACTTTTCATCTCACTTCAAAGAAGTGATGGTGGGCCTGATGTATCCACCACCATCTTACG  
ATGCTCATGAGCTGTGGCATGCCATGAAGGGAGCAGGAAGTATGAGAATTGCCTCATTGAAATATTAGC  
TTCGAGAACAATGGGGAGATTTTCCAGATGCGAGAAGCCTACTGTTTACAATACAGCAATAACCTTCAA  
GAGGACATTTATTCAGAGACATCGGGACACTTCCGAGATACTCTTATGAACTTGGTCCAGGGAAACAGGG  
AGGAAGGCTACACTGACCCTGCAATGGCTGCTCAGGATGCAATGGTGTGTGGGAAGCCTGCCAGCAGAA  
GACTGGGGAACATAAAACCATGCTGCAGATGATCCTGTGCAACAAGAGCTACCCACAACCTTTGGCTGATT  
TTCCAGGAATTTCAAATATTTCTGGCCAAGACCTGGTGGATACTATCAGTGACTGTTACGATGGTTACT  
TCCAGGAGCTACTGATTGCAATTGTTCTGTGTTTCAGGACAAACCAAGTACTTTGCTTATAAATTATA  
CAGGGCAATCCATGATTTTGGCTTCCATAACAAACTGTCTCAGGATTCTAATCGCCAGAAGTGAATA  
GATCTAATGACCATAAGGAAACGTTACAAGGAGAGATTCGAAAAATCCCTCTTTCATGATATCAAAAGTT  
TTGCTTCAGGGCACTATAAGAAAGCATTGCTTGCCATCTGCGCCGGTGATGTGGAAGACTAT

**ACGCGT**ACGCGGCCGCTCGAGCAGAACTCATCTCAGAAGAGGATCTGGCAGCAATGATATCCTGGATT  
ACAAGGATGACGACGATAAGGTTTAA



[View online »](#)

**Protein Sequence:**

```
>RR209503 representing NM_001109110
```

Red=Cloning site    Green=Tags(s)

MFCGEYVQGTIFPAPNFPNMDAQVIDGALQGFECKDLLIDILTQRSNAQRQMIAGTYQSMYGRDLIAD  
LKEQLSSHFKVMVGLMYPPPSYDAHELWHAMKGAGTDENCLIEITLASRTNGEIFQMREAYCLQYSNNLQ  
EDIYSETSGHFDRDTLMNLVQGNREEGYTPAMAAQDAMVLWEACQKKTGEHKTMLQMILCNKSYPQLWL I  
FQEFQITISGDLVDTISDCYDGYFQELLIAIVRCQDKPVSFAYKLRYAIHDFGFHNKTVIRIL IARSEI  
DLMTIRKRYQKRFKSLFDHDKISFASGHYKKALLAICAGPVEDY

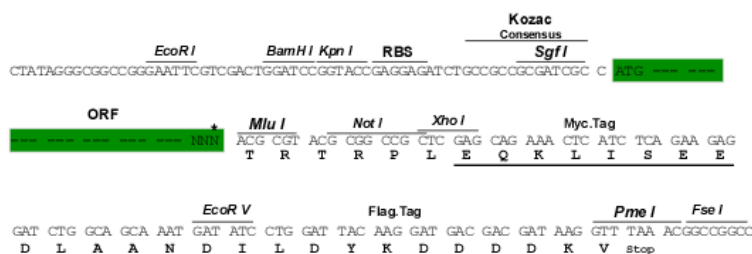
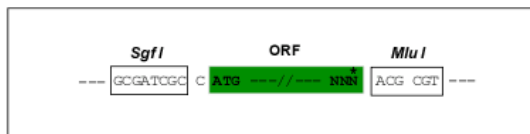
TRTRPLEQKLISEEDLAANDILDYKDDDDKV

**Restriction Sites:**

Sgfl-MluI

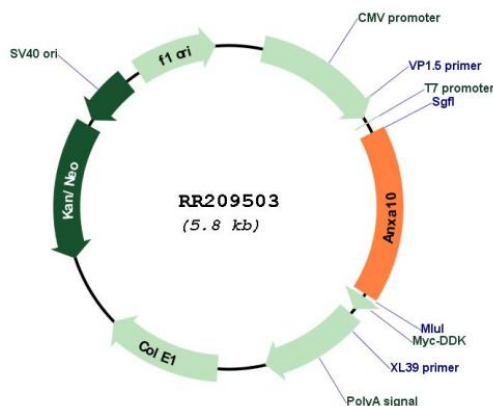
### Cloning Scheme:

Cloning sites used for ORF Shuttling:



\* The last codon before the Stop codon of the ORF

### Plasmid Map:



**ACCN:**

NM\_001109110

ORF Size:

972 bp

<b>OTI Disclaimer:</b>	The molecular sequence of this clone aligns with the gene accession number as a point of reference only. However, individual transcript sequences of the same gene can differ through naturally occurring variations (e.g. polymorphisms), each with its own valid existence. This clone is substantially in agreement with the reference, but a complete review of all prevailing variants is recommended prior to use. <a href="#">More info</a>
<b>OTI Annotation:</b>	This clone was engineered to express the complete ORF with an expression tag. Expression varies depending on the nature of the gene.
<b>Components:</b>	The ORF clone is ion-exchange column purified and shipped in a 2D barcoded Matrix tube containing 10ug of transfection-ready, dried plasmid DNA (reconstitute with 100 ul of water).
<b>Reconstitution Method:</b>	<ol style="list-style-type: none"> <li>1. Centrifuge at 5,000xg for 5min.</li> <li>2. Carefully open the tube and add 100ul of sterile water to dissolve the DNA.</li> <li>3. Close the tube and incubate for 10 minutes at room temperature.</li> <li>4. Briefly vortex the tube and then do a quick spin (less than 5000xg) to concentrate the liquid at the bottom.</li> <li>5. Store the suspended plasmid at -20°C. The DNA is stable for at least one year from date of shipping when stored at -20°C.</li> </ol>
<b>RefSeq:</b>	<u>NM_001109110.1, NP_001102580.1</u>
<b>RefSeq Size:</b>	1342 bp
<b>RefSeq ORF:</b>	975 bp
<b>Locus ID:</b>	498622
<b>Cytogenetics:</b>	16p12
<b>MW:</b>	37.2 kDa