

Product datasheet for **RR209481**

Pank3 (NM_001108272) Rat Tagged ORF Clone

Product data:

Product Type: Expression Plasmids
Product Name: Pank3 (NM_001108272) Rat Tagged ORF Clone
Tag: Myc-DDK
Symbol: Pank3
Vector: pCMV6-Entry (PS100001)
E. coli Selection: Kanamycin (25 ug/mL)
Cell Selection: Neomycin
ORF Nucleotide Sequence: >RR209481 representing NM_001108272
Red=Cloning site Blue=ORF Green=Tags(s)

TTTTGTAATACGACTCACTATAGGGCGGCCGGGAATTCGTCGACTGGATCCGGTACCGAGGAGATCTGCC
 GCCCGATCGCC

ATGAAGATCAAGGATGCCAAAAACCCCTCTTCCCATGGTTTGGCATGGACATTGGAGGAACGCTAGTAA
 AGCTCTCATATTTGAACCTATTGATATCACAGCAGAGGAACAAGAGGAAGTTGAGAGCTTAAAAAG
 TATTCGGAAATATTTGACTTCTAATGTAGCATATGGATCTACTGGCATTCCGGGATGTACATCTTGAAC
 AAGGATTTAACACTTTTTGGACGAAGAGGAACTTGCACCTTATCAGATTTCCAACCCAGGACCTGCCTA
 CTTTTATCCAATGGGGAGAGATAAAAAATTTCTCAACCTTACAAACGGTCTGAGTGCTACAGGAGGTGG
 TGCTTACAAGTTTGAGAAAGATTTTCGCACAATTGAAACCTCCACCTGCACAACTGGATGAACCTGAC
 TGCCTTGTAAAGGGCTTGCTGTACATAGATTCTGTCTGAGTTTCAATGGCAAGCAGAATGCTATTATTTG
 CTAATGCCTCAGAACCTGAGCGATGCCAAAAGATGCCTTTAACCTGGATGATCCTTATCCACTGCTGGT
 GGTGAATATTGGCTCAGGAGTCAGTATTTAGCAGTCCATTCCAAGACAATAAAAAGAGTGACTGGG
 ACAAGCCTTGAGGGGGCACCTTTCTTGGTTTATGCAGTTTATTGACTGGCTGTGAGAGCTTTGAGAGG
 CTCTGGAGATGGCATCCAAGGTGACAGCACCCAAGCTGATAGACTGGTCCGAGATATTTACGGAGGAGA
 CTATGAGAGATTTGGTCTGCCAGGTTGGGCTGTGGCATCTAGTTTGGTAAATATGATTTATAAGGAAAA
 CGAGAAGCTGTTAGTAAAGAGGATCTGGCAAGAGCTACTTTAGTGACTATCACCATAAATTGGATCCG
 TGGCTCGAATGTGTGCTGTTAATGAGAAAATAAATCGAGTTGTCTTCGTTGGAACTTTTTACGTGTCAA
 TACTCTCTATGAACTTCTGGCATACTGCTTTGGATTACTGGTCAAAGGGTCAATTGAAAGCATTGTTT
 CTAGAACATGAGGGATACTTTGGAGCTGTCGGTGCACCTTCTGGACTGCCAAATTTTCAGC

ACGCGTACGCGGCCGCTCGAGCAGAACTCATCTCAGAAGAGGATCTGGCAGCAATGATATCCTGGATT
 ACAAGGATGACGACGATAAGGTTTAA



[View online »](#)

Protein Sequence: >RR209481 representing NM_001108272
 Red=Cloning site Green=Tags(s)

MKIKDAKKPSFPWFGMDIGGTLVKLSYFEPIDITAEQQEEVESLKSIRKYLTSNVAYGSTGIRDVHLEL
 KDLTLFGRGNLHFIRFPTQDLPTFIQMRDKNFSTLQTVLSATGGGAYKFEKDFRTIGNLHLHKLDEL
 CLVKGLLYIDSVSFNGQAECCYFANASEPERCQKMPFNLDPPYLLVNIIGSGVSI LAVHSKDNYKRVTG
 TSLGGGTFGLCSLLTGCESEFEALMASKGDSTQADRLVRDIYGGDYERFGLPGWAVASSFGNMIYKEK
 REAVSKEDLARATLVITINNIGSVARMCAVNEKINRVVFVGNFLRVNTLSMKLLAYALDYWSKGQLKALF
 LEHEGYFGAVGALLGLPNFS

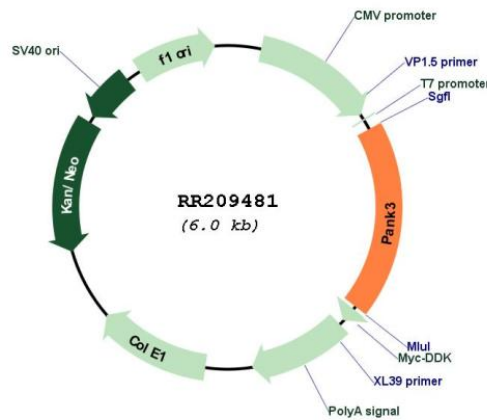
TRTRPLEQKLISEEDLAANDILDYKDDDDKV

Restriction Sites: SgfI-MluI

Cloning Scheme:



Plasmid Map:



ACCN: NM_001108272

ORF Size:	1110 bp
OTI Disclaimer:	The molecular sequence of this clone aligns with the gene accession number as a point of reference only. However, individual transcript sequences of the same gene can differ through naturally occurring variations (e.g. polymorphisms), each with its own valid existence. This clone is substantially in agreement with the reference, but a complete review of all prevailing variants is recommended prior to use. More info
OTI Annotation:	This clone was engineered to express the complete ORF with an expression tag. Expression varies depending on the nature of the gene.
Components:	The ORF clone is ion-exchange column purified and shipped in a 2D barcoded Matrix tube containing 10ug of transfection-ready, dried plasmid DNA (reconstitute with 100 ul of water).
Reconstitution Method:	<ol style="list-style-type: none">1. Centrifuge at 5,000xg for 5min.2. Carefully open the tube and add 100ul of sterile water to dissolve the DNA.3. Close the tube and incubate for 10 minutes at room temperature.4. Briefly vortex the tube and then do a quick spin (less than 5000xg) to concentrate the liquid at the bottom.5. Store the suspended plasmid at -20°C. The DNA is stable for at least one year from date of shipping when stored at -20°C.
RefSeq:	NM_001108272.2 , NP_001101742.1
RefSeq Size:	7044 bp
RefSeq ORF:	1113 bp
Locus ID:	360511
Cytogenetics:	10q12
MW:	41.1 kDa