

Product datasheet for **RR209444**

Ift57 (NM_001107093) Rat Tagged ORF Clone

Product data:

Product Type:	Expression Plasmids
Product Name:	Ift57 (NM_001107093) Rat Tagged ORF Clone
Tag:	Myc-DDK
Symbol:	Ift57
Synonyms:	Esrrbl1
Mammalian Cell Selection:	Neomycin
Vector:	pCMV6-Entry (PS100001)
E. coli Selection:	Kanamycin (25 ug/mL)



[View online »](#)

ORF Nucleotide Sequence:

>RR209444 representing NM_001107093
 Red=Cloning site Blue=ORF Green=Tags(s)

TTTTGTAATACGACTCACTATAGGGCGGCCGGGAATTCGTCGACTGGATCCGGTACCGAGGAGATCTGCC
 GCC**CGGATCGCC**

ATGGCTGCCGCGGCCGCGGTGATCCCGCGCTCGGGCTTGGACGATGGGGTGTCTCGGGCTCGCGGGGAAG
 GCGCTGGGAGGCGGTGGTGGAGCGCGGCCGGAGCGGCTACCACATGTTTCGTGGTATGGAAGACTT
 AGTGGAGAAGCTGAAGCTGCTCCGCTACGAGGAGGAGCTACTCCGAAAGCAATCTGAAGCCCGCTCC
 AGACACTACTTTGCTCTGCCTACCAATCCCGGTGAGCAGTTTACATGTTTTGCACTCTTCTGCCTGGC
 TGATCAACAAGACTGGCCGTGCCCTTGGAGCAGCTCAGGAATATGACGATCCCAATGCAACTATATCTAA
 CATCCTGTCTGAGCTCCGCTCTTTGGGAGAAGTGCAGATTTTCTCTCAAATTAAGTCTGGTTAT
 GGAGAACATGTATGCTATGTTCTTGATTGTTAGCTGAAGAAGCATTAAAATATATTGGTTTCACTTGA
 AAAGGCCATCATACCCAGTGAAGAGTTAGAAGAAGAACTGTTCCGGAAGATGATCGGGAGTTAACATT
 AAGTAAAGTGGATGAAGAGTTTGTGAAGAGGAGACAGATAATGAAGAAAACCTTTATTGATCTAACGTT
 TTAAGGCCAGACCTATCGCTTGGACACAACGAGTCTGCCAAACAAGAAGATATTTGGAAATCTACGA
 CAGATGCTGCGGAATGGAGTCTAGAAGTGAACGTGTAACCCAGCTGAAAGTACAGTACAGGACTGA
 CAACAAGGATTGGAGAATCCACGTTGACCAATGCACCAGCACAAAAGTGAATGAAATCTGCTCTAAAG
 GAGACCAAGGGTCTTGGACAAGCTCCATAATGAAATAGCAGGACTCTGGAAAAGATCGGCAGCCGGG
 AAAAGTACATTAACAATCAACTGAGCACTTGGTTCAAGAATATCGTGGGGCCAGGCCAGCTAAGTGA
 GGCAAGGGAACGCTACCAGCAGGCAATGGCGGAGTAAGTGAACGGACCAGACTCCTGTCTGAGGTGACA
 GAAGAATTAGAAAAGTAAAACAAGAAATGGAAGAGAAGGGCAGCAGCATGACGGATGCCACTCCTTTGG
 TGAAGATTAAGCAGAGCTTAACCAAGCTGAAGCAAGAACTGTTTCAGATGGACATTAGAATCGGGTGT
 GGAGCACACGCTGCTTCAGTCAAAGCTCAAGGAGAAGTGAACATGACCAGAGACATGCATCGGGCTGTC
 ACCCCAGAGTCAGCAATCGGCTTCTAT

ACGCGTACGCGGCCGCTCGAGCAGAACTCATCTCAGAAGAGGATCTGGCAGCAAATGATATCCTGGATT
 ACAAGGATGACGACGATAAGGTTTAA

Protein Sequence:

>RR209444 representing NM_001107093
 Red=Cloning site Green=Tags(s)

MAAAAVIPPSGLDDGVSRRAGEGAGEAVVERGPGAAYHMFVVMEDLVEKLKLLRYEELLRKSNLKPPS
 RHYFALPTNPGEQFYMFTLAAWLINKTGRAFEQPQEYDDPNATISNILSELRSFGRTADFPKSLKSGY
 GEHVCYVLDCLAEELKYGFTWKRPSYPVEELEEEETVPEDDAELTLKVDVEEFVEEETDNEENFIDLNV
 LKAQTYRLDTNESAKQEDILESTTDAAEWSLEVERVLPQLKVTIRTDNKDWRIHVDQMHHKSGIESALK
 ETKGFLDKLHNEISRTLEKIGSREKYINNQLLEHLVQEYRGAQAQLSEARERYQQNGGVTERTRLLSEVT
 EELEKVKQEMEEKGSSMTDGTPLVKIKQSLTKLKQETVQMDIRIGVVEHTLLQSKLKEKCNMTRDMHAAV
 TPESAIGFY

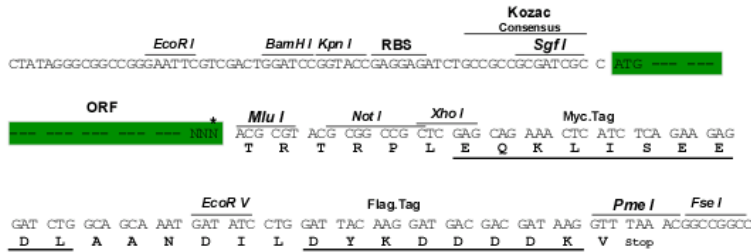
TRTRPLEQKLISEEDLAANDILDYKDDDDKV

Restriction Sites:

SgfI-MluI

Cloning Scheme:

Cloning sites used for ORF Shutting:



* The last codon before the Stop codon of the ORF

ACCN: NM_001107093

ORF Size: 1287 bp

OTI Disclaimer: The molecular sequence of this clone aligns with the gene accession number as a point of reference only. However, individual transcript sequences of the same gene can differ through naturally occurring variations (e.g. polymorphisms), each with its own valid existence. This clone is substantially in agreement with the reference, but a complete review of all prevailing variants is recommended prior to use. [More info](#)

OTI Annotation: This clone was engineered to express the complete ORF with an expression tag. Expression varies depending on the nature of the gene.

Components: The ORF clone is ion-exchange column purified and shipped in a 2D barcoded Matrix tube containing 10ug of transfection-ready, dried plasmid DNA (reconstitute with 100 ul of water).

Reconstitution Method:

1. Centrifuge at 5,000xg for 5min.
2. Carefully open the tube and add 100ul of sterile water to dissolve the DNA.
3. Close the tube and incubate for 10 minutes at room temperature.
4. Briefly vortex the tube and then do a quick spin (less than 5000xg) to concentrate the liquid at the bottom.
5. Store the suspended plasmid at -20°C. The DNA is stable for at least one year from date of shipping when stored at -20°C.

RefSeq: [NM_001107093.1](#), [NP_001100563.1](#)
RefSeq Size: 2548 bp

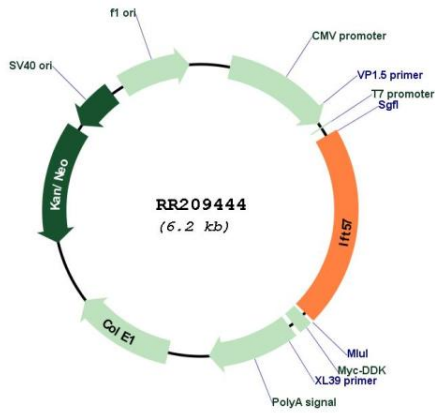
RefSeq ORF: 1290 bp

Locus ID: 303968

Cytogenetics: 11q21

MW: 48.8 kDa

Product images:



Circular map for RR209444